

A dynamic charge-charge interaction modulates PP2A:B56 substrate recruitment

Xinru Wang^{1†}, Dimitriya H Garvanska^{2†}, Isha Nasa³, Yumi Ueki², Gang Zhang², Arminja N Kettenbach^{3,4}, Wolfgang Peti¹, Jakob Nilsson^{2*}, Rebecca Page^{1*}

¹Department of Chemistry and Biochemistry, University of Arizona, Tucson, United States; ²The Novo Nordisk Foundation Center for Protein Research, Faculty of Health and Medical Sciences, University of Copenhagen, Copenhagen, Denmark; ³Department of Biochemistry and Cell Biology, Geisel School of Medicine at Dartmouth, Hanover, United States; ⁴Norris Cotton Cancer Center, Geisel School of Medicine at Dartmouth, Medical Center Drive, Lebanon, United States

Abstract The recruitment of substrates by the ser/thr protein phosphatase 2A (PP2A) is poorly understood, limiting our understanding of PP2A-regulated signaling. Recently, the first PP2A:B56 consensus binding motif, LxxIxE, was identified. However, most validated LxxIxE motifs bind PP2A:B56 with micromolar affinities, suggesting that additional motifs exist to enhance PP2A:B56 binding. Here, we report the requirement of a positively charged motif in a subset of PP2A:B56 interactors, including KIF4A, to facilitate B56 binding via dynamic, electrostatic interactions. Using molecular and cellular experiments, we show that a conserved, negatively charged groove on B56 mediates dynamic binding. We also discovered that this positively charged motif, in addition to facilitating KIF4A dephosphorylation, is essential for condensin I binding, a function distinct and exclusive from PP2A-B56 binding. Together, these results reveal how dynamic, charge-charge interactions fine-tune the interactions mediated by specific motifs, providing a new framework for understanding how PP2A regulation drives cellular signaling.

***For correspondence:**
jakob.nilsson@cpr.ku.dk (JN);
rebeccapage@email.arizona.edu (RP)

[†]These authors contributed equally to this work

Competing interests: The authors declare that no competing interests exist.

Funding: See page 15

Received: 12 February 2020

Accepted: 14 March 2020

Published: 20 March 2020

Reviewing editor: Tony Hunter, Salk Institute for Biological Studies, United States

© Copyright Wang et al. This article is distributed under the terms of the [Creative Commons Attribution License](https://creativecommons.org/licenses/by/4.0/), which permits unrestricted use and redistribution provided that the original author and source are credited.

Introduction

Protein serine/threonine phosphatase 2A (PP2A) is one of the defining members of the ser/thr phosphoprotein phosphatase (PPP) family that, together with protein phosphatase 1 (PP1), regulates over 90% of all ser/thr dephosphorylation events in eukaryotic cells (*Eichhorn et al., 2009*). PP2A is also recognized as a tumor suppressor because its inactivation by small molecules, viral proteins or endogenous inhibitors leads to tumor formation (*Bialojan and Takai, 1988; Pallas et al., 1990; Ruvolo, 2016; Williams et al., 2019*). Cellular and biochemical studies further confirmed this by demonstrating the role of PP2A in orchestrating mitotic events, cell apoptosis, metabolism and many other fundamental cellular signaling pathways (*Nilsson, 2019; Reid et al., 2013; Reynhout and Janssens, 2019; Wlodarchak and Xing, 2016*). In spite of our advances in understanding PP2A signaling, there is a comparative lack of information about how substrates are specifically recruited to PP2A.

The PP2A holoenzyme is a heterotrimer, composed of a scaffolding subunit A (PPP2R1), a regulatory subunit B (PPP2R2-PPP2R5) and a catalytic subunit C (PPP2C) (*Cho and Xu, 2007; Xu et al., 2008; Xu et al., 2006*). The A and C subunits form the PP2A core enzyme. Although this core enzyme is relatively invariant, the variable and interchangeable regulatory B subunits result in a diversity of distinct PP2A holoenzymes. There are four known families of B subunits, B55 (B'), B56 (B'', PR61), PR72 (B'''), and PR93 (B''''), that differ in both their primary sequences and tertiary

structures. Moreover, within each B subunit family, the existence of multiple isoforms and splicing variants further increases the overall number of potential PP2A holoenzymes (Eichhorn *et al.*, 2009). Thus, it is the highly variable B subunits that determine PP2A holoenzyme substrate specificity. However, how the B subunits mediate substrate binding at a molecular level is only now beginning to become clear.

Recent structural and biochemical studies showed that PP2A, like other PPPs (i.e., PP1, PP2B/Calcineurin (CN)) bind conserved short linear motifs (SLiMs) found within the intrinsically disordered region (IDR) of its substrates and regulators (Tompa *et al.*, 2014; Van Roey and Davey, 2015; Wang *et al.*, 2016). These SLiMs are disordered in their free form but typically become ordered upon binding structured domains (Dyson and Wright, 2002). Crystal structures of ordered SLiMs in complex with PPPs show that these recognition events are, in most cases, driven by the interaction of hydrophobic SLiM residues that bind deep hydrophobic pockets on the PPPs (Peti *et al.*, 2013). Single SLiMs typically bind to their cognate PPPs with moderate affinities (Li *et al.*, 2007). However, the existence of multiple SLiMs within a single regulator/substrate, coupled with post-translational modifications like phosphorylation, can greatly alter their affinity for their respective PPP (Bajaj *et al.*, 2018; Grigoriu *et al.*, 2013; Kumar *et al.*, 2016; Nasa *et al.*, 2018).

More recently, it has been discovered that IDPs can also form high affinity complexes that are dynamic; that is, in which the IDPs simultaneously retain their intrinsic structural disorder (Borgia *et al.*, 2018). In these cases, binding is typically driven by electrostatics (Borgia *et al.*, 2018; Hendus-Altenburger *et al.*, 2019; Luo *et al.*, 2016). That is, multiple residues of opposite charge facilitate binding while the lack of a requirement for deep pockets allows the IDPs to retain their inherent dynamics. This emerging paradigm for biomolecular interactions may explain, in part, why hundreds of IDPs have long stretches of positive (lys, arg) and and/or negative (asp, glu) residues (Borgia *et al.*, 2018). Namely, that they dynamically contribute to intermolecular interactions.

Recently, the first PP2A:B56 specific SLiM, the LxxlxE motif, was identified (Hertz *et al.*, 2016; Wang *et al.*, 2016; Wu *et al.*, 2017). Proteins containing validated LxxlxE motifs bind B56, an all α -helical heat repeat protein, in a deep, highly conserved hydrophobic pocket. Most LxxlxE motifs bind PP2A:B56 with moderate affinities (low micromolar K_D), similar to those observed for other PPP-specific SLiMs. However, for PP1 and CN, enhanced affinities are achieved by exploiting avidity; namely, regulators and substrates contain two or more distinct SLiMs which, together, result in tight affinities for their cognate PPP (Choy *et al.*, 2014; Grigoriu *et al.*, 2013). Thus far, no such enhancement has been identified for PP2A:B56 as only the LxxlxE motif has been identified. Whether PP2A:B56 uses a similar mechanism to enhance and or modulate the affinities of LxxlxE containing regulators/substrates is thus a major outstanding question.

Results

A subset of PP2A:B56 specific substrates depend on a conserved acidic patch in B56 for PP2A:B56 binding

An analysis of the amino acid conservation among 150 distinct B56 sequences shows that the residues that comprise the concave surface of B56 are exceptionally conserved (Figure 1A). This conserved region includes the deep, hydrophobic binding pocket that specifically binds the LxxlxE SLiM (Figure 1A; Hertz *et al.*, 2016; Wang *et al.*, 2016). However, the conserved region is much larger, suggesting that regions adjacent to the LxxlxE pocket might also contribute to regulator/substrate binding. An examination of the electrostatic potential of the same region led to the identification of a surface adjacent to the LxxlxE pocket that is not hydrophobic, but instead is highly negatively charged (Figure 1B). This surface is defined by multiple acidic residues that are perfectly conserved in B56, both among its various isoforms and throughout evolution (Figure 1A, Figure 1—figure supplement 1).

To identify if PP2A:B56 substrates/regulators are affected by mutating the conserved B56 acidic patch, we mutated two acidic amino acids in this negatively charged area to arginines (B56 α_{2R} : E335R/D338R, B56 γ_{2R} : E310R/D313R; Figure 1C) and identified proteins associated with YFP-B56 α/γ or YFP-B56 α/γ_{2R} from mitotic HeLa cells using quantitative label free mass spectrometry (MS). The MS analysis shows that a subset of the LxxlxE-containing B56 interactors are regulated specifically by the acidic patch for B56 binding in both isoforms. This includes the mitotic regulators KIF4A,

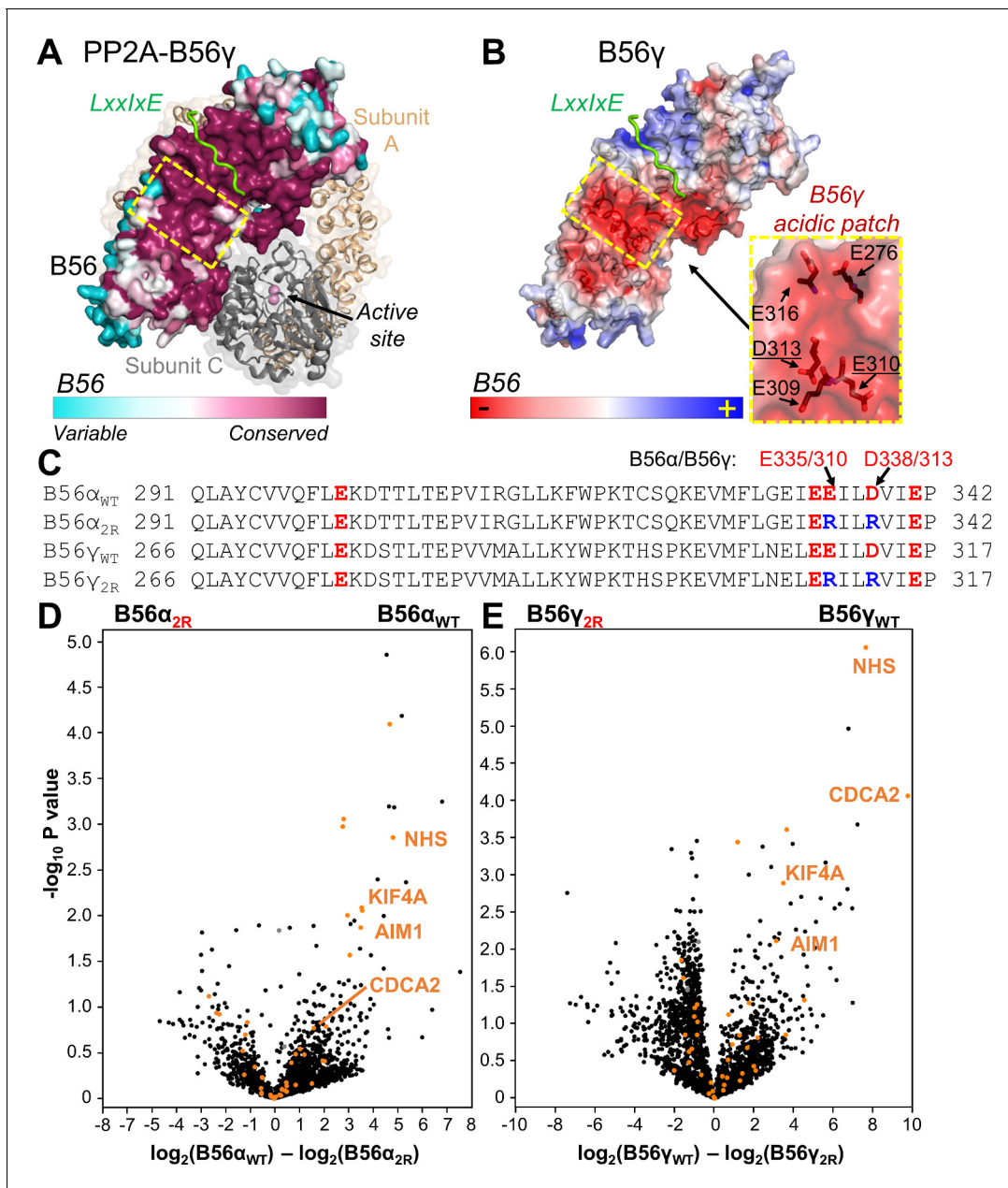


Figure 1. The PP2A:B56 holoenzyme uses a conserved acidic patch to bind to B56-specific interactors. (A) PP2A:B56 γ holoenzyme (PDBID 2NPP): scaffolding subunit A (beige) and catalytic subunit C (grey; bound metals shown as pink spheres) illustrated as cartoons with transparent surfaces. The regulatory B subunit, B56, is shown as a surface and colored by sequence conservation. An LxxIxE peptide (RepoMan: ⁵⁸⁸PLLpSPIPELPE⁵⁹⁸, *p* indicates residue is phosphorylated) bound to B56 γ is shown in green (PDBIDs 5SW9 and 2NPP superimposed using B56). The location of the conserved acidic patch in B56 (see B) is highlighted with a dashed, yellow square. (B) The B56 γ :LxxIxE complex (PDBID 5SW9) colored according to electrostatic potential; LxxIxE peptide is in green. The B56 residues that comprise the conserved acidic patch (yellow dashed square) are shown as sticks and labeled (right); residues mutated in the '2R' mutants underlined. (C) Sequences of B56 α and B56 γ that comprise the acidic patch, with the acidic residues colored red. The B56 '2R' variants indicate the acidic residues mutated to arginine 'R'. (D) Volcano plot representing the mass spectrometry-identified proteins co-purifying with YFP-B56 α versus YFP-B56 α_{2R} (E335R/D338R) from mitotic HeLa cells expressing YFP-B56 α or YFP-B56 α_{2R} . PPP2R1A (PP2A regulatory subunit A, α isoform), PPP2CA (PP2A catalytic subunit, α isoform) are labeled in grey. Predicted and confirmed LxxIxE containing proteins (Hertz et al., 2016; Wang et al., 2016) are highlighted in orange. Four of the six most significantly affected LxxIxE containing B56 interactors selected for further study [NHS, AIM1, CDCA2 (RepoMan) and KIF4A] are labeled. (E) Same as (D) except for YFP-B56 γ versus YFP-B56 γ_{2R} (E310R/D313R).

The online version of this article includes the following source data and figure supplement(s) for figure 1:

Source data 1. List of B56 acidic patch dependent interactors.

Figure 1 continued on next page

Figure 1 continued

Figure supplement 1. Sequence alignment of the B56 acidic patch.**Figure supplement 2.** The impact of altering the B56 acidic patch in mitotic progression.

RepoMan (CDCA2), Nance-Horan syndrome protein (NHS) and absent in melanoma 1 protein (AIM1), (ratio WT/2R > 9, p-value < 0.05; **Figure 1D,E**, **Figure 1—source data 1**). While the perturbation of these interactions is not sufficient to perturb B56 function in supporting mitotic timing in HeLa cells (**Figure 1—figure supplement 2A,B,C**), it does reveal that the B56 acidic patch is a key binding determinant for a subset of LxxlxE containing PP2A-B56 interactors (**Figure 1D,E**).

To delineate the contribution of the acidic patch, we investigated the molecular site in KIF4A, RepoMan, NHS and AIM1 that is responsible for binding the B56 acidic patch. We reasoned that the B56 acidic patch interacts with a complementary basic patch in B56 interactors. Analysis of the primary sequences of these regulators highlighted the presence of a conserved basic charged rich region within ~15 amino acid N-terminal to an established LxxlxE motif, which we defined as a basic patch (**Figure 2A**, **Figure 2—figure supplement 1**). To measure the contribution of each basic patch to B56 binding, we used isothermal titration calorimetry (ITC). The data showed that mutating the KIF4A basic patch (*bpm*, basic patch mutant: ¹²⁰⁸KKK¹²¹⁰ to AAA) reduced the affinity of KIF4A₁₁₉₂₋₁₂₃₂ for B56 γ by ~4 fold (**Figure 2B,C,D**, **Table 1**, **Figure 2—figure supplement 2A,B**). Similarly statistically significant reduced affinities were observed when the basic patch motif of RepoMan, NHS and AIM1 were mutated (CDCA2/RepoMan ⁵⁶³RKKK⁵⁶⁶ to AAAA; NHS ¹⁶¹⁸RCR¹⁶²⁰ to ACA; AIM1

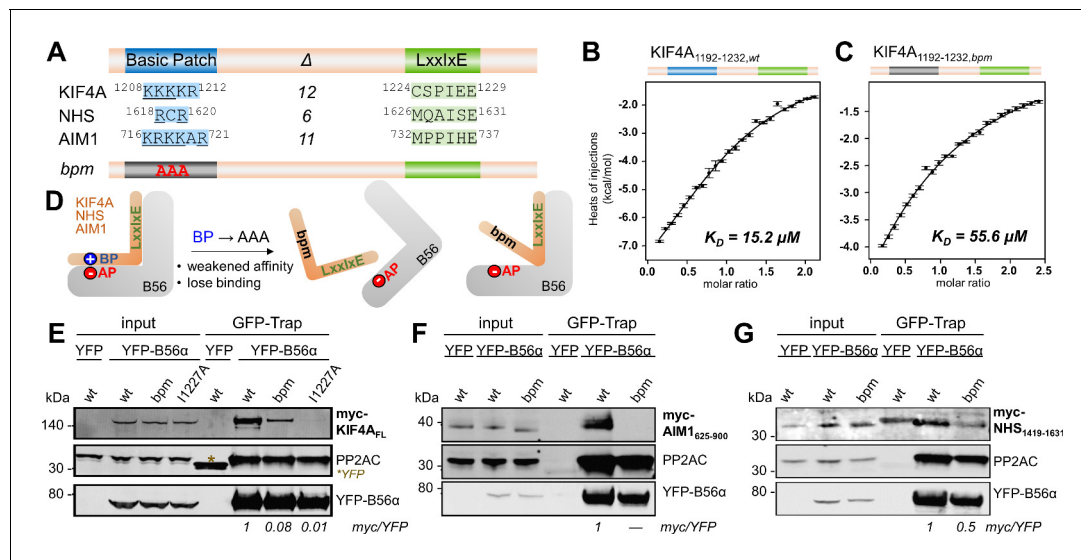


Figure 2. KIF4A binds to B56 via a conserved basic patch and an LxxlxE motif. (A) B56 interactors with the basic patch (blue) and LxxlxE motif (green) sequences shown; Δ indicates the number of residues between the basic patch and the LxxlxE motif. (B) Binding isotherm of WT KIF4A₁₁₉₂₋₁₂₃₂ with B56 γ . (C) Binding isotherm of KIF4A_{1192-1232,bpm} (¹²⁰⁸KKK¹²¹⁰ to AAA) with B56 γ . (D) Cartoon representation of the effect of mutating the basic patch (BP) of the bp-dependent interactors on their interaction with B56 (AP, acidic patch). (E) Immunoprecipitation of YFP-B56 α from cells stably expressing YFP-B56 α and transfected with the indicated myc-tagged full-length KIF4A variants; asterisk indicates YFP, which was used as a control. The amounts of myc-KIF4A_{FL} co-purified with YFP-B56 α were normalized to the band intensity of YFP. The wt is set to 1. (F) Immunoprecipitation of YFP-B56 α from cells stably expressing YFP-B56 α and transfected with the indicated myc-tagged AIM1₆₂₅₋₉₀₀ variants. The amounts of myc-AIM1₆₂₅₋₉₀₀ co-purified with YFP-B56 α were normalized to the band intensity of YFP. (G) Immunoprecipitation of YFP-B56 α from cells stably expressing YFP-B56 α and transfected with the indicated myc-tagged NHS₁₄₁₉₋₁₆₃₁ variants. The amounts of myc-NHS₁₄₁₉₋₁₆₃₁ co-purified with YFP-B56 α were normalized to the band intensity of YFP.

The online version of this article includes the following figure supplement(s) for figure 2:

Figure supplement 1. The basic patches of PP2A-B56 basic patch-specific interactors are conserved throughout evolution.

Figure supplement 2. ITC thermograms for various PP2A-B56 interactors (WT and bpm) with B56 γ (WT and acidic patch mutants).

Figure supplement 3. Mutating the basic patch or the LxxlxE motif of KIF4A reduces KIF4A:B56 binding.

Table 1. Isothermal titration calorimetry (ITC) measurements between B56 γ and KIF4A.

B56 γ ₁₂₋₃₈₀	Titrant	K _D (μ M)*	Δ H (kcal/mol)	T Δ S (kcal/mol)
WT	KIF4A [‡] WT	15.2 \pm 0.1	-11.7 \pm 0.7	-5.1 \pm 0.7
WT	KIF4A _{bpm} [†] (K1208A/K1209A/K1210A)	55.6 \pm 16.8	-11.5 \pm 2.2	-5.6 \pm 2.4
WT	KIF4A _{LE} (C1224L/S1225E)	0.32 \pm 0.01	-10.0 \pm 0.1	-2.0 \pm 0.1
WT	KIF4A _{LE,PE} (C1224L/S1225E/A1231P/H1232E)	0.10 \pm 0.01	-13.1 \pm 1.1	-3.6 \pm 1.1
WT	KIF4A _{LE,PE,bpm} (K1208A/K1209A/K1210A/C1224L/S1225E/A1231P/H1232E)	0.22 \pm 0.02	-10.7 \pm 0.1	-1.6 \pm 0.3
E310R D313R	KIF4A _{LE,PE} (C1224L/S1225E/A1231P/H1232E)	0.19 \pm 0.01	-11.7 \pm 0.1	-2.5 \pm 0.1
E276R E310R D313R	KIF4A _{LE,PE} (C1224L/S1225E/A1231P/H1232E)	0.21 \pm 0.01	-8.2 \pm 0.4	-0.9 \pm 0.3
WT	RM [§] WT	0.13 \pm 0.01	-6.0 \pm 0.1	3.3 \pm 0.1
WT	RM _{bpm} (R563A/K564A/K565A/K566A)	0.28 \pm 0.01	-7.5 \pm 0.1	1.4 \pm 0.1
WT	NHS [¶] WT	4.9 \pm 0.9	-17.0 \pm 2.2	-9.8 \pm 2.1
WT	NHS _{bpm} (R1618A/R1620A)	54.5 \pm 16.9	-18.1 \pm 2.7	-12.2 \pm 2.5
WT	AIM1 ^{**} WT	0.80 \pm 0.09	-9.2 \pm 0.4	-0.9 \pm 0.5
WT	AIM1 _{bpm} (K716A/R717A/K718A/K719A/K721A)	14.9 \pm 1.8	-8.2 \pm 0.2	-1.6 \pm 0.2

*All reported measurements are performed with ITC buffer (50 mM sodium phosphate pH 7.5, 150 mM NaCl, 0.5 mM TCEP). Errors are from duplicate or triplicate measurements.

[†] bpm, basic patch mutant.

[‡] KIF4A variants, KIF4A₁₁₉₂₋₁₂₃₂.

[§] RepoMan (RM) variants, RM₅₃₃₋₆₀₃.

[¶] NHS variants, NHS₁₆₁₆₋₁₆₃₅.

** AIM1 variants, AIM1₇₁₆₋₇₄₁.

⁷¹⁶KRKKAR⁷²¹ to AAAAAA; **Table 1, Figure 2—figure supplement 2C–H**). Together, these data illustrate that the key role of proximally located basic patches for B56 binding.

To determine if this change in affinity also alters B56 binding in cells, we generated myc-tagged constructs of KIF4A, NHS and AIM1 either as WT or a version where the basic patch was mutated (*bpm*). For KIF4A, we also mutated the LxxIxE motif by mutating the key Ile residue to Ala (I1227A). We then expressed these variants in a cell line stably expressing inducible YFP-B56 α and the binding to the myc-tagged variants monitored by affinity purifying YFP-B56 α and blotting against the myc-tag. Although all three KIF4A variants (wt, bpm and I1227A) expressed to similar levels, only the WT KIF4A co-purified efficiently with B56 α (**Figure 2E**). Similar results were obtained for a myc-tagged basic patch and LxxIxE containing fragment of KIF4A₁₀₀₁₋₁₂₃₂ (**Figure 2—figure supplement 3A**), AIM1₆₂₅₋₉₀₀ (**Figure 2F**) and NHS₁₄₁₉₋₁₆₃₁ (**Figure 2G**). Together, these data show that, for a subset of PP2A-B56 interactors, the basic patch motif contributes significantly to B56 binding.

The binding contribution of the basic patch motif is independent of the strength of the LxxIxE motif

One possible role of the basic patch motif is to selectively enhance B56 affinity for more weakly binding LxxIxE motifs. The LxxIxE motifs have a range of affinities for B56, from stronger (i.e., TLSIKKL(_pS)PIIEDDREADH, phosphorylated BUBR1: K_D, 0.55 μ M) to weaker (i.e., LSTLREQSSQS, Emi2: K_D, 41 μ M) (**Hertz et al., 2016**). The KIF4A LxxIxE motif peptide (CSPIIEEAH), like that of Emi2, was previously shown to bind B56 weakly (K_D, 32 μ M) (**Hertz et al., 2016**). The basic charged motif may not contribute significantly to B56 binding in presence of a tight LxxIxE motif. In order to test this, the KIF4A sequence was mutated to the stronger LxxIxE motif by mutating ¹²²⁴CS¹²²⁵ to LE (KIF4A_{LE}; the structures of B56 γ :LxxIxE complexes show that the 'L, Leu' binds the deep hydrophobic pocket on B56 γ while the 'E, Glu' mimics a phosphorylated Ser, which forms multiple salt bridges with B56 γ residues H187, R188 [these residues are conserved in all B56 isoforms]). The affinity of

KIF4A_{1192-1232,LE} for B56 γ increased 50-fold compared to WT KIF4A (Table 1, Figure 2—figure supplement 2I; K_D of 0.32 μ M). Mutating KIF4A_{LE} residues ¹²³¹AH¹²³² to PE (KIF4A_{LE,PE}: the ‘P, Pro’ positions the ‘E, Glu’ to form a bidentate salt bridge with B56 γ _{R201} Wang et al., 2016) further enhanced KIF4A binding (K_D of 0.10 μ M; Table 1, Figure 2—figure supplement 2J). To determine if the basic patch also contributed to B56 γ -KIF4A binding in a tight LxxIxE background, we used ITC. Mutating the KIF4A_{LE,PE} basic patch (¹²⁰⁸KKK¹²¹⁰ to AAA) again reduced the binding affinity by ~2 fold (K_D of 0.22 μ M; Table 1, Figure 2—figure supplement 2K), a reduction similar to that observed for WT KIF4A (Table 1, Figure 2B,C, Figure 2—figure supplement 2A,B). This was further confirmed with myc-tagged KIF4A_{LE} and KIF4A_{LE,bpm} variants in cells, showing that while the KIF4A_{LE} variant binds more tightly to B56 α compared to WT, mutating the basic patch (KIF4A_{LE,bpm}) again reduced binding (Figure 2—figure supplement 3B). Together, these data show that the basic patch, together with the LxxIxE motif, are critical for a subset of regulators, including KIF4A, to stably interact with B56, independent of the strength of the LxxIxE motif.

The basic patch retains its structural disorder when bound to PP2A:B56

To understand how, at a molecular level, the ¹²⁰⁸KKKR¹²¹² basic patch binds B56, we used NMR spectroscopy. An overlay of the 2D [¹H, ¹⁵N] HSQC spectra of ¹⁵N-labeled KIF4A_{1192-1232,LE,PE} in the presence and absence of B56 γ showed that multiple peaks disappear upon complex formation (Figure 3A). Specifically, KIF4A residues 1207 to 1232, which includes the basic patch and the LxxIxE motif, were broadened beyond detection upon binding B56 γ . The peaks corresponding to the residues between the two motifs (residues 1213 to 1224) were also broadened beyond detection, indicating this region either is involved in binding or that the conformational freedom of the linker is limited, due to the anchoring of the basic patch and the LxxIxE motifs to B56 γ . A crystal structure of the KIF4A_{1192-1232,LE,PE}:B56 γ complex (Figure 3—figure supplement 1; Table 2) showed that while the LxxIxE motif is well-ordered, electron density corresponding to a single conformation of the basic patch bound to B56 was, as expected, not observed. A crystal structure of the AIM1₇₁₆₋₇₄₁:B56 γ complex (Figure 3—figure supplement 1; Table 2) was similar. Namely, while the AIM1 LxxIxE motif was well-ordered, electron density corresponding to a single conformation of the basic patch bound to B56 was not observed. Together, these data, coupled with the ITC results, show that the KIF4A basic patch interaction with B56 belongs to an emerging class of biomolecular complexes in which one or more partners of the complex retains their structural disorder upon complex binding. That is, the basic charged patch of KIF4A binds B56 γ but does so via dynamic, rapidly interchanging conformations even when bound to B56.

The current data suggest that this emerging class of biomolecular interactions is driven almost exclusively by electrostatics (Borgia et al., 2018). To confirm that the KIF4A basic patch interacts dynamically with the conserved acidic patch on B56 (Figure 1B), we used mutagenesis coupled with NMR spectroscopy. Specifically, the interaction of ¹⁵N-labeled KIF4A_{1192-1232,LE,PE} with four distinct B56 γ acidic patch variants was tested: (1) B56_{2R}, E310R/D313R, (2) B56_{2Rb}, E276R/E316R, (3) B56_{3R}, E276R/E310R/E316R and (4) B56_{4R}, E276R/D313R/E310R/E316R (Figure 3B, Figure 3—figure supplement 2). The NMR data showed that the peaks corresponding to the KIF4A basic patch residues are present only with B56 variants with mutated acidic patch residues (Figure 3B,C). That is, they no longer interact with these variants of B56 (Figure 3D). Consistent with these results, ITC showed that KIF4A binds the B56 γ acidic patch variants more weakly (Table 1, Figure 2—figure supplement 2L,M). Interestingly, mutating only E310R/D313R was sufficient to reduce the binding affinity to the same extent as mutating the basic patch in KIF4A (K_D : 0.19 \pm 0.01 μ M and 0.21 \pm 0.01 μ M for B56 γ _{2R}:KIF4A_{LE,PE}, and B56 γ :KIF4A_{LE,PE,bpm}, respectively, Table 1, Figure 2—figure supplement 2L); additional mutations (i.e., E276R/E310R/D313R) did not further affect the binding (Table 1, Figure 2—figure supplement 2M). In agreement with this result, we found that the binding of KIF4A and other bp-containing B56 interactors to B56 in cells was dependent on both an intact acidic patch in B56 (Figure 3E, Figure 3—figure supplement 3) and an intact basic patch in KIF4A, as even single amino acid substitutions in the KIF4A basic patch lowered binding (Figure 3F). This requirement of the acidic patch for binding is consistent with a charge-charge interaction where KIF4A interacts with B56 in a dynamic manner and each amino acid contributes similarly to the overall K_D . Together, these data show that the KIF4A basic patch interacts directly with the B56 conserved acidic patch and this interaction is critical for KIF4A binding.

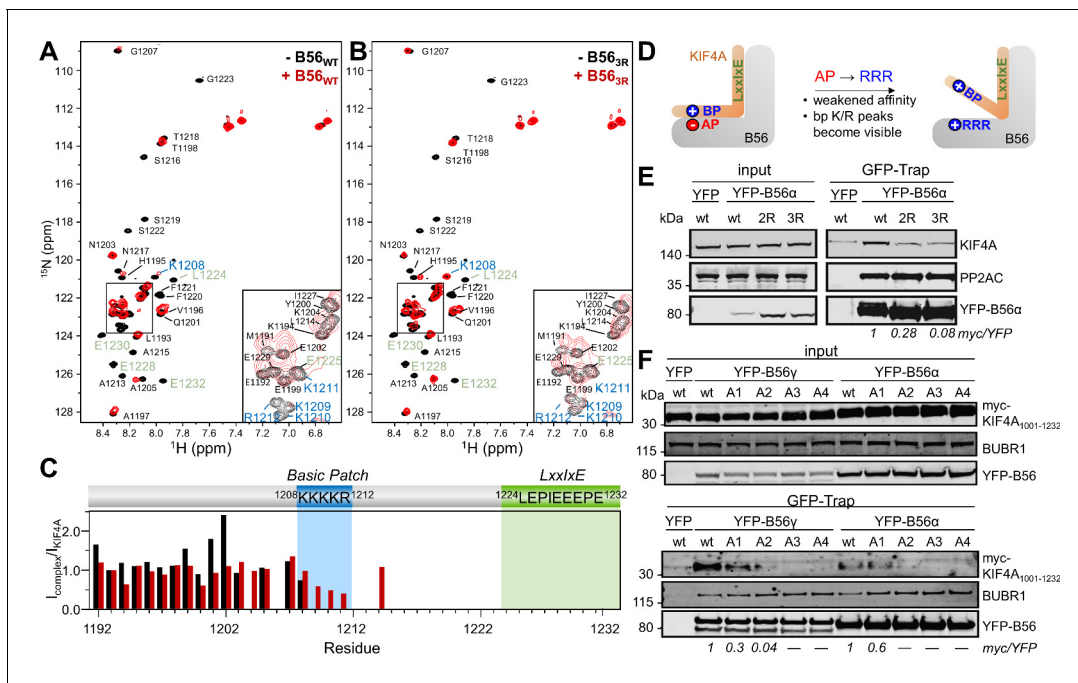


Figure 3. The basic patch in B56-specific regulators binds B56 via a dynamic charge-charge interaction. (A) Overlay of the 2D $[^1\text{H}, ^{15}\text{N}]$ HSQC spectra of ^{15}N -labeled KIF4A_{1192-1232,LE,PE} in the presence (red) and absence (black) of B56 γ (1:1 ratio); basic patch and LxxlxE residues labeled blue and green, respectively. (B) Overlay of the 2D $[^1\text{H}, ^{15}\text{N}]$ HSQC spectra of ^{15}N -labeled KIF4A_{1192-1232,LE,PE} in the presence (red) and absence (black) of B56 γ_{3R} E276R/E310R/E316R (1:1 ratio); basic patch and LxxlxE residues highlighted in blue and green, respectively. (C) $[^1\text{H}, ^{15}\text{N}]$ HSQC peak intensity ratios for spectra shown in A, B (black, red, respectively). (D) Cartoon representation of the effect of mutating the acidic patch (AP) of B56 on KIF4A:B56 binding (AP: acidic patch, BP: basic patch). (E) Immunoprecipitation of stably expressed YFP-B56 α variants (wt, B56 α_{2R} : E335R/D338R, and B56 α_{3R} : E301R/E335R/D338R) and probed for endogenous KIF4A, PP2AC (PP2A catalytic subunit) and GFP (YFP-B56 α). (F) Immunoprecipitation of transiently transfected myc-tagged KIF4A₁₀₀₁₋₁₂₃₂ C-terminal variants (A1: K1208A; A2: $^{1208}\text{KK}^{1209}$ to AA; A3: $^{1208}\text{KKK}^{1210}$ to AAA; A4: $^{1208}\text{KKKK}^{1211}$ to AAAAA) from cells stably expressing YFP-B56 α or YFP-B56 γ . The amounts of myc-KIF4A co-purified with YFP-B56 were normalized to the band intensity of YFP. The online version of this article includes the following figure supplement(s) for figure 3:

Figure supplement 1. Crystal structures of KIF4A_{LE,PE}:B56 γ complex and AIM1:B56 γ .

Figure supplement 2. Mutating the acidic patch of B56 γ reduces the binding of the KIF4A basic patch to B56 γ .

Figure supplement 3. Mutating the acidic patch of B56 reduces KIF4A:B56 and RepoMan:B56 binding in cells.

KIF4A dephosphorylation by PP2A:B56 requires the KIF4A basic patch

To determine if the basic charge motif in KIF4A affects dephosphorylation of KIF4A T799, a residue phosphorylated by Aurora B kinase during cytokinesis, we generated a T799 phospho-specific antibody (*Bastos et al., 2014*). Strikingly, the observed phosphorylation level of T799 was inversely correlated with affinities of PP2A-B56 for the different KIF4A variants in mitotic cells (*Figure 4A*). Specifically, mutating either the LxxlxE motif (I1227A) or the basic patch ($^{1209}\text{KKK}^{1211}$ to AAA) resulted in an increase of phosphorylation of T799, as less PP2A-B56 was recruited to counteract the activity of Aurora B kinase. Further, this phenotype was rescued by enhancing the LxxlxE motif binding affinity; namely, introducing the $^{1224}\text{CS}^{1225}$ to LE mutation in KIF4A_{bpm} (KIF4A_{LE,bpm}) increased the amount of PP2A recruited and, in turn, the amount of KIF4A dephosphorylated. Together, these data show that the dephosphorylation of KIF4A T799 by PP2A-B56 requires the basic patch as the PP2A-B56 dephosphorylation efficacy is directly correlated with PP2A-B56 affinity.

KIF4A chromosome targeting and PP2A-B56 binding are mutually exclusive as both KIF4A functions strictly require the basic patch

KIF4A is a chromosome-binding kinesin that is important for maintaining normal chromosome architecture during cell division (*Mazumdar et al., 2004*). To determine if the KIF4A basic patch has a mitotic function, we performed RNAi complementation assays in cells where we depleted KIF4A and hKid and then induced the expression of the different YFP-tagged KIF4A variants (*Figure 4B,C,D*;

Table 2. Data collection and refinement statistics.

	B56:KIF4A_{LE,PE}^{*,†}	B56:AIM1^{*,‡}
PDB	6OYL	6VRO
Data collection		
Space group	P 2 ₁ 2 ₁ 2 ₁	I4
Cell dimensions		
<i>a</i> , <i>b</i> , <i>c</i> (Å)	53.3, 108.0, 117.8	111.0, 111.0, 108.9
<i>A</i> , <i>β</i> , <i>γ</i> (°)	90, 90, 90	90, 90, 90
Resolution (Å)	39.52–3.15	39.26–2.45
<i>R</i> _{merge}	0.100 (1.104)	0.091 (1.721)
Mean <i>I</i> / <i>σI</i>	11.5 (1.8)	12.4 (1.2)
Completeness (%)	96.6 (83.1)	99.8 (99.4)
Multiplicity	8.2 (7.7)	7.0 (7.0)
CC _{1/2}	0.999 (0.730)	0.999 (0.673)
Refinement		
Resolution (Å)	39.52–3.15 (3.26–3.15)	38.88–2.45 (2.54–2.45)
No. reflections	11868	24208
<i>R</i> _{work} / <i>R</i> _{free}	0.22 (0.36)/0.24 (0.41)	0.22 (0.33)/0.23 (0.38)
No. atoms		
Protein	2796	2777
Water	7	36
<i>B</i> -factors		
Protein	66.4	70.1
Water	60.4	62.1
RMS deviations		
Bond lengths (Å)	0.002	0.002
Bond angles (°)	0.54	0.54
Ramachandran		
Outliers (%)	0.3	0.9
Allowed (%)	5.8	3.4
Favored (%)	93.9	95.7
Clashscore	4.3	2.7

*Data was collected from a single crystal.

†KIF4A_{LE,PE}¹¹⁹²ELKLVATEYQENKAPGKKKKRALASNTSFFSGLEPIEEPE¹²³².

‡AIM1⁷¹⁶KRKKARMPNSPAPHFAMPPIHEDHLE⁷⁴¹.

*Values in parentheses are for highest-resolution shell.

KIF4A and hKid are simultaneously depleted because they have nearly fully redundant functions during mitosis (Wandke et al., 2012). Depleting both KIF4A and hKid resulted in a strong mitotic delay, with multiple unaligned chromosomes. As expected, this phenotype was fully rescued by complementation with WT YFP-KIF4A. However, mutating the basic patch (bpm) resulted in a non-functional KIF4A and this variant failed to localize to mitotic chromosomes (Figure 4C, bottom panel). Further analysis revealed that this defect in KIF4A function due to the bpm was not due to a lack of PP2A-B56 binding, as evidenced by the observation that the I1127A variant fully rescued both the mitotic timing and the chromosome alignment phenotypes (Figure 4C, middle panel, Figure 4D). This demonstrates that the KIF4A basic patch has a function in mitosis, which is distinct from its role in PP2A-B56 binding.

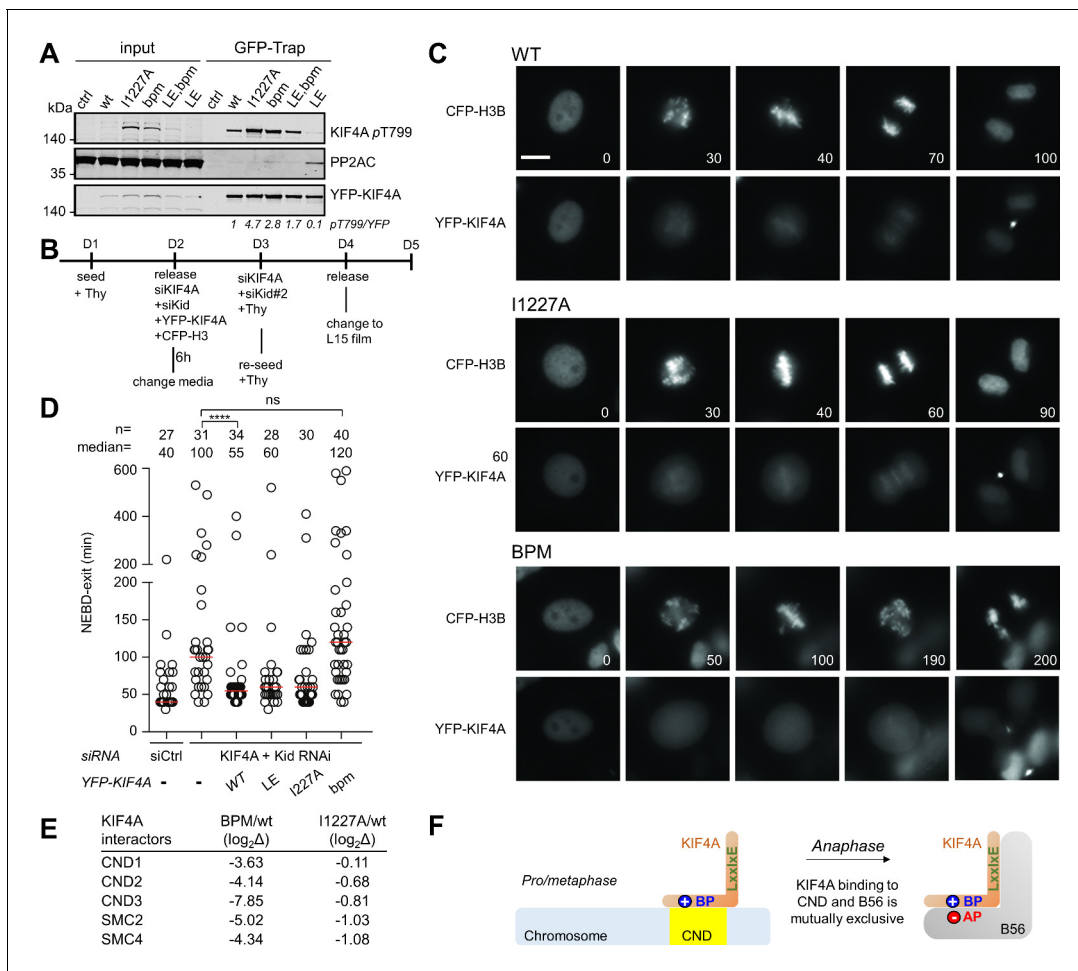


Figure 4. The basic patch regulates KIF4A dephosphorylation by PP2A, as well as KIF4A localization in cells. **(A)** The indicated YFP-KIF4A constructs were purified using GFP-Trap and analyzed for phosphorylation by immunoblotting. The T799-phospho signal was normalized to YFP. YFP only was used as a control. **(B)** Endogenous KIF4A was depleted by RNAi and complemented with the indicated YFP-KIF4A variants. **(C)** Live cell imaging of cells expressing YFP-KIF4A variants as they go through mitosis. The beginning of the NEBD was considered as time 0 (min). Bar represents 5 μ m. CFP, cyan fluorescent protein. **(D)** Quantification of mitotic duration. Circles represent single cells. The number of cells and median (red line) times are indicated from at least two independent experiments. Mann-Whitney test was used to determine the p-values indicated. **** p < 0.0001; * p < 0.05; ns, not significant. **(E)** The mass spectrometry-identified condensin complex associated proteins co-purifying with YFP-KIF4Awt versus KIF4A_{bpm} or KIF4A_{I1227A} from mitotic HeLa cells stably expressing YFP-KIF4A variants. **(F)** The binding of chromosome and B56 to KIF4A is mutually exclusive because both binding events strictly require the basic patch.

The online version of this article includes the following source data for figure 4:

Source data 1. Separate excel.

To determine if additional proteins bind specifically to the KIF4A basic patch, we purified the different KIF4A mutants from mitotic arrested cells and identified the interacting proteins using MS. These data showed that the abundance of all components of the condensin I complex were strongly reduced in the KIF4A bpm variant (Figure 4E, Figure 4—source data 1), data that are consistent with the observation that this variant does not localize to chromosomes (Figure 4C, bottom panel). In contrast, the abundance of the components of the condensin I complex with the I1227A variant was unaffected, consistent with the ability of this variant to properly target chromosomes during mitosis (Figure 4C, middle panel). These data confirm that the basic patch has a second, independent function; namely, it targets KIF4A to chromosomes by binding condensin I. Because we show that both condensin I and PP2A-B56 binding strictly require the basic patch, KIF4A cannot bind both proteins simultaneously, that is, condensin I and PP2A-B56 binding by KIF4A is mutually exclusive

(Figure 4F). These data reveal how additional motifs in PP2A-B56 substrates can modulate PP2A-B56 binding to control phospho-dependent signaling in cells.

Discussion

The traditional view of protein binding is one in which the interacting proteins have well-defined, complementary interfaces (Lee and Richards, 1971). However, an emerging mode of binding is that in which one or both proteins exhibit different degrees of disorder in the bound complex (Berlow et al., 2015). In particular, the role of highly dynamic, charge-charge interactions that lack well-defined complementary interfaces are becoming increasingly recognized for their central roles in biomolecular interactions and, in turn, a diversity of biological processes like signaling (Borgia et al., 2018). The advantage of such a dynamic interaction is that it facilitates fast and responsive regulation. Further, the associated conformational fluctuations also provide ready access for enzymes that mediate post-translational modifications. Because IDPs are not only widely prevalent in eukaryotic genomes (Brown et al., 2002), but also unusually enriched in charged amino acids (Habchi et al., 2014), the emerging view is that electrostatically-driven dynamic protein:protein interactions are critical for many biological functions.

Here we describe a novel dynamic, charge-charge interaction for a major protein phosphatase, PP2A-B56, which significantly contributes to our understanding of the diversity of mechanisms used by this phosphatase to select its substrates. This novel interaction is mediated by a patch of basic residues that dynamically bind a highly conserved acidic surface present on all B56 isoforms and therefore constitutes a novel pan PP2A-B56 binding motif (Figure 5). Charge-charge interactions are generally weak (low μM to mM), yet are becoming increasingly recognized for their importance in increasing the binding affinity of protein:protein interactions, in part by lowering entropy (Bertran et al., 2019; Borgia et al., 2018; Luo et al., 2016; Sharma et al., 2015). Further, their

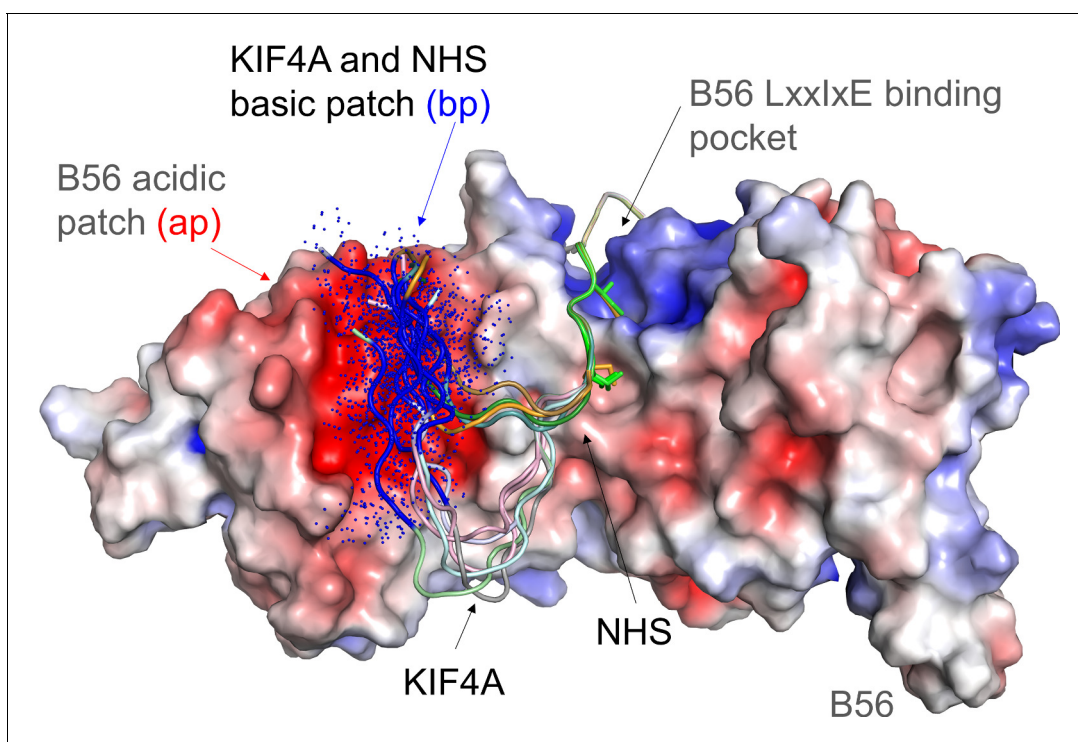


Figure 5. Model of the dynamic interaction between the KIF4A basic patch (BP) and the B56 acidic patch. B56 is shown as an electrostatic surface with KIF4A and NHS shown as cartoons. The LxxlxE sequences of KIF4A and NHS bind B56 in a single conformation in the LxxlxE binding pocket (NHS sequence in this pocket modeled using the KIF4A structure, PDBID). As can be seen by these models (generated using COOT and PYMOL), the KIF4A (KKKKR) and NHS (RCR) basic patches (bp, colored dark blue) are optimally positioned to interact dynamically with the B56 acidic patch (ap, red). The dots reflect that these sequences do not adopt a single conformation, but instead retain their intrinsic disorder when bound to the acidic patch.

emerging role in regulating the protein:protein interactions of PPPs with their substrates and regulators is only now beginning to be fully understood. For example, the unrelated B55 subunit also recognizes basic stretches of residues in substrates (Cundell *et al.*, 2016) but clearly the substrates for PP2A-B55 and PP2A-B56 are distinct. Thus, additional interactions confer specificity. In the case of PP2A-B56 the binding affinity provided by the basic patch motif is insufficient for B56 binding and requires the presence of an LxxIxE motif, which is specific for B56, in the interactor as well. Thus, the function of the dynamic basic patch is to modulate and enhance the interactions mediated by the LxxIxE motif. It may also facilitate LxxIxE binding by providing an initial docking interaction after which the stronger LxxIxE stabilizes substrate binding; this is consistent with the view that long-range dynamic electrostatic interactions may function as an initial 'tether', after which the specific hydrophobic interactions that, in this case, define the LxxIxE-B56 complex, stabilize binding (Borgia *et al.*, 2018). Finally, we show that the presence and contribution of the basic patch is important for a number of interaction partners to bind PP2A-B56 underscoring its relevance and generality.

In the case of KIF4A, we also show that the basic patch motif has a second function. Namely, it is strictly required for KIF4A association with chromatin via condensin I binding; see also Poser *et al.* (2019). Because both KIF4A functions, binding to PP2A-B56 and condensin, strictly require the basic patch, the binding of both proteins to KIF4A is mutually exclusive. This implies that KIF4A only binds PP2A-B56 upon dissociation from chromosomes, consistent with the reported function of the KIF4A-PP2A-B56 complex in regulating the anaphase central spindle (Bastos *et al.*, 2014). Since basic patch motifs resemble nuclear localization motifs (NLSs) recognized by importin α/β , the basic patch motifs would also be inaccessible for PP2A-B56 binding during nuclear transport (Lange *et al.*, 2007). Thus, the accessibility of basic patch motifs provide an additional layer of regulation that shapes the PP2A-B56 interaction and dephosphorylation landscape in cells. Together, these discoveries are advancing our understanding of how, at a molecular level, PP2A-B56 engages its substrates and how these interactions are subject to additional regulation via competition for other binding interactions, which has broad implications for understanding cellular signaling.

Materials and methods

Sequence alignment

The ConSurf server (using 150 unique B56 sequences with the lowest E values) was used to calculate the conservation scores illustrate in **Figure 1A** (Ashkenazy *et al.*, 2016). Clustal Omega (Madeira *et al.*, 2019) was used to generate sequence alignments in **Figure 1C**, **Figure 1—figure supplement 1** and **Figure 2—figure supplement 2**. The following species are included in **Figure 1—figure supplement 1**: *Homo sapiens* (human), *Mus musculus* (mouse), *Gallus gallus* (chicken), *Danio rerio* (fish), and *Xenopus laevis* (frog), *Candida albicans* (Candida), *Arabidopsis thaliana* (*A. thaliana*), *Chlamydomonas reinhardtii* (Algae).

Cloning and expression

Human B56 γ 1 (B56 γ ₁₂₋₃₈₀ and B56 γ ₃₁₋₃₈₀) was sub-cloned into the pRP1b vector (Peti and Page, 2007). B56 γ ₁₂₋₃₈₀ and B56 γ ₃₁₋₃₈₀ were expressed in *E. coli* BL21 (DE3) (Agilent). Cells were grown in Luria Broth in the presence of selective antibiotics at 37°C to an OD₆₀₀ of ~0.8, and expression was induced by the addition of 0.5 mM isopropyl β -D-thiogalactoside (IPTG). Induction proceeded for ~18–20 hr at 18°C prior to harvesting by centrifugation at 6000 xg. Cell pellets were stored at –80°C until purification. Human KIF4A (KIF4A₁₁₉₂₋₁₂₃₂) and RepoMan (RepoMan₅₆₀₋₆₀₃) were sub-cloned into a MBP-fusion vector. Mutants were generated using the QuikChange site-directed mutagenesis kit (Agilent) and sequence confirmed. KIF4A₁₁₉₂₋₁₂₃₂ and RepoMan₅₆₀₋₆₀₃ variants were expressed in *E. coli* BL21 (DE3-RIL) (Agilent). Cells were grown in Luria Broth in the presence of selective antibiotics at 37°C to an OD₆₀₀ of ~0.6, and expression was induced by the addition of 0.5 mM isopropyl β -D-thiogalactoside (IPTG). Induction proceeded for 5 hr at 37°C prior to harvesting by centrifugation at 6000 xg. Cell pellets were stored at –80°C until purification.

Mammalian expression constructs were cloned into pcDNA5/FRT/TO and derivatives of this vector using standard cloning procedures. Point mutations were introduced by whole plasmid PCR

using complementary primers containing the mutations and confirmed by full sequencing of insert. YFP tagged versions of B56 α and B56 γ were described previously (Kruse *et al.*, 2013).

Generation of stable cell lines

The generation of stable HeLa cell lines expressing constructs under the control of a doxycycline-inducible promoter was carried out as previously described (Hein and Nilsson, 2014).

Cell culture

HeLa-FRT stable cell lines and HeLa cells were passaged in DMEM supplemented with 10% fetal bovine serum (FBS, HyClone) and 1% penicillin-streptomycin (Life Technologies). Protein expression was induced by the addition of doxycycline (Clontech Laboratories) at final concentration of 4 ng/ml.

Transfection and RNAi

For biochemical experiments cells were transfected with 1.5 μ g plasmid and Lipofectamine 2000 (2 μ l/ml) for 5 hr, where applicable.

B56 RNAi rescue

B56 RNAi depletion was done using the following protocol: 250 μ l transfection mix with 2 μ l siRNA Max (Invitrogen) and 1 μ l siRNA oligo (stock concentration 10 μ mol) in Optimem (Life Technologies) was added to 750 μ l Optimem in 6-well dishes with cells. After 5–6 hr of treatment, FBS was added (10%) until the medium was changed the next day. B56 isoforms were depleted using Dharmacon oligonucleotides against B56 α (UGAAUGAACUGGUUGAGUAAU), B56 γ (GGAAGAUGAACCAACGUAAUU), B56 δ (UGACUGAGCCGGUAAUUGUUU) and B56 ϵ (GCACAGCUGGCAUAAUUGUAAU) and used at final concentration of 20 nmol (80 nmol total for all four isoforms). Luciferase (Sigma) was used as control. In live cell experiments, YFP-B56 expressing HeLa FRT cell lines were depleted by RNAi 48 hr and 24 hr prior to filming. For KIF4A live cell experiments cells were treated with RNAi 48 hr prior to imaging. YFP-tagged proteins were induced before imaging by the addition of 0.5 ng/ml Doxycycline.

KIF4A RNAi rescue

HeLa cells were seeded in 6-well plates and synchronized by thymidine the day before transfection. Double RNAi against Kid (CAAGCUCACUCGCCUAAUUGTT) and KIF4A (GAAAGATCCTGGC TCAAGA) were performed at 48 and 24 hr before live cell imaging analysis. 800 ng of YFP-tagged wild type KIF4A and mutant plasmids were co-transfected with 30 ng of CFP-Histone3 and RNAi oligos in the first RNAi. Thymidine was added again in the second transfection. After the second RNAi, the cells were re-seeded into 8-well chamber dishes (Ibidi). Cells were released from thymidine in the morning for live cell imaging, which was performed 5 hr later on a DeltaVision Microscope (GE Healthcare).

Microscopy

Cells were seeded in an 8-well chamber dishes (Ibidi) the day before imaging. After changing the medium to L-15 (Life Technologies) supplemented with 10% FBS and 0.5 ng/ml Doxycycline (where applicable) cells were imaged on a DeltaVision Elite microscope (GE Healthcare) using a 40 \times oil immersion objective (1.35 NA, WD 0.10). DIC and YFP channels were imaged with 5 min intervals for 17 hr, taking three z-stacks 5 μ m apart. SoftWork software (GE Healthcare) was used for data analysis. Cells expressing within a certain YFP expression window was all analyzed while cells expressing high levels of YFP tagged proteins was excluded from the analysis. ImageJ (NIH) was used to extract still images.

Immunoprecipitation

Cells were seeded and transfected with myc-tagged constructs (where applicable) on the day after seeding. Following 24 hr thymidine (2.5 mM) block, cells were released into Nocodazole (200 ng/ml) overnight. Inducible cell-lines (YFP-B56, YFP-KIF4A or YFP) were induced 24 hr prior collection with 4 ng/ml Doxycycline. Mitotic cells were collected by shake-off. Cells were lysed in low salt lysis buffer (50 mM Tris pH 7.4, 50 mM NaCl, 1 mM EDTA, 1 mM DTT, 0.1% vol/vol NP40), supplemented with

protease and phosphatase inhibitors (Roche) for 25 min on ice. Lysates were cleared for 15 min at 20,000 xg. Lysates were incubated with 10 μ l pre-equilibrated GFP-trap beads (Chromotek) for 1 hr at 4°C and rotation. Beads were washed three times with lysis buffer and eluted in 25 μ l 2x LSB (Life Technology) supplemented with 10% β -mercaptoethanol.

Western blotting

Following SDS-PAGE separation, gels were blotted onto Immobilon FL membrane (Millipore). Membranes were incubated with the indicated primary antibody and subsequently with IRDye 800 or 680 secondary antibodies (Li-Cor). Membranes were scanned using the Odyssey Sa imaging system (Li-Cor) and quantification was carried out using the Odyssey Sa Application software (Li-Cor). Representative images from at least two independent experiments is shown in all figures.

Antibodies

The following antibodies were used for western-blotting: KIF4A rabbit (Cat# A301-074A; 1:1000, Bethyl laboratories), KIF4A T799 rabbit (raised against peptide CLRRR(pT)FSLT, 1:100, Moravian biotechnology), PP2A-C mouse monoclonal (Cat# 05-421, 1:2,000, Merck), C-myc mouse monoclonal (Cat# SC-40, 1:1000, Santa Cruz), GFP rabbit (raised against full length GFP, 1:10000, Moravian Biotechnology), GFP mouse monoclonal (Cat# 11814460001, 1:1000, Roche), B56 α mouse monoclonal (Cat# 610615, 1:1000, BD Transduction Laboratories), BubR1 mouse monoclonal (raised against BubR1 TPR domain, 1:1000, BRIC monoclonal antibody facility), CDC2A rabbit (Cat# HPA030049, 1:1000, Sigma).

Protein purification

B56 γ cell pellets were resuspended in ice-cold lysis buffer (50 mM Tris pH 8.0, 0.5 M NaCl, 5 mM imidazole, 0.1% Triton X-100 containing EDTA-free protease inhibitor tablet [Sigma]), lysed by high-pressure cell homogenization (Avestin C3 Emulsiflex) and centrifuged (35,000 xg, 40 min, 4°C). The supernatant was loaded onto a HisTrap HP column (GE Healthcare) pre-equilibrated with Buffer A (50 mM Tris pH 8.0, 500 mM NaCl and 5 mM imidazole) and was eluted using a linear gradient of Buffer B (50 mM Tris pH 8.0, 500 mM NaCl, 500 mM imidazole). Fractions containing the protein were pooled and dialyzed overnight at 4°C (50 mM Tris pH 8.0, 500 mM NaCl) with TEV protease to cleave the His₆-tag. The cleaved protein was incubated with Ni²⁺-NTA beads (GEHealthcare) and the flow-through collected. The protein was concentrated and purified using size exclusion chromatography (SEC; Superdex 75 26/60 [GE Healthcare]) pre-equilibrated in ITC buffer (50 mM sodium phosphate pH 7.5, 150 mM NaCl, 0.5 mM TCEP) or crystallization buffer (20 mM HEPES pH 7.8, 500 mM NaCl, 0.5 mM TCEP). Fractions were pooled, concentrated to designated concentration for experiments or stored at -80 °C. KIF4A₁₁₉₂₋₁₂₃₂ was purified similarly except that it was heated at 80°C for 10 min and centrifuged (15,000 xg, 10 min, 4°C) prior to SEC purification (SEC buffer: 20 mM HEPES pH 7.8, 500 mM NaCl, 0.5 mM TCEP).

Crystallization and structure determination

Pooled B56 γ ₃₁₋₃₈₀ (hereafter, B56) in SEC buffer was concentrated and combined with KIF4A_{1192-1232,LE,PE} or AIM1 peptide (⁷¹⁶KRKKARMPNSPAPHFAMPIIHEDHLE⁷⁴¹, Bio-Synthesis Inc), in the same buffer at a 1:5 molar ratio to a final concentration of 10 mg/ml. Crystals of the complex were identified in 0.1 M HEPES pH 7.75, 0.8 M LiCl and 8% PEG8K (B56: KIF4A_{1192-1232,LE,PE}) or 0.1 M Tris pH 8.0, 0.9 M LiCl and 9% PEG6K (B56: AIM1) using vapor diffusion hanging drops. Crystals were cryo-protected by a 30 s soak in mother liquor with 30% glycerol and immediately flash frozen. Data were collected at SSRL beamline 12.2 at 100 K and a wavelength of 0.98 Å using a Pilatus 6M PAD detector. The data were processed using XDS (Kabsch, 2010), Aimless (Evans and Murshudov, 2013) and truncate (French and Wilson, 1978). The structures of the complexes were solved by molecular replacement using Phaser (Adams et al., 2010), using B56 (PDBID 5K6S) as the search model (Wang et al., 2016). A solution was obtained in space group P2₁2₁2₁ (B56: KIF4A_{1192-1232,LE,PE}) or I4 (B56: AIM1); strong electron density for both peptides was visible in the initial maps. The initial models of the complex were built without the peptide using AutoBuild, followed by iterative rounds of refinement in PHENIX and manual building using Coot (Emsley and Cowtan, 2004). The

peptide coordinates were then added followed by iterative rounds of refinement in PHENIX and manual building using Coot. Data collection and refinement details are provided in **Table 2**.

Isothermal titration calorimetry

SEC was performed to polish B56 γ_{12-380} , RepoMan, KIF4A and exchange into ITC Buffer (50 mM sodium phosphate pH 7.5, 150 mM NaCl, 0.5 mM TCEP). Purified or purchased peptides were titrated into B56 γ_{12-380} (30 μ M) using an Affinity ITC SV microcalorimeter at 25°C (TA Instruments). Data were analyzed using NITPIC, SEDPHAT and GUSI (*Scheuermann and Brautigam, 2015; Zhao et al., 2015*).

Nuclear magnetic resonance spectroscopy

NMR data were recorded at 283 K using a Bruker Neo 600 MHz (^1H Larmor frequency) NMR spectrometer equipped with a HCN TCI active z-gradient cryoprobe. NMR Measurements of KIF4A were recorded using either ^{15}N - or $^{15}\text{N},^{13}\text{C}$ -labeled protein at a final concentration of 0.1 or 3 mM in NMR buffer (20 mM sodium phosphate pH 6.8, 200 or 50 mM NaCl, 0.5 mM TCEP) and 90% $\text{H}_2\text{O}/10\%$ D_2O . Unlabeled B56 γ_{12-38} and $^1\text{H},^{15}\text{N}$ -labeled KIF4A complex was formed via co-SEC (20 mM sodium phosphate pH 6.8, 200 mM NaCl, 0.5 mM TCEP). The sequence-specific backbone assignments of KIF4A and variants were achieved using 3D triple resonance experiments including 2D [$^1\text{H},^{15}\text{N}$] HSQC, 3D HNCA, 3D HN(CO)CA, 3D HN(CO)CACB and 3D HNCACB. All NMR data were processed using Topspin 4.0.5 and analyzed using Cara. NMR chemical shifts have been deposited in the BioMagResBank (BMRB: 27913).

Mass spectrometry

Pulldowns were performed in triplicates and analyzed by SDS gel electrophoresis followed by label-free LC-MS/MS on a Q-Exactive Plus quadrupole Orbitrap mass spectrometer (ThermoScientific) equipped with an Easy-nLC 1000 (ThermoScientific) and nanospray source (ThermoScientific) as previously described (*Petrone et al., 2016*). Peptides were resuspended in 5% methanol/1.5% formic acid and loaded on to a trap column (1 cm length, 100 μm inner diameter trap packed with ReproSil C₁₈ AQ 5 μm 120 Å pore beads (Dr. Maisch, Ammerbuch, Germany)) vented to waste via a micro-tee and eluted across a fritless analytical resolving column (35 cm length, 100 μm inner diameter fused silica packed with ReproSil C₁₈ AQ 3 μm 120 Å pore beads) pulled in-house (Sutter P-2000, Sutter Instruments, San Francisco, CA) with a 60 min gradient of 5–30% LC-MS buffer B (LC-MS buffer A: 0.0625% formic acid, 3% ACN; LC-MS buffer B: 0.0625% formic acid, 95% ACN). The Q-Exactive Plus was set to perform an Orbitrap MS scan ($R = 70\text{K}$; AGC target = $3\text{e}6$) from 350 to 1500 Thomson, followed by HCD MS² spectra on the 10 most abundant precursor ions detected by Orbitrap scanning ($R = 17.5\text{K}$; AGC target = $1\text{e}5$; max ion time = 75 ms) before repeating the cycle. Precursor ions were isolated for HCD by quadrupole isolation at width = 0.8 Thomson and HCD fragmentation at 26 normalized collision energy (NCE). Charge state 2, 3 and 4 ions were selected for MS². Precursor ions were added to a dynamic exclusion list +/- 20 ppm for 20 s. Raw data were searched using COMET in high resolution mode (*Eng et al., 2013*) against a target-decoy (reversed) (*Elias and Gygi, 2007*) version of the human (UniProt; downloaded 2/2013, 40482 entries of forward and reverse protein sequences) with a precursor mass tolerance of +/- 1 Da and a fragment ion mass tolerance of 0.02 Da, and requiring fully tryptic peptides (K, R; not preceding P) with up to three mis-cleavages. Static modifications included carbamidomethyl cysteine and variable modifications included: oxidized methionine. Searches were filtered using orthogonal measures including mass measurement accuracy (+/- 3 ppm), Xcorr for charges from +two through +4, and dCn targeting a < 1% FDR at the peptide level. Quantification of LC-MS/MS spectra was performed using MassChroQ (*Valot et al., 2011*) and the iBAQ method (*Schwanhäusser et al., 2011*). Keratin and proteins with a maximum total peptide count of 1 were removed from further analysis. iBAQ quantifications were imported into Perseus (*Tyanova et al., 2016*), and log₂ transformed. Missing values were imputed from a normal distribution to enable statistical analysis and visualization by volcano plot. Statistical analysis of protein quantification was carried out in Perseus by two-tailed Student's t-test.

Data and software availability

All NMR chemical shifts have been deposited in the BioMagResBank (BMRB 27913). Atomic coordinates and structure factors have been deposited in the Protein Data Bank (6OYL, 6VRO). The mass spectrometry proteomics data have been deposited to the ProteomeXchange Consortium (*Vizcaíno et al., 2014*) through the PRIDE partner repository (PXD013886).

Acknowledgements

This work is supported by grants R35GM119455 and P20GM113132 from the National Institute of General Medical Sciences to ANK, grant R01NS091336 from the National Institute of Neurological Disorders and Stroke and grant R01GM134683 from the National Institute of General Medical Sciences to WP and grant R01GM098482 from the National Institute of General Medical Sciences to RP. Work at the Novo Nordisk Foundation Center for Protein Research is supported by grant NNF14CC0001 and JNI is supported by grant from the Independent Research Fund Denmark (DFF-7016-00086). This research used beamline 12.2 at the Stanford Synchrotron Radiation Lightsource. Use of the Stanford Synchrotron Radiation Lightsource, SLAC National Accelerator Laboratory is supported by the US Department of Energy, Office of Science and Office of Basic Energy Sciences under Contract No. DE-AC02-76SF00515. The SSRL Structural Molecular Biology Program is supported by the DOE Office of Biological and Environmental Research and by the National Institutes of Health, National Institute of General Medical Sciences (including P41GM103393).

Additional information

Funding

Funder	Grant reference number	Author
National Institute of General Medical Sciences	R35GM119455	Arminja N Kettenbach
National Institute of General Medical Sciences	P20GM113132	Arminja N Kettenbach
National Institute of General Medical Sciences	R01GM098482	Rebecca Page
National Institute of Neurological Disorders and Stroke	R01NS091336	Wolfgang Peti
National Institute of General Medical Sciences	R01GM134683	Wolfgang Peti
Novo Nordisk	NNF14CC0001	Jakob Nilsson
Independent Research Fund Denmark	DFF-7016-00086	Jakob Nilsson

The funders had no role in study design, data collection and interpretation, or the decision to submit the work for publication.

Author contributions

Xinru Wang, Formal analysis, Investigation, Methodology, Writing - original draft, Writing - review and editing; Dimitriya H Garvanska, Formal analysis, Investigation, Methodology, Writing - review and editing; Isha Nasa, Formal analysis, Investigation, Writing - review and editing; Yumi Ueki, Gang Zhang, Investigation; Arminja N Kettenbach, Data curation, Formal analysis, Funding acquisition, Investigation, Writing - review and editing; Wolfgang Peti, Rebecca Page, Conceptualization, Resources, Data curation, Formal analysis, Supervision, Funding acquisition, Validation, Investigation, Writing - original draft, Project administration, Writing - review and editing; Jakob Nilsson, Resources, Data curation, Formal analysis, Supervision, Funding acquisition, Investigation, Writing - original draft, Project administration, Writing - review and editing

Author ORCIDsXinru Wang  <https://orcid.org/0000-0001-5994-707X>Isha Nasa  <http://orcid.org/0000-0001-7699-795X>Gang Zhang  <http://orcid.org/0000-0001-7697-7203>Arminja N Kettenbach  <https://orcid.org/0000-0003-3979-4576>Jakob Nilsson  <https://orcid.org/0000-0003-4100-1125>Rebecca Page  <https://orcid.org/0000-0002-4645-1232>**Decision letter and Author response**Decision letter <https://doi.org/10.7554/eLife.55966.sa1>Author response <https://doi.org/10.7554/eLife.55966.sa2>**Additional files****Supplementary files**

- Transparent reporting form

Data availability

All NMR chemical shifts have been deposited in the BioMagResBank (BMRB 27913). Atomic coordinates and structure factors have been deposited in the Protein Data Bank (6OYL, 6VRO). The mass spectrometry proteomics data have been deposited to the ProteomeXchange Consortium (Vizcaíno et al., 2014) through the PRIDE partner repository (PXD013886).

The following datasets were generated:

Author(s)	Year	Dataset title	Dataset URL	Database and Identifier
Page R, Peti W, Wang X	2020	The Structure of the PP2A B56 subunit KIF4A complex	http://www.rcsb.org/structure/6OYL	RCSB Protein Data Bank, 6OYL
Page R, Peti W, Wang X	2020	The structure of the PP2A B56 subunit AIM1 complex	http://www.rcsb.org/structure/6VRO	RCSB Protein Data Bank, 6VRO
Kettenbach AN	2020	Mass spectrometry proteomics data	http://proteomecentral.proteomexchange.org/cgi/GetDataset?ID=PXD013886	ProteomeXchange, PXD013886
Wang X, Garvanska D, Kettenbach A, Peti W, Nilsson J, Page R	2020	Backbone 1H, 13C, and 15N Chemical Shift Assignments for the C-terminal Fragment of a Kinesin KIF4A Variant	http://bmr.b.wisc.edu/data_library/summary/index.php?bmrblid=27913	Biological Magnetic Resonance Data Bank, 27913

The following previously published dataset was used:

Author(s)	Year	Dataset title	Dataset URL	Database and Identifier
Kettenbach A	2019	A dynamic charge:charge interaction modulates PP2A:B56 interactions	https://massive.ucsd.edu/ProteoSAFe/data-set.jsp?task=9a6d3fdf30db4f6db9243-d3d3cc07058	MassIVE, MSV000083785

References

- Adams PD, Afonine PV, Bunkóczi G, Chen VB, Davis IW, Echols N, Headd JJ, Hung LW, Kapral GJ, Grosse-Kunstleve RW, McCoy AJ, Moriarty NW, Oeffner R, Read RJ, Richardson DC, Richardson JS, Terwilliger TC, Zwart PH. 2010. PHENIX: a comprehensive Python-based system for macromolecular structure solution. *Acta Crystallographica Section D Biological Crystallography* **66**:213–221. DOI: <https://doi.org/10.1107/S0907444909052925>, PMID: 20124702
- Ashkenazy H, Abadi S, Martz E, Chay O, Mayrose I, Pupko T, Ben-Tal N. 2016. ConSurf 2016: an improved methodology to estimate and visualize evolutionary conservation in macromolecules. *Nucleic Acids Research* **44**:W344–W350. DOI: <https://doi.org/10.1093/nar/gkw408>, PMID: 27166375

- Bajaj R**, Bollen M, Peti W, Page R. 2018. KNL1 binding to PP1 and microtubules is mutually exclusive. *Structure* **26**:1327–1336. DOI: <https://doi.org/10.1016/j.str.2018.06.013>, PMID: 30100357
- Bastos RN**, Cundell MJ, Barr FA. 2014. KIF4A and PP2A-B56 form a spatially restricted feedback loop opposing aurora B at the anaphase central spindle. *Journal of Cell Biology* **207**:683–693. DOI: <https://doi.org/10.1083/jcb.201409129>, PMID: 25512391
- Berlow RB**, Dyson HJ, Wright PE. 2015. Functional advantages of dynamic protein disorder. *FEBS Letters* **589**:2433–2440. DOI: <https://doi.org/10.1016/j.febslet.2015.06.003>
- Bertran MT**, Mouilleron S, Zhou Y, Bajaj R, Uliana F, Kumar GS, van Drogen A, Lee R, Banerjee JJ, Hauri S, O'Reilly N, Gstaiger M, Page R, Peti W, Tapon N. 2019. ASPP proteins discriminate between PP1 catalytic subunits through their SH3 domain and the PP1 C-tail. *Nature Communications* **10**:771. DOI: <https://doi.org/10.1038/s41467-019-08686-0>, PMID: 30770806
- Bialojan C**, Takai A. 1988. Inhibitory effect of a marine-sponge toxin, okadaic acid, on protein phosphatases. specificity and kinetics. *Biochemical Journal* **256**:283–290. DOI: <https://doi.org/10.1042/bj2560283>, PMID: 2851982
- Borgia A**, Borgia MB, Bugge K, Kissling VM, Heidarsson PO, Fernandes CB, Sottini A, Soranno A, Buholzer KJ, Nettels D, Kragelund BB, Best RB, Schuler B. 2018. Extreme disorder in an ultrahigh-affinity protein complex. *Nature* **555**:61–66. DOI: <https://doi.org/10.1038/nature25762>
- Brown CJ**, Takayama S, Campen AM, Vise P, Marshall TW, Oldfield CJ, Williams CJ, Dunker AK. 2002. Evolutionary rate heterogeneity in proteins with long disordered regions. *Journal of Molecular Evolution* **55**:104–110. DOI: <https://doi.org/10.1007/s00239-001-2309-6>, PMID: 12165847
- Cho US**, Xu W. 2007. Crystal structure of a protein phosphatase 2A heterotrimeric holoenzyme. *Nature* **445**:53–57. DOI: <https://doi.org/10.1038/nature05351>, PMID: 17086192
- Choy MS**, Hieke M, Kumar GS, Lewis GR, Gonzalez-DeWhitt KR, Kessler RP, Stein BJ, Hessenberger M, Nairn AC, Peti W, Page R. 2014. Understanding the antagonism of retinoblastoma protein dephosphorylation by PNUITS provides insights into the PP1 regulatory code. *PNAS* **111**:4097–4102. DOI: <https://doi.org/10.1073/pnas.1317395111>, PMID: 24591642
- Cundell MJ**, Hutter LH, Nunes Bastos R, Poser E, Holder J, Mohammed S, Novak B, Barr FA. 2016. A PP2A-B56 recognition signal controls substrate dephosphorylation kinetics during mitotic exit. *Journal of Cell Biology* **214**:539–554. DOI: <https://doi.org/10.1083/jcb.201606033>
- Dyson HJ**, Wright PE. 2002. Coupling of folding and binding for unstructured proteins. *Current Opinion in Structural Biology* **12**:54–60. DOI: [https://doi.org/10.1016/S0959-440X\(02\)00289-0](https://doi.org/10.1016/S0959-440X(02)00289-0), PMID: 11839490
- Eichhorn PJA**, Creighton MP, Bernards R. 2009. Protein phosphatase 2A regulatory subunits and Cancer. *Biochimica Et Biophysica Acta (BBA) - Reviews on Cancer* **1795**:1–15. DOI: <https://doi.org/10.1016/j.bbcan.2008.05.005>
- Elias JE**, Gygi SP. 2007. Target-decoy search strategy for increased confidence in large-scale protein identifications by mass spectrometry. *Nature Methods* **4**:207–214. DOI: <https://doi.org/10.1038/nmeth1019>, PMID: 17327847
- Emsley P**, Cowtan K. 2004. Coot: model-building tools for molecular graphics. *Acta Crystallographica. Section D, Biological Crystallography* **60**:2126–2132. DOI: <https://doi.org/10.1107/S0907444904019158>, PMID: 15572765
- Eng JK**, Jahan TA, Hoopmann MR. 2013. Comet: an open-source MS/MS sequence database search tool. *Proteomics* **13**:22–24. DOI: <https://doi.org/10.1002/pmic.201200439>, PMID: 23148064
- Evans PR**, Murshudov GN. 2013. How good are my data and what is the resolution? *Acta Crystallographica Section D Biological Crystallography* **69**:1204–1214. DOI: <https://doi.org/10.1107/S0907444913000061>, PMID: 23793146
- French S**, Wilson K. 1978. On the treatment of negative intensity observations. *Acta Crystallographica Section A* **34**:517–525. DOI: <https://doi.org/10.1107/S0567739478001114>
- Grigoriu S**, Bond R, Cossio P, Chen JA, Ly N, Hummer G, Page R, Cyert MS, Peti W. 2013. The molecular mechanism of substrate engagement and immunosuppressant inhibition of calcineurin. *PLOS Biology* **11**:e1001492. DOI: <https://doi.org/10.1371/journal.pbio.1001492>, PMID: 23468591
- Habchi J**, Tompa P, Longhi S, Uversky VN. 2014. Introducing protein intrinsic disorder. *Chemical Reviews* **114**:6561–6588. DOI: <https://doi.org/10.1021/cr400514h>, PMID: 24739139
- Hein JB**, Nilsson J. 2014. Stable MCC binding to the APC/C is required for a functional spindle assembly checkpoint. *EMBO Reports* **15**:264–272. DOI: <https://doi.org/10.1002/embr.201337496>, PMID: 24464857
- Hendus-Altenburger R**, Wang X, Sjøgaard-Frich LM, Pedraz-Cuesta E, Sheftic SR, Bendsøe AH, Page R, Kragelund BB, Pedersen SF, Peti W. 2019. Molecular basis for the binding and selective dephosphorylation of Na⁺/H⁺ exchanger 1 by calcineurin. *Nature Communications* **10**:3489. DOI: <https://doi.org/10.1038/s41467-019-11391-7>, PMID: 31375679
- Hertz EPT**, Kruse T, Davey NE, López-Méndez B, Sigurdsson JO, Montoya G, Olsen JV, Nilsson J. 2016. A conserved motif provides binding specificity to the PP2A-B56 phosphatase. *Molecular Cell* **63**:686–695. DOI: <https://doi.org/10.1016/j.molcel.2016.06.024>, PMID: 27453045
- Kabsch W**. 2010. XDS. *Acta Crystallographica. Section D, Biological Crystallography* **66**:125–132. DOI: <https://doi.org/10.1107/S0907444909047337>, PMID: 20124692
- Kruse T**, Zhang G, Larsen MS, Lischetti T, Streicher W, Kragh Nielsen T, Bjørn SP, Nilsson J. 2013. Direct binding between BubR1 and B56-PP2A phosphatase complexes regulate mitotic progression. *Journal of Cell Science* **126**:1086–1092. DOI: <https://doi.org/10.1242/jcs.122481>, PMID: 23345399

- Kumar GS**, Gokhan E, De Munter S, Bollen M, Vagnarelli P, Peti W, Page R. 2016. The Ki-67 and RepoMan mitotic phosphatases assemble via an identical, yet novel mechanism. *eLife* **5**:e16539. DOI: <https://doi.org/10.7554/eLife.16539>, PMID: 27572260
- Lange A**, Mills RE, Lange CJ, Stewart M, Devine SE, Corbett AH. 2007. Classical nuclear localization signals: definition, function, and interaction with importin alpha. *Journal of Biological Chemistry* **282**:5101–5105. DOI: <https://doi.org/10.1074/jbc.R600026200>, PMID: 17170104
- Lee B**, Richards FM. 1971. The interpretation of protein structures: estimation of static accessibility. *Journal of Molecular Biology* **55**:379–400. DOI: [https://doi.org/10.1016/0022-2836\(71\)90324-X](https://doi.org/10.1016/0022-2836(71)90324-X), PMID: 5551392
- Li H**, Zhang L, Rao A, Harrison SC, Hogan PG. 2007. Structure of calcineurin in complex with PVIVIT peptide: portrait of a low-affinity signalling interaction. *Journal of Molecular Biology* **369**:1296–1306. DOI: <https://doi.org/10.1016/j.jmb.2007.04.032>, PMID: 17498738
- Luo L**, Xue J, Kwan A, Gamsjaeger R, Wielens J, von Kleist L, Cubeddu L, Guo Z, Stow JL, Parker MW, Mackay JP, Robinson PJ. 2016. The binding of syndapin SH3 domain to dynamin Proline-rich domain involves short and long distance elements. *Journal of Biological Chemistry* **291**:9411–9424. DOI: <https://doi.org/10.1074/jbc.M115.703108>, PMID: 26893375
- Madeira F**, Park YM, Lee J, Buso N, Gur T, Madhusoodanan N, Basutkar P, Tivey ARN, Potter SC, Finn RD, Lopez R. 2019. The EMBL-EBI search and sequence analysis tools APIs in 2019. *Nucleic Acids Research* **47**:W636–W641. DOI: <https://doi.org/10.1093/nar/gkz268>, PMID: 30976793
- Mazumdar M**, Sundareshan S, Misteli T. 2004. Human chromokinesin KIF4A functions in chromosome condensation and segregation. *Journal of Cell Biology* **166**:613–620. DOI: <https://doi.org/10.1083/jcb.200401142>, PMID: 15326200
- Nasa I**, Rusin SF, Kettenbach AN, Moorhead GB. 2018. Aurora B opposes PP1 function in mitosis by phosphorylating the conserved PP1-binding RVxF motif in PP1 regulatory proteins. *Science Signaling* **11**: eaa18669. DOI: <https://doi.org/10.1126/scisignal.aai8669>, PMID: 29764992
- Nilsson J**. 2019. Protein phosphatases in the regulation of mitosis. *Journal of Cell Biology* **218**:395–409. DOI: <https://doi.org/10.1083/jcb.201809138>, PMID: 30446607
- Pallas DC**, Shahrik LK, Martin BL, Jaspers S, Miller TB, Brautigam DL, Roberts TM. 1990. Polyoma small and middle T antigens and SV40 small t antigen form stable complexes with protein phosphatase 2A. *Cell* **60**:167–176. DOI: [https://doi.org/10.1016/0092-8674\(90\)90726-U](https://doi.org/10.1016/0092-8674(90)90726-U), PMID: 2153055
- Peti W**, Nairn AC, Page R. 2013. Structural basis for protein phosphatase 1 regulation and specificity. *FEBS Journal* **280**:596–611. DOI: <https://doi.org/10.1111/j.1742-4658.2012.08509.x>, PMID: 22284538
- Peti W**, Page R. 2007. Strategies to maximize heterologous protein expression in *Escherichia coli* with minimal cost. *Protein Expression and Purification* **51**:1–10. DOI: <https://doi.org/10.1016/j.pep.2006.06.024>, PMID: 16904906
- Petrone A**, Adamo ME, Cheng C, Kettenbach AN. 2016. Identification of candidate Cyclin-dependent kinase 1 (Cdk1) Substrates in mitosis by quantitative phosphoproteomics. *Molecular & Cellular Proteomics* **15**:2448–2461. DOI: <https://doi.org/10.1074/mcp.M116.059394>
- Poser E**, Caous R, Gruneberg U, Barr FA. 2019. Aurora A promotes chromosome congression by activating the condensin-dependent pool of KIF4A. *The Journal of Cell Biology* **219**:e201905194. DOI: <https://doi.org/10.1083/jcb.201905194>, PMID: 31881080
- Reid MA**, Wang WI, Rosales KR, Welliver MX, Pan M, Kong M. 2013. The B55 α subunit of PP2A drives a p53-dependent metabolic adaptation to glutamine deprivation. *Molecular Cell* **50**:200–211. DOI: <https://doi.org/10.1016/j.molcel.2013.02.008>, PMID: 23499005
- Reynhout S**, Janssens V. 2019. Physiologic functions of PP2A: lessons from genetically modified mice. *Biochimica Et Biophysica Acta (BBA) - Molecular Cell Research* **1866**:31–50. DOI: <https://doi.org/10.1016/j.bbamcr.2018.07.010>
- Ruvolo PP**. 2016. The broken "Off" switch in cancer signaling: PP2A as a regulator of tumorigenesis, drug resistance, and immune surveillance. *BBA Clinical* **6**:87–99. DOI: <https://doi.org/10.1016/j.bbaci.2016.08.002>, PMID: 27556014
- Scheuermann TH**, Brautigam CA. 2015. High-precision, automated integration of multiple isothermal titration calorimetric thermograms: new features of NITPIC. *Methods* **76**:87–98. DOI: <https://doi.org/10.1016/j.ymeth.2014.11.024>, PMID: 25524420
- Schwanhäusser B**, Busse D, Li N, Dittmar G, Schuchhardt J, Wolf J, Chen W, Selbach M. 2011. Global quantification of mammalian gene expression control. *Nature* **473**:337–342. DOI: <https://doi.org/10.1038/nature10098>, PMID: 21593866
- Sharma R**, Raduly Z, Miskei M, Fuxreiter M. 2015. Fuzzy complexes: specific binding without complete folding. *FEBS Letters* **589**:2533–2542. DOI: <https://doi.org/10.1016/j.febslet.2015.07.022>, PMID: 26226339
- Tompa P**, Davey NE, Gibson TJ, Babu MM. 2014. A million peptide motifs for the molecular biologist. *Molecular Cell* **55**:161–169. DOI: <https://doi.org/10.1016/j.molcel.2014.05.032>, PMID: 25038412
- Tyanova S**, Temu T, Sinitcyn P, Carlson A, Hein MY, Geiger T, Mann M, Cox J. 2016. The perseus computational platform for comprehensive analysis of (prote)omics data. *Nature Methods* **13**:731–740. DOI: <https://doi.org/10.1038/nmeth.3901>, PMID: 27348712
- Valot B**, Langella O, Nano E, Zivy M. 2011. MassChroQ: a versatile tool for mass spectrometry quantification. *Proteomics* **11**:3572–3577. DOI: <https://doi.org/10.1002/pmic.201100120>, PMID: 21751374
- Van Roey K**, Davey NE. 2015. Motif co-regulation and co-operativity are common mechanisms in transcriptional, post-transcriptional and post-translational regulation. *Cell Communication and Signaling* **13**:45. DOI: <https://doi.org/10.1186/s12964-015-0123-9>, PMID: 26626130

- Vizcaíno JA**, Deutsch EW, Wang R, Csordas A, Reisinger F, Rios D, Dienes JA, Sun Z, Farrah T, Bandeira N, Binz PA, Xenarios I, Eisenacher M, Mayer G, Gatto L, Campos A, Chalkley RJ, Kraus HJ, Albar JP, Martinez-Bartolomé S, et al. 2014. ProteomeXchange provides globally coordinated proteomics data submission and dissemination. *Nature Biotechnology* **32**:223–226. DOI: <https://doi.org/10.1038/nbt.2839>, PMID: 24727771
- Wandke C**, Barisic M, Sigl R, Rauch V, Wolf F, Amaro AC, Tan CH, Pereira AJ, Kutay U, Maiato H, Meraldi P, Geley S. 2012. Human chromokinesins promote chromosome congression and spindle microtubule dynamics during mitosis. *The Journal of Cell Biology* **198**:847–863. DOI: <https://doi.org/10.1083/jcb.201110060>, PMID: 22945934
- Wang X**, Bajaj R, Bollen M, Peti W, Page R. 2016. Expanding the PP2A interactome by defining a B56-Specific SLiM. *Structure* **24**:2174–2181. DOI: <https://doi.org/10.1016/j.str.2016.09.010>, PMID: 27998540
- Williams AP**, Garner EF, Waters AM, Stafman LL, Aye JM, Markert H, Stewart JE, Beierle EA. 2019. Investigation of PP2A and its endogenous inhibitors in neuroblastoma cell survival and tumor growth. *Translational Oncology* **12**:84–95. DOI: <https://doi.org/10.1016/j.tranon.2018.09.011>, PMID: 30286326
- Wlodarchak N**, Xing Y. 2016. PP2A as a master regulator of the cell cycle. *Critical Reviews in Biochemistry and Molecular Biology* **51**:162–184. DOI: <https://doi.org/10.3109/10409238.2016.1143913>, PMID: 26906453
- Wu CG**, Chen H, Guo F, Yadav VK, McIlwain SJ, Rowse M, Choudhary A, Lin Z, Li Y, Gu T, Zheng A, Xu Q, Lee W, Resch E, Johnson B, Day J, Ge Y, Ong IM, Burkard ME, Ivarsson Y, et al. 2017. PP2A-B' holoenzyme substrate recognition, regulation and role in cytokinesis. *Cell Discovery* **3**:17027. DOI: <https://doi.org/10.1038/celldisc.2017.27>, PMID: 28884018
- Xu Y**, Xing Y, Chen Y, Chao Y, Lin Z, Fan E, Yu JW, Strack S, Jeffrey PD, Shi Y. 2006. Structure of the protein phosphatase 2A holoenzyme. *Cell* **127**:1239–1251. DOI: <https://doi.org/10.1016/j.cell.2006.11.033>, PMID: 17174897
- Xu Y**, Chen Y, Zhang P, Jeffrey PD, Shi Y. 2008. Structure of a protein phosphatase 2A holoenzyme: insights into B55-mediated tau dephosphorylation. *Molecular Cell* **31**:873–885. DOI: <https://doi.org/10.1016/j.molcel.2008.08.006>, PMID: 18922469
- Zhao H**, Piszczek G, Schuck P. 2015. SEDPHAT—a platform for global ITC analysis and global multi-method analysis of molecular interactions. *Methods* **76**:137–148. DOI: <https://doi.org/10.1016/j.ymeth.2014.11.012>, PMID: 25477226