
Figures and figure supplements

Global distribution maps of the leishmaniasis

David M Pigott, et al.

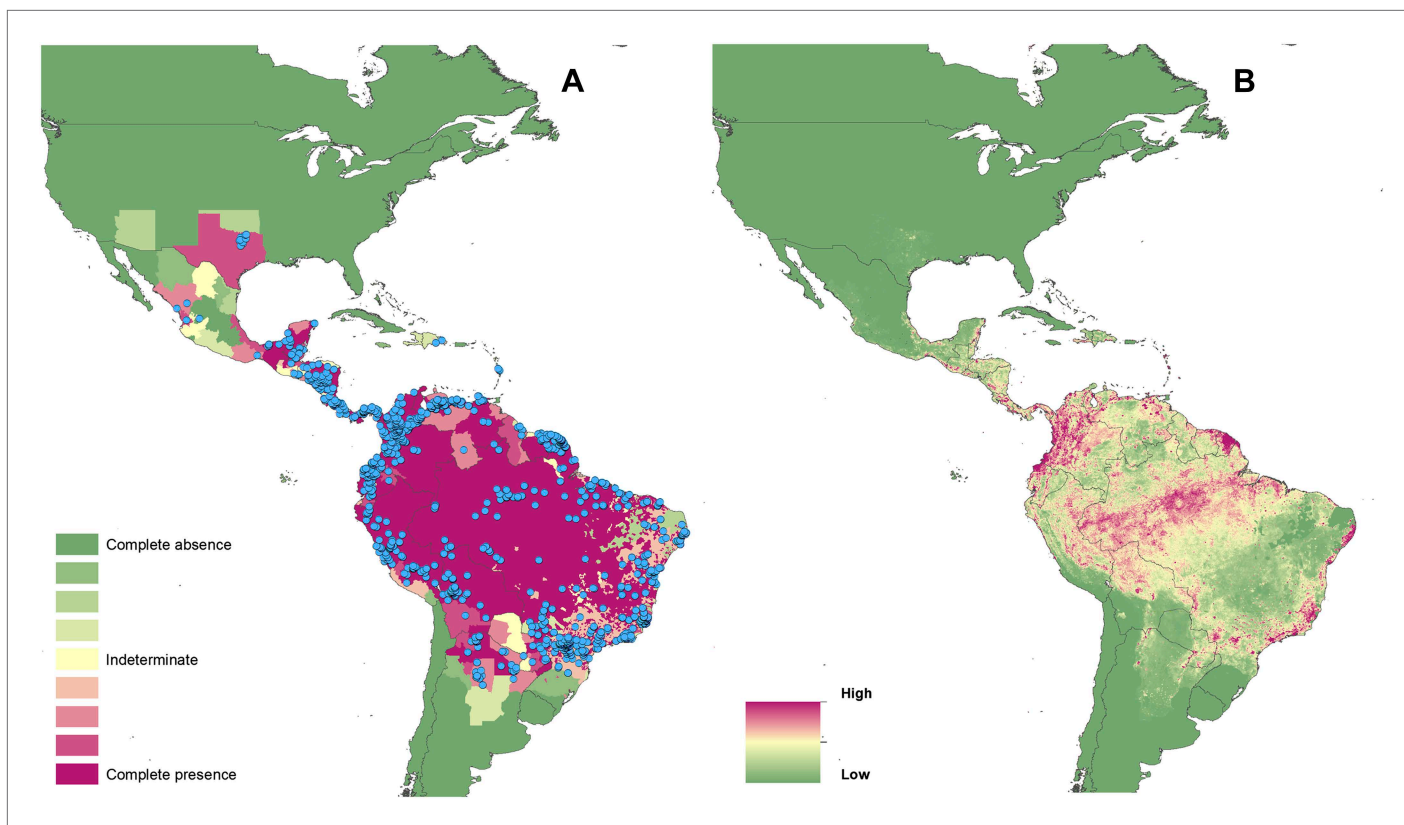


Figure 1. Reported and predicted distribution of cutaneous leishmaniasis in the New World. **(A)** Evidence consensus for presence of the disease ranging from green (complete consensus on the absence: -100%) to purple (complete consensus on the presence of disease: $+100\%$). The blue spots indicate occurrence points or centroids of occurrences within small polygons. **(B)** Predicted risk of cutaneous leishmaniasis from green (low probability of presence) to purple (high probability of presence).

DOI: [10.7554/eLife.02851.003](https://doi.org/10.7554/eLife.02851.003)

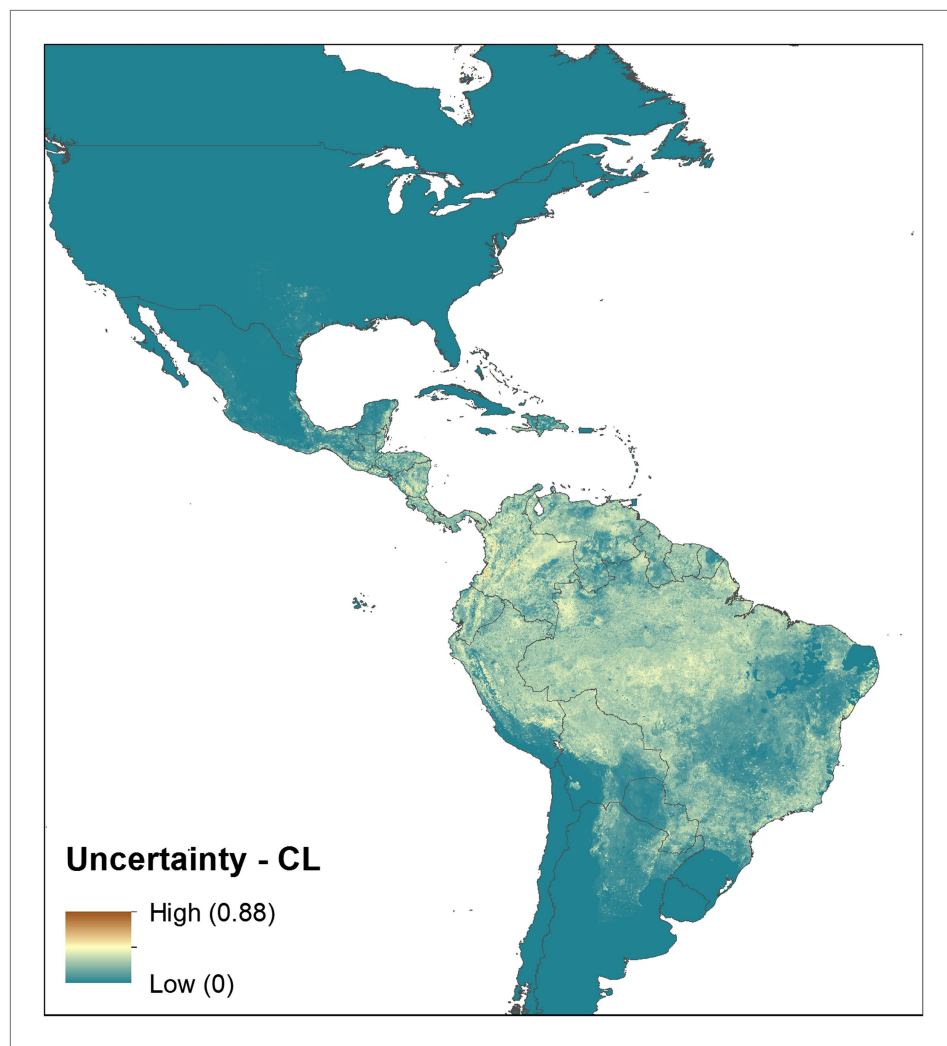


Figure 1—figure supplement 1. Uncertainty associated with predictions in **Figure 1B**.

DOI: [10.7554/eLife.02851.004](https://doi.org/10.7554/eLife.02851.004)

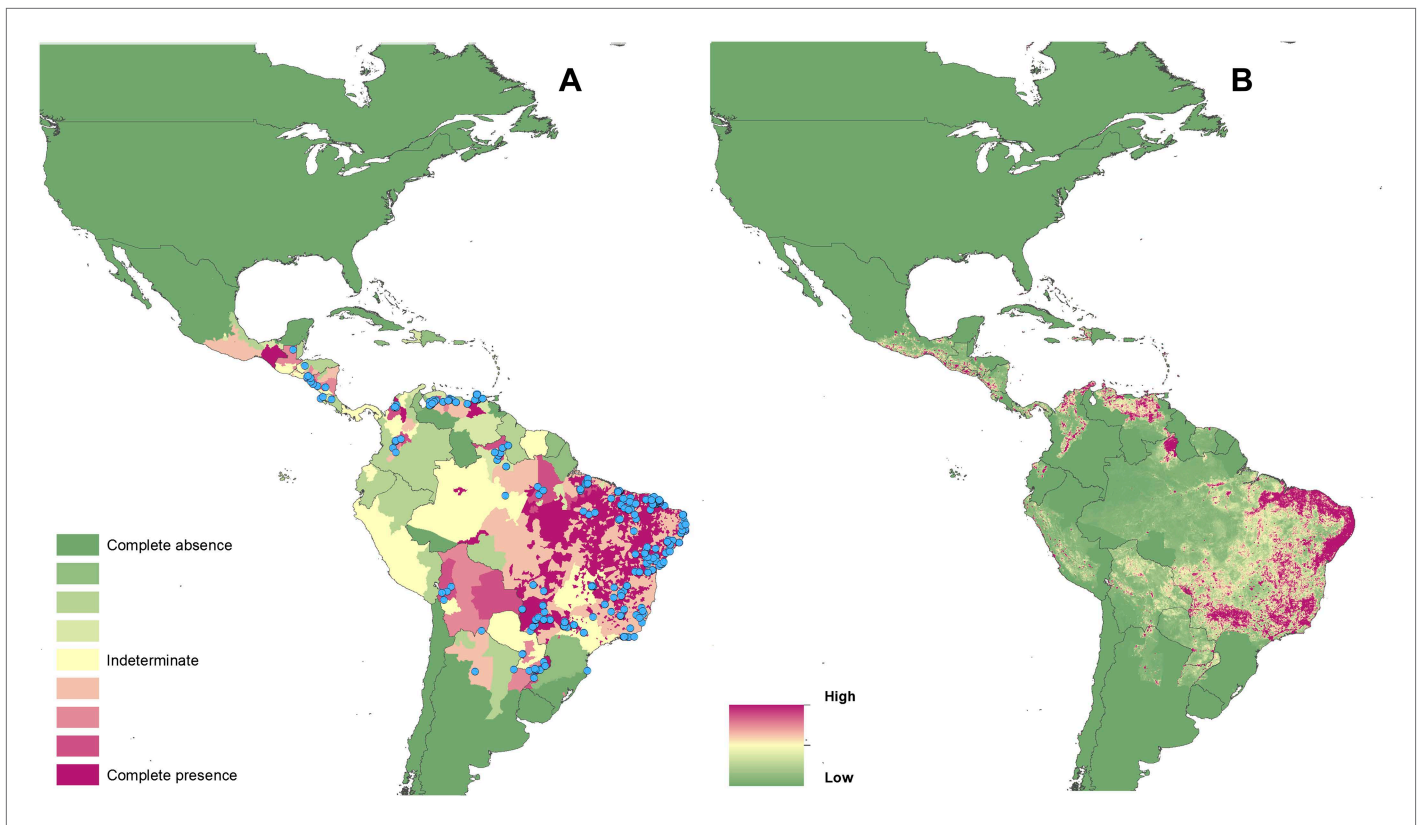


Figure 2. Reported and predicted distribution of visceral leishmaniasis in the New World. **(A)** Evidence consensus for presence of the disease ranging from green (complete consensus on the absence: -100%) to purple (complete consensus on the presence of disease: $+100\%$). The blue spots indicate occurrence points or centroids of occurrences within small polygons. **(B)** Predicted risk of visceral leishmaniasis from green (low probability of presence) to purple (high probability of presence).

DOI: [10.7554/eLife.02851.005](https://doi.org/10.7554/eLife.02851.005)

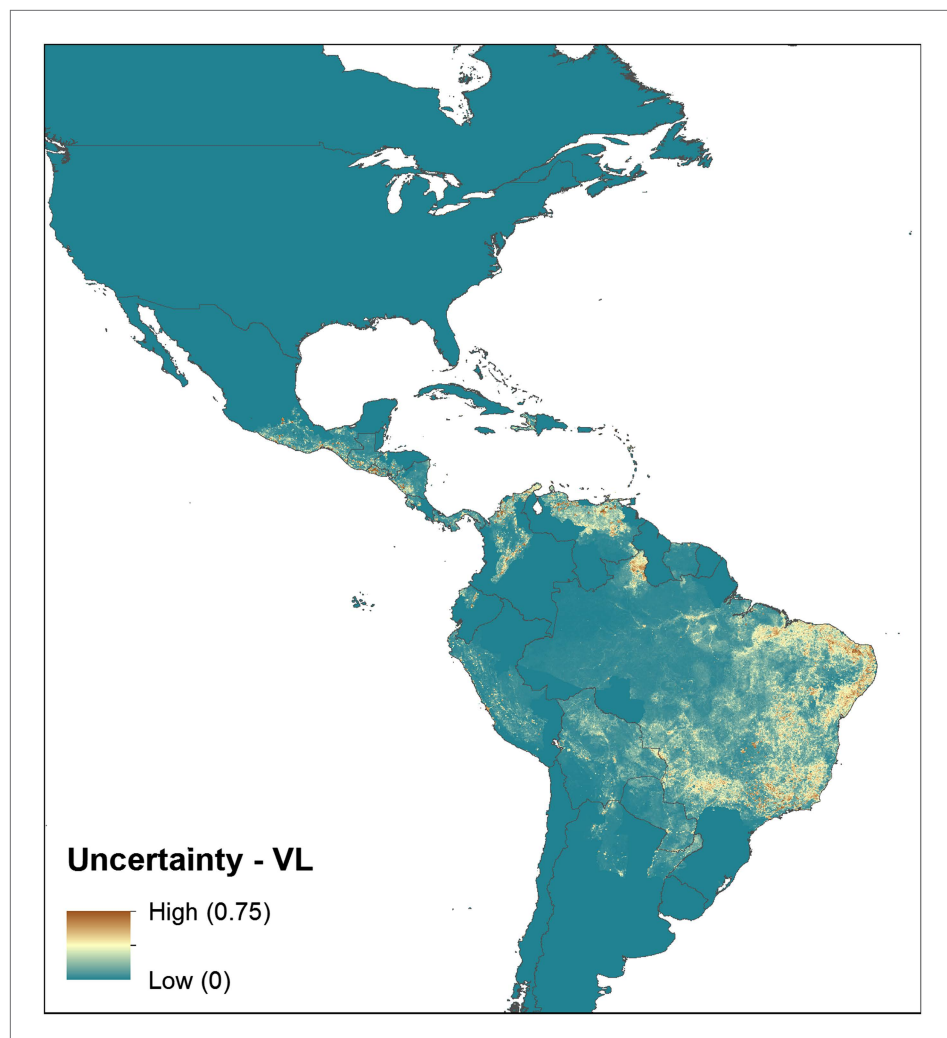


Figure 2—figure supplement 1. Uncertainty associated with predictions in **Figure 2B**.

DOI: [10.7554/eLife.02851.006](https://doi.org/10.7554/eLife.02851.006)

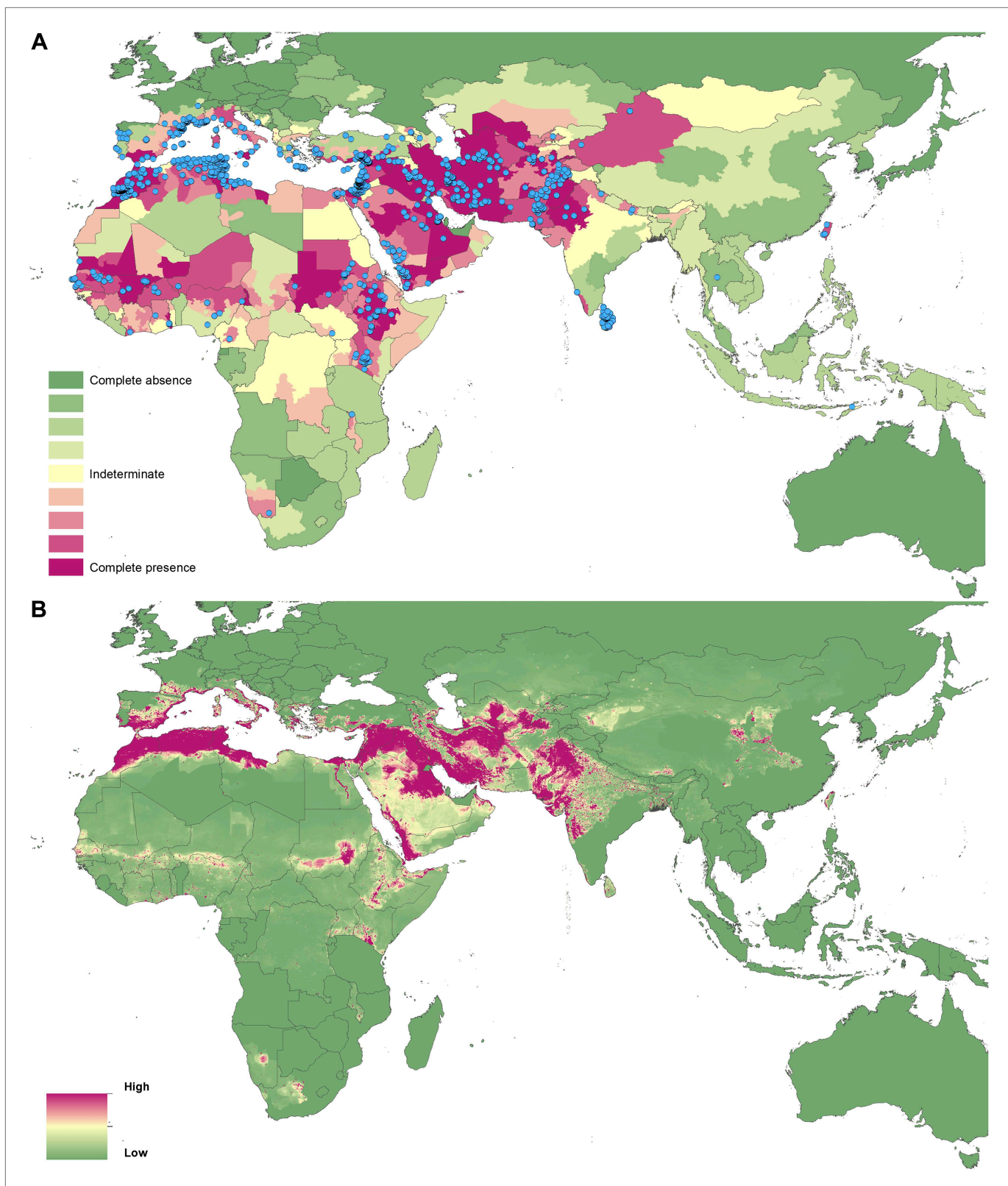


Figure 3. Reported and predicted distribution of cutaneous leishmaniasis in the Old World. **(A)** Evidence consensus for presence of the disease ranging from green (complete consensus on the absence: -100%) to purple (complete consensus on the presence of disease: $+100\%$). The blue spots indicate occurrence points or centroids of occurrences within small polygons. **(B)** Predicted risk of cutaneous leishmaniasis from green (low probability of presence) to purple (high probability of presence).

DOI: [10.7554/eLife.02851.007](https://doi.org/10.7554/eLife.02851.007)

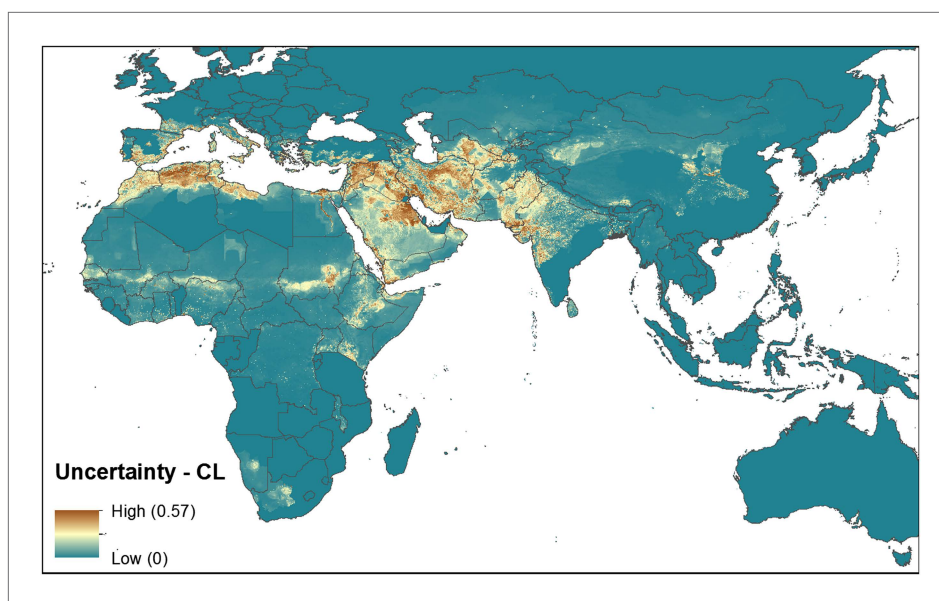


Figure 3—figure supplement 1. Uncertainty associated with predictions in **Figure 3B**.

DOI: [10.7554/eLife.02851.008](https://doi.org/10.7554/eLife.02851.008)

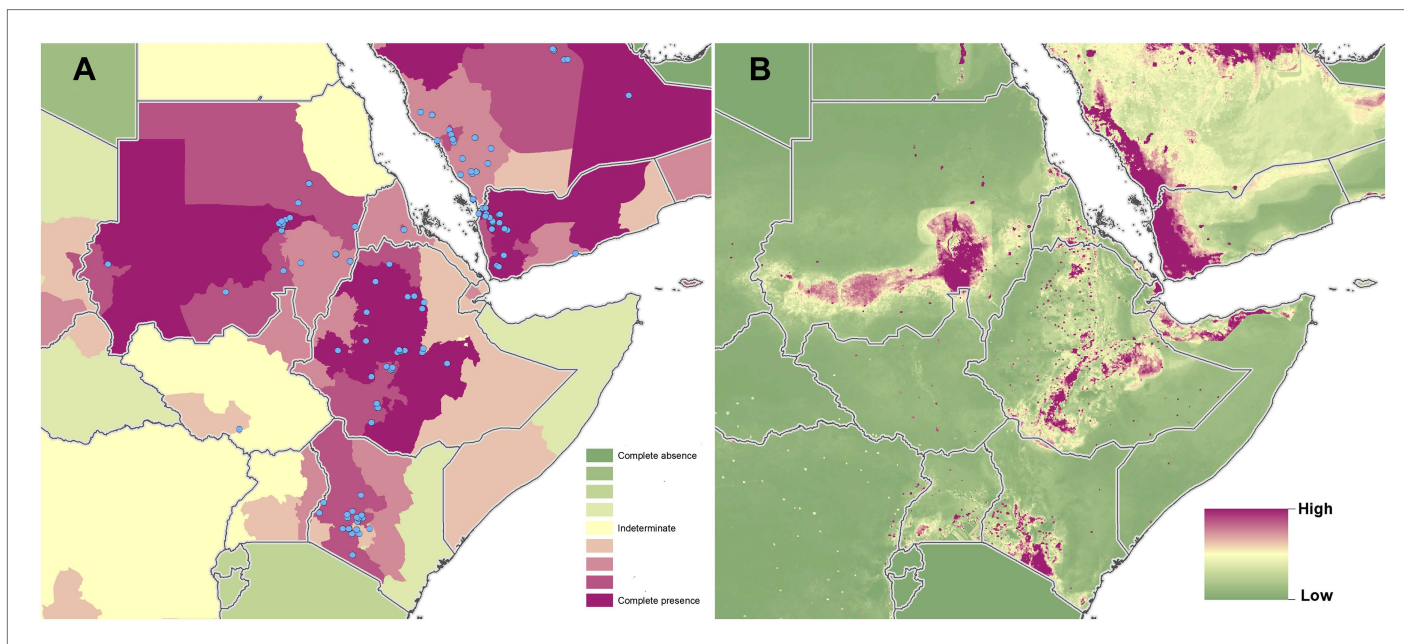


Figure 3—figure supplement 2. Reported and predicted distribution of cutaneous leishmaniasis in northeast Africa.

DOI: [10.7554/eLife.02851.009](https://doi.org/10.7554/eLife.02851.009)

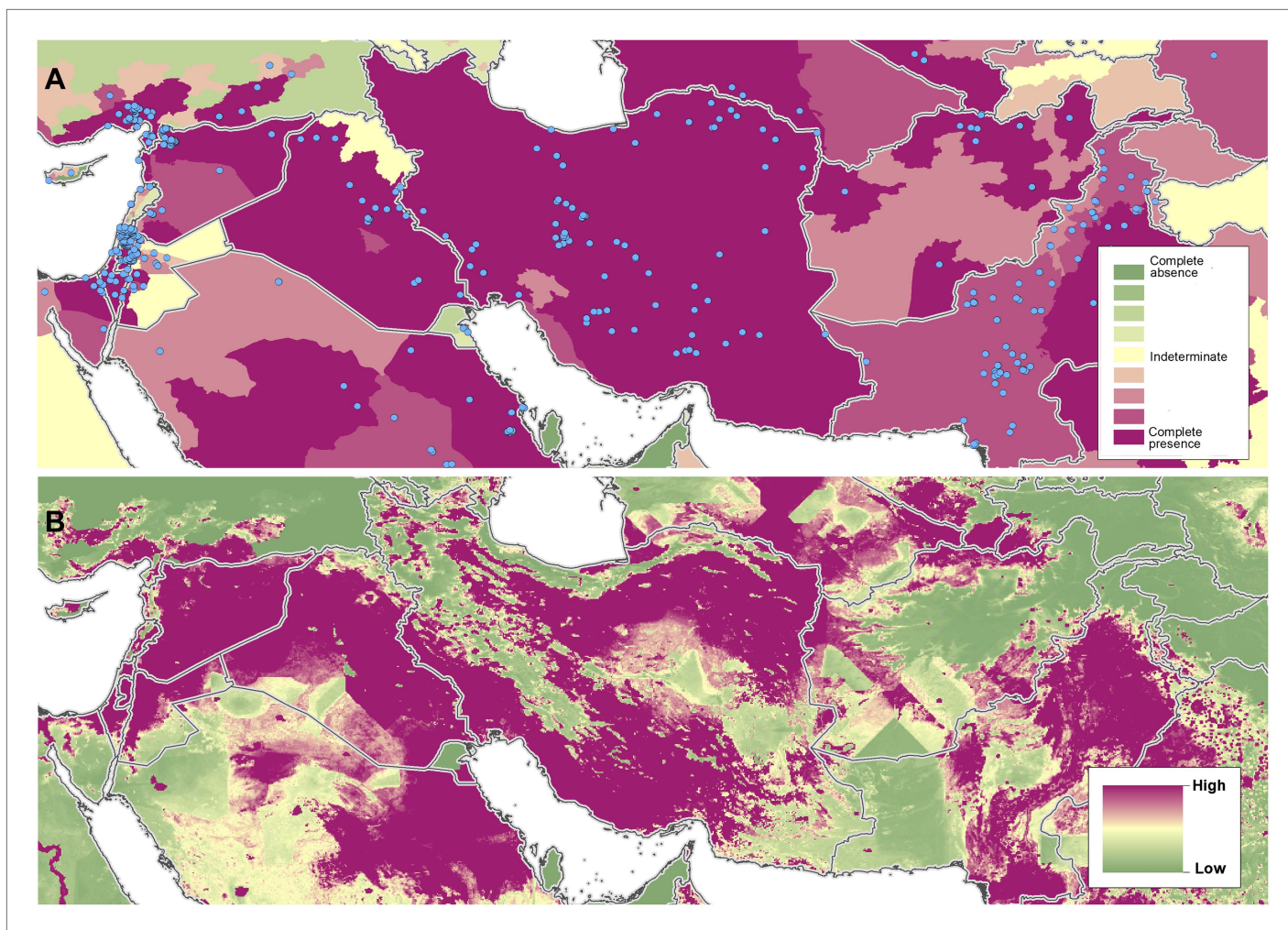


Figure 3—figure supplement 3. Reported and predicted distribution of cutaneous leishmaniasis across the Near East, including Syria, Iran and Afghanistan.

DOI: [10.7554/eLife.02851.010](https://doi.org/10.7554/eLife.02851.010)

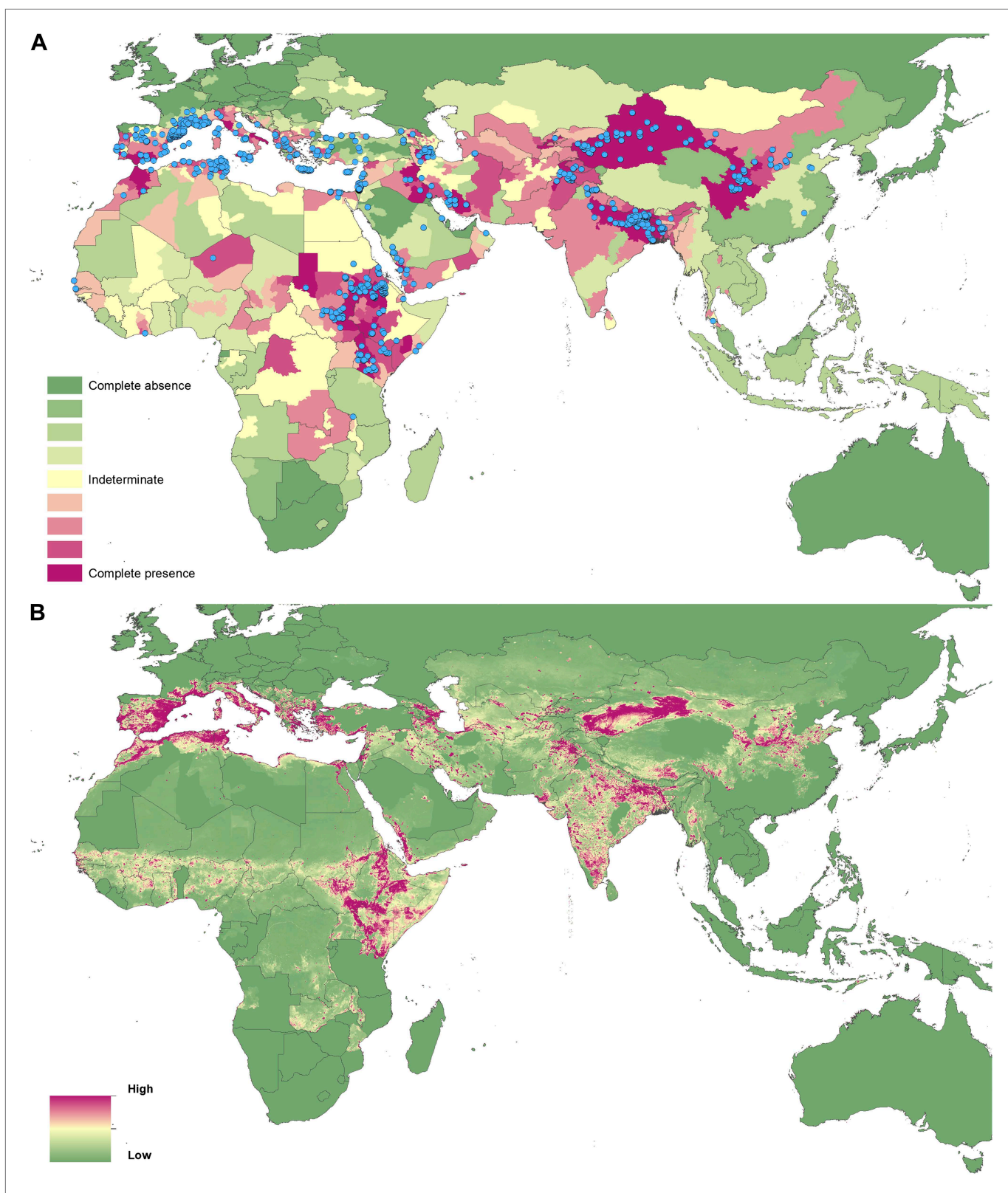


Figure 4. Reported and predicted distribution of visceral leishmaniasis in the Old World. **(A)** Evidence consensus for presence of the disease ranging from green (complete consensus on the absence: -100%) to purple (complete consensus on the presence of disease: $+100\%$). The blue spots indicate occurrence points or centroids of occurrences within small polygons. **(B)** Predicted risk of visceral leishmaniasis from green (low probability of presence) to purple (high probability of presence).

DOI: [10.7554/eLife.02851.011](https://doi.org/10.7554/eLife.02851.011)

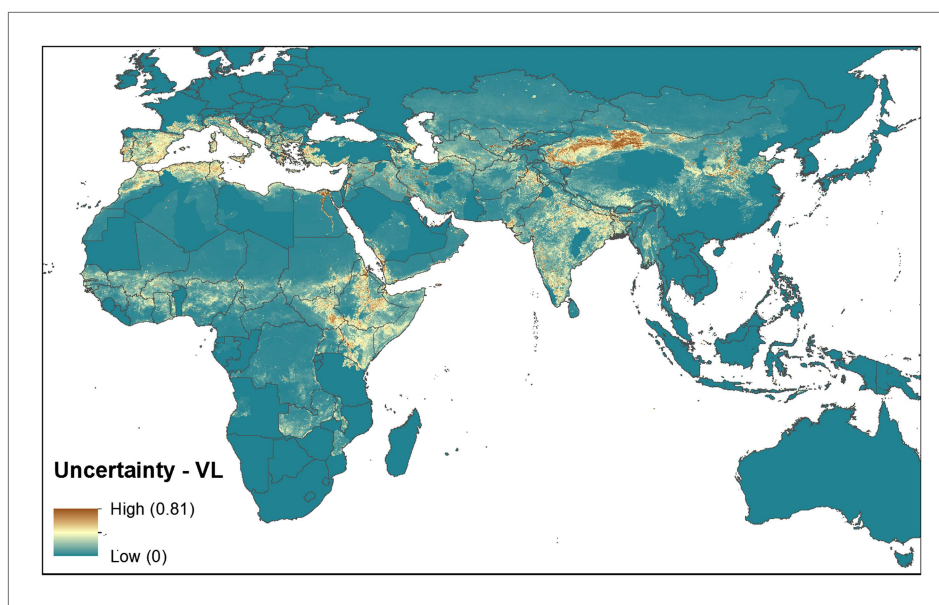


Figure 4—figure supplement 1. Uncertainty associated with predictions in **Figure 4B**.

DOI: [10.7554/eLife.02851.012](https://doi.org/10.7554/eLife.02851.012)

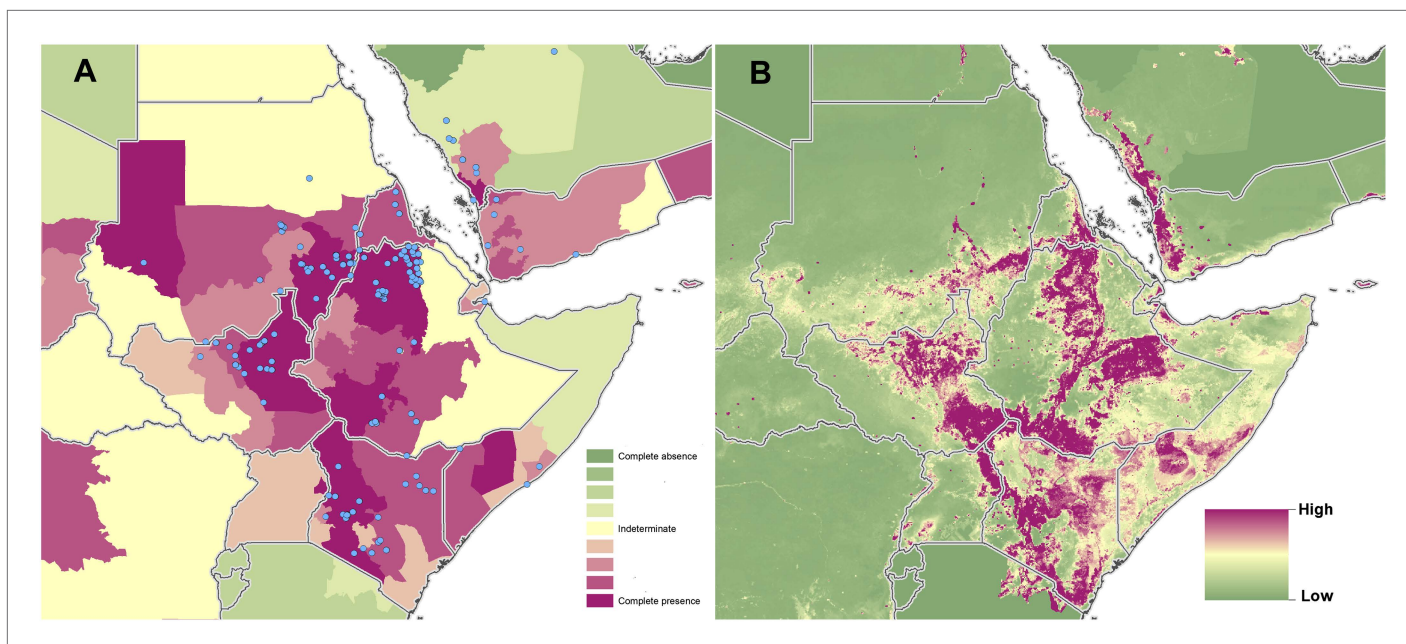


Figure 4—figure supplement 2. Reported and predicted distribution of visceral leishmaniasis in northeast Africa.

DOI: [10.7554/eLife.02851.013](https://doi.org/10.7554/eLife.02851.013)

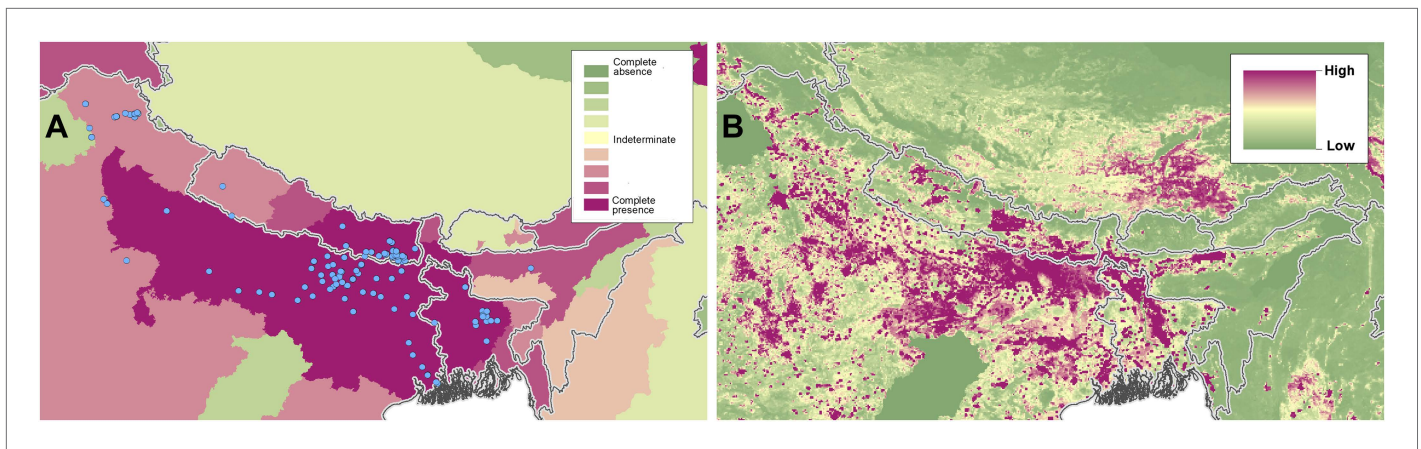


Figure 4—figure supplement 3. Reported and predicted distribution of visceral leishmaniasis in the Indian subcontinent.

DOI: [10.7554/eLife.02851.014](https://doi.org/10.7554/eLife.02851.014)

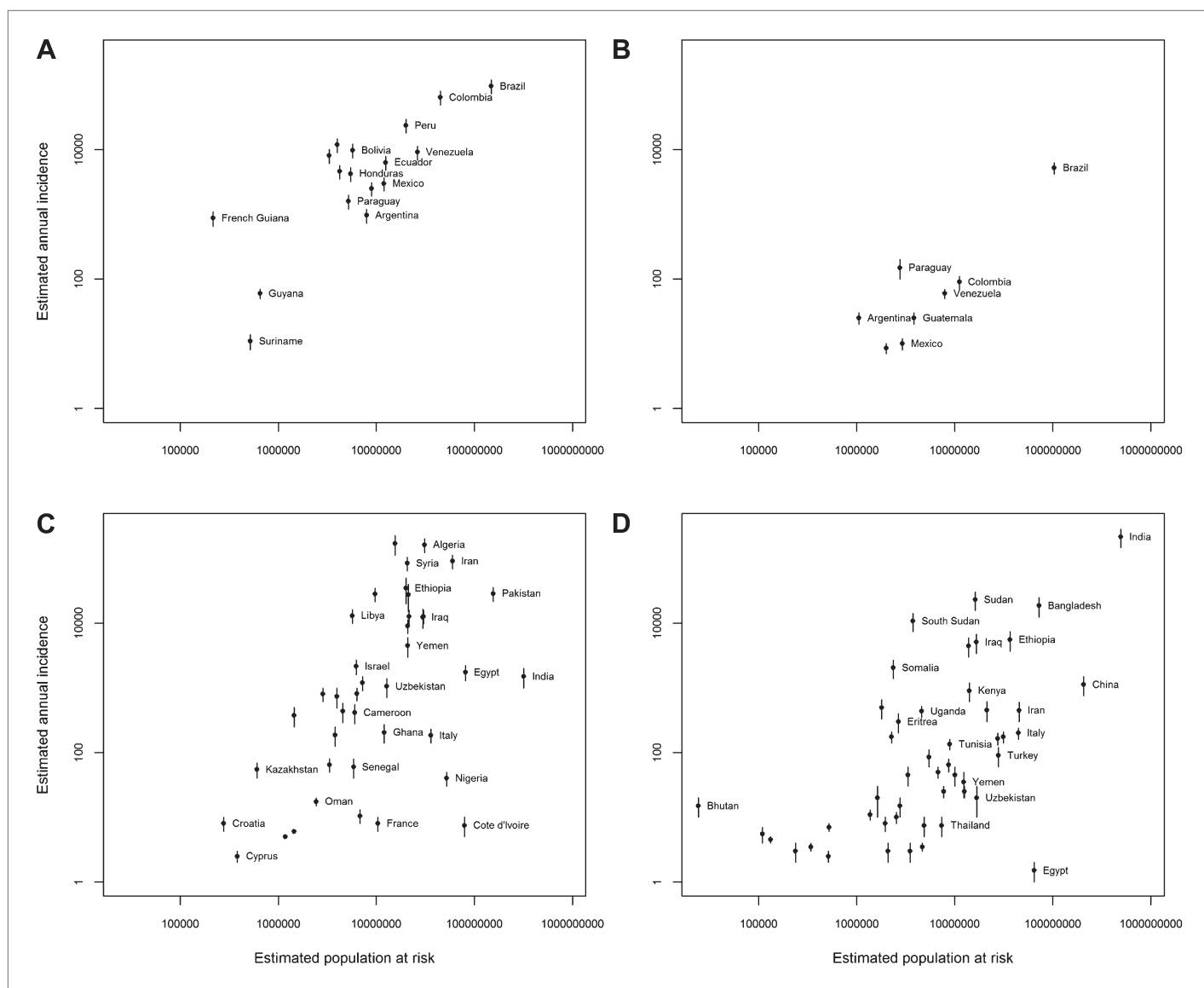


Figure 4—figure supplement 4. Population at risk estimates for leishmaniasis.

DOI: [10.7554/eLife.02851.015](https://doi.org/10.7554/eLife.02851.015)