

The Selective Estrogen Receptor Downregulator GDC-0810 is Efficacious in Diverse Models of ER+ Breast Cancer

James D. Joseph¹, Beatrice Darimont¹, Wei Zhou², Alfonso Arrazate², Amy Young², Ellen Ingalla², Kimberly Walter³, Robert A. Blake⁴, Jim Nonomiya⁴, Zhengyu Guan², Lorna Kategaya⁵, Steven P. Govek⁶, Andiliy G. Lai⁶, Mehmet Kahraman⁶, Dan Brigham¹, John Sensintaffar¹, Nhin Lu¹, Gang Shao¹, Jing Qian¹, Kate Grillot¹, Michael Moon¹, Rene Prudente¹, Eric Bischoff¹, Kyoung-Jin Lee⁷, Celine Bonnefous⁶, Karensa L. Douglas⁶, Jackaline D. Julien⁶, Johnny Y. Nagasawa⁶, Anna Aparicio⁷, Josh Kaufman⁷, Benjamin Haley⁸, Jennifer M. Giltane¹¹, Ingrid E. Wertz⁵, Mark R. Lackner³, Michelle A. Nannini², Deepak Sampath², Luis Schwarz⁹, H. Charles Manning¹⁰, Mohammed Noor Tantawy¹⁰, Carlos L. Arteaga⁹, Richard A. Heyman¹, Peter J. Rix⁷, Lori Friedman², Nicholas D. Smith⁶, Ciara Metcalfe^{2*}, Jeffrey H. Hager^{1*}

Department of ¹Biology, ⁶Chemistry and ⁷Drug Safety and Disposition, Seragon Pharmaceuticals.

Department of ²Translational Oncology, ³Oncology Biomarker Development, ⁴Biochemical and Cellular Pharmacology, ⁵Discovery Oncology, ⁸Molecular Biology, ¹¹Pathology Genentech.

⁹Department of Medicine and Breast Cancer Program, Vanderbilt-Ingram Cancer Center, and ¹⁰Vanderbilt University Institute of Imaging Sciences, Vanderbilt University.

*Co-corresponding authors: jeff.hager@icloud.com & metcalfe.ciara@gene.com

Summary: GDC-0810 is a novel, orally bioavailable SERD that exhibits robust pre-clinical activity in models of ER+ breast cancer, including models of tamoxifen resistance, and those that express the ER α mutations, ER.Y537S and ER.D538G.

ABSTRACT

ER-targeted therapeutics provide valuable treatment options for patients with ER+ breast cancer, however, current relapse and mortality rates emphasize the need for improved therapeutic strategies. The recent discovery of prevalent ER α mutations in relapsed tumors underscores a sustained reliance of advanced tumors on ER α signaling, and provides a strong rationale for continued targeting of ER α . Here we describe GDC-0810, a novel, non-steroidal, orally bioavailable selective ER downregulator (SERD), which was identified by prospectively optimizing ER α degradation, antagonism and pharmacokinetic properties. GDC-0810 induces a distinct ER α conformation, relative to that induced by currently approved therapeutics, suggesting a unique mechanism of action. GDC-0810 has robust *in vitro* and *in vivo* activity against a variety of human breast cancer cell lines and patient derived xenografts, including a tamoxifen-resistant model and those that harbor ER α mutations. GDC-0810 is currently being evaluated in Phase II clinical studies in women with ER+ breast cancer.

INTRODUCTION

Breast cancer is the most commonly diagnosed cancer and the second leading cause of death in women (Edwards et al., 2014). About 75% of breast cancers express estrogen receptor alpha (ER α), a hormone-regulated transcription factor (Dunnwald et al., 2007). ER α -positive breast cancers typically respond well to therapy that attenuates ER α signaling, either by blocking the production of estrogens via aromatase inhibitors, or antagonizing the activity of estrogens through competitive binding of ER antagonists such as tamoxifen (Puhalla et al., 2012). While estrogen disrupting therapies are often effective both in the adjuvant and metastatic setting, patients frequently relapse after prolonged therapy (Chia et al., 2008; Dowsett et al., 2010; Early Breast Cancer Trialists' Collaborative et al., 2011; Mauri et al., 2006).

Though resistance to endocrine therapies frequently emerges, relapsed tumors remain dependent on ER, which is highlighted by patient responses to second and third line endocrine therapies after failure of an earlier line (Group et al., 2009; Howell et al., 2005; Lewis and Jordan, 2005; Perey et al., 2007). ER signaling re-activation in the relapsed setting can occur due to changes in ligand sensitivity and specificity, for example, resistance to tamoxifen has been proposed to be a result of the selection of tumor cells that recognize the ER:tamoxifen complex as agonistic (Gottardis and Jordan, 1988; McDonnell and Wardell, 2010; Takimoto et al., 1999). More recently however, a series of mutations in the ligand binding domain of ER α have been found at a high prevalence (25-40%) in relapsed, metastatic patients, though are very rare in untreated populations (Jeselsohn et al., 2014; Li et al., 2013; Merenbakh-Lamin et al., 2013; Robinson et al., 2013; Toy et al., 2013). These mutations have been shown in overexpression experiments to confer estrogen-independent activity to the receptor, and to reduce the potency of, for example, tamoxifen. The continued dependence of breast cancer tumors on ER α provides a strong rationale to continue to target ER in both first line and relapsed/advanced settings.

Selective ER Downregulators (SERDs) are competitive ER α antagonists that also induce a conformational shift of the receptor that results in ubiquitination and subsequent degradation of ER α , via the ubiquitin-proteasome system (Berry et al., 2008; Wijayaratne and McDonnell, 2001; Wijayaratne et al., 1999). The unique dual-function of SERDs (ER antagonism and depletion) may enable them to block ER signaling in cellular settings where other endocrine agents, such as tamoxifen or aromatase inhibitors have failed. Indeed, the clinical impact of fulvestrant as a treatment of recurrent, endocrine resistant disease, supports this notion (Perey et al., 2007). Though fulvestrant has served as an important proof of concept for the SERD

approach [see also (Ellis et al., 2015)], it is limited by its poor pharmaceutical properties, which necessitates administration by intramuscular injection and limits the applied dose, exposure, and receptor engagement (Robertson et al., 2001; van Kruchten et al., 2015). The fulvestrant 500 mg regimen (500 mg on day 1, 14, 28; monthly thereafter) exhibited improvement in progression free survival and overall survival over the initially approved and marketed 250 mg regimen (Di Leo et al., 2010). The 500 mg regimen achieves higher plasma concentrations and a more rapid ascent to steady-state drug levels, which in turn is thought to result in superior modulation of ER signaling (Kuter et al., 2012; Ohno et al., 2010; Pritchard et al., 2010). However, the 500mg dose does not fully saturate ER binding in patients, as inhibition of [¹⁸F]fluoroestradiol uptake was incomplete in 38% (6/16) of patients analyzed. Importantly, this lack of receptor occupancy was associated with lack of clinical benefit (van Kruchten et al., 2015). Together, these data demonstrate that SERDs have the potential to provide effective and well-tolerated therapy for postmenopausal women with advanced breast cancer, and highlight the need for the development of SERDs with optimized bioavailability and pharmacokinetic properties. Here we describe a novel, potent non-steroidal ER antagonist and degrader, GDC-0810, that is orally bioavailable and has strong anti-tumor activity in endocrine-sensitive and -resistant models of ER+ breast cancer.

RESULTS

Identification of GDC-0810, a novel SERD

With the goal of creating a next generation, orally bioavailable SERD, we prospectively optimized ER α degradation, antagonist activity, as well pharmacokinetic properties, starting with a triphenylalkene ER ligand scaffold (Lai et al., 2015). These efforts resulted in the identification of an indazole series of SERDs, including GDC-0810 (Figure 1A). Compounds were assessed

for their ability to modulate ER α protein levels in MCF7 breast cancer cells using a quantitative In-Cell Western (ICW) immunofluorescence assay, which enabled determination of compound potency and maximal activity in a high throughput format. GDC-0810 was prioritized for further characterization based on its ability to robustly reduce cellular ER α levels within 4 hours, to levels approaching that observed with fulvestrant, with sub-nanomolar potency (Figure 1B and Table 1). The active metabolite of tamoxifen, 4-hydroxytamoxifen (4OH-tamoxifen), exhibited some activity in this assay, though it failed to reduce ER α signal to the level achieved by fulvestrant or GDC-0810. The ability of GDC-0810 to reduce steady-state levels of ER α was confirmed using a Western Blot assay (Figure 1C). We further demonstrated that GDC-0810-mediated ER α depletion is dependent on the 26S proteasome, since addition of the proteasome inhibitor MG132, fully blocked GDC-0810 depletion of ER α , similar to the effect of MG132 treatment in preventing fulvestrant-mediated ER turnover (Figure 1C, D).

In general, data generated in the ICW assay correlated well with Western Blot assays (Figure 1 – figure supplement 1). For certain ligands which showed modest activity in the ICW assay, but did not induce ER α degradation by Western Blot, such as 4OH-tamoxifen, the observed reduction of ER α signal in the ICW assay may be the result of changes in protein conformation, protein complex formation, or subcellular localization that limit the detection of the antibody epitope in the in situ ICW assay.

In cell-free radio-ligand competitive binding assays, GDC-0810 binds both ER α and ER β with low nanomolar affinity [Table 1, see also (Lai et al., 2015)]. In MCF7 cells GDC-0810 effectively antagonizes E2-mediated transcriptional activation of an ER reporter construct and

inhibits cell proliferation with nanomolar potency and efficacy similar to that of fulvestrant and 4OH-tamoxifen (Table 1). GDC-0810 is selective against the other nuclear hormone receptor (NHR) family members as monitored by competitive binding and reporter activation assays (Supplementary File 1A-C).

GDC-0810 induces a distinct ER α conformation versus tamoxifen and other ER therapeutics, and does not exhibit tamoxifen-like ER agonism in MCF7 cells

Nuclear receptors impart biological action through ligand-induced conformational change resulting in exposure of co-regulator interaction surfaces. To assess the ER α conformation induced by GDC-0810 relative to other SERMs and SERDs, we utilized a mammalian 2-hybrid based peptide interaction assay. This assay, run in the presence of saturating concentrations of ER ligands, differentiates ligand-induced ER conformations based on the ability of the ligand-bound receptor to interact with discriminatory peptide probes (Iannone et al., 2004; Norris et al., 1999; Paige et al., 1999). We included in our analysis fulvestrant, 4OH-tamoxifen, a number of additional clinically approved ER ligands, such as bazedoxifene, and also GW7604. GW7604 is an active metabolite of GW5638, an ER ligand that entered Phase I clinical trials for breast cancer, but is not currently in further clinical development. Like GDC-0810, GW5638 is a non-steroidal dual function ER antagonist and degrader (Lai et al., 2015; Willson et al., 1994; Willson et al., 1997). The GDC-0810:ER complex recruits a distinct set of peptides relative to the other ER:ligand complexes profiled here, with the exception of GW7604 (Lai et al., 2015). GDC-0810 thus induces an ER conformational profile that is different from that induced by 4OH-tamoxifen, fulvestrant and other marketed SERMs and similar to GW7604 (Figure 2A). Since the biological activity of ER α is determined by the conformation of the receptor and its

ability to interact with other regulatory proteins, this result implies differences in the response of ER α to GDC-0810 and the clinically approved ER α therapeutics.

Tamoxifen is a Selective ER Modulator (SERM), and as such can either antagonize, or agonize ER signaling, in a gene- and cell-specific manner. Though 4OH-tamoxifen primarily antagonizes estrogen-dependent ER signaling in breast cancer cells, its partial agonistic activity has been revealed through gene expression profiling in the absence of estrogen, in MCF7 cells (Wardell et al., 2013). To assess the potential agonistic activity of GDC-0810 we evaluated the consequence of GDC-0810 treatment on a previously described SERM discriminatory gene set, likewise, in the absence of estrogen in MCF7 cells (Wardell et al., 2013). In line with earlier observations, 4OH-tamoxifen induces a strong up-regulation of a gene set that includes the estrogen-responsive genes, *AGR2* and *RASGRP*, while fulvestrant fails to do so (Figure 2B). GDC-0810 most closely resembled fulvestrant and GW7604 in this analysis, displaying little of the transcriptional agonist activity observed with the SERMs 4OH-tamoxifen, lasofoxifene, arzoxifene or endoxifene and often demonstrating inverse agonist activity on estradiol responsive genes (Figure 2B). These findings are consistent with ER-ChIP analysis demonstrating that GDC-0810 treatment, similar to fulvestrant, can reduce the levels ER α associated with chromatin on ER α target genes (Figure 2 – figure supplement 1).

Wardell et al. have demonstrated that fulvestrant and bazedoxifene can inhibit ER signaling and estrogen-dependent proliferation in the absence of ER degradation (Wardell et al., 2011; Wardell et al., 2013). This was demonstrated using an experimental system whereby ER was over-expressed in an attempt to saturate the degradation machinery, enabling an uncoupling of ER

degradation from ER antagonism. Likewise, we sought to determine if GDC-0810 can inhibit ER signaling in the absence ER degradation, using a similar strategy (Wardell et al., 2011; Wardell et al., 2013). Over-expression of ER in doxycycline-inducible MCF7 cells resulted in the induction of the ER target gene, PR, consistent with ligand-independent activation of the pathway. Treating these cells with fulvestrant resulted in both depletion of ER, as well as suppression of PR. In the case of GDC-0810 treatment, PR was likewise suppressed, though ER levels remained high (Figure 2C). Cell viability assays demonstrated that both fulvestrant and GDC-0810 suppress proliferation of MCF7 cells over-expressing ER, with EC50s and IC50s similar to cells expressing endogenous levels of ER, despite the retention of high ER levels in the over-expressing cells treated with GDC-0810 (Figure 2D, E). These data imply that GDC-0810 has the ability to antagonize ER function independent from its degradation activity, consistent with the demonstration that GDC-0810 displaces the co-activator PGC1 α in cell free biochemical assays, in which ER degradation does not occur (see below, Figure 6A).

GDC-0810 displays mild estrogenic activity in uterine models in vitro and in vivo

Since the activity of ER ligands can be tissue/cell-type dependent, we next evaluated the effects of GDC-0810 in the uterus, first making use of the Ishikawa endometrial cell line, in which alkaline phosphatase expression is controlled by ER (Holinka et al., 1986; Littlefield et al., 1990). In line with previous reports, 4OH-tamoxifen robustly increases alkaline phosphatase activity, while fulvestrant shows no such effect (Figure 3A). GDC-0810 modestly increases alkaline phosphatase activity, though plateaus at low concentrations, below the level stimulated by 4OH-tamoxifen (Figure 3A). To follow up on this observation we next assessed the consequences of GDC-0810 administration on the uterus of juvenile rats. Tamoxifen at 60

mg/kg, dosed orally, once a day for 3 days, increases uterine wet weight, though not to the extent driven by the administration of 0.1 mg/kg 17 α estradiol over the same time period (Figure 3B). In contrast, Fulvestrant at 50 mg/kg acts as an inverse agonist, resulting in a significant decrease in uterine weight relative to the control group. GDC-0810 dosed at 0.1 or 10 mg/kg did not significantly alter uterine wet relative to the vehicle control (Figure 3B). Importantly though, histological analysis and quantification of endometrial cell height showed that, like estradiol and tamoxifen, GDC-0810 induced a cuboidal to columnar morphological change in the epithelial cells, while the epithelia from fulvestrant-treated animals remained cuboidal (Figure 3C, D). In line with the observed morphological changes to the endometrial epithelium, gene expression analysis demonstrated that GDC-0810 induces ER target genes, including C3 and MUC1 (Figure 3E). These in vivo phenotypes were observed at a GDC-0810 dose of 0.1 mg/kg and were not significantly different at the 10 mg/kg dose, suggesting saturation of the effect at low doses. Together, these data demonstrate that GDC-0810 mildly stimulates ER signaling in the uterus, similar to the recently described SERD AZD9496 (Weir et al., 2016). Intriguingly, IHC analysis of ER in the uterus showed that GDC-0810 only modestly reduces ER levels in this context, similar to estradiol, while fulvestrant robustly depletes ER.

GDC-0810 regresses tumors and suppresses estradiol uptake in tamoxifen-sensitive breast cancer tumor models

In mice, GDC-0810 exhibits low clearance (11 mL/min/kg) and 61% oral bioavailability (Lai et al., 2015). Importantly, GDC-0810 plasma concentrations increase proportionately with the applied dose and achieve an AUC₀₋₂₄ of 94.1 μ g*hr/ml when dosed by oral gavage at 100 mg/kg/day (Supplementary File 2A). To determine the ability of GDC-0810 to inhibit E2

stimulated tumor growth in vivo, we treated MCF7 tumor bearing nu/nu mice orthotopically implanted with 0.36 mg/60 day release E2 pellets (Innovative Research) with GDC-0810, ranging from 1 to 100 mg/kg/day p.o. Fulvestrant was delivered by sub-cutaneous injection, with an initial loading dose of 50 mg/kg on days 1, 3 and 8, and subsequent dosing of 25 mg/kg twice per week to achieve exposures similar to those achieved in the clinic. In the MCF7 xenograft model, GDC-0810 displayed dose dependent efficacy (Figure 4A). The 100 mg/kg/day dose caused tumor regressions; an effect similar to withdrawal of estrogen pellets at the start of dosing. In contrast, fulvestrant, at a clinically relevant dose as well as at a considerably higher dose (200 mg/kg, 3 times per week), yielded only modest tumor growth inhibition (Figure 4A and Figure 4 – figure supplement 1A). It is important to note that the restriction of the fulvestrant response to tumor growth inhibition, rather than stasis or tumor regression, was not a function of low exposure, as the plasma concentrations at the 200 mg/kg dose were on average 12-14 ug*hr/mL, approximately 30-fold above the clinical exposure of the fulvestrant 500 mg clinical regimen (Ohno et al., 2010; Pritchard et al., 2010). Gene expression analysis of harvested MCF7 tumors demonstrated that GDC-0810 (at 100 mg/kg/day, evaluated on day 28) robustly modulated ER target genes, including *PGR*, *c-MYC*, *AREG* and *MUC1* (Figure 4B, C; Figure 4 – figure supplement 1B). Indeed, the gene expression changes induced by GDC-0810 are similar to, and in some cases even more pronounced than, those induced by withdrawal of the estrogen pellet at the beginning of the study, highlighting that GDC-0810 actively and efficiently attenuates ER signaling (Figure 4B, C; Figure 4 – figure supplement 1B).

As an additional pharmacodynamic analysis in MCF7 xenografts, we next monitored tumor ¹⁸F-fluoroestradiol (FES) uptake by positron emission tomography (PET), which has previously been

used as a non-invasive, real-time measure of the activity of ER modulators [reviewed in (Liao et al., 2016)]. To determine the ability of GDC-0810 to effectively bind tumor-localized ER in vivo, FES-PET imaging was performed on mice bearing MCF7 xenograft tumors following a 7-day treatment with GDC-0810. Prior to GDC-0810 administration FES-PET signal was detectable in both the vehicle and pre-treatment groups (Figure 4D). However, when assayed after the seventh consecutive oral daily dose, GDC-0810 at 10 mg/kg/day and 100 mg/kg/day reduced FES uptake by 45 and 63 percent respectively (Figure 4D, E). At study termination on day 9, the GDC-0810 treatment groups displayed a dose dependent decrease in tumor volume and in ER α and PR immunohistochemical staining (Figure 4 – figure supplement 2). While the difference in reduction of FES uptake between the 10 mg/kg/day and 100 mg/kg/day treatment groups did not reach statistical significance, each dose resulted in a statistically lower FES uptake compared to that in vehicle-treated animals. This would suggest that maximal GDC-0810-mediated ER antagonism, as a result of receptor occupancy and/or degradation, is achieved with a dose of ≥ 10 and ≤ 100 mg/kg/day in this model system.

We next evaluated the activity of GDC-0810 in patient derived xenograft (PDX) model, HCI-003. Like MCF7, HCI-003 tumors are ER+, E2 dependent and tamoxifen sensitive (Figure 4 – figure supplement 1C). GDC-0810, dosed at 10 and 100 mg/kg/day in mice implanted with 1 mg E2 impregnated beeswax pellets, drove tumor stasis, while fulvestrant dosed at 30 times the clinical exposure induced tumor regression, approaching that observed in vehicle treated animals whose estradiol pellets were excised at start of the dosing period (Figure 4F). Consistent with GDC-0810 SERD activity in vitro, tumors collected after 43 days of dosing displayed reduced ER α target gene transcription and reduced ER α protein levels, as monitored by quantitative PCR

and Western Blot, respectively (Figure 4 – figure supplement 3). GDC-0810 also displayed anti-tumor activity in ZR75-1, an additional ER+ breast cancer xenograft model (Figure 4 – figure supplement 1D). Importantly, GDC-0810 did not exhibit any anti-tumor activity in MDA-MB-231, an ER negative human breast cancer tumor model (Figure 4 – figure supplement 4). Lack of efficacy in this ER-negative model is consistent with the GDC-0810 mechanism of action being selectively mediated through ER.

GDC-0810 has anti-tumor activity in a tamoxifen-resistant MCF7 model

We previously generated a tamoxifen-resistant xenograft model, TamR1, by chronically treating MCF7 tumor bearing mice with tamoxifen until a resistant tumor emerged (Lai et al., 2015). Consistent with other reported xenograft models of tamoxifen resistance, treatment of the TamR1 xenografts with tamoxifen stimulated tumor growth, relative to the E2 pellet harboring vehicle controls [Figure 5A, and (Connor et al., 2001; Gottardis and Jordan, 1988; Lai et al., 2015)]. Our earlier work showed that treatment with GDC-0810 p.o. at 100mg/kg/day induced tumor regressions in this model, while fulvestrant SC at 200 mg/kg (3x/week) exhibited only modest tumor growth inhibition (Lai et al., 2015). These experiments were conducted in mice with relatively high levels of circulating estradiol, with estradiol being delivered via 0.72 mg 60 day release E2 pellets that are reported by the manufacturer (Innovative Research) to deliver between 300 and 400 pg/ml estradiol. Under these conditions the high E2 reduces the steady state ER α protein levels, thus confounding the readout of ER α protein as a pharmacodynamic endpoint (Figure 5 – figure supplement 1). Given this limitation of the “high E2” models, the anti-tumor and pharmacodynamic response to GDC-0810 treatment was evaluated in the TamR1 model grown in mice implanted with pellets designed to release lower concentrations of estradiol

(0.18 mg 60 day E2 pellets, reported to deliver 75-100 pg/mL estradiol). These pellets are sufficient to support tumor growth but only modestly reduce ER α levels (Figure 5 – figure supplement 1).

In TamR1 tumors grown under these conditions of lower E2, GDC-0810 induced regression at all doses tested (Figure 5A). Fulvestrant, at the 200 mg/kg dose, where exposure is considerably higher than that achieved in the clinic, likewise resulted in regression of TamR1 tumors in animals harboring the 0.18 E2 pellet. Interestingly, the same dosing regimen of fulvestrant, showed only minor tumor growth inhibition in the presence of the 0.72 mg E2 pellet (Lai et al., 2015), suggesting that fulvestrant 200 mg (3x/week) does not effectively compete with the higher E2 levels elicited by the 0.72 mg E2 pellet. Similar to the in vitro observations, GDC-0810 treatment resulted in a dramatic reduction in ER α levels in the xenograft tumors by both immunohistochemistry and Western blot (Figure 5B; Figure 5 – figure supplement 2). Consistent with the anti-tumor effect, GDC-0810 treated tumors display reduced Ki-67 staining (Figure 5B and Figure 5 – figure supplement 2) and altered ER target gene transcription in a manner consistent with ER antagonism (Figure 5C).

GDC-0810 antagonizes ER α ligand binding domain mutants in vitro and in vivo

Recently, a series of ESR1 mutations were identified in patients with metastatic ER⁺ breast cancer, who have progressed on aromatase inhibitors and other endocrine therapies (Jeselsohn et al., 2014; Li et al., 2013; Merenbakh-Lamin et al., 2013; Robinson et al., 2013; Toy et al., 2013). Based on overexpression studies, these mutations have been proposed to confer estrogen-

independent activity to ER α and are thought to contribute to endocrine resistant disease (Jeselsohn et al., 2014; Li et al., 2013; Merenbakh-Lamin et al., 2013; Robinson et al., 2013; Toy et al., 2013). We focused on the two most commonly occurring mutations, ER.Y537S and ER.D538G, and addressed how these mutations might influence the activity of GDC-0810. In cell-free E2 competitive binding assays, GDC-0810 retains its ability to potently displace E2 from the ligand binding domain, albeit with a slightly increased IC₅₀ (WT: 2.6 nM vs. ER.Y537S: 5.5 nM and ER.D538G: 5.4 nM) (Figure 6A). We next determined that GDC-0810 can compete the PGC1 α co-activator peptide off the mutated ligand binding domain, implying that GDC-0810 is capable of driving an “active” to “inactive” conformational shift of mutant ER, though with a ~5-7 fold reduction in biochemical potency compared to wild-type ER (Fig 6B).

To further evaluate the activity of GDC-0810 in the mutant context, we engineered the Y537S mutation into the endogenous ESR1 allele in MCF7 cells, using CRISPR-Cas9 technology (Figure 6 – figure supplement 1A). Twenty-four clonal lines were generated and their mutant allele frequencies, at the DNA level, were evaluated using mutant-specific droplet digital PCR (ddPCR) (Figure 6 – figure supplement 1B). We selected 7 clones that contained the highest mutant allele frequency for further characterization. These clones were assessed for the expression of the mutant allele using ddPCR on cDNA, in cells grown in either standard media, or hormone-depleted charcoal stripped media. The mutant allele was expressed at ~33% of total mRNA, in all clones examined regardless of growth conditions. One of these clonal lines (clone 6) was selected for subsequent studies (Figure 6 – figure supplement 1C). Despite expressing only 33% mutant RNA, ER.Y537S cells display a high level of estrogen-independent ER pathway activity, as demonstrated by high expression of the ER-target genes, TFF1, GREB1 and

PGR, in the absence of estrogen, although these genes can be further stimulated with the addition of estrogen (Figure 6C). We then performed cell viability experiments, assessing the anti-proliferative activity of GDC-0810 in ER.WT and ER.Y537S cells. When the viability assay is conducted in the absence of E2, GDC-0810 displays a marked reduction in potency in the mutant versus wild-type setting, with 22 fold higher concentration being required to achieve 50% maximal inhibition of growth in the ER.Y537S versus ER.WT cells (Figure 6D, solid black line vs. solid blue line). In the presence of low E2 concentration (0.1nM), this potency shift is less apparent, with only 4 fold increased compound concentration being required to achieve the same growth inhibition as in the ER.WT cells (Figure 6D, dashed black line vs. dashed blue line). The patterns are similar in the case of fulvestrant, with greater potency shifts occurring in the absence of estrogen versus the presence of estrogen (Figure 6 – figure supplement 1E). The potency of 4OH-tamoxifen is marginally shifted in ER.Y537S cells relative to ER.WT cells (Figure 6 – figure supplement 1F). The observed potency-shift for GDC-0810 in mutant cells is not restricted to clone 6, as this phenotype was seen in an additional 6 clones that were evaluated (Figure 6 – figure supplement 1D).

We next compared the ability of GDC-0810 to reduce ER levels in ER.WT versus ER.Y537S cells, in the presence and absence of estrogen. Consistent with previous reports, estrogen itself reduces steady-state levels of ER, while simultaneously increasing PR expression (Figure 6E, lane 1 vs. lane 7). GDC-0810 reduces steady-state levels of ER protein, in both ER.WT and ER.Y537S cells, demonstrating that the presence of ER.Y537S does not preclude GDC-0810-mediated ER-degradation, though due to a mixed population of ER.WT and ER.Y537S we cannot directly determine if GDC-0810 induced degradation of ER.Y537S is any more or less

efficient than that of ER.WT (Figure 6E). The presence of ER.Y537S elevates PR protein levels in the absence of estrogen, consistent with the gene expression data, and this is further induced with the addition of estrogen. The absolute levels of PR achieved in mutant expressing cells are elevated compared to the levels seen in estrogen-treated wild-type ER cells, though this may be a feature of less than saturating/low E2 concentration. GDC-0810 reduces both estrogen-driven, and mutant-driven PR protein levels, although residual PR is still detected in the mutant cells at 24 hours post compound addition (Figure 6E). Like PR, cyclin D1 levels are increased by both estrogen stimulation and by the presence of the ER.Y537S mutation; in both cases treatment with GDC-0810 blocks this increase, with cyclin D1 levels being comparable to un-stimulated cells. In contrast to the robust ER-depletion mediated by GDC-0810 and fulvestrant, tamoxifen does not deplete ER in either ER.WT or ER.Y537S cells, and robustly stabilizes ER in the presence of estrogen, in a dose dependent manner, while simultaneously decreasing levels of PR (Figure 6 – figure supplement 1F, H). These data highlight the different consequences of the SERDs versus tamoxifen on ER levels, but demonstrate that GDC-0810, fulvestrant, and 4OH-tamoxifen are all mechanistically, and in principle, capable of suppressing ER signaling driven by the expression of ER.Y537S in vitro (Figure 6 – figure supplement 1F, H).

As an additional ER mutant knock-in model, AAV (adeno-associated virus)-mediated homologous recombination was used to introduce the ER.D538G mutation into T47D cells, such that the mutation would be expressed under the endogenous promoter. T47D ER.D538G cells, expressing WT:D538G mRNA at a 1:1 ratio (data not shown) express endogenous levels of total ER, though very high levels of PR relative to WT cells, even in the absence of estrogen, implying robust estrogen-independent pathway activity (Figure 7A). Stimulation with estrogen

results in depletion of ER in WT and D538G cells, as expected, though does not further induce PR in the mutant cells. In cell viability assays, GDC-0810 suppresses the proliferation of both ER.WT cells and ER.D538G cells, with modest differences in potency (Figure 7B). We next fluorescently labeled the T47D ER.WT (with RFP) and ER.D538G cells (with GFP) and performed cell-cell competition assays, to further evaluate the conditions under which ER mutant cells have a competitive growth advantage relative to wild-type cells, and the effect of mutant ER α on response to GDC-0810. When mixed at a 1:1 ratio at day 0, and grown in the absence of estrogen, ER.D538G cells robustly outcompete ER.WT cells, with WT cells representing only 7.8% (\pm 1%) of the total population on day 15 (Figure 7C, D). In the presence of 0.1 nM estrogen however, much of this competitive advantage is lost, with WT cells representing 40% \pm 0.2% of the total population at day 15 (Figure 7C, D). GDC-0810 attenuates both the estrogen-dependent growth of ER.WT cells, as well as estrogen-independent growth of the ER.D538G cells, though both cell types continue to proliferate at low levels in the presence of drug. In the case of the ER.WT cells, this rate of proliferation is equivalent to cells grown in the absence of estrogen, suggesting that ER-independent mechanisms may support low-level proliferation in these cells. These cell labeling/cell competition experiments further indicate that ER mutant cells do not confer a non-cell autonomous growth signal to ER.WT cells grown in the absence of estrogen, since ER.WT cells grow at the same rate, regardless of whether they are grown alone, or co-cultured with estrogen-independent ER.D538G cells (Figure 7E).

Though both the MCF7 ER.Y537S and T47D ER.D538G clones displayed constitutive ER activity in vitro, these cell lines did not form tumors when injected into nude mice in the absence of exogenous estradiol. Therefore, GDC-0810 was tested in a xenograft derived from MCF7

cells overexpressing amino-terminal HA-tagged ER.Y537S (HA-ER.Y537S), which formed rapidly growing tumors in ovariectomized mice without estradiol supplementation. Strikingly, GDC-0810 100 mg/kg/day p.o. induced tumor regressions in the HA-ER.Y537S overexpressing model, while tamoxifen 60 mg/kg/day p.o. and fulvestrant 200mg/kg SC (3x/week) resulted in tumor stasis at exposures higher than those achieved in clinic (Figure 8A). As an additional in vivo ER mutant model, we utilized WHIM20, an ER.Y537S-expressing patient derived xenograft model (PDX) (Li et al., 2013). WHIM20 is heterozygous for the Y537S mutation, though the mutant allele represents close to 100% of the ESR1 transcript produced in these cells (Figure 6 – figure supplement 1C). A pharmacodynamic (PD) experiment showed that GDC-0810, dosed orally at 100 mg/kg, and fulvestrant dosed intramuscularly at the high dose of 200 mg/kg for 4 days, both modulate a collection of known ER regulated targets, including robust suppression of RASGRP1 and AREG, as examples (Figure 8B). Western blot analysis, quantitative reverse phase protein array (RPPA) and IHC of ER and PR, in the same 4-day PD experiment, demonstrated that GDC-0810 and fulvestrant treatment resulted in modest decreases in ER and PR protein levels (Figure 8C, D). Importantly, in a separate efficacy study, GDC-0810 100 mg/kg/day treatment and tamoxifen 60 mg/kg/day induced tumor stasis, while fulvestrant at a dose that roughly achieves plasma levels similar to those achieved with the 500-mg dose in humans (50 mg/kg days 1, 3 and 7, 25 mg/kg weekly thereafter; 0.015 mg/mL at trough on day 21, AUC ~0.36 $\mu\text{g}\cdot\text{hr}/\text{mL}$) did not induce regression but resulted in tumor growth inhibition (Figure 8E, Supplementary File 2B).

DISCUSSION

Fulvestrant stands as proof of concept that the SERD class of ER modulators is an effective therapeutic modality to treat ER+ breast cancer. However, pre-clinical and clinical data indicate

that fulvestrant's therapeutic action is limited by its poor pharmaceutical properties. GDC-0810 is a product of efforts to capitalize on the advantages associated with the SERD approach, while overcoming the limitations associated with fulvestrant. GDC-0810 is a non-steroidal, orally bioavailable dual function ER antagonist and down-regulator that induces potent, rapid proteasome-mediated ER α degradation in breast cancer cells. GDC-0810 binds ER α with low nanomolar potency, exhibits good oral bioavailability, and dose-dependent/linear pharmacokinetics in the mouse. When administered orally, once daily, at doses that deliver substantial plasma concentrations and are well-tolerated, GDC-0810 displays robust anti-tumor activity in cell line-based and patient derived xenograft models of breast cancer.

Though GDC-0810 clearly shares features with fulvestrant, such as the ability to down-regulate ER protein levels in breast cancer cells, the GDC-0810:ER complex interacts with a set of peptides that are distinct from those that interact with the fulvestrant:ER complex, suggesting that these compounds promote distinct ER conformations, and may therefore have a different mechanism by which they induce ER turnover. The observations that 1) saturation of the GDC-0810 and the fulvestrant ER degradation machinery occur differentially in our doxycycline-inducible ER-over-expressing MCF7 cell line (Figure 2C) and 2) that fulvestrant, but not GDC-0810, drives degradation of ER in the rat uterus (Figure 3C, F), further supports the notion that these compounds have distinct mechanisms by which they induce ER degradation, and potentially require differing co-factors or distinct sets of E3 ligases. The observation that activation of the ER pathway occurs concomitantly with lack of robust ER degradation upon GDC-0810 treatment in the rat uterus suggests that although ER degradation is not absolutely

required for direct ER antagonism, it may be associated with preventing ER agonism, at least in this context.

The behavior of GDC-0810 in the conformational profiling assay is itself intriguing; specifically the robust recruitment of the GW5P2 and 47P3 peptides to the ER:GDC-0810 complex, which are not recruited by any of the already marketed SERM/SERD:ER complexes. GW5P2 was experimentally derived from efforts to identify unique, selective conformation-sensing peptides using a random 10-residue peptide phage display library in the presence of GW5638 or its metabolite GW7604 (Iannone et al., 2004). 47P3 was subsequently generated as an attempt to make a second generation, higher affinity, more specific peptide for the GW7604:ER complex. Notably, the binding of the GW5P2 and 47P3 peptides to various ER:ligand complexes was highly correlated with the presence of an acrylic or carboxylic acid head group in ligand structures (Iannone et al., 2004). The binding of GW5P2 and 47P3 to the ER:GDC-0810 complex thus likely reflects the presence of this acrylic acid side chain in GDC-0810. It was speculated that these selective peptides may be affinity-optimized versions of naturally occurring co-repressor peptides which are yet to be discovered (Iannone et al., 2004). Future identification of such co-repressors may provide a foothold in our efforts to understand the molecular mechanism by which GDC-0810 antagonizes ER function.

FES-PET imaging, which we used as a real-time pharmacodynamic biomarker in the MCF7 xenograft model, has previously been used to monitor the activity of endocrine agents in the clinic (Linden et al., 2011; Linden et al., 2006). A recent analysis demonstrated that reductions in FES-PET signal following fulvestrant treatment were both highly variable and incomplete (<

75% reduction in SUV) (van Kruchten et al., 2015). Furthermore, the lack of robust inhibition of FES-PET signal was associated with lack of clinical benefit (van Kruchten et al., 2015). FES-PET imaging is likewise being utilized in clinical studies of GDC-0810. In the Phase I dose escalation study in postmenopausal women with ER+ locally advanced or metastatic breast cancer (clinicaltrials.gov NCT01823835), complete/near complete (>90%) suppression of FES uptake was reported to be observed in 90% of patients with FES-PET scans, including 5 patients with known ESR1 mutations, providing early clinical evidence of robust ER engagement by GDC-0810 [(Dickler M, 2015), and manuscript in preparation]. Since FES-PET signal does not distinguish competitive antagonism from ER depletion; a thorough molecular evaluation of pre- and post- treatment biopsies will be required to better understand how ER antagonism coupled with degradation impacts ER signaling and ultimately clinical response.

The landmark discoveries of highly prevalent, recurrent ER α point mutations in patients that have failed multiple lines of endocrine therapy highlights the sustained reliance of ER+ breast cancer on ER function, and further emphasizes the need for next generation ER-targeted therapeutics. We generated ER.Y537S and ER.D538G knock-in mutant cell lines to model the two most commonly occurring clinical mutations. Despite expressing 50% or less of the mutant allele, these cells display robust estrogen-independent ER signaling and estrogen-independent cell proliferation. Cell competition assays further highlight that much of the competitive advantage of the mutant cells occurs in the absence of estrogen, mimicking AI-treatment, and that this competitive advantage is lost both in the presence of estrogen and in the presence of GDC-0810. These data are consistent with recent retrospective clinical studies showing that ESR1 mutations in plasma DNA predict relative resistance to AIs but not to fulvestrant (Fribbens

et al., 2016; Schiavon et al., 2015; Spoerke et al., 2016). In patients, these mutations were frequently sub-clonal, and the question was raised as to whether estrogen-independent ER mutant cells might confer estrogen-independence to neighboring ER wild-type cells. Based on our observations from the T47D model, this appears not to be the case, as ER.WT cells exhibit the same growth rate, regardless of whether they are co-cultured with ER.D538G-expressing cells or grown alone.

GDC-0810 maintains its ability to induce ER degradation, to suppress ER signaling, and to inhibit proliferation in cell lines that express mutant ER, though a higher drug concentration is needed. Structural studies and molecular dynamics simulations of ER mutants have demonstrated that the Y537S and D538G substitutions shift ER, and particularly helix 12 (H12), into a conformation that resembles an active/liganded ER wild-type conformation, providing a molecular explanation for the constitutive activity of these mutations (Nettles et al., 2008; Toy et al., 2013). A recent biophysical analysis of these mutants has provided an important extension of those findings, demonstrating that this “pre-organized agonist state” restricts access to the ligand binding domain, which influences binding of both estrogen and tamoxifen, and presumably other ligands, including GDC-0810, which is consistent with what we show here (Fanning et al., 2016). Fanning et al. further demonstrate that tamoxifen fails to fully restore H12 as well as the H11-12 loop back to the wild-type antagonist state, providing a further explanation for reduced tamoxifen potency in the mutant context. They hypothesize that highly potent, next generation SERDs, including GDC-0810, may have an increased ability to destabilize H12 and thereby drive efficacy in the ER mutant setting. Our observations that despite the somewhat reduced potency in vitro, GDC-0810 displays robust activity in mutant models in vivo, are in line with

this hypothesis, although we acknowledge that tamoxifen likewise exhibits robust in vivo efficacy in the WHIM20 ER.Y537S model. The data demonstrating in vivo activity for GDC-0810 in ER mutant models is consistent with: 1) the in vivo exposures of GDC-0810 being sufficient to overcome the potency shifts caused by ER.Y537S in vitro, and 2) the level of ER pathway suppression driven by GDC-0810 in the mutant context being sufficient for in vivo anti-tumor activity. How these pre-clinical studies will relate to clinical observations is an ongoing question; the activity of GDC-0810 in ER mutant versus wild-type patients is being carefully monitored in clinical studies.

The clinical activity of fulvestrant supports ER degradation as a desirable feature of ER therapeutics targeting ER+ breast cancer. However, the question still remains as to how much advantage SERDs will have relative to ER ligands that function as potent antagonists in the absence of ER degradation. Indeed, our data shows that despite differences in activity in vitro, tamoxifen, like GDC-0810 is efficacious in ER.WT and mutant models in vivo, and it could be argued that the superior activity of GDC-0810 could in some cases be due to its potent antagonistic effects coupled together with good bioavailability and PK properties, rather than its ability to lower ER protein levels. Along these lines, we show that GDC-0810's ER degradation activity can be uncoupled from its antagonistic activity in MCF7 cells. A recent study likewise highlighted the activity of bazedoxifene, a SERD/SERM hybrid that displays only modest ER degradation activity relative to fulvestrant and GDC-0810, as having robust efficacy against ER.WT and mutant models both in vitro and in vivo (Wardell et al., 2015). It stands to reason that in many cases, antagonism of the ER signaling pathway should be sufficient to drive anti-tumor activity. We argue that the benefit of SERDs vs. non-degrader antagonists will be most

535 apparent in those contexts where ER becomes reactivated in the presence of drug, such as is
536 observed in the TamR1 xenograft, in which tamoxifen behaves as a strong agonist. Since the
537 relatively limited number of pre-clinical in vivo models fails to recapitulate the multiple potential
538 mechanisms of ER-dependent resistance, nor the profound heterogeneity that exists across ER+
539 breast cancer patients, we feel that this is a question that will ultimately be addressed in the
540 clinic, as we gain additional experience with GDC-0810 and other SERDs.

541

MATERIALS & METHODS

Cell culture and reagents

MCF7 (ATCC), T47D (ATCC), ZR-75-1 (ATCC) cells were maintained in RPMI 1640. Ishikawa (Sigma), HEK293T (ATCC) and MDA-MB-231 (ATCC) cells were maintained in DMEM. CV1 (ATCC) and HEPG2 (ATCC) cells were maintained in MEM. All medium was supplemented with 10% fetal bovine serum (FBS) (Hyclone), 1 mM sodium pyruvate and 1X non-essential amino acids unless otherwise indicated. Unless indicated, tissue culture supplements and medium were purchased from Mediatech or Invitrogen. GDC-0810, arzoxifene and bazedoxifene were synthesized at Seragon Pharmaceuticals or Genentech. Fulvestrant and raloxifene were purchased from Waterstone Technology LLC. 4OH-tamoxifen, endoxifen, and 17 β -estradiol were purchased from Sigma Aldrich. Lasofoxifene was purchased from Toronto Research Chemicals.

Cell line authentication/quality control is conducted by Genentech's centralized cell repository and is conducted as follows: *Short Tandem Repeat (STR) Profiling* STR profiles are determined for each line using the Promega PowerPlex 16 System. This is performed once and compared to external STR profiles of cell lines (when available) to determine cell line ancestry.

Loci analyzed: Detection of sixteen loci (fifteen STR loci and Amelogenin for gender identification), including D3S1358, TH01, D21S11, D18S51, Penta E, D5S818, D13S317, D7S820, D16S539, CSF1PO, Penta D, AMEL, vWA, D8S1179 and TPOX

SNP fingerprinting SNP profiles are performed each time new stocks are expanded for cryopreservation. Cell line identity is verified by high-throughput SNP profiling using Fluidigm multiplexed assays. SNPs were selected based on minor allele frequency and presence on

commercial genotyping platforms. SNP profiles are compared to SNP calls from available internal and external data (when available) to determine or confirm ancestry. In cases where data is unavailable or cell line ancestry is questionable, DNA or cell lines are re-purchased to perform profiling to confirm cell line ancestry. **SNPs analyzed:** rs11746396, rs16928965, rs2172614, rs10050093, rs10828176, rs16888998, rs16999576, rs1912640, rs2355988, rs3125842, rs10018359, rs10410468, rs10834627, rs11083145, rs11100847, rs11638893, rs12537, rs1956898, rs2069492, rs10740186, rs12486048, rs13032222, rs1635191, rs17174920, rs2590442, rs2714679, rs2928432, rs2999156, rs10461909, rs11180435, rs1784232, rs3783412, rs10885378, rs1726254, rs2391691, rs3739422, rs10108245, rs1425916, rs1325922, rs1709795, rs1934395, rs2280916, rs2563263, rs10755578, rs1529192, rs2927899, rs2848745, rs10977980

Mycoplasma Testing All stocks are tested for mycoplasma prior to and after cells are cryopreserved. Two methods are used to avoid false positive/negative results: Lonza Mycoalert and Stratagene Mycosensor.

Cell growth rates and morphology are also monitored for any batch-to-batch changes.

In-Cell-Western Assay

Trypsinized MCF7 cells were washed twice in phenol-red-free RPMI 1640 (supplemented with 5% CSS, sodium pyruvate, and non-essential amino acids), adjusted to a concentration of 200,000 cells in the same RPMI culture medium, and dispensed in 16 μ L aliquots into flat clear bottom TC-Treated 384 Well plates (Corning). Cells were incubated for 72 hours, after which ligand diluted in RPMI culture medium was added in a 16 μ L volume. After 4 hours' incubation, 16 μ L of 30% neutral buffered formalin was added directly to the 32 μ L cell culture.

The fixed cells were permeabilized with PBS containing 0.1% Triton X-100, washed with PBS containing 0.1% Tween, blocked with Odyssey Blocking Buffer (LI-COR), incubated with Rabbit anti-ER α antibody (SP-1; Thermo Scientific), washed, incubated with IRDye 800 CW goat anti rabbit secondary antibody and Draq5 DNA stain. Plates were washed and ER α and DNA levels were quantitated using a LI-COR Odyssey infrared imaging system. ER levels were normalized to DNA. Percent ER α was defined as normalized ER α sample/normalized ER α untreated cells x 100.

Western Blot

Proteins from cell lysates were separated electrophoretically using NuPAGE 4-12% Bis Tris Gels (Life technologies) in MOPS buffer (Life Technologies). Gels were then electroblotted onto Nitrocellulose Pre-Cut Blotting Membranes (Life Technologies), blocked with LI-COR blocking buffer (LI-COR), incubated with Rabbit anti-ER α antibody (SP-1; Thermo Scientific) and mouse Anti- α -Tubulin antibody (DM1A, Sigma-Aldrich). Membranes were washed with 0.1% tween-20 in PBS. Membranes were then incubated with IRDye 800 CW goat anti rabbit and IRDye 680 CW goat anti mouse secondary antibodies (LI-COR), washed, and scanned using a LI-COR Odyssey infrared imaging system. ER α and α -tubulin levels were quantitated using a LI-COR Odyssey infrared imaging system. ER levels were normalized to α -tubulin. Percent ER α was defined as normalized ER α sample/normalized ER α untreated cells x 100.

Viability assays

Trypsinized MCF7 cells were adjusted to a concentration of 40,000 cells per mL in RPMI 1640 (supplemented with 10% FBS, sodium pyruvate, and non-essential amino acids), and dispensed

in 16 μ L aliquots into 384 well plates. Cells were incubated for 24 hours, after which ligand diluted in RPMI culture medium was added in a 16 μ L volume. After 5 days' incubation, 16 μ L of CellTiter-Glo Luminescent Cell Viability Assay (Promega, Madison, WI) was added and Relative Luminescence Units (RLUs) measured. Cell viability data is presented as relative luciferase activity defined as $\text{RLU sample} / \text{RLU untreated} \times 100$. For the comparison of MCF7 ER.WT and ER.Y537S cells, WT cells were pre-conditioned in charcoal stripped FBS for 3 days, and mutant cells are consistently grown in such conditions. Additionally, these particular assays were performed over 7 days.

Engineering of MCF7 and T47D cells

Doxycycline-inducible ER over-expressing MCF7 cells: lentiviral supernatants were generated by co-transient transfection of a lentivirus plasmid pINCUCER20 encoding ER α , the plasmid expressing the vesicular stomatitis virus (VSV-G) envelope glycoprotein and packaging plasmid delta 8.9 in HEK293T cells using Lipofectamine (Invitrogen). MCF-7 target cells were then transduced with lentiviral supernatants and infected cells were selected for neomycin (G418) resistance. Cells were characterized for doxycycline-inducible ER expression using western blot analysis.

MCF7 CRISPR ER.Y537S knock-in cells: MCF7 cells expressing the ER.Y537S variant were generated using CRISPR-Cas9 gene editing. The donor vector, containing the mutation of interest in the 3' homology arm, and the gRNA, designed to cleave upstream of exon 10, along with Cas9 expression vector, were transfected into MCF7 cells. Pools of MCF7 cells in which donor DNA had been incorporated were obtained after positive (puromycin) and counter (ganciclovir) selection. Clones derived from single cells were then subject to PCR and Sanger

sequencing, and subsequently to ddPCR to determine the allelic frequencies. Positive clones were infected with Ad-CMV-iCre to excise the selection cassette, which was followed by GFP-negative cell sorting.

HA-ER.Y537S stable over-expressing MCF7 cells: This cell line was generated by sub-cloning ESR1 wild-type and mutant cDNAs containing an amino terminal hemagglutinin tag into pCDH-EF1-MCS-(PGK-Puro) (System Biosciences). The resulting plasmids, in addition to an empty vector negative control, were subsequently co-transfected into HEK293T cells with the pPACKH1 packaging plasmid mix (System Biosciences) according to the manufacturer's protocol. After transfection, lentiviral particles were purified from the cell medium, and used to transduce MCF7 cells. Stable cell lines were selected by growth in RPMI containing 10% FBS plus 1 μ G/mL puromycin. Following selection, expression of HA-tagged mutant ER α was confirmed by western blot using the 6E2 mouse monoclonal anti-HA antibody (Cell Signaling).

T47D ER.D538G knock-in cell line: T47D cells expressing ER.D538G were generated by Horizon, using rAAV-mediated homologous recombination. The cell line was sequence confirmed and established to express 50% mutant *ESR1*. Cells were fluorescently labeled using IncuCyte™ NucLight™ Lentivirus reagents according to manufacturers instructions.

ER α Co-activator Peptide (PGC1 α) Antagonist Assay

Test compounds were serially diluted in DMSO then diluted in TR-FRET Co-regulator Buffer E (Life Technologies PV4540) and 2 ml was transferred to a 1536-well (Aurora Biotechnologies MaKO 1536 Black Plate, #00028905) using a Biomek FX. A Beckman Coulter Bioraptr Dispenser was used to dispense: 2 ml per well of "3x ER α solution": 22 nM ER α (human estrogen receptor alpha, GST-tagged ESR1 ligand binding domain, spanning residues S282-

V595, with either wild-type sequence or containing the mutations: Y537S or D538G) in TR-FRET Co-regulator Buffer E containing 7.5mM dithiothreitol (DTT); and 2 ml of “3x assay mix” containing: 750 nM Fluorescein-PGC1a peptide sequence: EAEEPSLLKKLLLAPANTQ; (Life Technologies PV4421), 12 nM Estradiol, 15 nM LanthaScreen Tb-anti-GST antibody (Life Technologies, A15113) in TR-FRET Co-regulator Buffer E (with 7.5 mM DTT). Plates were centrifuged and incubated for 2 hours at room temperature. TR-FRET measurements were made using a Perkin Elmer EnVision Fluorescence Reader using Excitation: 340 nm and Emission: 495 nm and 520 nm. Percentage inhibition values were calculated relative to no compound (dimethylsulfoxide only) controls and a “no ERa controls”. Curve fitting and IC50 calculations were carried out using Genedata Screener software.

Juvenile Rat Uterus Assays

Uterine Wet Weight: At 21 days of age, Sprague Dawley rats were weaned, randomized into groups (n=5) and treated once a day for 4 days with compounds of interest at indicated doses. Rats were euthanized 4 hours after the final dose. Uteri were then dissected, weighed and fixed for histological examination. A small portion of tissue was saved prior to fixation for mRNA isolation and gene expression analysis.

Quantification of endometrial cell heights: H&E stained sections from bilateral representative uterine horn cross-sections were examined from two animals treated with the compounds shown. Endometrial cell height was digitally measured from the basement membrane to the apical (luminal) surface (orange line), using a digitally scanned image at 20X magnification. Obliquely cut areas were avoided. Three digital measurements were taken from each section (n=6). Results are displayed as the mean endometrial cell height in two animals +/- standard error (n=2).

ER IHC: Estrogen receptor was detected using the mouse monoclonal anti-ER (clone 1D5, Dako), incubated for 60 minutes at RT at a dilution of 0.5 ug/ml, and visualized after secondary rabbit anti-mouse antibody binding with Powervision DAB (Leica Powersystems). H-scores were estimated manually, incorporating both intensity and percentage of positive nuclei, using the following formula: $(0 \times \%negative) + (1 \times \%weak) + (2 \times \%moderate) + (3 \times \%strong)$

Transcriptional Reporter Assays

Specific details of the ER α conformational profiling assay, and MCF7, ER α mutant, ER β , PR-A, PR-B, MR and GR transcriptional reporter assays are presented in the Appendix.

Nuclear Receptor Binding Assays

Competitive radioligand binding assays were performed using either purified protein (for ER α , ER β and GR) or cell extracts (for AR) as described in the Appendix.

RNA Isolation, Quantitative PCR Assays and ddPCR assays

Transcriptional activity of ER modulated genes from in vitro and in vivo samples, and ddPCR assays are described in the Appendix.

Chromatin Immunoprecipitation Assay

ChIP assays were performed as described in the Appendix.

In vivo pharmacology

Animal studies were conducted in accordance with the Guide for the Care and Use of Laboratory Animals, National Academy Press (2006), conforming to California State legal and ethical

practices and approved by the Institutional Animal Care and Use Committee (IACUC, Seragon and/or Genentech).

Depending on the tumor line and experimental paradigm, animals were ovariectomized and/or implanted with estradiol impregnated pellets to stimulate tumor growth. Tumor fragments or cell suspensions were implanted subcutaneously on the right flank. Specific experimental and treatment paradigms are listed in the Supplemental information. Tumors were measured in two dimensions twice weekly. Volume in mm^3 was calculated by the formula: volume = length x (width²)/2. When tumors reached an average size of roughly 150 – 350 mm^3 , animals were randomized into groups and treatment was started. Animals were sacrificed after the final dose and tumors were excised, cut into approximately 30 mg fragments and flash frozen for pharmacodynamic analysis. Additional tumor fragments for immunohistochemistry were placed in 10% Neutral Buffered Formalin for 24 hours, and transferred to 70% ethanol until processing. 5um sections were labeled for ER α (Abcam#16660) or Ki67 (Abcam#16667) and stained with HRP/DAB detection kit (Abcam #64261). Details of the FES/PET-CT imaging of the MCF7 xenograft tumors are provided in the Supplementary Methods and Materials.

REFERENCES

- Berry, N.B., Fan, M., and Nephew, K.P. (2008). Estrogen receptor-alpha hinge-region lysines 302 and 303 regulate receptor degradation by the proteasome. *Mol Endocrinol* 22, 1535-1551.
- Cheng, Y., and Prusoff, W.H. (1973). Relationship between the inhibition constant (K_i) and the concentration of inhibitor which causes 50 per cent inhibition (I₅₀) of an enzymatic reaction. *Biochemical pharmacology* 22, 3099-3108.
- Chia, S., Gradishar, W., Mauriac, L., Bines, J., Amant, F., Federico, M., Fein, L., Romieu, G., Buzdar, A., Robertson, J.F., *et al.* (2008). Double-blind, randomized placebo controlled trial of fulvestrant compared with exemestane after prior nonsteroidal aromatase inhibitor therapy in postmenopausal women with hormone receptor-positive, advanced breast cancer: results from EFECT. *J Clin Oncol* 26, 1664-1670.
- Connor, C.E., Norris, J.D., Broadwater, G., Willson, T.M., Gottardis, M.M., Dewhirst, M.W., and McDonnell, D.P. (2001). Circumventing tamoxifen resistance in breast cancers using antiestrogens that induce unique conformational changes in the estrogen receptor. *Cancer Res* 61, 2917-2922.
- DeRose, Y.S., Wang, G., Lin, Y.C., Bernard, P.S., Buys, S.S., Ebbert, M.T., Factor, R., Matsen, C., Milash, B.A., Nelson, E., *et al.* (2011). Tumor grafts derived from women with breast cancer authentically reflect tumor pathology, growth, metastasis and disease outcomes. *Nat Med* 17, 1514-1520.
- Di Leo, A., Jerusalem, G., Petruzelka, L., Torres, R., Bondarenko, I.N., Khasanov, R., Verhoeven, D., Pedrini, J.L., Smirnova, I., Lichinitser, M.R., *et al.* (2010). Results of the CONFIRM phase III trial comparing fulvestrant 250 mg with fulvestrant 500 mg in postmenopausal women with estrogen receptor-positive advanced breast cancer. *J Clin Oncol* 28, 4594-4600.
- Dickler M, B.A., Mayer I, Winer E, Rix P, Hager J, Chen M, Chan I, Chow-Maneval E, Arteaga C, and Baselga J (2015). Abstract CT231: A first-in-human phase I study to evaluate the oral selective estrogen receptor degrader GDC-0810 (ARN-810) in postmenopausal women with estrogen receptor+ HER2-, advanced/metastatic breast cancer. Paper presented at: AACR 106th Annual Meeting (Philadelphia, PA: Cancer Research).

758 Dowsett, M., Cuzick, J., Ingle, J., Coates, A., Forbes, J., Bliss, J., Buyse, M., Baum, M., Buzdar,
 759 A., Colleoni, M., *et al.* (2010). Meta-analysis of breast cancer outcomes in adjuvant trials of
 760 aromatase inhibitors versus tamoxifen. *J Clin Oncol* 28, 509-518.
 761 Dunnwald, L.K., Rossing, M.A., and Li, C.I. (2007). Hormone receptor status, tumor
 762 characteristics, and prognosis: a prospective cohort of breast cancer patients. *Breast Cancer Res*
 763 9, R6.
 764 Early Breast Cancer Trialists' Collaborative, G., Davies, C., Godwin, J., Gray, R., Clarke, M.,
 765 Cutter, D., Darby, S., McGale, P., Pan, H.C., Taylor, C., *et al.* (2011). Relevance of breast cancer
 766 hormone receptors and other factors to the efficacy of adjuvant tamoxifen: patient-level meta-
 767 analysis of randomised trials. *Lancet* 378, 771-784.
 768 Edwards, B.K., Noone, A.M., Mariotto, A.B., Simard, E.P., Boscoe, F.P., Henley, S.J., Jemal,
 769 A., Cho, H., Anderson, R.N., Kohler, B.A., *et al.* (2014). Annual Report to the Nation on the
 770 status of cancer, 1975-2010, featuring prevalence of comorbidity and impact on survival among
 771 persons with lung, colorectal, breast, or prostate cancer. *Cancer* 120, 1290-1314.
 772 Ellis, M.J., Llombart-Cussac, A., Feltl, D., Dewar, J.A., Jasiowka, M., Hewson, N., Rukazenzov,
 773 Y., and Robertson, J.F. (2015). Fulvestrant 500 mg Versus Anastrozole 1 mg for the First-Line
 774 Treatment of Advanced Breast Cancer: Overall Survival Analysis From the Phase II FIRST
 775 Study. *J Clin Oncol* 33, 3781-3787.
 776 Fanning, S.W., Mayne, C.G., Dharmarajan, V., Carlson, K.E., Martin, T.A., Novick, S.J., Toy,
 777 W., Green, B., Panchamukhi, S., Katzenellenbogen, B.S., *et al.* (2016). Estrogen receptor alpha
 778 somatic mutations Y537S and D538G confer breast cancer endocrine resistance by stabilizing
 779 the activating function-2 binding conformation. *Elife* 5.
 780 Fribbens, C., O'Leary, B., Kilburn, L., Hrebien, S., Garcia-Murillas, I., Beaney, M., Cristofanilli,
 781 M., Andre, F., Loi, S., Loibl, S., *et al.* (2016). Plasma ESR1 Mutations and the Treatment of
 782 Estrogen Receptor-Positive Advanced Breast Cancer. *J Clin Oncol*.
 783 Gottardis, M.M., and Jordan, V.C. (1988). Development of tamoxifen-stimulated growth of
 784 MCF-7 tumors in athymic mice after long-term antiestrogen administration. *Cancer Res* 48,
 785 5183-5187.
 786 Group, B.I.G.C., Mouridsen, H., Giobbie-Hurder, A., Goldhirsch, A., Thurlimann, B., Paridaens,
 787 R., Smith, I., Mauriac, L., Forbes, J., Price, K.N., *et al.* (2009). Letrozole therapy alone or in
 788 sequence with tamoxifen in women with breast cancer. *N Engl J Med* 361, 766-776.

789 Holinka, C.F., Hata, H., Kuramoto, H., and Gulpide, E. (1986). Effects of steroid hormones and
 790 antisteroids on alkaline phosphatase activity in human endometrial cancer cells (Ishikawa line).
 791 *Cancer Res* 46, 2771-2774.

792 Howell, A., Pippen, J., Elledge, R.M., Mauriac, L., Vergote, I., Jones, S.E., Come, S.E.,
 793 Osborne, C.K., and Robertson, J.F. (2005). Fulvestrant versus anastrozole for the treatment of
 794 advanced breast carcinoma: a prospectively planned combined survival analysis of two
 795 multicenter trials. *Cancer* 104, 236-239.

796 Iannone, M.A., Simmons, C.A., Kadwell, S.H., Svoboda, D.L., Vanderwall, D.E., Deng, S.J.,
 797 Consler, T.G., Shearin, J., Gray, J.G., and Pearce, K.H. (2004). Correlation between in vitro
 798 peptide binding profiles and cellular activities for estrogen receptor-modulating compounds. *Mol*
 799 *Endocrinol* 18, 1064-1081.

800 Jeselsohn, R., Yelensky, R., Buchwalter, G., Frampton, G., Meric-Bernstam, F., Gonzalez-
 801 Angulo, A.M., Ferrer-Lozano, J., Perez-Fidalgo, J.A., Cristofanilli, M., Gomez, H., *et al.* (2014).
 802 Emergence of constitutively active estrogen receptor-alpha mutations in pretreated advanced
 803 estrogen receptor-positive breast cancer. *Clin Cancer Res* 20, 1757-1767.

804 Kuter, I., Gee, J.M., Hegg, R., Singer, C.F., Badwe, R.A., Lowe, E.S., Emeribe, U.A., Anderson,
 805 E., Sapunar, F., Finlay, P., *et al.* (2012). Dose-dependent change in biomarkers during
 806 neoadjuvant endocrine therapy with fulvestrant: results from NEWEST, a randomized Phase II
 807 study. *Breast cancer research and treatment* 133, 237-246.

808 Lai, A., Kahraman, M., Govek, S., Nagasawa, J., Bonnefous, C., Julien, J., Douglas, K.,
 809 Sensintaffar, J., Lu, N., Lee, K.J., *et al.* (2015). Identification of GDC-0810 (ARN-810), an
 810 Orally Bioavailable Selective Estrogen Receptor Degradar (SERD) that Demonstrates Robust
 811 Activity in Tamoxifen-Resistant Breast Cancer Xenografts. *J Med Chem* 58, 4888-4904.

812 Lewis, J.S., and Jordan, V.C. (2005). Selective estrogen receptor modulators (SERMs):
 813 mechanisms of anticarcinogenesis and drug resistance. *Mutat Res* 591, 247-263.

814 Li, S., Shen, D., Shao, J., Crowder, R., Liu, W., Prat, A., He, X., Liu, S., Hoog, J., Lu, C., *et al.*
 815 (2013). Endocrine-therapy-resistant ESR1 variants revealed by genomic characterization of
 816 breast-cancer-derived xenografts. *Cell reports* 4, 1116-1130.

817 Liao, G.J., Clark, A.S., Schubert, E.K., and Mankoff, D.A. (2016). 18F-Fluoroestradiol PET:
 818 Current Status and Potential Future Clinical Applications. *J Nucl Med*.

819 Linden, H.M., Kurland, B.F., Peterson, L.M., Schubert, E.K., Gralow, J.R., Specht, J.M., Ellis,
 820 G.K., Lawton, T.J., Livingston, R.B., Petra, P.H., *et al.* (2011). Fluoroestradiol positron emission
 821 tomography reveals differences in pharmacodynamics of aromatase inhibitors, tamoxifen, and
 822 fulvestrant in patients with metastatic breast cancer. *Clin Cancer Res* 17, 4799-4805.
 823 Linden, H.M., Stekhova, S.A., Link, J.M., Gralow, J.R., Livingston, R.B., Ellis, G.K., Petra,
 824 P.H., Peterson, L.M., Schubert, E.K., Dunnwald, L.K., *et al.* (2006). Quantitative fluoroestradiol
 825 positron emission tomography imaging predicts response to endocrine treatment in breast cancer.
 826 *J Clin Oncol* 24, 2793-2799.
 827 Littlefield, B.A., Gurbide, E., Markiewicz, L., McKinley, B., and Hochberg, R.B. (1990). A
 828 simple and sensitive microtiter plate estrogen bioassay based on stimulation of alkaline
 829 phosphatase in Ishikawa cells: estrogenic action of delta 5 adrenal steroids. *Endocrinology* 127,
 830 2757-2762.
 831 Loening, A.M., and Gambhir, S.S. (2003). AMIDE: a free software tool for multimodality
 832 medical image analysis. *Molecular imaging* 2, 131-137.
 833 Mauri, D., Pavlidis, N., Polyzos, N.P., and Ioannidis, J.P. (2006). Survival with aromatase
 834 inhibitors and inactivators versus standard hormonal therapy in advanced breast cancer: meta-
 835 analysis. *Journal of the National Cancer Institute* 98, 1285-1291.
 836 McDonnell, D.P., and Wardell, S.E. (2010). The molecular mechanisms underlying the
 837 pharmacological actions of ER modulators: implications for new drug discovery in breast cancer.
 838 *Curr Opin Pharmacol* 10, 620-628.
 839 Merenbakh-Lamin, K., Ben-Baruch, N., Yeheskel, A., Dvir, A., Soussan-Gutman, L., Jeselsohn,
 840 R., Yelensky, R., Brown, M., Miller, V.A., Sarid, D., *et al.* (2013). D538G mutation in estrogen
 841 receptor-alpha: A novel mechanism for acquired endocrine resistance in breast cancer. *Cancer*
 842 *Res* 73, 6856-6864.
 843 Nettles, K.W., Bruning, J.B., Gil, G., Nowak, J., Sharma, S.K., Hahm, J.B., Kulp, K., Hochberg,
 844 R.B., Zhou, H., Katzenellenbogen, J.A., *et al.* (2008). NFkappaB selectivity of estrogen receptor
 845 ligands revealed by comparative crystallographic analyses. *Nat Chem Biol* 4, 241-247.
 846 Norris, J.D., Paige, L.A., Christensen, D.J., Chang, C.Y., Huacani, M.R., Fan, D., Hamilton,
 847 P.T., Fowlkes, D.M., and McDonnell, D.P. (1999). Peptide antagonists of the human estrogen
 848 receptor. *Science* 285, 744-746.

849 Ohno, S., Rai, Y., Iwata, H., Yamamoto, N., Yoshida, M., Iwase, H., Masuda, N., Nakamura, S.,
850 Taniguchi, H., Kamigaki, S., *et al.* (2010). Three dose regimens of fulvestrant in postmenopausal
851 Japanese women with advanced breast cancer: results from a double-blind, phase II comparative
852 study (FINDER1). *Annals of oncology : official journal of the European Society for Medical*
853 *Oncology / ESMO* 21, 2342-2347.

854 Paige, L.A., Christensen, D.J., Gron, H., Norris, J.D., Gottlin, E.B., Padilla, K.M., Chang, C.Y.,
855 Ballas, L.M., Hamilton, P.T., McDonnell, D.P., *et al.* (1999). Estrogen receptor (ER) modulators
856 each induce distinct conformational changes in ER alpha and ER beta. *Proc Natl Acad Sci U S A*
857 96, 3999-4004.

858 Perey, L., Paridaens, R., Hawle, H., Zaman, K., Nole, F., Wildiers, H., Fiche, M., Dietrich, D.,
859 Clement, P., Koberle, D., *et al.* (2007). Clinical benefit of fulvestrant in postmenopausal women
860 with advanced breast cancer and primary or acquired resistance to aromatase inhibitors: final
861 results of phase II Swiss Group for Clinical Cancer Research Trial (SAKK 21/00). *Annals of*
862 *oncology : official journal of the European Society for Medical Oncology / ESMO* 18, 64-69.

863 Pritchard, K.I., Rolski, J., Papai, Z., Mauriac, L., Cardoso, F., Chang, J., Panasci, L., Ianuli, C.,
864 Kahan, Z., Fukase, K., *et al.* (2010). Results of a phase II study comparing three dosing regimens
865 of fulvestrant in postmenopausal women with advanced breast cancer (FINDER2). *Breast cancer*
866 *research and treatment* 123, 453-461.

867 Puhalla, S., Bhattacharya, S., and Davidson, N.E. (2012). Hormonal therapy in breast cancer: a
868 model disease for the personalization of cancer care. *Molecular oncology* 6, 222-236.

869 Robertson, J.F., Nicholson, R.I., Bundred, N.J., Anderson, E., Rayter, Z., Dowsett, M., Fox, J.N.,
870 Gee, J.M., Webster, A., Wakeling, A.E., *et al.* (2001). Comparison of the short-term biological
871 effects of 7alpha-[9-(4,4,5,5,5-pentafluoropentylsulfinyl)-nonyl]estra-1,3,5, (10)-triene-3,17beta-
872 diol (Faslodex) versus tamoxifen in postmenopausal women with primary breast cancer. *Cancer*
873 *Res* 61, 6739-6746.

874 Robinson, D.R., Wu, Y.M., Vats, P., Su, F., Lonigro, R.J., Cao, X., Kalyana-Sundaram, S.,
875 Wang, R., Ning, Y., Hodges, L., *et al.* (2013). Activating ESR1 mutations in hormone-resistant
876 metastatic breast cancer. *Nat Genet* 45, 1446-1451.

877 Schiavon, G., Hrebien, S., Garcia-Murillas, I., Cutts, R.J., Pearson, A., Tarazona, N., Fenwick,
878 K., Kozarewa, I., Lopez-Knowles, E., Ribas, R., *et al.* (2015). Analysis of ESR1 mutation in

879 circulating tumor DNA demonstrates evolution during therapy for metastatic breast cancer. *Sci*
880 *Transl Med* 7, 313ra182.

881 Spoerke, J.M., Gendreau, S., Walter, K., Qiu, J., Wilson, T.R., Savage, H., Aimi, J., Derynck,
882 M.K., Chen, M., Chan, I.T., *et al.* (2016). Heterogeneity and clinical significance of ESR1
883 mutations in ER-positive metastatic breast cancer patients receiving fulvestrant. *Nature*
884 *communications* 7, 11579.

885 Takimoto, G.S., Graham, J.D., Jackson, T.A., Tung, L., Powell, R.L., Horwitz, L.D., and
886 Horwitz, K.B. (1999). Tamoxifen resistant breast cancer: coregulators determine the direction of
887 transcription by antagonist-occupied steroid receptors. *The Journal of steroid biochemistry and*
888 *molecular biology* 69, 45-50.

889 Toy, W., Shen, Y., Won, H., Green, B., Sakr, R.A., Will, M., Li, Z., Gala, K., Fanning, S., King,
890 T.A., *et al.* (2013). ESR1 ligand-binding domain mutations in hormone-resistant breast cancer.
891 *Nat Genet* 45, 1439-1445.

892 van Kruchten, M., de Vries, E.G., Glaudemans, A.W., van Lanschot, M.C., van Faassen, M.,
893 Kema, I.P., Brown, M., Schroder, C.P., de Vries, E.F., and Hospers, G.A. (2015). Measuring
894 Residual Estrogen Receptor Availability during Fulvestrant Therapy in Patients with Metastatic
895 Breast Cancer. *Cancer discovery* 5, 72-81.

896 Wardell, S.E., Ellis, M.J., Alley, H.M., Eisele, K., VanArsdale, T., Dann, S.G., Arndt, K.T.,
897 Primeau, T., Griffin, E., Shao, J., *et al.* (2015). Efficacy of SERD/SERM Hybrid-CDK4/6
898 Inhibitor Combinations in Models of Endocrine Therapy-Resistant Breast Cancer. *Clin Cancer*
899 *Res* 21, 5121-5130.

900 Wardell, S.E., Marks, J.R., and McDonnell, D.P. (2011). The turnover of estrogen receptor alpha
901 by the selective estrogen receptor degrader (SERD) fulvestrant is a saturable process that is not
902 required for antagonist efficacy. *Biochemical pharmacology* 82, 122-130.

903 Wardell, S.E., Nelson, E.R., Chao, C.A., and McDonnell, D.P. (2013). Bazedoxifene exhibits
904 antiestrogenic activity in animal models of tamoxifen-resistant breast cancer: implications for
905 treatment of advanced disease. *Clin Cancer Res* 19, 2420-2431.

906 Weir, H.M., Bradbury, R.H., Lawson, M., Rabow, A.A., Buttar, D., Callis, R.J., Curwen, J.O., de
907 Almeida, C., Ballard, P., Hulse, M., *et al.* (2016). AZD9496: An Oral Estrogen Receptor
908 Inhibitor That Blocks the Growth of ER-Positive and ESR1-Mutant Breast Tumors in Preclinical
909 Models. *Cancer Res* 76, 3307-3318.

Wijayaratne, A.L., and McDonnell, D.P. (2001). The human estrogen receptor-alpha is a ubiquitinated protein whose stability is affected differentially by agonists, antagonists, and selective estrogen receptor modulators. *J Biol Chem* 276, 35684-35692.

Wijayaratne, A.L., Nagel, S.C., Paige, L.A., Christensen, D.J., Norris, J.D., Fowlkes, D.M., and McDonnell, D.P. (1999). Comparative analyses of mechanistic differences among antiestrogens. *Endocrinology* 140, 5828-5840.

Willson, T.M., Henke, B.R., Momtahan, T.M., Charifson, P.S., Batchelor, K.W., Lubahn, D.B., Moore, L.B., Oliver, B.B., Sauls, H.R., Triantafillou, J.A., *et al.* (1994). 3-[4-(1,2-Diphenylbut-1-enyl)phenyl]acrylic acid: a non-steroidal estrogen with functional selectivity for bone over uterus in rats. *J Med Chem* 37, 1550-1552.

Willson, T.M., Norris, J.D., Wagner, B.L., Asplin, I., Baer, P., Brown, H.R., Jones, S.A., Henke, B., Sauls, H., Wolfe, S., *et al.* (1997). Dissection of the molecular mechanism of action of GW5638, a novel estrogen receptor ligand, provides insights into the role of estrogen receptor in bone. *Endocrinology* 138, 3901-3911.

ACKNOWLEDGEMENTS

We would like to thank Gina Wang, Jae Chung, Jun Liang, Tom O'Brien, Jim Kiefer and Melissa Junttila for helpful discussions and contributions during the preparation of the manuscript.

FUNDING

This work was supported by Seragon Pharmaceuticals,' Breast Cancer Specialized Program of Research Excellence (SPORE) P50 CA098131 (CLA), Vanderbilt-Ingram Cancer Center Support Grant P30 CA68485 (CLA), and Susan G. Komen for the Cure Foundation Grant SAC100013 (CLA).

935 **COMPETING INTERESTS**

936 JDJ, BD, SPG, AGL, MK, DB, JS, NL, GS, JQ, KG, MM, RP, EB, K-JL, CB, KLD, JDJ, JYN,
937 AA, JK, RAH, ECM, PJR, NDS and JHH were shareholders of Seragon. WZ, KW, ZG, RB, LK,
938 BH, IEW, MRL, LF and CM are employed by Genentech and own shares.

939

940

941

942

943

944

945

946

947

948

949

950

951

952

FIGURES

Figure 1. GDC-0810 induces proteasome-dependent degradation of ER α and suppresses proliferation of MCF7 cells. **(A)** GDC-0810 structure. **(B)** MCF7 ER α In-Cell Western assay comparing GDC-0810 potency to fulvestrant and 4-hydroxytamoxifen. ER α levels are quantified by immunofluorescence assay, in triplicate, 4-hours post compound treatment. Error bars are SEM. **(C)** Western blot analysis assessing the effect of GDC-0810 (100 nM), and fulvestrant (100 nM) **(D)** on ER α levels at 2, 4 or 6 hours of treatment, in the presence or absence of the 26S proteasome inhibitor MG132 (10 μ M). **(E)** MCF7 cell viability assay comparing GDC-0810 activity to fulvestrant and 4OH-tamoxifen, in the absence of exogenous estradiol. Viable cells are presented as percent CellTiter-Glo luciferase activity relative to the vehicle control after 5 day compound incubation. Error bars represent standard deviation from the mean, from biological quadruplicates. **(F)** MCF7 cell viability assay comparing GDC-0810 activity to fulvestrant and 4OH-tamoxifen, in the presence of 0.1nM estradiol. Viable cells are presented as percent CellTiter-Glo luciferase activity relative to the vehicle control after 5 day compound incubation.

Figure 1 - figure supplement 1. MCF7 ER α In-Cell Western assay correlates with MCF7 western blot for most ER binders. The average In-Cell Western E_{\max} activity for GDC-0810 and ER α benchmark antagonists are plotted versus the average ligand induced ER α degradation induced by 20 hour treatment with 1 μ M ligand performed in duplicate. For In-Cell Western assays $n \geq 2$.

Figure 2. GDC-0810 promotes an ER confirmation distinct from 4OH-tamoxifen and fulvestrant. **(A)** ER α conformational profiling. A mammalian 2-hybrid assay was performed to monitor interaction of ER α with 14 conformation selective peptide probes. Luciferase signal was measured after 24 hours of compound treatment (1 μ M for all compounds). Interaction profiles of ER α therapies, GDC-0810 and vehicle control from biological triplicates were analyzed by hierarchical clustering using the Ward algorithm and standardized data. **(B)** Transcriptional activity of benchmark ER α ligands in MCF7 cells, in the absence of exogenous estrogen. Transcriptional activity was monitored using a SERM discriminatory target gene set following 24 hour 1 μ M ligand treatment. Data was log2 normalized followed by standardization and hierarchical clustering. **(C)** Doxycycline-inducible MCF7 cells were pre-

cultured in estrogen-depleted medium with 100 ng/ml doxycycline for 2 weeks. Cells were then cultured in medium containing 10, 100 and 500nM fulvestrant or GDC-0810 for 5 days, and the effect on levels of ER, PR and Cyclin D1 were assessed by Western Blot analysis. **(D, E)** Doxycycline-inducible MCF7 cells were pre-cultured in estrogen-depleted medium with 10 ng/ml doxycycline for 2 weeks before treatment. Cells were treated with a range of doses of fulvestrant or GDC-0810 for 7 days in estrogen-depleted medium with or without 0.1nM E2. Cell viability was determined by CellTiter-Glo assay.

Figure 2 – figure supplement 1. GDC-0810 does not promote the binding of ER α to known ER target sites. ER α ChIP was performed on MCF7 cells following 45 minute or 4 hour compound incubation. qPCR quantification was performed using oligonucleotides directed to 10 distinct ER α binding sites. Data for ER α and non-specific IgG control is plotted as a percent of total input.

Figure 3: GDC-0810 displays mild estrogenic activity in vitro and in vivo. **(A)** Alkaline phosphatase activity in Ishikawa endometrial cells stimulated with increasing concentrations of either 4OH-tamoxifen, GDC-0810 or fulvestrant, in the absence of estrogen. **(B)** Uterine wet weight (UWW) measurements from juvenile rats treated with individual specified ER ligands; 17 α -estradiol was dosed at 0.1 mg/kg as a positive control. **(C)** Haematoxylin and eosin (H&E) staining, and anti-ER IHC were performed on tissues dissected as in B. **(D)** Endometrial cell height was digitally measured from the basement membrane to the apical (luminal) surface, using a digitally scanned image at 20X magnification. Three digital measurements were taken from each section, and 2 mice per condition were scored. Results are displayed as the mean endometrial cell height from two animals +/- standard error (n=2). **(E)** Gene expression in the uterus, after treatment with indicated compounds, was assessed using a rat Fluidigm panel. **(F)** H-scores were used to quantify the ER IHC from (C). H-scores were estimated manually, incorporating both intensity and percentage of positive nuclei, using the following formula: (0 x %negative)+(1 x %weak)+(2 x %moderate)+(3 x %strong) * Denotes significance (p < 0.05) compared to Vehicle in 1-Way ANOVA and Dunnett's Multiple Comparison Test.

Figure 4. Antitumor activity and pharmacodynamic response of GDC-0810 in tamoxifen-sensitive breast cancer xenograft models. **(A)** Tamoxifen-sensitive MCF7 tumor bearing animals

were dosed with vehicle, fulvestrant (50 mg/kg on days 1, 3, 8; then 25 mg/kg 2x/week, s.c.) or GDC-0810 (1, 10, 100 mg/kg/day, p.o.) for 28 days in the presence of 60-day release 0.36 mg 17 β -estradiol pellets. **(B, C)** Gene expression analysis of tumors treated with 100 mg/kg GDC-0810, compared to tumors in the presence or absence of estrogen pellets. Tumors were harvested on day 28 of the study; this was a separate study from that shown in (A). GDC-0810 plasma concentration is also shown. * $p < 0.05$, $n = 3$. See Figure 3 – figure supplement 1B for an extended panel of genes. **(D)** Representative FES-PET images of MCF7 tumors in the right dorsum (arrow) of mice treated with vehicle or GDC-0810 (100 mg/kg). Images were taken 1-2 hours after the dosing on the 7th day of treatment. **(E)** Percent change in FES SUVR after 6 days of treatment. Each bar represents the mean percent change in ¹⁸F-labeled estradiol SUVR. Vehicle-treated mice exhibited an average increase of SUVR of 26.1% whereas mice treated with 10 mg/kg and 100 mg/kg exhibited a 45.2% and 63.3% reduction in SUVR, respectively, compared to baseline (* $p < 0.0001$ vs. vehicle). **(F)** HCI-003 patient derived xenograft tumors were implanted in mice containing a 1 mg 17 β -estradiol beeswax pellet. Tumor bearing animals were dosed with vehicle, fulvestrant (200 mg/kg, 3x/week, s.c.), GDC-0810 (10 or 100 mg/kg/day, p.o.) for 43 days. One vehicle treated group had the 17 β -estradiol pellets removed at treatment start to assure growth dependence on estradiol.

Figure 4 – figure supplement 1. MCF7, HCI-003 and ZR-75-1 breast cancer xenograft models. **(A)** Tamoxifen and fulvestrant anti-tumor activity in MCF7 xenograft. Crl:NU-Foxn1^{nu} mice implanted with 17- β Estradiol pellets (0.72mg/pellet/60 days, Innovative Research of America) were injected with 1×10^7 MCF7 cells. 8 days later, animals bearing viable tumors were dosed orally with Vehicle (9% Peg-400:0.5% Tween-80:0.5% Povidone:90% 0.5% Carboxymethylcellulose) or tamoxifen (60mg/kg/day), or subcutaneously with fulvestrant (200mg/kg, 3x/week, 10% ETOH:Castor Oil) for 28 days. * Denotes significance ($p < 0.05$) compared to Vehicle (+E2) in 1-Way ANOVA and Dunnett's Multiple Comparison Test. **(B)** Gene expression analysis, assessed using Fluidigm, of MCF7 tumors treated with GDC-0810, 100 mg/kg/day, p.o., on day 28, compared to tumors grown in the presence and absence of estrogen pellets at the same timepoint, $n = 3$. **(C)** Tamoxifen and fulvestrant display anti-tumor activity in the patient derived tumor, HCI-003. NOD.CB17-Prkdc^{scid}/NcrCrl mice were implanted with HCI-003 tumor fragments and estradiol impregnated beeswax pellets. Animals were ovariectomized 19 days after fragment implant. Animals with viable tumors were dosed orally with Vehicle (9% Peg-400:0.5% Tween-80:0.5% Povidone:90% 0.5% Carboxymethylcellulose), tamoxifen (60mg/kg/day), or fulvestrant (200mg/kg 3x/week) for 38 days. Estradiol pellets were removed from one group of animals on the first

day of dosing to serve as a control for estradiol dependence for cell growth (Vehicle (-E2)). For all graphs * denotes significance ($p < 0.05$) compared to Vehicle (+E2) in 1-Way ANOVA and Dunnett's Multiple Comparison Test. **(D)** GDC-0810 displayed anti-tumor activity in ZR75-1 ER+ breast cancer tumors. Crl:NU-Foxn1^{nu} mice implanted with 17- β Estradiol pellets (0.72mg/pellet/60 days, Innovative Research of America) were injected with 5×10^6 ZR-75-1 cells. 21 days later, animals bearing viable tumors were dosed orally with Vehicle (9% Peg-400:0.5% Tween-80:0.5% Povidone:90% 0.5% Carboxymethylcellulose), tamoxifen (60mg/kg/day), or GDC-0810 (100mg/kg/day) for 28 days. Estradiol pellets were removed from one group of animals on the first day of dosing to serve as a control for estradiol dependence for cell growth [Vehicle (-E2)]. * Denotes significance ($p < 0.05$) compared to Vehicle (+E2) in 1-Way ANOVA and Dunnett's Multiple Comparison Test.

Figure 4 – figure supplement 2. Activity of GDC-0810 in MCF7 xenograft tumors analyzed by FES-PET. **(A)** MCF7 cells were injected s.c. into athymic ovariectomized mice supplemented with a 14-day release, 0.17-mg 17 β -estradiol pellets. Four weeks later, mice bearing tumors $\geq 250 \text{ mm}^3$ were randomized to treatment with vehicle, GDC-0810 10 mg/kg/day or 100 mg/kg/day (p.o.) for 9 days (* $p < 0.01$ vs. vehicle, ** $p < 0.005$ vs. vehicle). **(B)** Left panel: Representative images of IHC for ER α and PR in mice treated with vehicle or GDC-0810. Scale bars: 200 μm . Right panel: Quantitative histoscores from tumors in left panel (H-score; * $p < 0.05$, ** $p < 0.005$). Each bar: mean \pm SEM.

Figure 4 – figure supplement 3. Pharmacodynamic activity of GDC-0810 and fulvestrant in HCI-003 xenograft tumors. **(A)** ER target gene transcription was analyzed in tumors 8 hours after the final treatment on day 43. qRT-PCR data from individual tumors [3 for Vehicle (+E2), Vehicle (-E2), and GDC-0810 10 and 100 mg/kg/day and 2 for Fulvestrant 200 mg/kg 3x/week] was normalized to the average of the Vehicle (+E2) treatment group and log2 transformed. **(B)** ER α protein levels were determined by western blot analysis of tumors 8 hours following the final compound treatment on day 43. ER α levels were normalized to α -tubulin and normalized to the average of the Vehicle (+E2) group. Data is presented as average of treatment group [3 for Vehicle (+E2), 5 for Vehicle (-E2), 4 for fulvestrant 200 mg/kg 3x/week and GDC-0810 100 mg/kg/day and 3 for GDC-0810 10 mg/kg/day]. Error is standard deviation. * Denotes significance ($p < 0.05$) compared to Vehicle in 1-Way ANOVA and Dunnett's Multiple Comparison Test.

Figure 4 –figure supplement 4. GDC-0810 is not efficacious in MDA-MB-231, an ER negative human breast cancer tumor model. Crl:NU-Foxn1^{nu} mice injected with 5×10^6 MDA-MB-231 cells were dosed orally with Vehicle (9% Peg-400:0.5% Tween-80:0.5% Povidone:90% 0.5% Carboxymethylcellulose),

tamoxifen (60mg/kg/day), GDC-0810 (100mg/kg/day), or subcutaneously with fulvestrant (200mg/kg, 3 times per week, 10% ETOH:Castor Oil) for 29 days.

Figure 5. Antitumor activity of GDC-0810 in a tamoxifen-resistant breast cancer xenograft model. **(A)** Tamoxifen-resistant MCF7 tumors were implanted in animals supplemented with 60-day release 0.18 mg 17 β -estradiol pellets. Tumor bearing animals were dosed with vehicle, tamoxifen (120 mg/kg/day p.o.), fulvestrant (200 mg/kg, 3x/week, s.c.) or GDC-0810 (10, 30 or 100 mg/kg/day, p.o.) for 27 days **(B)** Representative images of IHC for ER α and Ki67 in tamoxifen-resistant MCF7 xenograft tumors from (A) treated with vehicle, tamoxifen or GDC-0810. **(C)** Quantitative PCR analysis of ER-regulated genes in tamoxifen-resistant MCF7 xenograft tumors from (A), treated with vehicle, fulvestrant or GDC-0810. S.c. is sub-cutaneous dosing, and p.o. is per os (by mouth) oral gavage dosing. * Denotes significance (p < 0.05) compared to Vehicle in 1-Way ANOVA and Dunnett's Multiple Comparison Test.

Figure 5 – figure supplement 1. Effects of estradiol pellet on ER α levels in MCF7-TamR1 xenograft tumors. TamR1 tumor fragments were implanted into Crl:NU-Foxn1^{nu} mice implanted with either 0.72 or 0.18 mg/60 day 17- β estradiol pellets. Once tumors were established pellets were removed from 1 group. 28 days after pellet removal ER α protein levels were determined for 4 tumors from each group. Data is presented as average compared to Vehicle (-E2). Error is standard deviation. * Denotes significance (p < 0.05) compared to Vehicle (-E2) by T-test.

Figure 5 – figure supplement 2. Pharmacodynamic activity of GDC-0810 in MCF7-TamR1 xenograft tumors. **(A)** ER α protein levels were determined by western blot analysis of tumors 8 hours following the final compound treatment on day 27. ER α levels were normalized to α -tubulin and normalized to the average of the Vehicle (+E2) group. Data is presented as average of treatment group [4 tumors each for Vehicle (+E2), Vehicle (-E2), and fulvestrant 200 mg/kg 3x/week and 3 for GDC-0810 10, 30 and 100 mg/kg/day]. Error is standard deviation. * Denotes significance (p < 0.05) compared to Vehicle in 1-Way ANOVA and Dunnett's Multiple Comparison Test. **(B).** KI-67 expression, quantified from IHC analysis.

Figure 6. GDC-0810 antagonizes the estrogen-independent ER.Y537S mutant **(A)** A cell free, FRET-based E2 competitive binding assay (E2 present at EC80) was used to determine the binding of GDC-0810 to ER.WT, ER.Y537S and ER.D538G ligand binding domains. Shown are the IC50 values calculated from multiple independent experiments, with mean and standard

deviation indicated **(B)** A cell free, FRET-based PGC1 α recruitment assay was used to evaluate the effect of GDC-0810 on ER:PGC1 α interaction in the presence of agonist (EC80), using either purified wild-type or mutant ER α ligand binding domains (LBD). Shown are the IC50 values calculated from multiple independent experiments, with mean and standard deviation indicated. **(C)** Quantitative RT-PCR analysis of ER-regulated genes from CRISPR-Cas9 engineered ER.Y537S cells, in the absence and presence of estrogen, highlighting the E2 independent pathway activity of MCF7 cells expressing ER.Y537S. **(D)** Cell viability assays, measuring the effect of GDC-0810, were performed on MCF7 ER.WT (black lines) and ER.Y537S (blue lines) cells, in the absence (solid lines) and presence (dotted lines) of estrogen. **(E)** Western blot analysis evaluating levels of ER α , as well as PR and cyclin D1 as ER targets, in ER.WT and ER.Y537S cells. Cells were treated with GDC-0810 for 24 hours.

Figure 6 – figure supplement 1. Characterization of MCF7 ER.Y537S knock-in cells. **(A)** Schematic detailing the strategy to engineer the ER.Y537S mutation into the endogenous ESR1 locus in MCF7 cells. **(B)** Y537S-specific ddPCR on genomic DNA was used to evaluate the mutant allele frequency in 24 independent knock-in clones. **(C)** Expression of the mutant allele was evaluated in 7 clones, as well as in the WHIM20 PDX model by performing Y537S-specific ddPCR on cDNA. **(D)** The effect of GDC-0810 on the viability of MCF7 ER.WT and multiple MCF7 ER.Y537S clones in the absence of estrogen; all mutant clones exhibit a similar right shift relative to ER.WT cells. **(E)** The effect of fulvestrant on cell viability was compared across MCF7 ER.WT (black lines) and ER.Y537S (blue lines) cells in the absence (solid lines) and presence (dotted lines) of estrogen. **(F)** Western blot analyses were performed on ER.WT and ER.Y537S cells in the presence and absence of fulvestrant and estrogen. Cells were harvested 24 hours after drug administration. **(G)** The effect of 4OH-tamoxifen on cell viability was compared across MCF7 ER.WT (black lines) and ER.Y537S (blue lines) cells in the absence (solid lines) and presence (dotted lines) of estrogen. **(H)** Western blot analyses were performed on ER.WT and ER.Y537S cells in the presence and absence of 4OH-tamoxifen and estrogen. Cells were harvested 24 hours after drug administration.

Figure 7. GDC-0810 exhibits activity in T47D ER.D538G knock-in cells. **(A)** Western blot analysis of T47D ER.WT and ER.D538G cells in the presence and absence of estrogen. **(B)** Cell viability assays of GDC-0810 activity in ER.WT and ER.D538G cells. **(C)** Representative images of T47D ER.WT (red) and ER.D538G (green) cells, grown under specified conditions. Wells, in which cells had been plates at a 1:1 ratio on day 1, were imaged on a regular basis to enable quantification of ER.WT/red vs. ER.D538G/green cells over time. **(D)** Quantification of cell competition experiments in which labeled

T47D.WT cells (red), were mixed at a 1:1 ratio with labeled T47D.D538G cells (green), and grown in the presence and absence of estrogen and GDC-0810. 4 images per condition were quantified. (E) Cell counts for ER.WT cells grown alone or in the presence of ER.D538G cells.

Figure 8. GDC-0810 antagonizes estrogen-independent ER.Y537S-expressing tumors in vivo. (A). MCF7 HA-ER.Y537S overexpressing tumors were implanted in animals without supplemental 17 β -estradiol pellets. Tumor bearing animals were dosed with vehicle, tamoxifen (60mg/kg/day p.o.), fulvestrant (200 mg/kg, 3x/week, s.c.) or GDC-0810 (100 mg/kg/day, p.o.) for 28 days. (B) Gene expression analysis of WHIM20 tumors after 4 days of dosing, harvested 8 hours after the final dose. (C) Western blot and quantification of ER levels by RPPA, assessing the effect of GDC-0810 and fulvestrant on ER and PR levels in the WHIM20 PDX model. (D) Representative IHC images of WHIM20 tumors treated with either vehicle, fulvestrant or GDC-0810 and probed using anti-ER, anti-PR, or anti-Ki67 antibodies. (E) WHIM20 tumors were implanted in mice without supplemental 17 β -estradiol pellets. Upon reaching ~200mm³, tumor bearing animals were dosed with vehicle, tamoxifen (60 mg/kg/day p.o.), fulvestrant (50 mg/kg, days 1, 3 and 8, 25 mg/kg 1x/week thereafter, s.c.) or GDC-0810 (100 mg/kg/day, p.o.) for 35 days. * Denotes significance (p < 0.05) compared to Vehicle in 1-Way ANOVA and Dunnett's Multiple Comparison Test.

Table 1. In vitro properties of GCD-0810

Compound	ER Binding ^a		Transcription ^b		Cell Viability ^c		ER α Degradation ^d	
	ER α	ER β	3X ERE~LUC		CellTiter-Glo		In-Cell Western	
	K _i [nM]		IC ₅₀ [nM]	E _{max} [% E2]	IC ₅₀ [nM]	E _{max} [% E2]	EC ₅₀ [nM]	E _{max} [% Veh.]
GDC-0810	3.8 \pm 1.6	3.7 \pm 4.0	1.3 \pm 0.8	6.1 \pm 2.8	2.5 \pm 2.1	24.6 \pm 3.3	0.65 \pm 0.50	15.3 \pm 3.4
4-OH Tam	2.2 \pm 1.3	3.6 \pm 1.7	6.7 \pm 3.6	4.7 \pm 2.9	0.53 \pm 0.25	48.0 \pm 4.7	0.14 \pm 0.04	51.9 \pm 2.7*
Fulvestrant	13.1 \pm 10.8	13.2 \pm 7.6	0.3 \pm 0.2	4.1 \pm 2.6	0.56 \pm 0.70	25.4 \pm 3.7	0.39 \pm 0.18	6.4 \pm 2.0

^a Binding affinities (K_i) of GDC-0810, 4-hydroxytamoxifen (4-OHT), and fulvestrant for ER α and ER β . Shown are the mean and standard deviation of 3-4 experiments run in duplicate.

^b ER α antagonist reporter assay. Results are the mean and standard deviation of 3 experiments.

^cRelative cell viability after 5 d incubation with compound. Shown are the mean and standard deviation of more than 50 assays run in triplicate.

^dRelative ER α immunofluorescence activity in MCF7 In-Cell Western. *The apparent reduction in ER α immunoreactivity is not reproduced in western blots.

APPENDIX

DNA and Plasmids

3X ERE TK-luciferase, ER α -VP16, MH100-Luciferase, pCMX-Gal4 SRC1, and pCDNA-ER α plasmids were provided by Dr. David Mangelsdorf. MMTV-Luciferase was provided by Dr. Charles Sawyers. Gal4-ER interacting peptide expression constructs were generated by subcloning annealed oligonucleotides encoding the following peptides TIF2 (676-702). RIP140(922-946), EA2, α / β I, K7P2, GW5P2,, 47P3, BN2, α 2, BL2, TA1, α / β V, and α / β III into pCMX-Gal4 (provided by Dr. David Mangelsdorf). 2X PRE-Luciferase was created by subcloning 2 consensus PRE sequences (GTAGCTAGAACATCCTGTACA) into pGL4.26 (Promega). pCMX PRa was generated by subcloning full-length PRa into pCMX. pCDNA PRb was generated by cloning full-length human PRb into pCDNA. 6R MR and pCDNA3 GR were provided by Dr. Beatrice Darimont. pRL-CMV was purchased from Promega. pCMV-hspCas9-nickase-H1-gRNA and pCDH-EF1-MCS-(PGK-Puro) were purchased from System Biosciences.

Binding Assays

ER α and ER β Competitive Binding Assay

Full length estrogen receptor α or β (Life Technologies) was diluted in TEGM buffer (10mM Tris-HCl, 1mM EDTA, 10% glycerol, 1mM beta-mecaptoethanol, 10mM Sodium Molybdate, pH 7.2, 0.04% NP-40) to a final concentration of 2.5 nM or 2 nM, respectively, combined with compound, 1.5 nM ³H Estradiol [2,4,6,7-3H(N)]- (Perkin Elmer), and incubated overnight at 4°C. The reaction was bound under vacuum to a Unifilter-96 GF/C filter plate had been pre-wetted with 0.5% poly-ethyleneimine. The plate was washed with wash buffer (40mM Tris pH7.5, 100mM KCl, 1mM EDTA, 1mM EGTA) and dried. Microscint-20 (Perkin Elmer) liquid scintillation counter cocktail was added to the filter plate, which was sealed with TopSeal-A

adhesive sealing tape (Perkin Elmer), and the reactions were counted in a TopCount NXT Microplate Scintillation and Luminescence Counter (Perkin Elmer). Counts per minute were obtained and percent binding was determined ($\text{cpm ER} + \text{compound} / \text{cpm ER-compound} \times 100$) and plotted against the compound concentration in order to obtain the IC₅₀ for each compound using GraphPad Prism. K_i was calculated according to Cheng-Prusoff (Cheng and Prusoff, 1973) as $K_i = \text{IC}_{50} / (1 + ([3\text{H-E2}] / K_d))$, $[3\text{H-E2}] = 1.5 \text{ nM}$.

AR Competitive Binding Assay

MDA-MB-453 cells (ATCC) were cultured in RPMI 1640 containing 20 mM Hepes, 4 mM L-Glutamine, 10 µg/mL human Insulin, 10% FBS and 20 µg/mL Gentamicin. After reaching 90% confluence, cells were harvested, resuspended in TEGM (10 mM TrisHCl pH 7.2, 1 mM EDTA, 10% glycerol, 1 mM β-mercaptoethanol, 10 mM Sodium Molybdate), and frozen in liquid nitrogen in 10 mL aliquots containing 2×10^7 cells/mL. Binding reactions (60 µL) were carried out in 96-well plates in TEGM, and typically contained 24 µL cell lysate, 0.6 nM ³H-R1881 (Perkin Elmer), 3×10^{-10} to 3×10^{-5} M of the respective competitive ligand, and 10^{-11} to 10^{-6} M of the control ligand (R1881). Reactions were incubated at 4°C overnight. Bound and unbound ligands were separated by ultrafiltration using a Unifilter-96 GF/C filter plate (Perkin Elmer). Bound ³H-R1881 was eluted in 30 µL/well Microscint-20 and quantified using a scintillation counter (Top Count).

GR Competitive Binding Assay

The binding affinities of SRN-927 and comparators to GR were determined using competitive radiometric binding experiments. Reactions were conducted in 96-well plates in TEGM (10 mM Tris-HCl pH 7.2, 1 mM EDTA, 10% glycerol, 1 mM β-mercaptoethanol, 10 mM sodium molybdate). Each reaction (60 µL) contained 2.0 nM GR, 3.0 nM ³H-dexamethasone (Perkin Elmer), and 3×10^{-10} to 3×10^{-5} M of the respective competitive ligand (SRN-927, 4-hydroxytamoxifen, or fulvestrant), or 10^{-11} to 10^{-6} M of the control ligand (dexamethasone). All reactions were set up in duplicates and incubated at 4°C overnight. Receptor-bound ³H-DEX was isolated by ultrafiltration using a Unifilter-96 GF/C filter plate (Perkin Elmer), eluted in 30 µL Microscint-20 and quantified using a scintillation counter (Top Count).

ERα Conformational Profiling Assay

1219 HEK-293T cells were maintained in DMEM supplemented with 10% FBS. Conformational
1220 profiling assays were performed by seeding 100 μ L of cells at a density of 250,000 cells/mL into
1221 96-well cell culture plates in phenol red free DMEM, supplemented with 5% charcoal-stripped
1222 serum. After the cells were allowed to attach overnight, cells were transiently transfected using
1223 Lipofectin (Life Technologies). Triplicate transfections were performed using 150 ng MH100-
1224 Luciferase (Gal-4 responsive luciferase reporter), 130 ng pVP16-ER α (VP16-ER α expression
1225 vector), 150 ng pCMX-Gal4-peptide (Gal4-ER α interacting peptide expression vector), 50 ng
1226 pRL-CMV (normalization vector) and 0.6 μ L lipofectin. Transfected cells were incubated
1227 overnight then treated with ligand.

1228 Compounds, at a single saturating dose of 1 μ M, were diluted in phenol red free DMEM
1229 supplemented with charcoal stripped serum to 12 μ M and 10 μ L was added to the cells.
1230 Following 24 hour incubation, the medium was removed and the cells were lysed in 40 μ L of
1231 lysis buffer (25 mM Tris Phosphate, 2 mM CDTA, 10% Glycerol, 0.5% Triton X-100, and 2 mM
1232 DTT).

1233 Firefly luciferase activity was measured immediately following the addition of 40 μ L luciferase
1234 buffer (20 mM tricine, 0.1 mM EDTA, 1.07 mM (MgCO₃)₄ Mg(OH)₂ • 5H₂O, 2.67 mM MgSO₄,
1235 33.3 mM DTT, 270 μ M Coenzyme A, 470 μ M luciferin, 530 μ M ATP). Renilla luciferase was
1236 measured following the addition of 40 μ L coelenterazine buffer (1.1 M NaCl, 2.2 mM
1237 Na₂EDTA, 0.22 M K₃PO₄ (pH 5.1), 0.44 mg/mL BSA, 1.3 mM NaN₃, 1.43 μ M coelenterazine,
1238 final pH adjusted to 5.0). Luminescence was measured immediately following reagent addition
1239 using either Perkin Elmer EnVision 2103™ Multilabel Reader. Luminescence activity was
1240 normalized by dividing firefly luciferase activity by Renilla luciferase activity. Data was
1241 standardized and hierarchical clustered with the Ward algorithm using JMP8 (SAS).

1242

1243 **Reporter Assays**

1244 **MCF7 Transcriptional Reporter Assay**

1245 ER α transcriptional reporter activity was monitored in MCF7 cells without transfection of
1246 supplemental ER. MCF7 cells were maintained in RPMI 1640 supplemented with 10% FBS.
1247 Transcriptional assays were performed by seeding 100 μ L of cells at a density of 250,000

1248 cells/mL into 96-well cell culture plates in phenol red free RPMI 1640 supplemented with 5%
1249 charcoal stripped serum and allowed to attach overnight. Cells were transiently transfected using
1250 Lipofectin (Life Technologies). Triplicate transfections were performed using 210 ng 3X ERE-
1251 TK-Luc (reporter vector), 30 ng pRL-CMV (normalization vector) and 0.6 μ L lipofectin.
1252 Transfected cells were incubated overnight then treated with ligand.

1253 For ER agonist assays, the compounds were serially diluted and 50 μ L of compound plus RPMI
1254 1640 supplemented with charcoal stripped serum was added to the cells. For ER antagonist
1255 assays, the compounds were serially diluted and 50 μ L of compound with RPMI plus 17 β -
1256 estradiol supplemented with charcoal stripped serum were added to the cells. The final 17 β -
1257 estradiol concentration used in the antagonist assays was 0.1 nM. Following 24 hour incubation
1258 the medium was removed and the cells were lysed in 40 μ L of lysis buffer (25 mM Tris
1259 Phosphate, 2 mM CDTA, 10% Glycerol, 0.5% Triton X-100, 2 mM DTT).

1260 Firefly luciferase activity was measured immediately following the addition of 40 μ L luciferase
1261 buffer (20 mM tricine, 0.1 mM EDTA, 1.07 mM (MgCO₃)₄ Mg(OH)₂ • 5H₂O, 2.67 mM MgSO₄,
1262 33.3 mM DTT, 270 μ M Coenzyme A, 470 μ M luciferin, 530 μ M ATP). Renilla luciferase was
1263 measured following the addition of 40 μ L coelenterazine buffer (1.1 M NaCl, 2.2 mM
1264 Na₂EDTA, 0.22 M K₃PO₄ (pH 5.1), 0.44 mg/mL BSA, 1.3 mM NaN₃, 1.43 μ M coelenterazine,
1265 final pH adjusted to 5.0). Relative luminescence was measured immediately following reagent
1266 addition using either Perkin Elmer EnVision 2103™ Multilabel Reader or Molecular Devices
1267 Analyst™ GT Multimode Reader.

1268

1269 **ER β Transcriptional Reporter Assay**

1270 HEK-293T cells were maintained in DMEM supplemented with 10% FBS. Transcriptional
1271 assays were performed by seeding 100 μ L of cells at a density of 250,000 cells/mL into 96-well
1272 cell culture plates in phenol red free DMEM supplemented with 5% charcoal stripped serum and
1273 allowed to attach overnight. Cells were transiently transfected using Lipofectin (Life
1274 Technologies). Triplicate transfections were performed using 25 ng pCMX ER- β , 210 ng 3X
1275 ERE-TK-Luc (reporter vector), 30 ng pRL-CMV (normalization vector) and 0.6 μ L lipofectin.
1276 Transfected cells were incubated overnight then treated with ligand.

For ER agonist assays, the compounds were serially diluted and 50 μ L of compound plus DMEM supplemented with charcoal stripped serum was added to the cells. For ER antagonist assays, the compounds were serially diluted and 50 μ L of compound with DMEM plus 17 β -estradiol supplemented with charcoal stripped serum were added to the cells. The final 17 β -estradiol concentration used in the antagonist assays was 1 nM. Following 24 hour incubation the medium was removed and the cells were lysed in 40 μ L of lysis buffer (25 mM Tris Phosphate, 2 mM CDTA, 10% Glycerol, 0.5% Triton X-100, 2 mM DTT).

Firefly luciferase activity was measured immediately following the addition of 40 μ L luciferase buffer (20 mM tricine, 0.1 mM EDTA, 1.07 mM (MgCO₃)₄ Mg(OH)₂ • 5H₂O, 2.67 mM MgSO₄, 33.3 mM DTT, 270 μ M Coenzyme A, 470 μ M luciferin, 530 μ M ATP). Renilla luciferase was measured following the addition of 40 μ L coelenterazine buffer (1.1 M NaCl, 2.2 mM Na₂EDTA, 0.22 M K₃PO₄ (pH 5.1), 0.44 mg/mL BSA, 1.3 mM NaN₃, 1.43 μ M coelenterazine, final pH adjusted to 5.0). Relative luminescence was measured immediately following reagent addition using either Perkin Elmer EnVision 2103™ Multilabel Reader or Molecular Devices Analyst™ GT Multimode Reader.

PR-A, PR-B, and MR Transcriptional Reporter Assays

HEPG2 cells were maintained in RPMI 1640 supplemented with 10% FBS. Transcriptional assays were performed by seeding 100 μ L of cells at a density of 250,000 cells/mL into 96-well cell culture plates in RPMI 1640 supplemented with 5% charcoal-stripped serum and allowed to attach overnight. Cells were transiently transfected using Lipofectin (Life Technologies). Triplicate transfections were performed using 418 ng reporter vector (2X PRE-Luciferase for PR-A and PR-B, MMTV-Luciferase for MR), 50 ng CMVpRL (normalization vector), 10 ng NHR expression vector (CMX-PR-A, pCDNA-PR-B or 6R-MR), and 0.7 μ L lipofectin. Transfected cells were incubated overnight then treated with ligand. For agonist assays, the compounds were serially diluted and 50 μ L of compound plus RPMI 1640 supplemented with charcoal-stripped serum was added to the cells. For antagonist assays, the compounds were serially diluted and 50 μ L of compound with RPMI plus 3 nM of the appropriate agonist (R-5020 for PR and aldosterone for MR) supplemented with charcoal-stripped serum were added to the cells. The final agonist concentration used in the antagonist assays was 1 nM. Following

24 hour incubation, the medium was removed and the cells were lysed in 40 μ L of lysis buffer (25 mM Tris Phosphate, 2 mM CDTA, 10% Glycerol, 0.5% Triton X-100, 2 mM DTT). Firefly luciferase activity was measured immediately following the addition of 40 μ L luciferase buffer (20 mM tricine, 0.1 mM EDTA, 1.07 mM $(\text{MgCO}_3)_4 \text{Mg}(\text{OH})_2 \cdot 5\text{H}_2\text{O}$, 2.67 mM MgSO_4 , 33.3 mM DTT, 270 μ M Coenzyme A, 470 μ M luciferin, 530 μ M ATP). Renilla luciferase was measured following the addition of 40 μ L coelenterazine buffer (1.1 M NaCl, 2.2 mM Na_2EDTA , 0.22 M K_3PO_4 (pH 5.1), 0.44 mg/mL BSA, 1.3 mM NaN_3 , 1.43 μ M coelenterazine, final pH adjusted to 5.0). Relative luminescence was measured immediately following reagent addition using either the Perkin Elmer EnVision 2103™ Multilabel Reader or Molecular Devices Analyst™ GT Multimode Reader.

GR Transcriptional Reporter Assays

CV1 cells were maintained in MEM supplemented with 10% FBS. Transcriptional assays were performed by seeding 12 mL of cells at a density of 250,000 cells/mL into a T-75 cell culture flask in MEM supplemented with 5% charcoal-stripped serum and allowed to attach overnight. Cells were transiently transfected using FuGENE® 6 (Roche Applied Science). Bulk transfections were performed using 1250 ng reporter vector (MMTV-Luciferase), 225 ng pRL-CMV (normalization vector), 25 ng pCDNA3-GR vector, and 75 μ L FuGENE® 6. Transfected cells were incubated overnight then split into four 96-well tissue culture plates and incubated for 4 hours followed by compound addition. For agonist assays, the compounds were serially diluted and 50 μ L of compound plus MEM supplemented with charcoal-stripped serum was added to the cells. For antagonist assays, the compounds were serially diluted and 50 μ L of compound with MEM plus 30 nM dexamethasone supplemented with charcoal-stripped serum were added to the cells. The final agonist concentration used in the antagonist assays was 10 nM. Following 24 hour incubation, the medium was removed and the cells were lysed in 40 μ L of lysis buffer (25 mM Tris Phosphate, 2 mM CDTA, 10% Glycerol, 0.5% Triton X-100, 2 mM DTT). Firefly luciferase activity was measured immediately following the addition of 40 μ L luciferase buffer (20 mM tricine, 0.1 mM EDTA, 1.07 mM $(\text{MgCO}_3)_4 \text{Mg}(\text{OH})_2 \cdot 5\text{H}_2\text{O}$, 2.67 mM MgSO_4 , 33.3 mM DTT, 270 μ M Coenzyme A, 470 μ M luciferin, 530 μ M ATP). Renilla luciferase was measured following the addition of 40 μ L coelenterazine buffer (1.1 M

NaCl, 2.2 mM Na₂EDTA, 0.22 M K₃PO₄ (pH 5.1), 0.44 mg/mL BSA, 1.3 mM NaN₃, 1.43 μM coelenterazine, final pH adjusted to 5.0). Relative luminescence was measured immediately following reagent addition using either Perkin Elmer EnVision 2103™ Multilabel Reader or Molecular Devices Analyst™ GT Multimode Reader.

RNA isolation and real-time PCR (RT-PCR)

For most in vivo studies, approximately 30 mg of tumor was homogenized in 1 mL Trizol and RNA was prepared according to manufacturers instructions. For the pharmacodynamic/gene expression experiment described in Figure 3B, C and Figure 3 – figure supplement 1B, flash frozen tumors were pulverized to powder by mechanical force (Covaris). Approximately 30 milligrams of tumor powder was lysed by addition of Buffer RLT (Qiagen) and homogenized by mechanical disruption (SPEX SamplePrep) and centrifugation through a QIAshredder column (Qiagen). RNA was subsequently isolated from homogenized lysates using the MagMAX-96 Total RNA Isolation Kit (Thermo Fisher Scientific), according to the manufacturer's protocol. For in vitro studies, cells were plated in phenol-free RPMI containing 5% charcoal dextran treated FBS. After 3 days the cells were treated with compound for approximately 20 hours. RNA isolation was performed as above. RNA (1 μg) was reverse-transcribed using the iScript cDNA synthesis kit (BIO-RAD, Hercules, CA). RT-PCR was performed using the Applied Biosystems 7900HT instrument and SYBR Green PCR Master Mix (Applied Biosystems, Foster City, CA). GAPDH expression was used to normalize all real-time data. Expression data was log₂ standardized and graphed in cell plot using JMP8 software (SAS). Real-time PCR primer sequences are listed in Supplementary File 3A. For the gene expression analysis in Figure 3B, C and Figure 3 - figure supplement, total RNA was reverse-transcribed to cDNA and pre-amplified with a pool of gene specific primers. Following amplification, samples were diluted one to four with Tris-EDTA (TE) buffer and qPCR was conducted on Fluidigm 96.96 Dynamic Arrays using the BioMark HD system according to the manufacturer's protocol. Samples were assayed in duplicate and gene expression data were analyzed using RealTime StatMiner qPCR data analysis software. Gene expression data were normalized to the mean of three reference genes (*PPIA*, *SDHA*, *UBC*) and relative expression values were calculated using the Delta Delta Ct method. Bar charts were graphed using Prism 6.0 (GraphPad) and heat maps were generated using JMP11 (SAS).

Chromatin Immunoprecipitation Assay

Cells were plated in 150 mm dishes (7×10^6 cells in 20 mL) in RPMI 1640 supplemented with 10% CSS for 48 hours. Cells were treated with GDC-0810 and 4-hydroxytamoxifen at $1 \mu\text{M}$, Fulvestrant at 100 nM, and E2 at 10 nM for 45 minutes or 4 hours. Following ligand treatment, formaldehyde was added to the media to a final concentration of 1%, incubated for 10 min and quenched with glycine (125 mM final concentration) for 5 minutes. Cells were washed 3X with PBS containing 1X Halt™ Protease & Phosphatase Single-Use Inhibitor Cocktail (1X PI, Thermo Scientific), pelleted, lysed in 1 mL RIPA buffer (50 mM Tris pH7.5, 0.15 M NaCl, 1% NP-40, 0.5% Na-deoxycholate, 0.05% SDS, 1 mM EDTA, 1X PI) and sonicated until the average DNA size fragment was ≈ 500 bp. The sonicated cross-linked chromatin was diluted into 3.3 mL RIPA and precleared with 100 μL 50% protein A/G agarose slurry (SC-2003, Santa Cruz Biotechnology) containing 200 mg per mL sonicated salmon sperm DNA and 500 mg per mL of BSA. One mL of precleared chromatin was then immunoprecipitated with 15 μg anti-ER (HC-20, Santa Cruz Biotechnology) or normal rabbit IgG (SC-2027, Santa Cruz Biotechnology), for 2 hours at 4°C and 100 μL of a 50% slurry of protein A/G agarose beads were added and incubated overnight at 4°C. Beads were washed 2 times sequentially in low-salt buffer (50 mM HEPES pH 7.8, 140 mM NaCl, 1 mM EDTA, 1% Triton X-100, 0.1% Na-deoxycholate, 0.1% SDS), high-salt buffer (same as low-salt with 500 mM NaCl), LiCl buffer (20 mM Tris pH 8.0, 1 mM EDTA, 250 mM LiCl, 0.5% NP-40, 0.5% Na-deoxycholate), and TE buffer (50 mM Tris pH 8.0, 1 mM EDTA). All washing steps were performed in the presence of 1X PI. Protein-DNA complexes were eluted in 225 μL Elution buffer (50 mM Tris pH 8.0, 1 mM EDTA, 1% SDS) at 65°C twice for 15 minutes. Eluted protein-DNA complexes were reverse cross-linked in the presence of NaCl overnight at 65°C and further treated with EDTA and proteinase K at 42°C for 1 hour. The DNA fragments were purified in 10 mM Tris pH 8.5 using the QIAquick PCR purification kit (Qiagen), diluted and analyzed by real-time PCR using iTaq SYBR Green Supermix with ROX (Bio-Rad). The samples were amplified on the ABI 7900HT instrument. Oligonucleotide primer sequences are listed in Supplementary File 3B.

Droplet Digital PCR (ddPCR)

Droplet digital PCR probe assays containing 5'HEX-labeled (WT) or 5'FAM-labeled (Mutant) probes were designed to detect the Y537S (1980 A>C), and D538G (1983 A>G) *ESR1* mutations within the ER ligand-binding domain. *ESR1* Y537S assay sequences were: Forward, GTACAGCATGAAGTGCAA; Reverse, GGGCGTCCAGCATC; WT Probe, AGCAGGTCATAGAGGGG; Y537S Mutant Probe, AGCAGGTCAGAGAGGG and D538G assay sequences were: Forward, TACAGCATGAAGTGCAAG; Reverse, TGGGCGTCCAGCA; WT Probe, CCCCTCTATGACCTGCT; D538G Mutant Probe, TCTATGGCCTGCTGCT. All assays were performed on the QX200™ Droplet Digital PCR System (BioRad) according to the manufacturer's protocol. Each assay run incorporated *ESR1* WT and mutant oligo controls and a human scramble WT genomic DNA control (Roche), which were used to determine fluorescence amplitude thresholds for positive and negative mutation calls. Samples were assessed for the presence and allele frequencies of *ESR1* mutations using 20ng input cell line genomic DNA. For assessment of *ESR1* mutant RNA allele frequencies, 1µg total cell line RNA was reverse-transcribed using the High Capacity cDNA Reverse Transcription Kit (Applied Biosystems), and 10ng input cDNA was used in each digital PCR reaction. Mutant allele frequencies were calculated using QuantaSoft software (BioRad).

Western Blot

Proteins from cell lysates were separated electrophoretically using NuPAGE 4-12% Bis Tris Gels (Life technologies) in MOPS buffer (Life Technologies). Gels were then electroblotted onto Nitrocellulose Pre-Cut Blotting Membranes (Life Technologies), blocked with LI-COR blocking buffer (LI-COR), incubated with Rabbit anti-ERα antibody (SP-1; Thermo Scientific) and mouse Anti-α-Tubulin antibody (DM1A, Sigma-Aldrich). Membranes were washed with 0.1% tween-20 in PBS. Membranes were then incubated with IRDye 800 CW goat anti rabbit and IRDye 680 CW goat anti mouse secondary antibodies (LI-COR), washed, and scanned using a LI-COR Odyssey infrared imaging system. ERα and α-tubulin levels were quantitated using a LI-COR Odyssey infrared imaging system. ER levels were normalized to α-tubulin. Percent ERα was defined as normalized ERα sample/normalized ERα untreated cells x 100.

1429 **In Vivo Pharmacology**

1430 Animal studies were conducted in accordance with the Guide for the Care and Use of Laboratory
1431 Animals, National Academy Press (2006), conforming to California State legal and ethical
1432 practices and approved by the Institutional Animal Care and Use Committee (IACUC, Seragon
1433 and/or Genentech).

1434 **Beeswax pellet manufacture**

1435 Beeswax pellets are prepared by mixing 50mg 17 α -Ethinylestradiol (Sigma) to 1.95g melted
1436 beeswax (Sigma) @ 60°C for 10-15 minutes (until dissolved). Pellets are formed by applying 2-
1437 3 drops of wax/estradiol mixture onto a cold sterile weight boat using a glass Pasteur pipette.
1438 Procedure results in ~30mg pellets containing ~1mg estradiol, resulting in plasma estrogen levels
1439 of approximately 150pg/mL.

1440 **Ovariectomy**

1441 With the animal in ventral recumbency, a 1 cm dorsal midline skin incision is made
1442 approximately 1cm anterior to the base of the tail. A single incision of ~5 mm in length is made
1443 into the muscle wall on both the right and left sides and the ovaries and the oviducts are
1444 exteriorized. Each ovarian fat pad, ovary and part of the oviduct is excised with a cautery and
1445 the remaining tissue is returned to the peritoneal cavity. The skin incision is closed with wound
1446 clips.

1447

1448 **Xenograft Models**

1449 For efficacy studies, drug treatments were initiated when tumors reached an average of 150-
1450 350mm³. Specific models are described below:

1451 **WHIM20**

1452 The WHIM20 patient derived xenograft model (WHIM20) was established via direct
1453 implantation of metastatic tumor material into immune compromised mice at Washington
1454 University in St. Louis(Li et al., 2013). WHIM20 harbors an ESR1 Y537S mutation.

Tumors were established from fragments obtained from Washington University by subcutaneous implantation via 10G trocar into the right flank of 6-7 week old female NOD.CB17-Prkdc^{scid}/NcrCrl mice (Charles River Laboratories) and NOD.Cg-Prkdc^{scid} Il2rg^{tm1Wjl}/SzJ mice (Jackson Laboratories). Tumor line was propagated by serial transplantation. Animals were ovariectomized prior to initiation of treatment.

For the pharmacodynamic (PD) experiment, tumor-bearing animals were treated with specified compounds for 4 days. Tumors were harvested 8 hours after the final dose and fixed in 10% formalin prior to paraffin-embedding, or flash-frozen in liquid nitrogen for subsequent protein and RNA extractions.

MCF7 HA-ER.Y537S

Ovariectomized female Crl:NU-Foxn1^{nu} mice (Charles River Laboratories) at 6-8 weeks of age implanted s.c. on the right flank with tumor fragments.

TamR1

The tamoxifen-resistant derivative of the ER+ human tumor cell line, MCF7 (TamR1) was developed by Seragon Pharmaceuticals, Inc (Lai et al., 2015). Briefly, female Crl:NU-Foxn1^{nu} mice bearing MCF7 tumors growing subcutaneously (harboring 0.72 mg/60 day release 17 β - estradiol pellets; Innovative Research of America) were subjected to chronic daily tamoxifen treatment (60 mg/kg/day) by oral gavage, resulting in an inhibition of tumor growth. Following emergence of tamoxifen resistant tumor growth the daily tamoxifen dose was increased to 120 mg/kg/day. The tumors which continued to grow under these conditions were serially passaged and evaluated for continued tamoxifen resistance. One tamoxifen-resistant tumor line developed by this method was designated TamR1. TamR1 expresses wild-type ER α and is dependent on exogenous estradiol or tamoxifen for growth in female Crl:NU-Foxn1^{nu} mice.

TamR1 tumor fragments were implanted into the right lower flank of female Crl:NU-Foxn1^{nu} mice (Charles River Laboratories). Animals were treated with tamoxifen until tumor fragments

reached an average size of 200 mm³, after which dosing with test article was initiated and continued for 28 days.

HCI-003

The HCI-003 model was established at the University of Utah, Huntsman Cancer Center via direct implantation of both primary tumor material into immune compromised mice (DeRose et al., 2011). HCI-003 is wild-type at the ESR1 ligand binding domain. Exogenous estradiol is required for robust growth of this patient derived tumor line, and is supplied in the form of estradiol impregnated beeswax pellets. Tumor fragments obtained from the Huntsman Cancer Center were surgically implanted into the cleared mammary fat pad of 19 day old female NOD.CB17-Prkdc^{scid}/NcrCrl mice (Charles River Laboratories). The right mammary fat pad of recipient animals was exposed by a 1cm incision on the ventral mid-line at the level of the 4th mammary. The blood vessels were cauterized and the fat pad blunt dissected from the abdominal wall and skin. Tumor fragments were excised from donor animals, chopped into fragments approximately 8mm³ (2mm x 2mm x 2mm), implanted in the region of the cleared mammary fat pad, and the incision was closed with wound clips. Estradiol impregnated beeswax pellets were implanted subcutaneously into the interscapular space of recipient animals on the day of tumor implant. Recipient animals were ovariectomized 19 days after tumor fragment implant. One group of animals was designated as a control for estradiol independent tumor growth (Vehicle-E2) and the estradiol impregnated pellets were excised on the first day of dosing. All mice were housed and maintained according to the animal-use guidelines of the Institutional Animal Care and Use Committee (IACUC), conforming to California State legal and ethical practices.

MCF7

Female Crl:NU-Foxn1nu mice (Charles River Laboratories) at 7 weeks of age were implanted s.c. with estradiol pellets (0.36mg, 60 day release, Innovative Research) in the interscapular

region. Three days later, 1×10^7 MCF7 cells/100 μ L (in HBSS:Matrigel, 1 :1) were injected into the 2/3 mammary fat pad.

ZR-75-1

Female Crl:NU-Foxn1^{nu} mice (Charles River Laboratories) at 7 weeks of age were implanted s.c. with estradiol pellets (0.72mg, 60 day release, Innovative research of America) in the interscapular region. Three days later, 5×10^6 ZR-75-1 cells/100 μ L (in DMEM :Matrigel, 1 :1) were injected s.c. on the right flank.

MDA-MB-231

Female Crl:NU-Foxn1^{nu} mice (Charles River Laboratories) at 6 weeks of age were injected s.c. with 5×10^6 MDA-MB-231 cells/100 μ L (in DMEM :Matrigel, 1 :1) on the right flank.

FES-PET/CT Imaging Experiment - MCF7 Xenograft Tumors

Cell Lines

MCF7 cell line (ATCC) was maintained in IMEM/10% FBS (Gibco) and authenticated by short tandem repeat profiling using Sanger sequencing.

Xenograft Studies

Experiments with mice were approved by the Vanderbilt IACUC. Female 4- to 5-week old ovariectomized athymic Balb/c mice (Harlan Sprague Dawley) were implanted s.c. with a 14-day-release, 0.17 mg 17 β -estradiol pellet (Innovative Research of America). The next day, 10^7 MCF7 cells suspended in IMEM:Matrigel (BD Biosciences; 1:1 ratio) were injected s.c. in the right flank of each mouse. After 4 weeks, mice bearing tumors ≥ 250 mm³ were randomized to treatment with vehicle (80 mM sodium citrate buffer, pH 3.0) or GDC-0810 (10 and 100 mg/kg/day, p.o.). Tumor diameters were measured using calipers twice per week and volume in mm³ calculated with the formula: volume = width² x length/2. Tumors were harvested 1 h after the last dose of GDC-0810 and either flash-frozen in liquid nitrogen or fixed in 10% formalin prior to paraffin-embedding. Five- μ m paraffinized sections were used for immunohistochemistry

(IHC) using ER α (Vector Labs, # VP-E613) and PR antibodies (Dako, # M3569). Sections were scored by a trained breast pathologist (M.V.E.) blinded to the type of treatment.

FES-PET/CT Imaging

On day 0 (pre-treatment baseline) and on day 7 (post-treatment), mice were anesthetized with 2% isoflurane and injected retroorbitally with ~11 MBq/0.1 mL of ^{18}F -estradiol (specific activity ~9000 Ci/mmol). Sixty minutes later, mice were anesthetized with 2% isoflurane and imaged in an Inveon micro PET/CT (Siemens Preclinical Solutions, Knoxville, TN) for 20 min. All PET data sets were reconstructed using the MAP algorithm into $128 \times 128 \times 159$ slices with a voxel size of $0.776 \times 0.776 \times 0.8 \text{ mm}^3$. The CT images were acquired at an x-ray beam intensity of 22 mAs and x-ray voltage of 80 kVp. The CT images were reconstructed into $768 \times 768 \times 512$ voxels at a voxel size of $0.114 \times 0.114 \times 0.114 \text{ mm}^3$.

Data Analysis

Anatomical regions-of-interest (ROIs) were drawn around tumor and muscle (hind limb) in the CT images using the medical imaging analysis tool AMIDE and superimposed on the PET images (Loening and Gambhir, 2003). Radiotracer concentration within the tumor ROIs was divided by that of muscle to obtain a standard uptake value tumor-to-muscle ratio (SUV_r) for each mouse. Post-treatment SUV_r's in each vehicle- or GDC-0810-treated mouse were compared to the respective pre-treatment SUV_r. Significant differences in post-treatment vs. baseline IHC histoscores and ^{18}F -estradiol PET/CT imaging were determined by repeated ANOVA with Bonferroni post hoc-test. A p value of <0.05 was considered statistically significant.

H-score

Tumors were harvested 1 h after the last dose of GDC-0810 and flash-frozen in liquid nitrogen or fixed in 10% formalin prior to paraffin-embedding. Five- μm paraffinized sections were used for immunohistochemistry (IHC) using antibodies against ER α (Vector Labs, # VP-E613) and PR (Dako, # M3569). The histoscore for ER α and PR staining was assessed by an expert breast pathologist (M.V.E.) using a modified scoring method previously reported by Nenutil *et al.* Briefly, total cells and cells with positive staining were counted and the percent of positive nuclei over the total in each high power field was calculated. Fields were then assigned a relative staining intensity score of 1 for low, 2 for intermediate, or 3 for high staining. The product of the

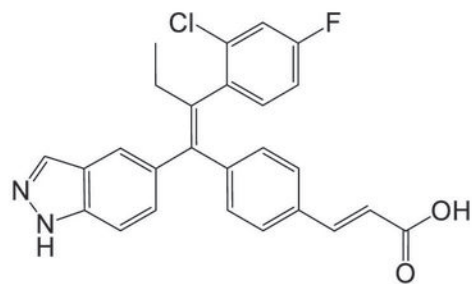
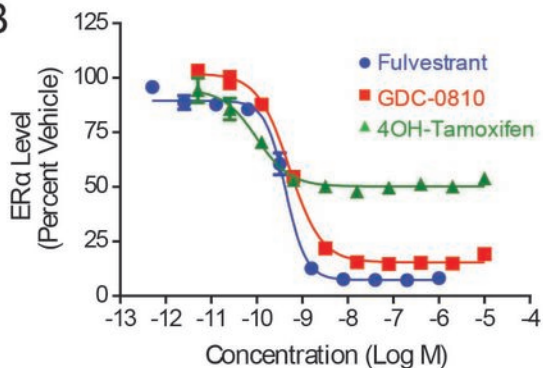
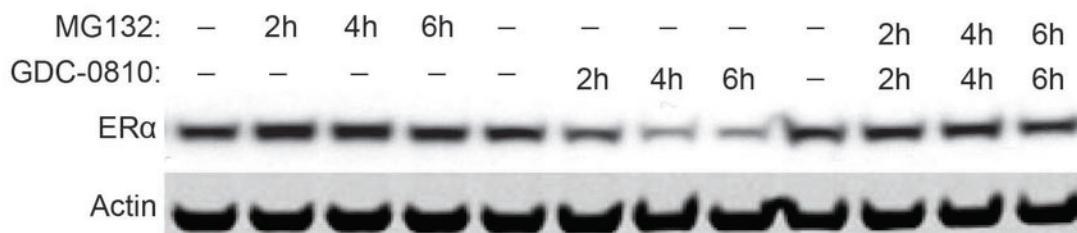
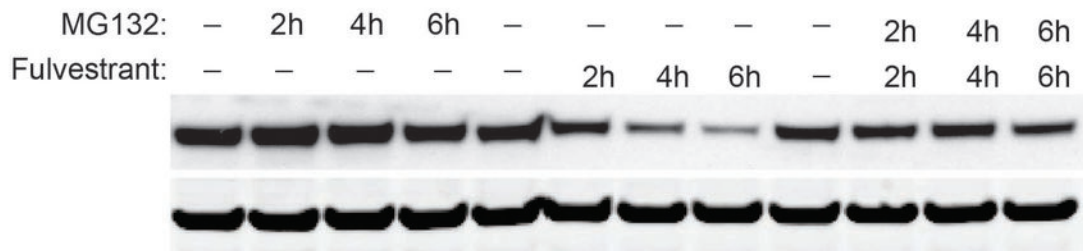
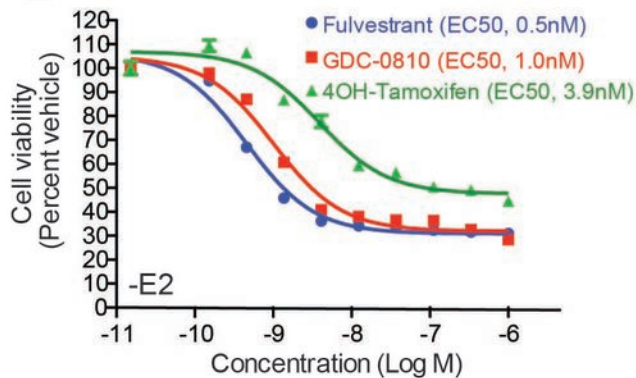
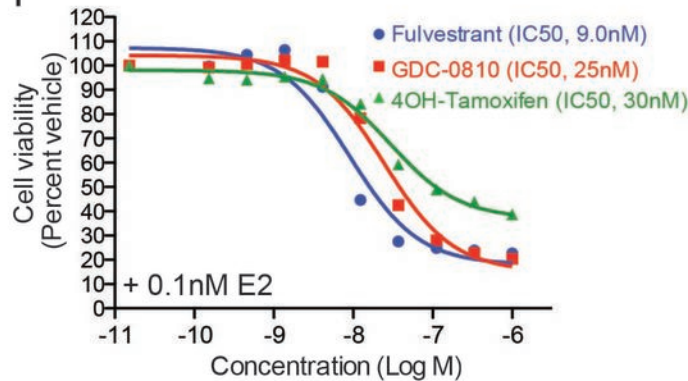
percent positive cells and staining intensity was then derived to create a histoscore of 0-300 for each high power field.

LEGENDS FOR SUPPLEMENTARY FILES

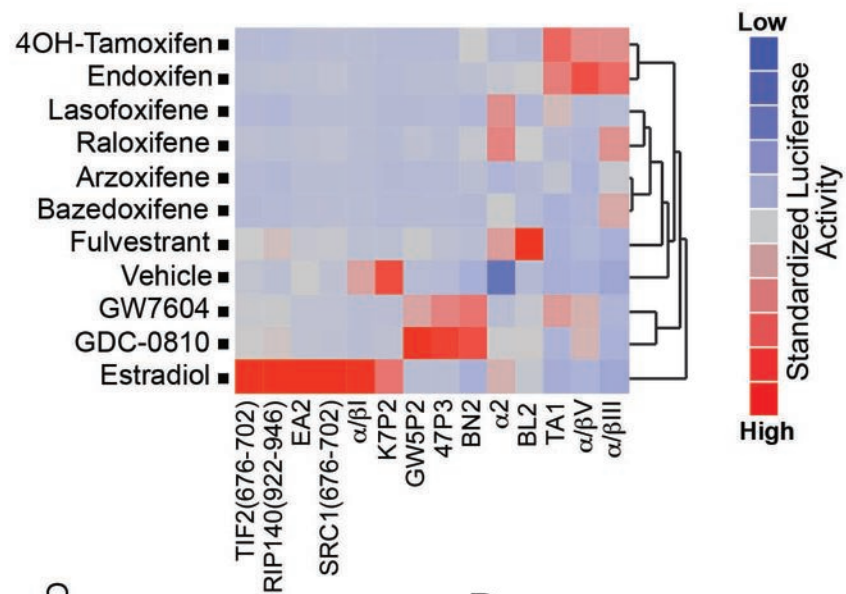
Supplementary file 1. Supplementary data tables related to the specificity for GDC-0810 in binding and activation of ER relative to other nuclear hormone receptors. **(A)** Radioligand binding assay **(B)** GDC-0810 nuclear hormone receptor reporter activity; agonist mode **(C)** GDC-0810 nuclear hormone receptor reporter activity; antagonist mode

Supplementary file 2. GDC-0810 and fulvestrant mouse pharmacokinetic data. **(A)** GDC-0810 mouse pharmacokinetics **(B)** Fulvestrant plasma concentrations

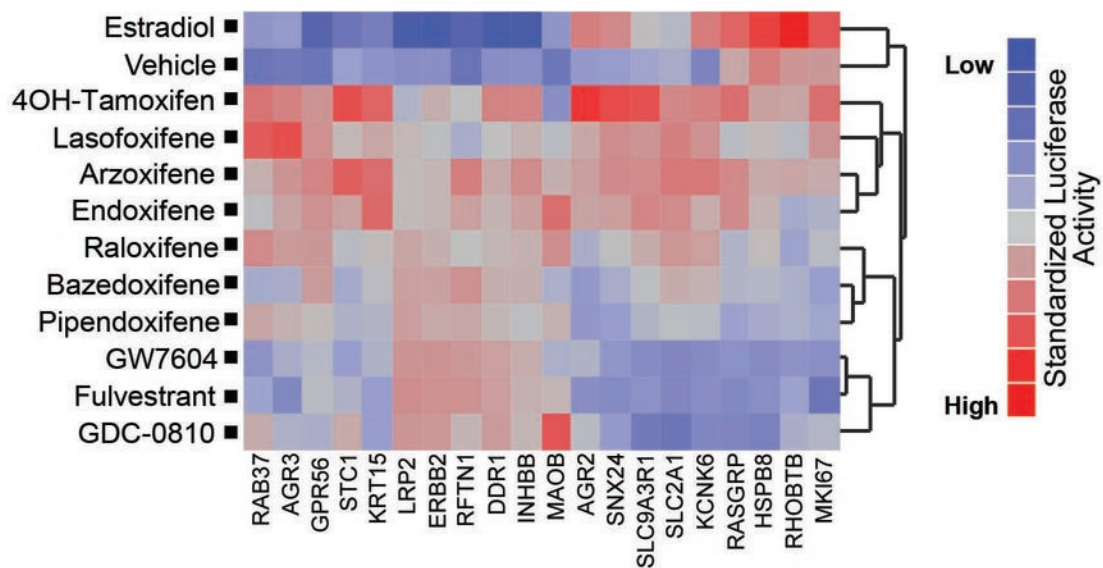
Supplementary file 3. Primer sequences **(A)** Transcriptional Real-time PCR Oligonucleotide Sequence **(B)** ER-ChIP Real-time PCR Oligonucleotide Sequence

A**B****C****D****E****F**

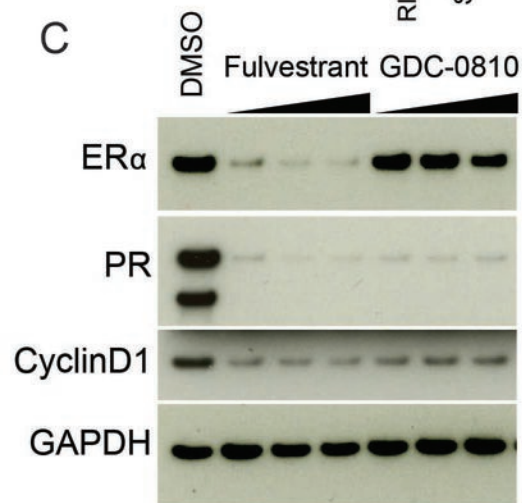
A



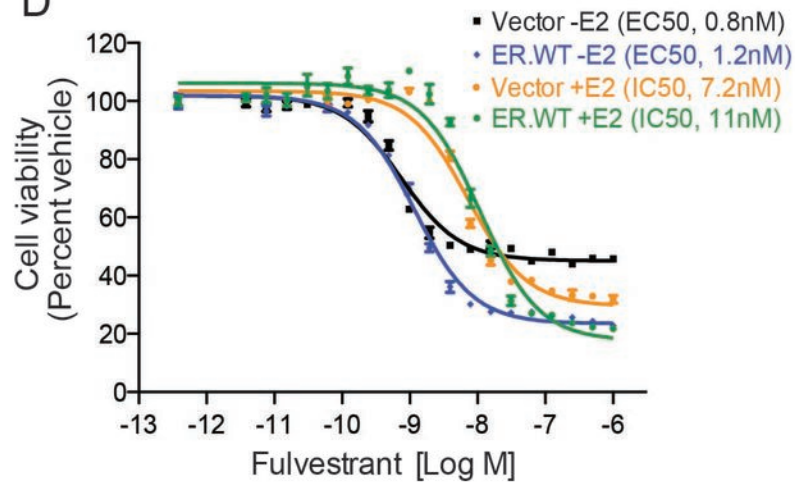
B



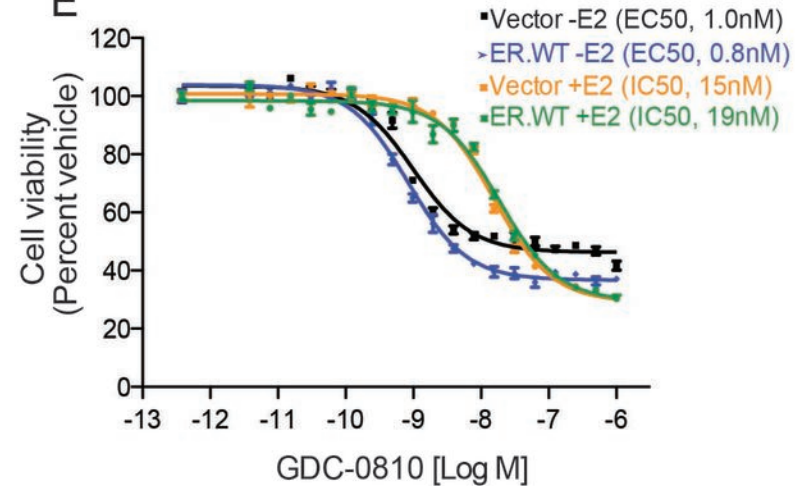
C



D

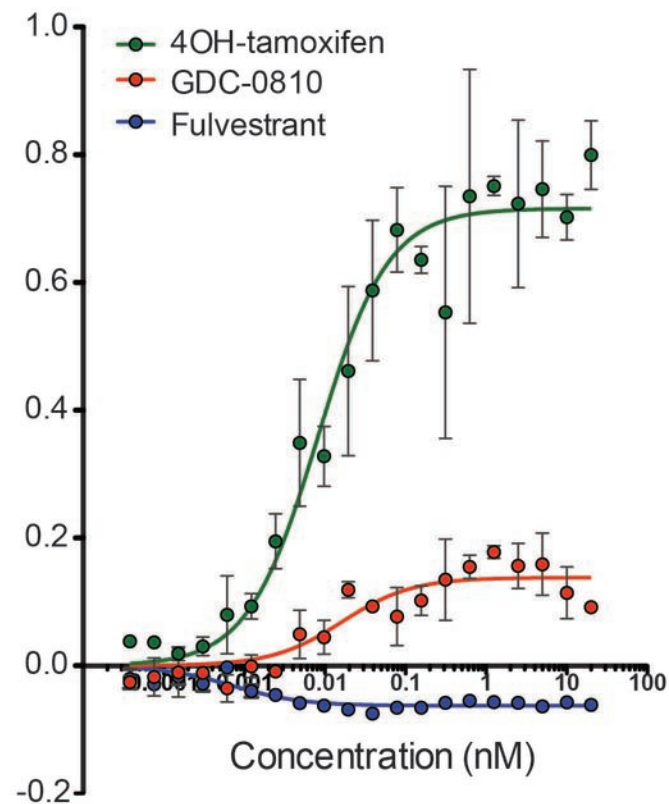
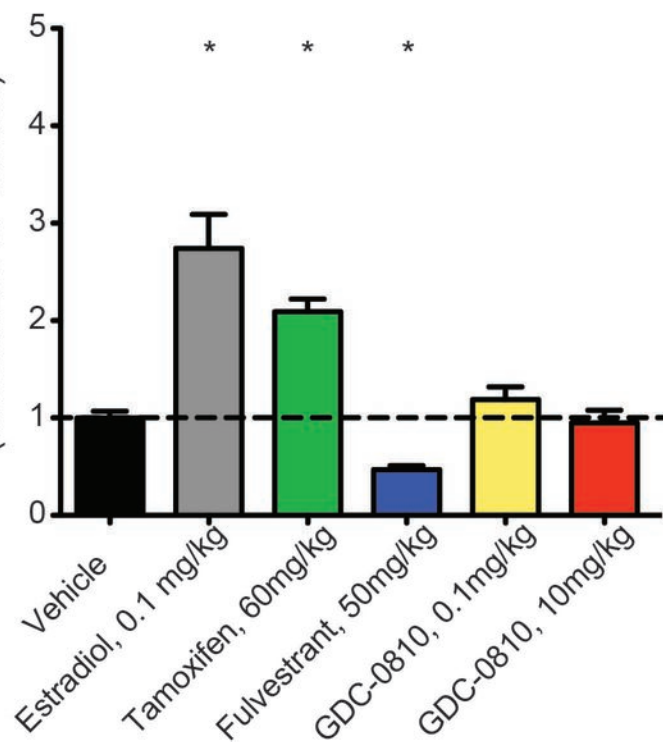


E



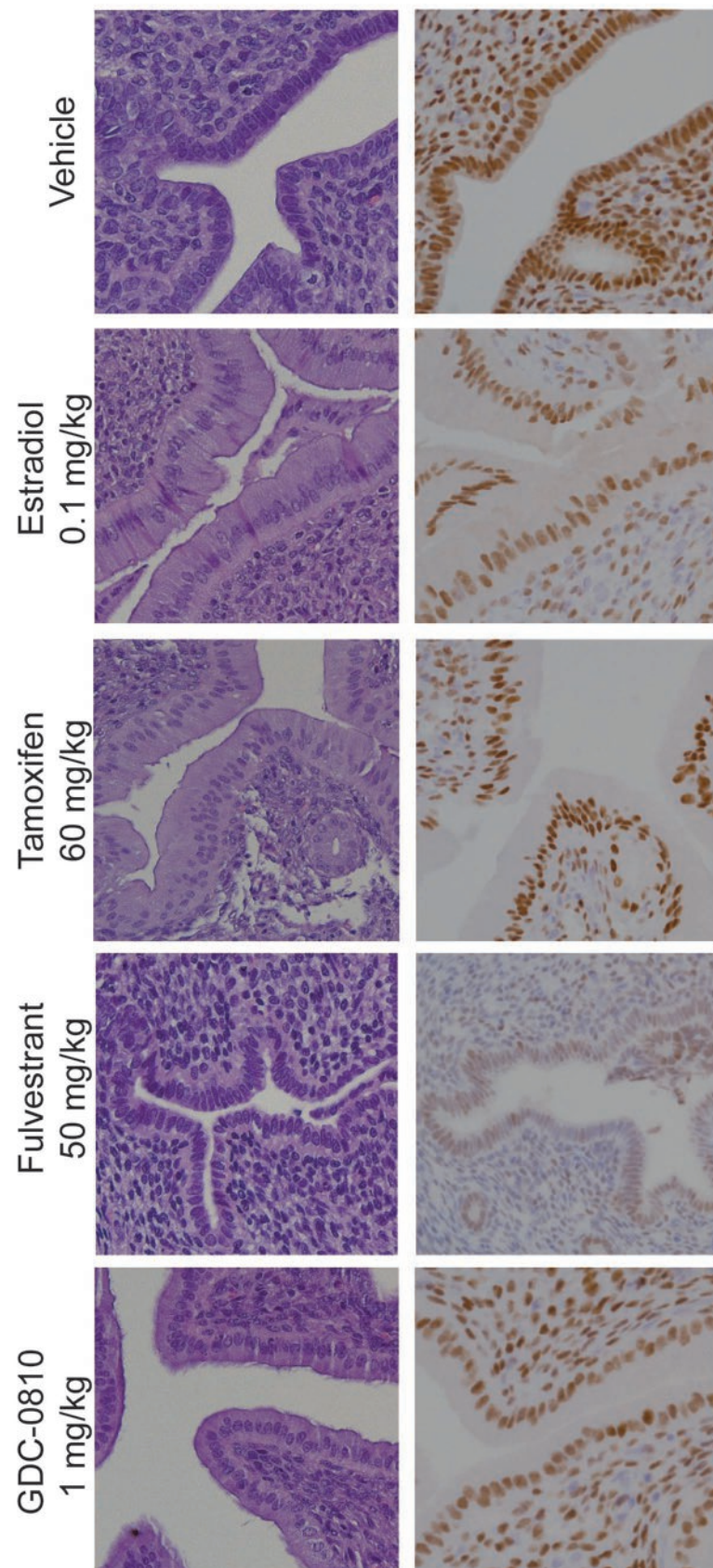
A

Relative Alkaline Phosphatase Activity

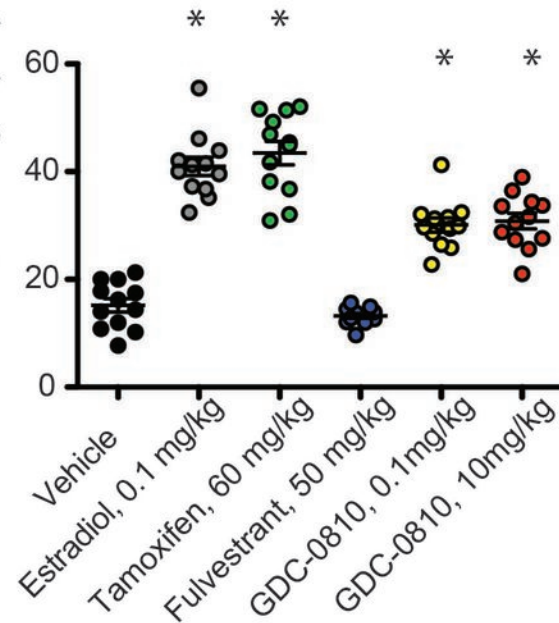
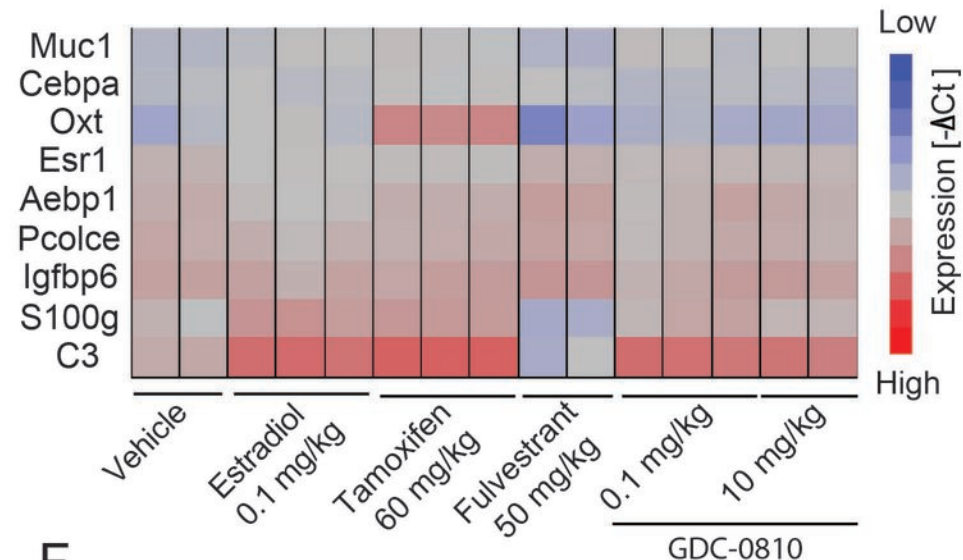
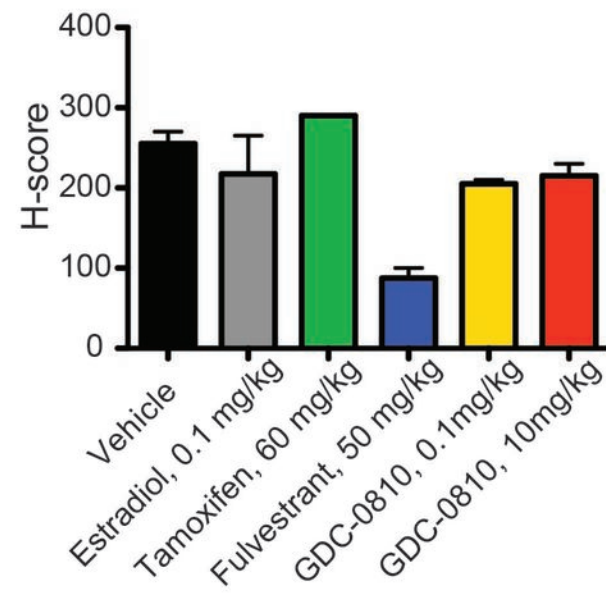
**B**Uterine Wet Weight/Body Weight
(Normalized to Vehicle)**C**

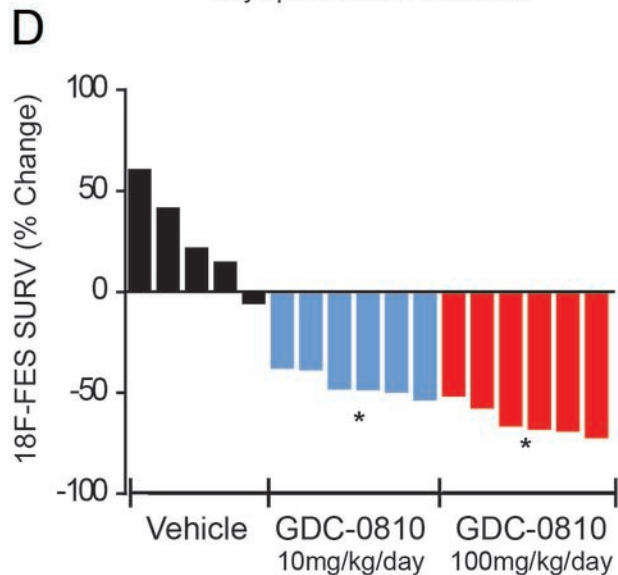
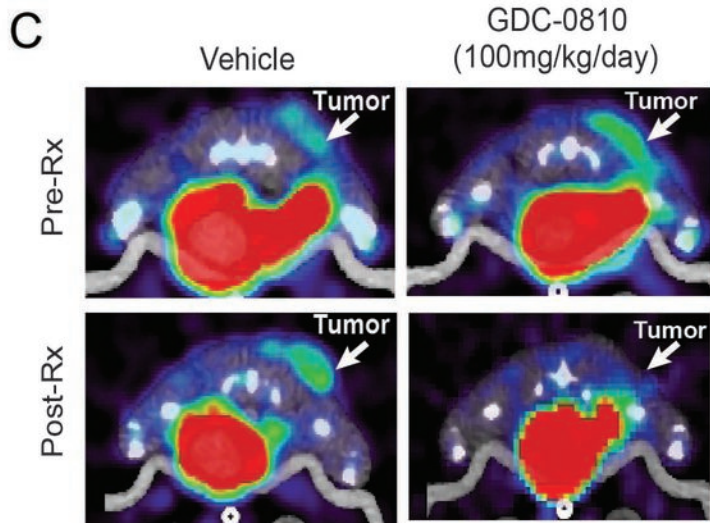
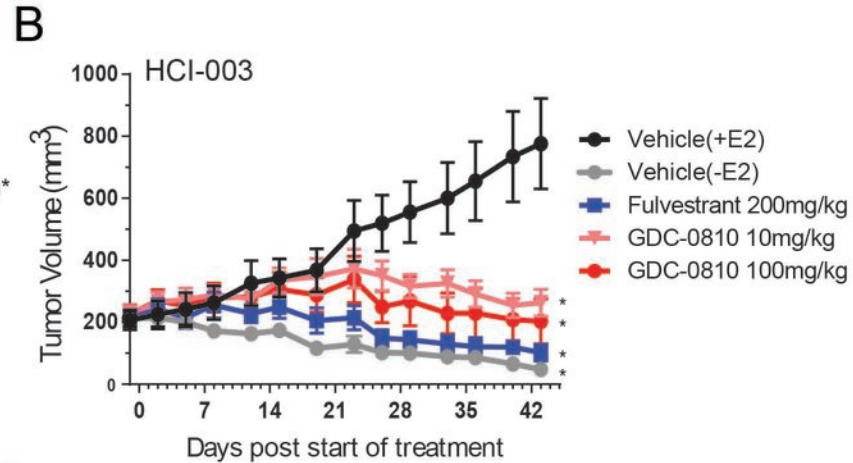
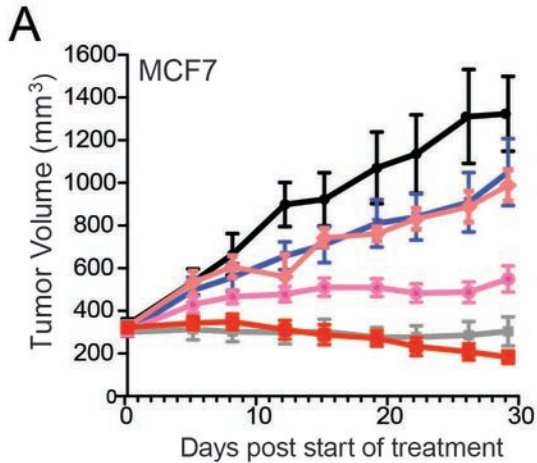
H&E

IHC: ER

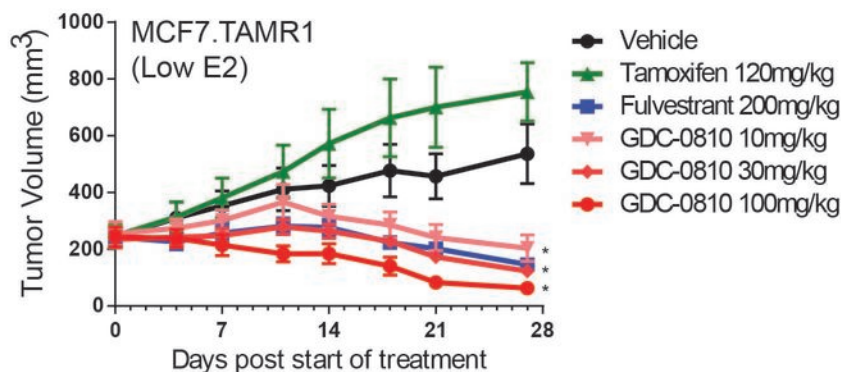
**D**

Endometrial Height (uM)

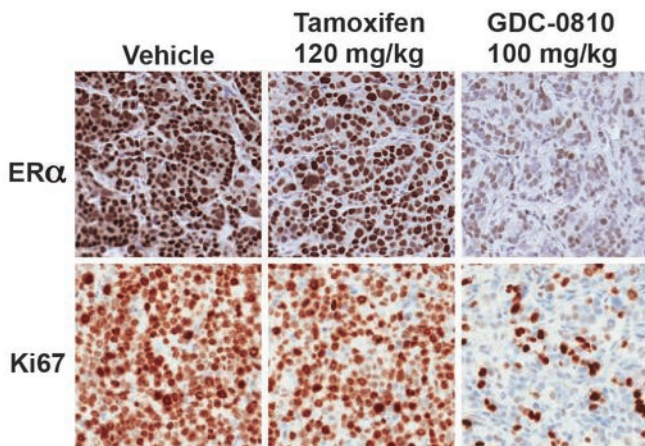
**E****F**



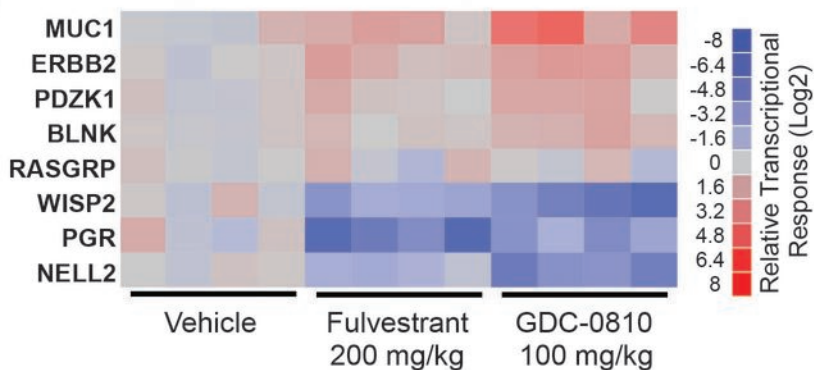
A

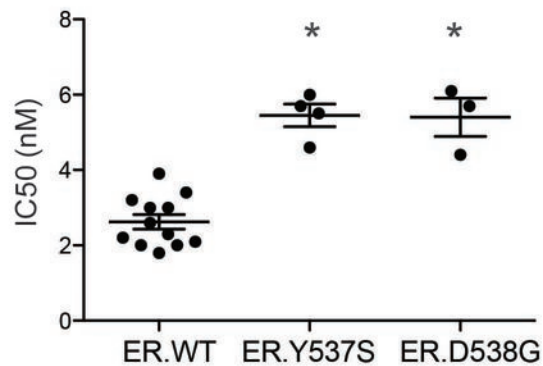
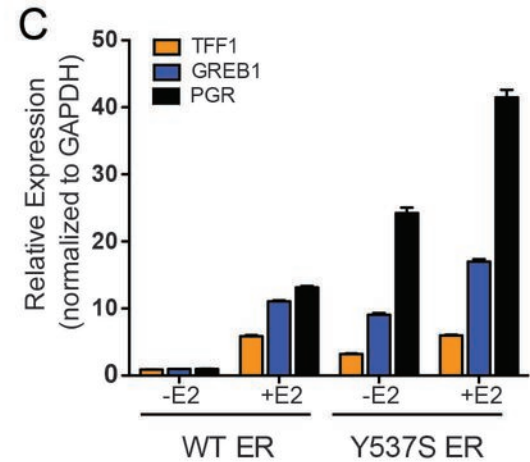
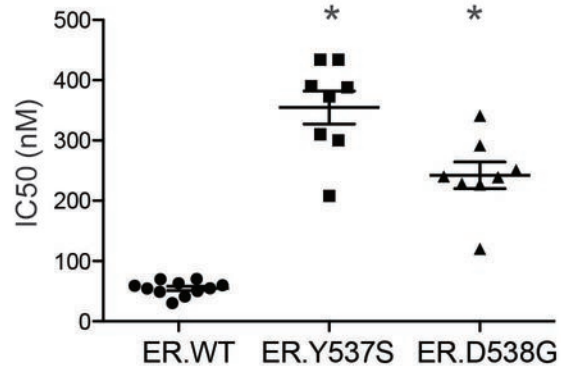
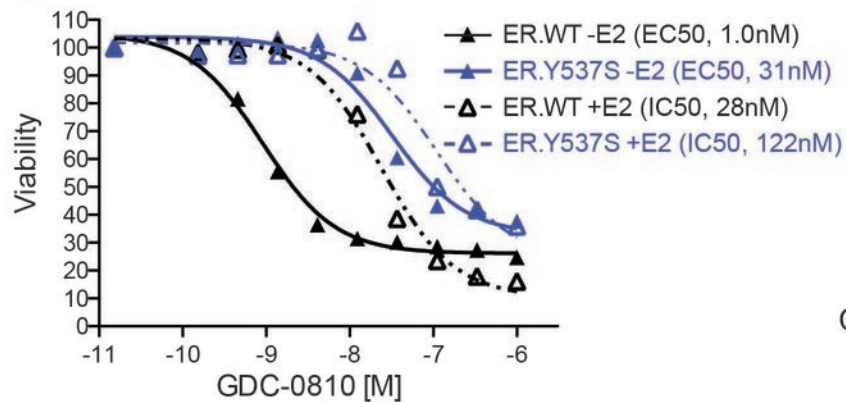
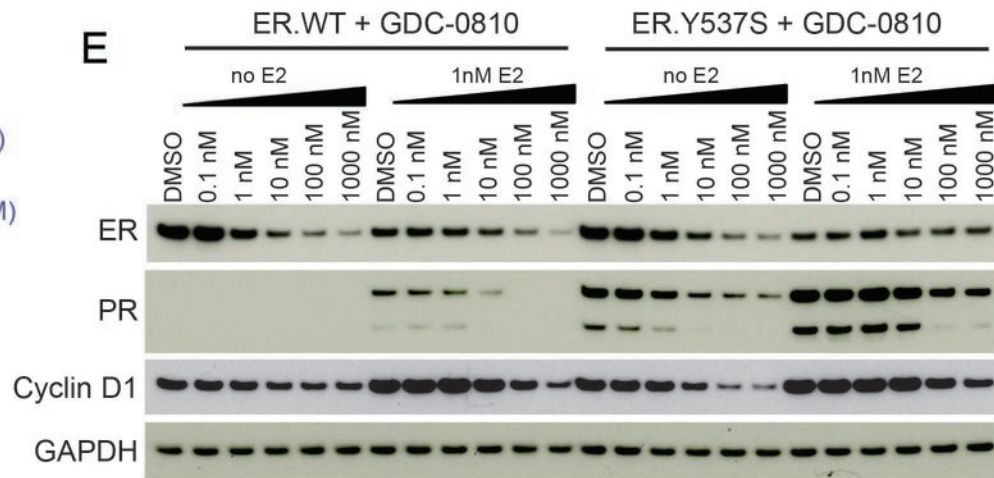


B

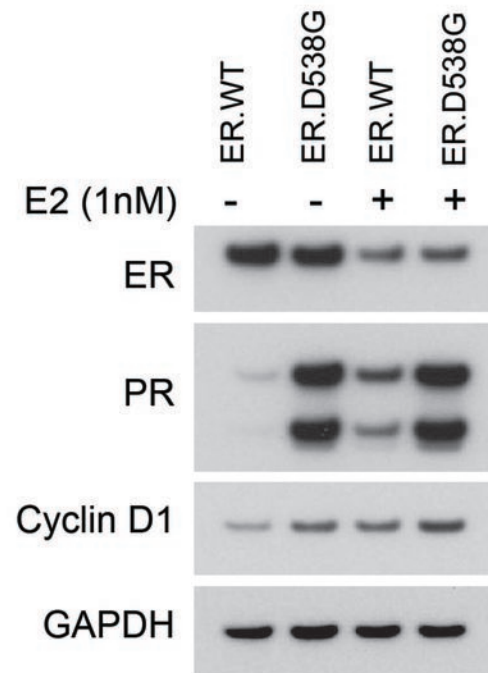


C

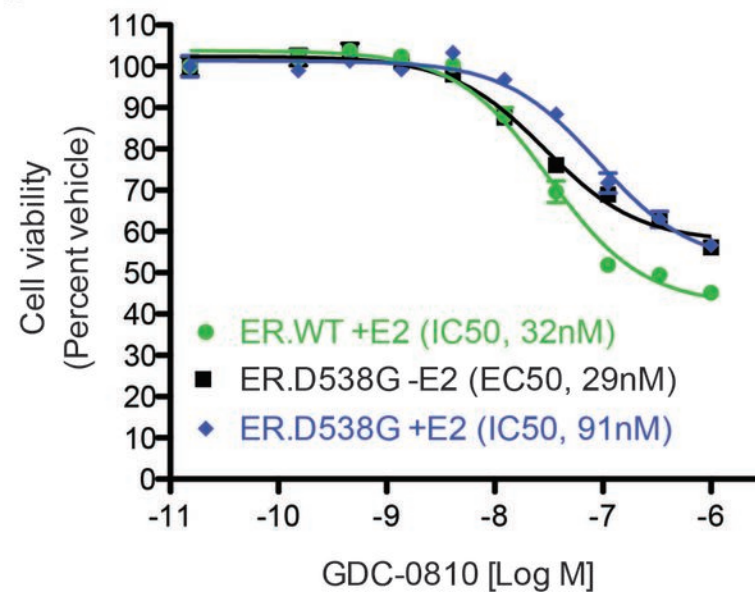


A E2 competitive binding: GDC-0810**B** PGC1 α dissociation: GDC-0810**D****E**

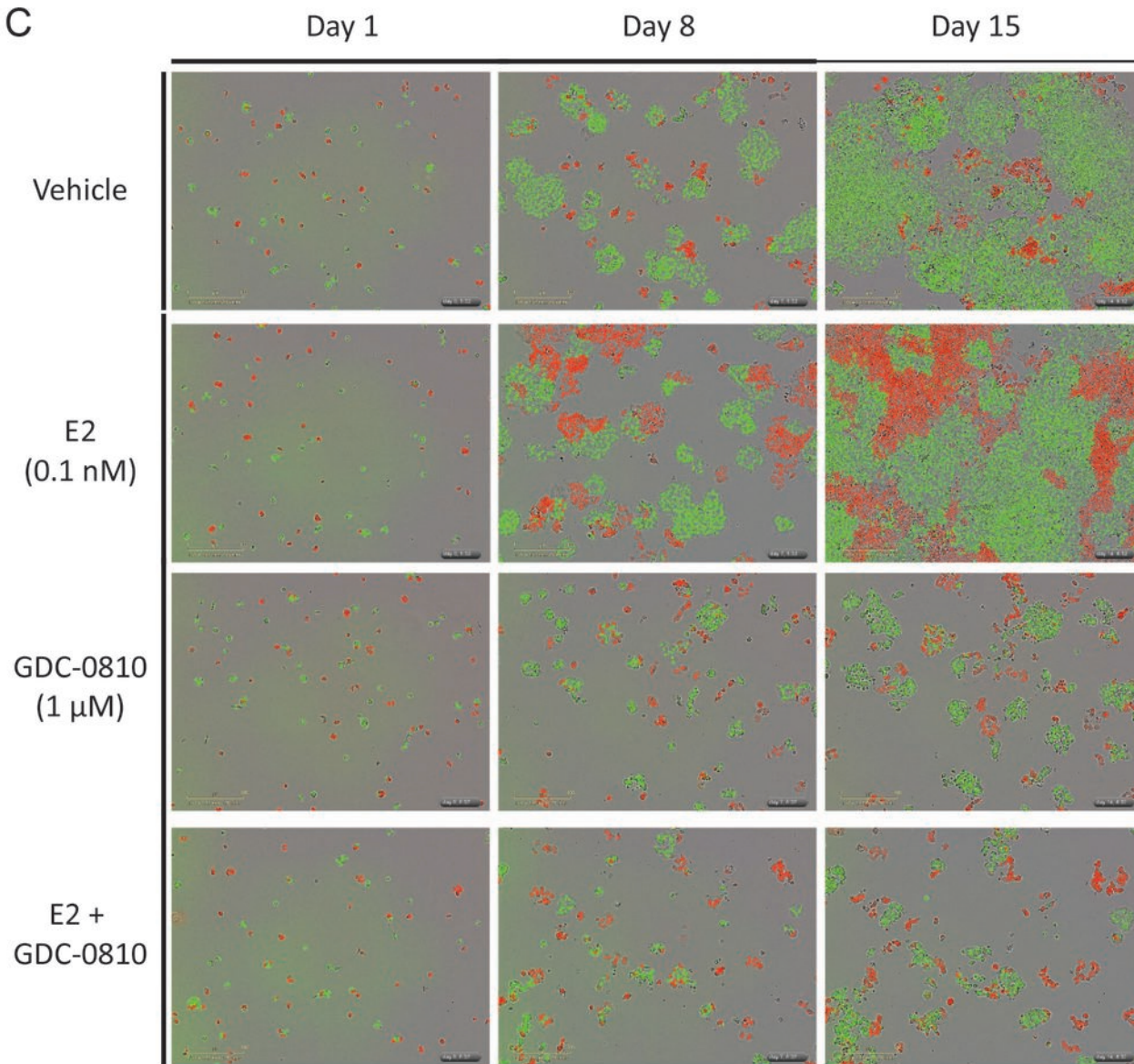
A



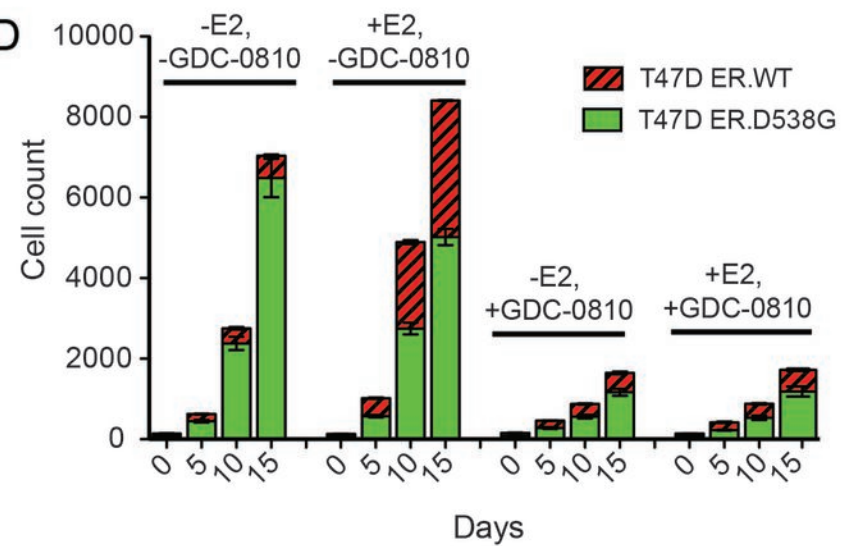
B



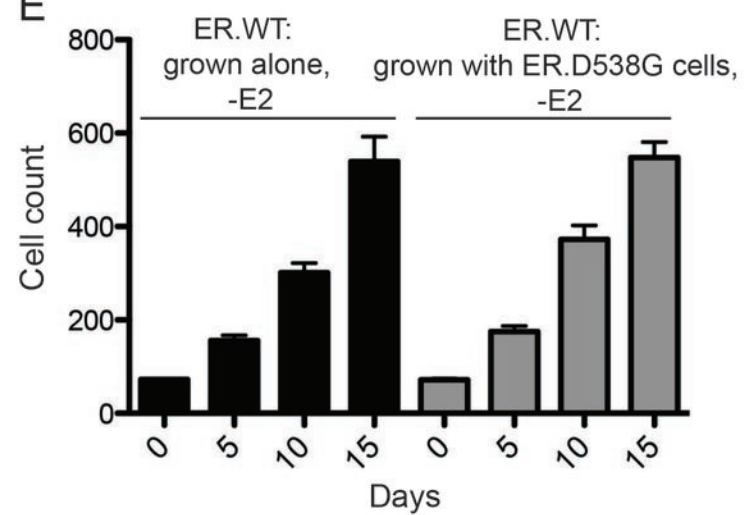
C

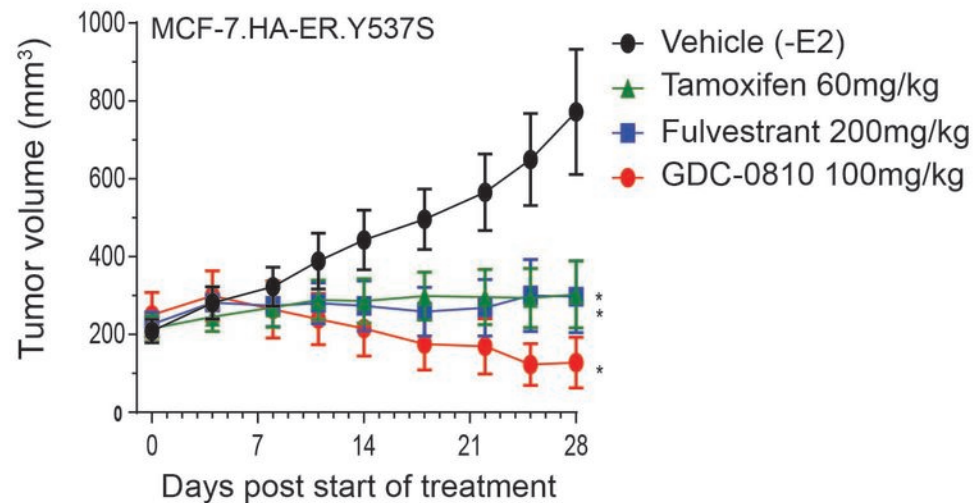
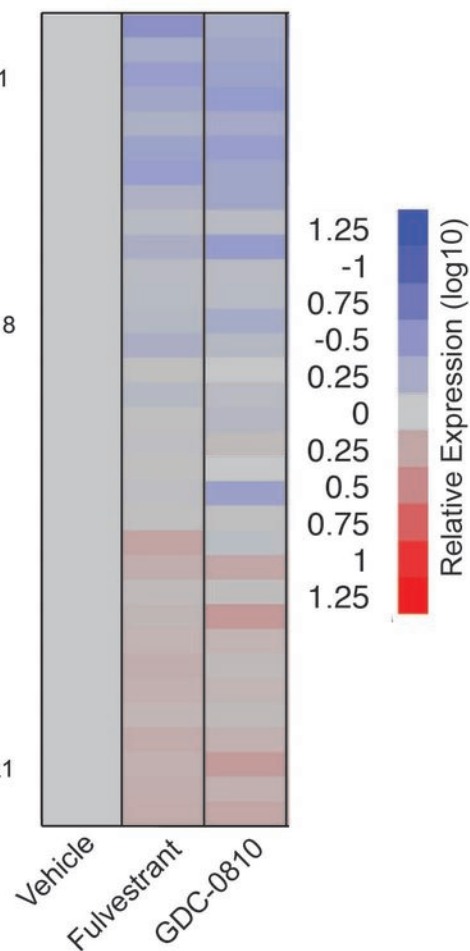
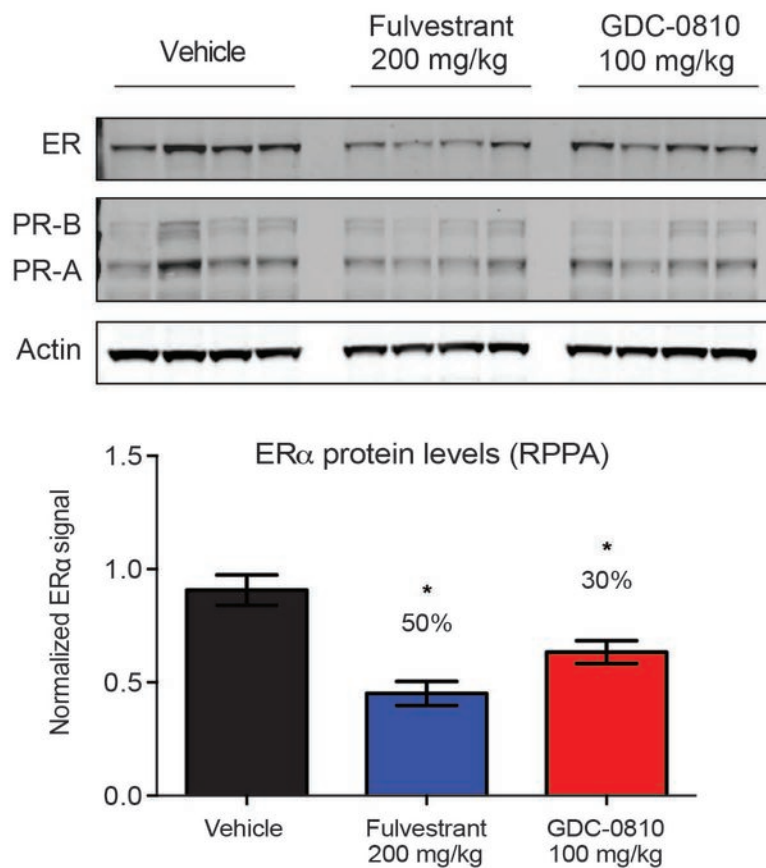
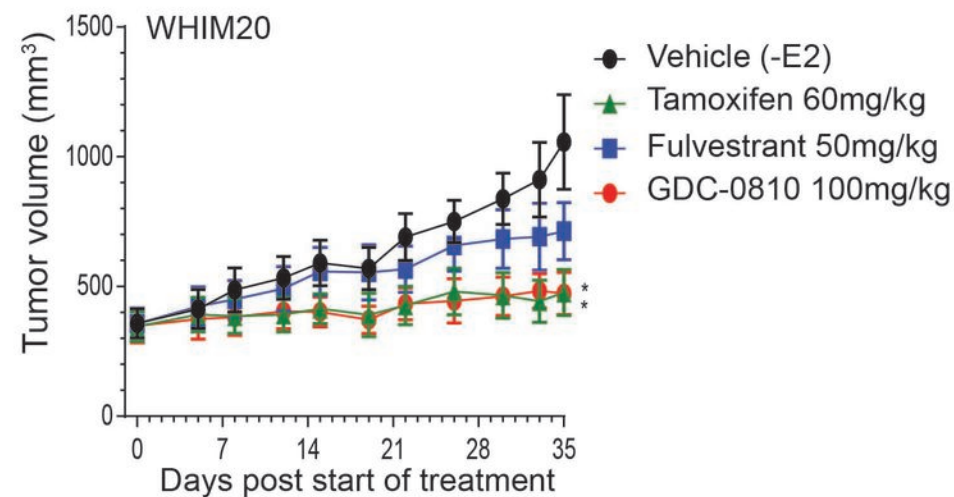


D



E



A**B****C****E****D**