

Identification of TMEM206 proteins as pore of PAORAC/ASOR acid-sensitive chloride channels

Florian Ullrich^{1,2}, Sandy Blin^{1,2}, Katina Lazarow¹, Tony Daubitz^{1,2}, Jens Peter von Kries¹, Thomas J. Jentsch^{1,2,3,§}

¹ Leibniz-Forschungsinstitut für Molekulare Pharmakologie (FMP), Berlin

² Max-Delbrück-Centrum für Molekulare Medizin (MDC), Berlin

³ NeuroCure Cluster of Excellence, Charité Universitätsmedizin Berlin

§ To whom correspondence should be addressed at Jentsch@fmp-berlin.de

Keywords: PAC – proton-activated – $I_{Cl,H}$ – Cl^- channel – PAORAC

ABSTRACT

Acid-sensing ion channels have important functions in physiology and pathology, but the molecular composition of acid-activated chloride channels had remained unclear. We now used a genome-wide siRNA screen to molecularly identify the widely expressed acid-sensitive outwardly-rectifying anion channel PAORAC/ASOR. ASOR is formed by TMEM206 proteins which display two transmembrane domains (TMs) and are expressed at the plasma membrane. Ion permeation-changing mutations along the length of TM2 and at the end of TM1 suggest that these segments line ASOR's pore. While not belonging to a gene family, TMEM206 has orthologs in probably all vertebrates. Currents from evolutionarily distant orthologs share activation by protons, a feature essential for ASOR's role in acid-induced cell death. TMEM206 defines a novel class of ion channels. Its identification will help to understand its physiological roles and the diverse ways by which anion-selective pores can be formed.

INTRODUCTION

Chloride is by far the most abundant anion in animals. Its concentration can vary substantially between the extracellular space, the cytoplasm and various intracellular organelles, resulting in concentration gradients across membranes separating these compartments. Negatively charged chloride can cross biological membranes only with the help of membrane-spanning proteins such as Cl⁻ channels, which allow passive diffusion of Cl⁻ along its electrochemical gradient, or transporter proteins that couple the movement of Cl⁻ to that of other ions and can thereby establish electrochemical gradients.

Chloride channels fulfill a broad range of biological functions, including the homeostasis of cell volume, vesicular acidification, transepithelial transport and cellular signaling (*Jentsch and Pusch, 2018; Jentsch et al., 2002*). Elucidation of these roles has been greatly facilitated by the molecular identification of the underlying channel proteins, a discovery process that began in the late 1980's and is still ongoing. Chloride channels are molecularly and structurally very diverse and lack a defining 'signature' pattern.

More than six unrelated Cl⁻ channel families are known, prominently including voltage-regulated CLC channels (*Jentsch and Pusch, 2018; Jentsch et al., 1990*), bestrophin (*Hartzell et al., 2008; Sun et al., 2002*) and TMEM16 (*Caputo et al., 2008; Schroeder et al., 2008; Y. D. Yang et al., 2008*) Ca²⁺-activated Cl⁻ channels, as well as LRRC8/VRAC volume-regulated anion channels (*Qiu et al., 2014; Voss et al., 2014*). However, several Cl⁻ currents biophysically characterized in mammalian cells still lack molecular correlates, severely hindering the elucidation of their cellular and organismal functions.

We set out to identify the protein(s) mediating a widely expressed, strongly outwardly-rectifying plasma membrane Cl⁻ current $I_{Cl,H}$ that is detectable only upon marked extracellular acidification and which may play a role in acid-induced cell death (*Auzanneau et al., 2003; Capurro et al., 2015; Lambert and Oberwinkler, 2005; Sato-Numata et al., 2013; Wang et al., 2007*). The underlying channel is most frequently called ASOR (for Acid-Sensitive Outwardly Rectifying anion channel (*Wang et al., 2007*)), although the earlier name PAORAC (Proton-Activated Outwardly Rectifying Anion Channel (*Lambert and Oberwinkler, 2005; Ma et al., 2008*)) provides a better description. At room temperature, ASOR currents are only observable when external pH (pH_o) drops below 5.5, but the threshold of activation shifts to ~6.0 at 37°C (*Sato-Numata et al., 2013*). Analysis of the steep pH-dependence suggests that 3-4 protons are required to open the channel (*Capurro et al., 2015; Lambert and Oberwinkler, 2005*). ASOR currents are strongly outwardly rectifying with almost no currents being observable at negative-inside voltages. This rectification results both from voltage-dependent gating that operates on a 100 ms time scale and from an outwardly-rectifying single channel conductance (*Lambert and Oberwinkler, 2005*) (although others described that single ASOR channels are not rectifying (*Wang et al., 2007*)). ASOR currents ($I_{Cl,H}$) display an SCN⁻>I⁻>NO₃⁻>Br⁻>Cl⁻ permeability sequence. The channel can be blocked by various Cl⁻ transport inhibitors such as DIDS (4,4'-diisothiocyano-2,2'-stilbenedisulfonic acid) and niflumic acid (*Capurro et al., 2015; Lambert and Oberwinkler, 2005*) and by other compounds such as phloretin (*Wang et al., 2007*) and pregnenolone sulfate (PS) (*Drews et al., 2014*). However, none of these inhibitors is specific for ASOR.

The observation of $I_{\text{Cl,H}}$ currents in every investigated mammalian cell type (Auzanneau *et al.*, 2003; Capurro *et al.*, 2015; Fu *et al.*, 2013; Lambert and Oberwinkler, 2005; Ma *et al.*, 2008; Nobles *et al.*, 2004; Sato-Numata *et al.*, 2013; Valinsky *et al.*, 2017; Wang *et al.*, 2007; Yamamoto and Ehara, 2006) suggests that ASOR may be expressed in all tissues. Such a wide expression pattern indicates that this channel has important physiological functions. However, only few mammalian cells are physiologically exposed to an extracellular pH that is acidic enough to open ASOR. It was therefore proposed (Wang *et al.*, 2007) that the channel rather plays a role in pathologies such as cancer or ischemic stroke in which pH_o can drop to pH 6.5 or below (Gillies *et al.*, 2018; Kato *et al.*, 2013; Nedergaard *et al.*, 1991; Thews and Riemann, 2019; Xiong *et al.*, 2004). Indeed, ASOR inhibitors blunted cell swelling and cell death provoked by prolonged exposure to acidic pH_o (Sato-Numata *et al.*, 2014; Wang *et al.*, 2007), suggesting that ASOR-mediated chloride influx may worsen the outcome of ischemic stroke. It seems, however, counterintuitive that a channel that enhances cell death under pathological conditions confers an evolutionary advantage. Alternatively, ASOR might not only be present at the plasma membrane, but also in intracellular compartments such as lysosomes where it would be exposed to an appropriate acidic pH (Lambert and Oberwinkler, 2005).

The molecular identity of ASOR had remained unknown, with several candidates such as LRRC8/VRAC anion channels or CIC-3 Cl^-/H^+ exchangers having been excluded previously (Lambert and Oberwinkler, 2005; Sato-Numata *et al.*, 2016; Sato-Numata *et al.*, 2013). Using a genome-wide siRNA screen we now identified TMEM206 as essential ASOR component. TMEM206, which has two transmembrane domains, was necessary and sufficient for the formation of functional ASOR channels. All tested TMEM206 orthologs from other vertebrates form acid-activated channels which, however, differ moderately in their biophysical properties. Ion-selectivity changing mutations suggest that TMEM206's transmembrane domains, in particular TM2, form ASOR's pore. Finally, partial protection of *TMEM206*^{-/-} cells from acid-induced cell death indicates that ASOR/TMEM206 channels play a detrimental role in pathological conditions that are associated with tissue acidosis.

RESULTS

Identification of TMEM206 as crucial ASOR component

To identify the protein(s) constituting ASOR, we performed a genome-wide siRNA screen using an optical assay for acute ASOR-mediated iodide influx into HeLa cells (**Figure 1A**). Intracellular iodide was detected by fluorescence quenching of inducibly expressed, halide-sensitive and relatively pH-insensitive E²GFP (Arosio *et al.*, 2007). We activated ASOR by exposing cells to acidic extracellular pH (5.0) and simultaneously depolarized their plasma membrane to maximize ASOR currents. To this end, we used an approach which we had used previously (Scheel *et al.*, 2005) to activate CIC-5, a Cl⁻/H⁺-exchanger that displays a similarly strong outward rectification. In HeLa cells we stably co-expressed E²GFP with FaNaC (Lingueglia *et al.*, 1995), a ligand-gated Na⁺ channel from the snail *Cornu aspersum* that is closed until it is activated by the cognate neurotransmitter peptide Phe-Met-Arg-Phe-NH₂ (FMRFamide). FMRFamide application leads to Na⁺ influx that acutely depolarizes the membrane to inside-positive voltages. Concomitant application of 100 mM iodide, pH 5.0 and 20 μM FMRFamide to our engineered HeLa cells induced fast quenching of E²GFP fluorescence (**Figure 1B**). Control experiments omitting either iodide, acidic pH_o, or FMRFamide indicated that a major component of quenching is owed to iodide influx through an acidic pH- and depolarization-dependent process such as ASOR (**Figure 1B, Figure 1—figure supplement 1A-D**). This notion was further supported by applying the inhibitors pregnenolone sulfate and DIDS (Drews *et al.*, 2014) (**Figure 1—figure supplement 1E,F**).

Having established a sensitive assay for ASOR function, we performed a genome-wide siRNA screen using a commercial library containing pools of four siRNAs per gene (**Figure 1C**). The screen was carried out in triplicate and results were ranked according to the maximal slope of quenching. The top hit was TMEM206, a so far uncharacterized membrane protein (**Figure 1D**). The wide tissue expression pattern of TMEM206 indicated by public databases (**Figure 1E**) agreed with the finding that $I_{Cl,H}$ has been found in every cell studied so far (Auzanneau *et al.*, 2003; Capurro *et al.*, 2015; Fu *et al.*, 2013; Lambert and Oberwinkler, 2005; Ma *et al.*, 2008; Nobles *et al.*, 2004; Sato-

Numata et al., 2013; Valinsky et al., 2017; Wang et al., 2007). TMEM206 has orthologs in vertebrates and in the hemichordate *Saccoglossus kowalevskii* (acorn worm) (**Figure 1F**), but there are no homologs in simpler animals or other kingdoms of life. In contrast to many other ion channels, TMEM206 does not form a gene family because it lacks paralogs within the same species (i.e. it is a 'single gene').

After transfection of GFP-tagged human TMEM206 (hTMEM206) into HeLa cells a significant fraction of the protein was found at the plasma membrane (**Figure 2A**). Additionally, TMEM206 appeared to be expressed in intracellular membranes, which, however, might result from heterologous overexpression. Hydropathy analysis suggested the presence of two transmembrane spans (**Figure 2B**). To determine the transmembrane topology of TMEM206, we tested the accessibility of added epitopes by immunofluorescence. Detection of both N- or C-terminally added GFP required permeabilization of the plasma membrane (**Figure 2C,D**), suggesting that both the amino- and the carboxy-terminus of TMEM206 face the cytosol.

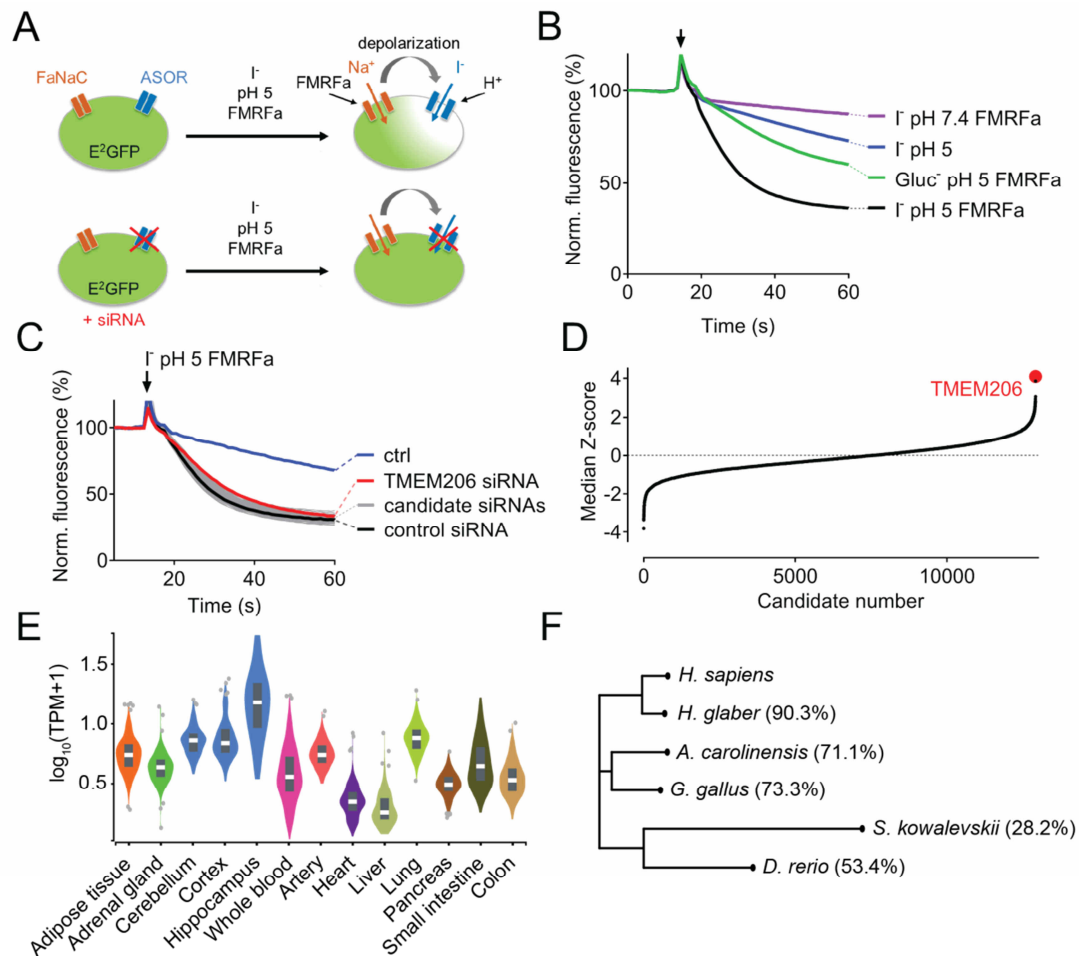


Figure 1. Identification of TMEM206 as ASOR component. (A) Screening assay. Engineered HeLa cells inducibly expressing iodide-sensitive E²GFP and FRMFamide-gated Na⁺ channel FaNaC were acutely exposed to an acidic solution (pH 5) containing 20 μ M FMRFamide and 100 mM I⁻. Iodide influx through ASOR is stimulated both by acidic pH and the depolarization caused by FaNaC-mediated Na⁺-influx and induces quenching of E²GFP fluorescence. Fluorescence quenching is reduced by ASOR knock-down. (B) Assay verification under the conditions used for screening. Addition of I⁻ and FMRFamide at pH 5 (arrow) induces rapid quenching of fluorescence. Less rapid quenching upon omission of either I⁻, FMRFamide or acidic pH suggests that it is caused by I⁻ influx through ASOR, as further supported by inhibition by PS (pregnenolone sulfate) and DIDS (4,4'-diisothiocyano-2,2'-stilbenedisulfonic acid) (**Figure 1—figure supplement 1**). (C) Fluorescence curves from a 384-well plate treated with siRNA against 280 genes, including TMEM206. Fluorescence quenching is specifically slowed by siRNA against TMEM206. (D) Distribution of median Z-scores (mean of 3 replicates) from filtered hits (see Methods). TMEM206 was the top hit. (E) Tissue expression of TMEM206 extracted from the GTEx database (<https://gtexportal.org/home/>; TPM, transcripts per million). (F) Dendrogram depicting similarity between TMEM206 orthologs from human (*Homo sapiens*), African naked mole-rat (*Heterocephalus glaber*), chicken (*Gallus gallus*), green anole lizard (*Anolis carolinensis*), zebrafish (*Danio rerio*) and from the hemichordate acorn worm (*Saccoglossus kowalevski*). Amino-acid sequence identity to human TMEM206 given in brackets. Dendrogram based on a Clustal Omega protein alignment fed into the Simple Phylogeny tool at EMBL-EBI (<https://www.ebi.ac.uk/services>).

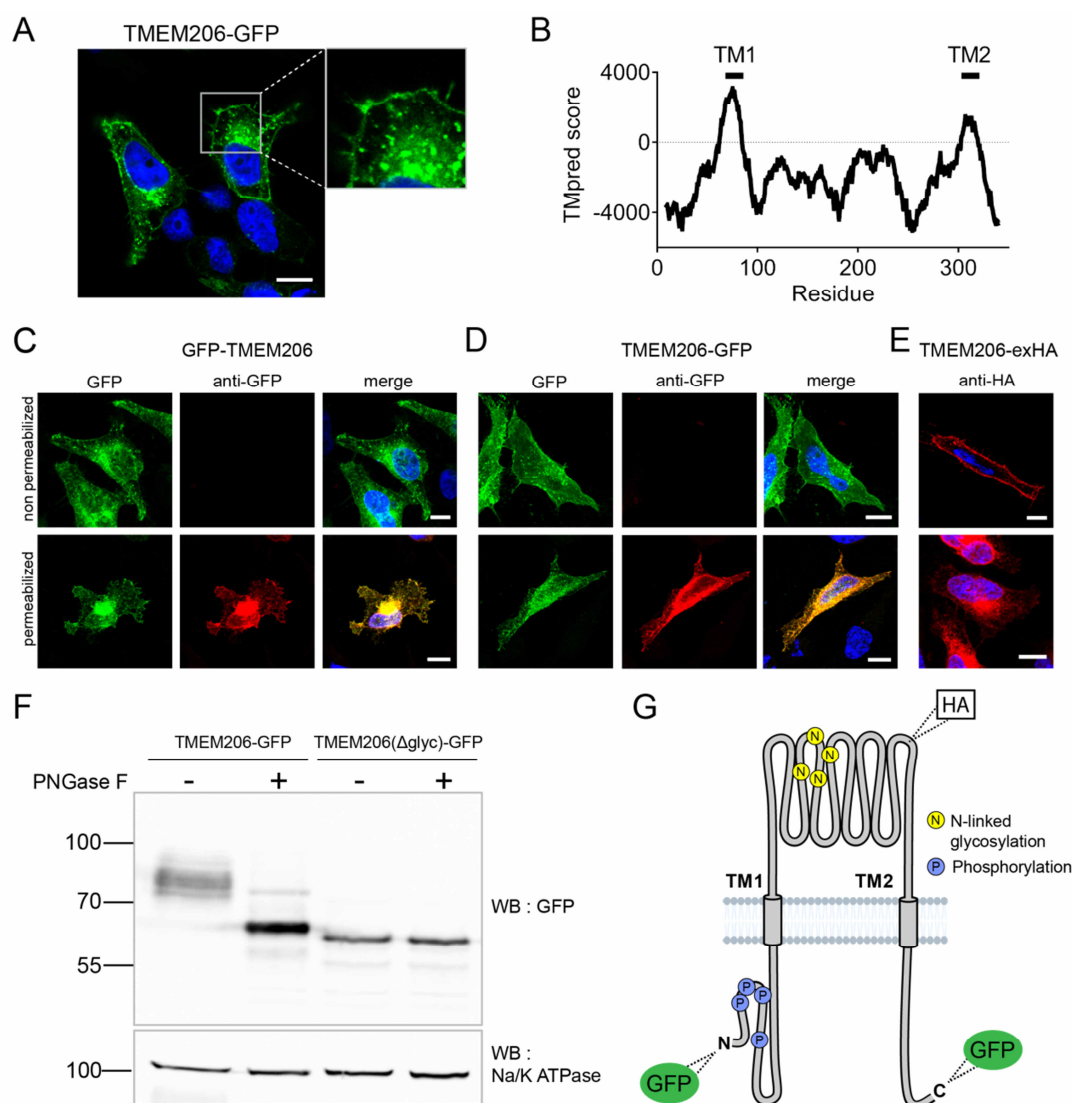


Figure 2. Subcellular localization and transmembrane topology of TMEM206. (A) Subcellular localization of TMEM206 (fused to GFP at the C-terminus) in transfected HeLa cells. A similar localization was observed when the tag was attached to the N-terminus. Scale bar: 10 μ m (B) Hydropathy analysis of TMEM206 using the TMpred server (https://embnet.vital-it.ch/software/TMPRED_form.html) suggests the presence of two transmembrane domains. (C, D) Detection of GFP by its fluorescence (green) or immunocytochemistry (red) in cells transfected with GFP-TMEM206 (C) or TMEM206-GFP (D), without (top panels) or with (lower panels) plasma membrane permeabilization. Scale bars: 10 μ m. (E) A HA-epitope inserted after residue 271 between TM1 and TM2 (G) in the TMEM206-exHA mutant was detected in non-permeabilized cells. (F) Western blot of membranes from HEK cells transfected with TMEM206-GFP or TMEM206(Δ glyc)-GFP in which all 4 predicted N-linked glycosylation sites between TM1 and TM2 were disrupted by mutagenesis. Note the lower molecular weight of TMEM206(Δ glyc)-GFP. Deglycosylation of membrane proteins by PNGaseF reduced the molecular weight of the WT, but not the TMEM206(Δ glyc)-GFP protein. (G) Schematic topology of TMEM206. Predicted glycosylation sites (N), and phosphorylated sites (P) identified in mass spectrometry (<https://www.phosphosite.org/>) are indicated, as well as the location of added epitopes.

A cytosolic localization of the N-terminus is further supported by public databases showing that the amino-terminus of human and rodent TMEM206 can be phosphorylated (**Figure 2G**). An extracellular localization of the TM1-TM2 stretch was suggested by the immunofluorescent detection in non-permeabilized cells of an HA-epitope inserted at position 271 (**Figure 2E,G**). The observation that this stretch is glycosylated further supports its extracellular localization (**Figure 2F**). Only this segment displays consensus sites (N148, N155, N162, N190) for N-linked glycosylation (**Figure 2G, Figure 6—figure supplement 2**). Deglycosylation of WT and mutant TMEM206(Δ glyc), in which all four consensus sites were eliminated, demonstrated that at least one of these sites are used (**Figure 2F**) and hence face the lumen of the ER during biogenesis. We conclude that both N- and C-termini of TMEM206 reside in the cytosol, whereas the TM1-TM2 loop faces the extracellular space (**Figure 2G**).

Human TMEM206 mediates typical ASOR currents

Overexpression of human TMEM206 in HEK cells increased acid-activated Cl^- currents about 10-fold (**Figure 3A,B**). Addition of GFP to either the amino- or carboxy-terminus of TMEM206 only moderately decreased current amplitudes compared to the untagged construct (**Figure 3B**). Currents from overexpressed hTMEM206, irrespective of whether fused to GFP, resembled native $I_{\text{Cl,H}}$. To confirm that TMEM206 is essential for the generation of $I_{\text{Cl,H}}$, we disrupted the *TMEM206* gene in both HEK and HeLa cells using CRISPR-Cas9 genomic editing. To exclude off-target effects, we used three different gRNAs to generate independent KO clones. None of the clonal HEK or HeLa KO cell lines displayed measurable $I_{\text{Cl,H}}$ currents (**Figure 3C-E, Figure 3—figure supplement 1**). Hence, TMEM206 is an indispensable component of ASOR.

Transfection of hTMEM206 rescued $I_{\text{Cl,H}}$ currents of *TMEM206*^{-/-} (KO) HEK and HeLa cells (**Figure 3F-H, Figure 3—figure supplement 1E**). Current characteristics did not differ between transfected WT or KO cells (**Figure 3A,F**). *TMEM206*^{-/-} HEK cells were used to further characterize hTMEM206 in transient overexpression.

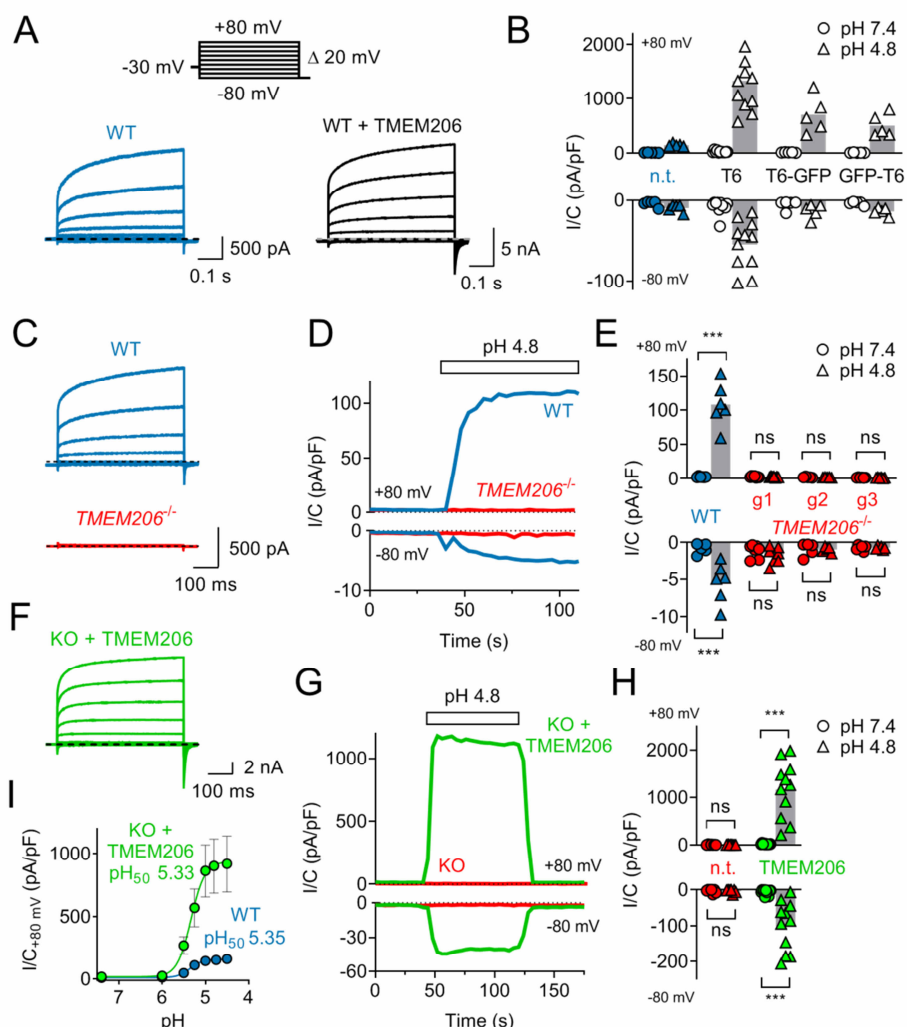


Figure 3. TMEM206 mediates $I_{Ci,H}$ ASOR currents. (A) Voltage-clamp traces of non-transfected (n.t.) and TMEM206-GFP transfected HEK cells at $pH_o = 4.8$, using the protocol shown at the top. (B) Current densities (I/C , at indicated pH_o) at +80 and -80 mV for non-transfected (n.t.) HEK cells and cells transfected with human TMEM206 (T6) fused N- or C-terminally to GFP, or co-expressing untagged TMEM206 with GFP from a separate pEGFP-N1 vector. Transfection increased current levels by 5- to 15-fold (bars, mean). (C) CRISPR-Cas9 mediated genomic disruption of TMEM206 in HEK cells (by guide RNA g1) abolished native acid-activated ASOR currents ($I_{Ci,H}$) as determined at $pH_o = 4.8$. Clamp protocol as in (A). (D) Outward and (smaller) inward $I_{Ci,H}$ currents rapidly activate in WT, but not $TMEM206^{-/-}$ HEK cells when pH_o is lowered from 7.4 to 4.8. (E) Native $I_{Ci,H}$ of HEK cells is abolished in 3 independent $TMEM206^{-/-}$ cell lines generated with different guide RNAs (g1 – g3). (bars, mean; ***, $p < 0.001$, one-way ANOVA with Bonferroni correction) (F) Voltage-clamp traces of $TMEM206^{-/-}$ HEK cells transfected with human TMEM206 reveal large $I_{Ci,H}$. Clamp protocol as in (A). (G) Rapid activation and deactivation of $I_{Ci,H}$ in TMEM206-transfected $TMEM206^{-/-}$ HEK cells when pH_o is changed between 7.4 and 4.8. Currents monitored using a ramp protocol. (H) $I_{Ci,H}$ densities at indicated voltages and pH_o of non-transfected (n.t.) or TMEM206-transfected $TMEM206^{-/-}$ HEK cells (bars, mean; ***, $p < 0.001$, one-way ANOVA with Bonferroni correction). (I) pH_o -dependence of $I_{Ci,H}$ (at +80 mV) from native HEK cells and TMEM206-transfected $TMEM206^{-/-}$ HEK cells. pH_{50} , pH_o at which current is half maximal.

Currents of overexpressed hTMEM206 (measured at acidic pH_o) showed the typical outward-rectification and activation kinetics of ASOR (Capurro *et al.*, 2015; Lambert and Oberwinkler, 2005; Wang *et al.*, 2007) after depolarizing voltage steps (**Figure 3C,F**). However, I/V curves for these measurements must be interpreted with some care since the very large currents (>15 nA) and the absence of series resistance compensation may have resulted in confounding voltage clamp errors. The pH_o-dependence of native $I_{Cl,H}$ was indistinguishable from that of TMEM206-transfected KO HEK cells (**Figure 3I,H**). The extent of acidification needed for half-activation of $I_{Cl,H}$ (pH_o ~5.3) agrees with previous studies (Capurro *et al.*, 2015; Lambert and Oberwinkler, 2005; Sato-Numata *et al.*, 2013; Wang *et al.*, 2007).

Measurements of reversal potentials of hTMEM206-transfected cells (**Figure 4A,B**) revealed a $SCN^- > I^- > NO_3^- > Br^- > Cl^-$ permeability sequence that is typical for ASOR (Capurro *et al.*, 2015; Lambert and Oberwinkler, 2005). Replacement of extracellular Cl^- by either gluconate⁻ (**Figure 4C**) or SO_4^{2-} (**Figure 4D**) not only abolished outward, but also inward currents which are carried by anion efflux. Since we had replaced extracellular, but not intracellular Cl^- , these observations suggest that gluconate⁻ and SO_4^{2-} (or HSO_4^- , a minor species with which SO_4^{2-} is at equilibrium and whose abundance will be increased by the acidic pH) block the outward movement of Cl^- through ASOR/TMEM206 channels. Alternatively, ASOR may require activation by extracellular chloride. Native $I_{Cl,H}$ is inhibited by several compounds (Capurro *et al.*, 2015; Drews *et al.*, 2014; Lambert and Oberwinkler, 2005), but none of these is specific for ASOR. Acid-activated currents from overexpressed TMEM206 were efficiently blocked by DIDS, niflumic acid, and pregnenolone sulfate (PS, **Figure 4E-H**). As described for native $I_{Cl,H}$ (Drews *et al.*, 2014), the block by PS was fast and reversible (**Figure 4F**) and affected both outward and inward currents (**Figure 4G**). We conclude that overexpressed TMEM206 shares all essential properties with native ASOR currents ($I_{Cl,H}$).

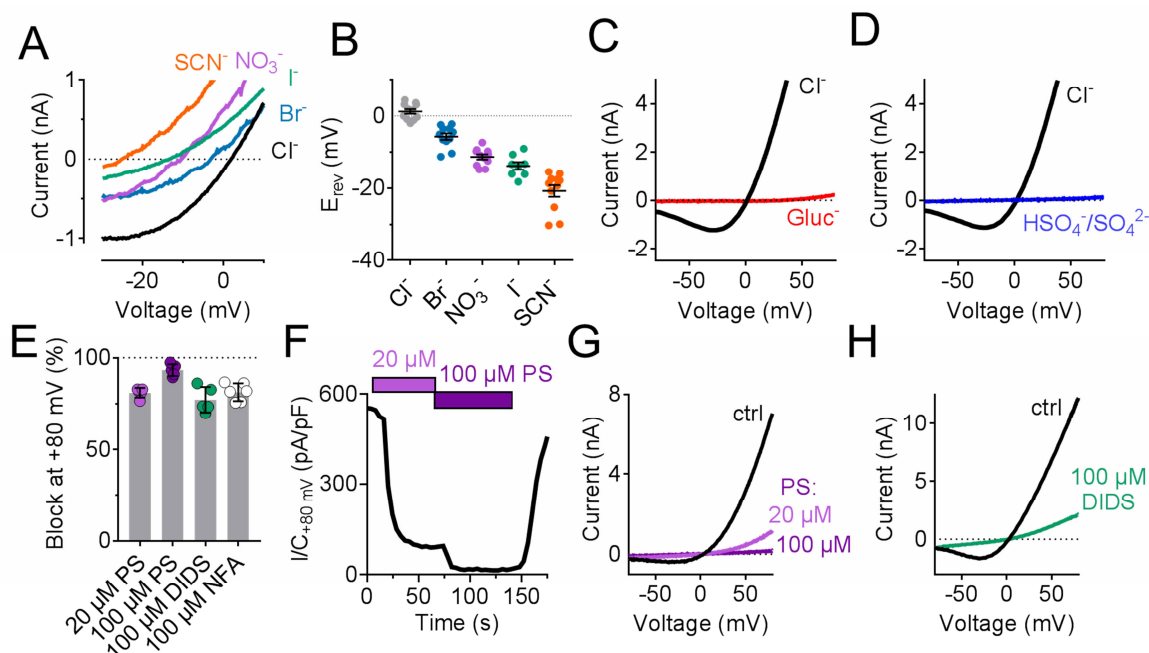


Figure 4. Ion selectivity and inhibitor sensitivity of TMEM206/ASOR channels. (A) Example traces of $I_{Cl,H}$ (elicited by voltage ramps) from TMEM206-transfected $TMEM206^{-/-}$ HEK cells upon equimolar replacement of extracellular NaCl (150 mM) by the sodium salts of the indicated anions. The intracellular solution contained 150 mM CsCl. The voltage at which $I=0$ defines the reversal potential. (B) Reversal potentials E_{rev} . (C) Upon replacement of extracellular Cl⁻ by gluconate, or (D) by HSO₄⁻/SO₄²⁻, no currents discernible from background were detected (at pH_o 4.8). (E) Mean inhibition (%) of $I_{Cl,H}$ from TMEM206-transfected $TMEM206^{-/-}$ HEK cells (measured at +80 mV, pH_o 4.8) by various inhibitors of ASOR. PS, pregnenolone sulfate; DIDS, 4,4'-diisothiocyano-2,2'-stilbenedisulfonic acid; NFA, niflumic acid. (F) Fast and reversible block of $I_{Cl,H}$ by PS. (G) Example I/V curves of $I_{Cl,H}$ from TMEM206-transfected $TMEM206^{-/-}$ HEK cells exposed to different PS concentrations. (H) Same for block by DIDS.

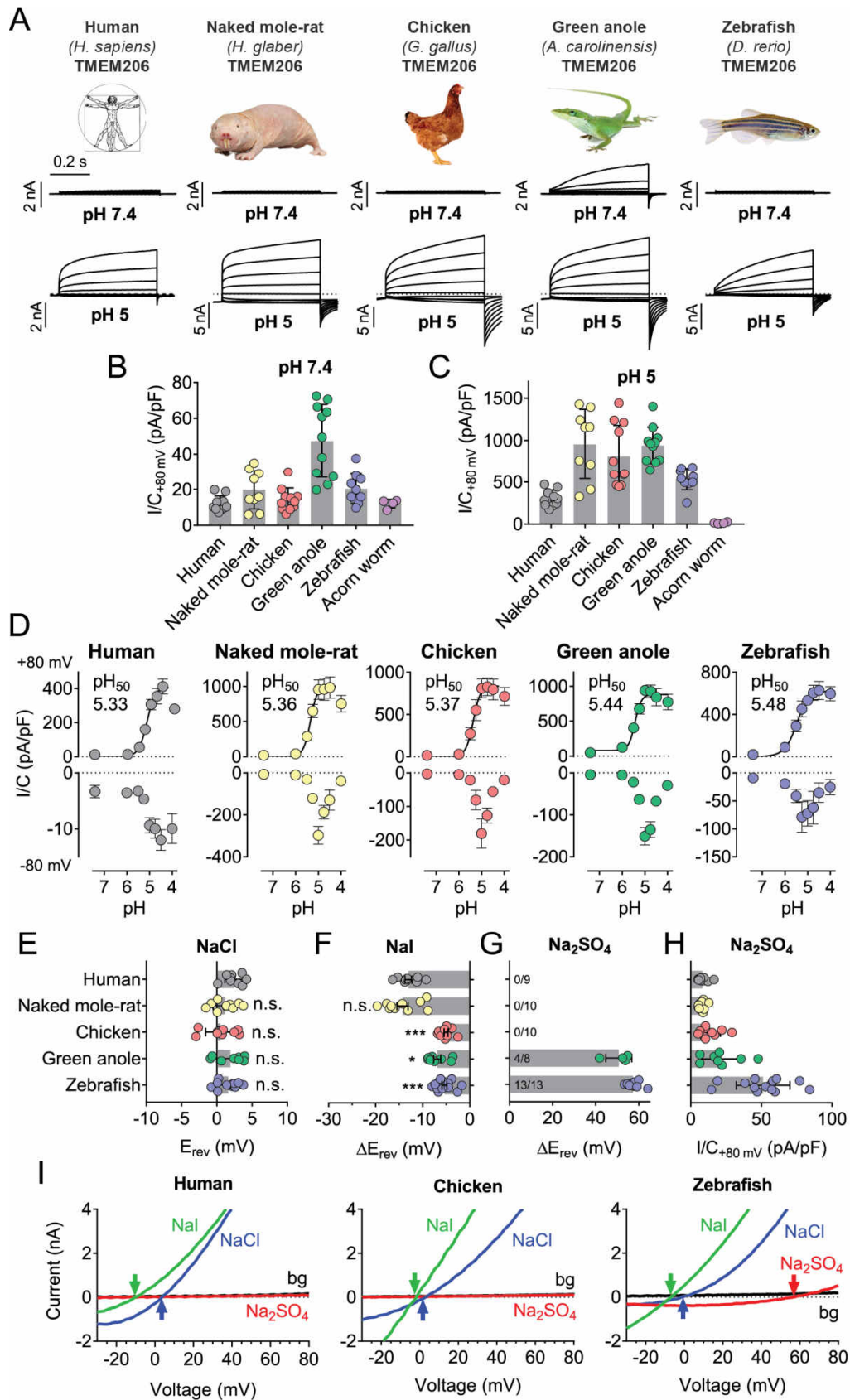
TMEM206 proteins from other species mediate moderately different $I_{Cl,H}$ currents

We asked whether TMEM206 proteins from other clades also function as ASORs and transfected orthologs from the green anole lizard (*Anolis carolinensis*), chicken (*Gallus gallus*), zebrafish (*Danio rerio*) and from the hemichordate acorn worm (*Saccoglossus kowalewski*) into $TMEM206^{-/-}$ HEK cells. We also tested TMEM206 from naked mole-rats (*Heterocephalus glaber*), mammals displaying various unusual properties including insensitivity to acidic pain (Browe et al., 2018; Edrey et al., 2011; Park et al., 2008) and decreased acid-induced neuronal cell death (Husson and Smith, 2018).

Except for the evolutionarily distant hemichordate protein, which was retained in the endoplasmic reticulum (ER), all orthologs were expressed at the plasma membrane (**Figure 5—figure supplement 1**). All plasma-membrane expressed orthologs mediated robust acid-activated outwardly rectifying $I_{Cl,H}$ currents (**Figure 5A,C**). These currents, however, differed in detail. Strikingly, TMEM206 from the reptile *Anolis carolinensis* mediated outwardly-rectifying currents already at pH_o 7.4. These currents were further steeply activated when pH_o dropped below 6 (**Figure 5A-D**). Whereas currents from all orthologs activated at a threshold of $\sim pH_o$ 6, their currents decreased differently at $pH_o < 5$ (**Figure 5D**). The current decrease at more acidic pH questions the reliability of determining Hill coefficients for the activation of ASOR by H^+ ions (Capurro et al., 2015; Lambert and Oberwinkler, 2005; J. Yang et al., 2019). Differences between orthologs were also observed in depolarization-activated gating and current rectification (**Figure 5A,D**), and most importantly in anion permeability (**Figure 5E-I**). Whereas all orthologs displayed the same Cl^- permeability (**Figure 5E,I**), the mammalian ASORs (human and naked mole-rat) showed a higher iodide/chloride permeability ratio than their chicken, anole and zebrafish orthologs (**Figure 5F,I**). ASORs from green anole and zebrafish displayed a significant SO_4^{2-} (or HSO_4^-) permeability which was undetectable with the other tested orthologs (**Figure 5G-I**). These results suggest that all vertebrate TMEM206 proteins mediate ASOR currents and participate in forming its ion-selective pore.

(Next Page)

Figure 5. Properties of TMEM206 orthologs. (A) Typical voltage clamp-traces of indicated TMEM206 orthologs transiently expressed in *TMEM206*^{-/-} HEK cells at pH_o 7.4 (top traces) or pH_o 5.0 (bottom traces). Clamp protocol as in Figure 3A. (B) Mean current amplitudes of tested orthologs at pH_o 7.4 and (C) pH_o 5.0. The ortholog from acorn worm failed to give currents because of its retention in the endoplasmic reticulum (**Figure 5—figure supplement 1F**). (D) pH_o -dependence of currents from various orthologs at +80 mV (top) and -80 mV (bottom) as determined from voltage ramps. (E-G) Reversal potentials E_{rev} of indicated orthologs with external NaCl (E), NaI (F) and Na_2SO_4 (G). Significant currents with Na_2SO_4 could be measured only for green anole and zebrafish. ΔE_{rev} , difference to E_{rev} for NaCl. All currents measured at pH_o 5.25. (H) Current densities (at +80 mV, pH_o 5.25) with external Na_2SO_4 (I) Example traces showing determination of E_{rev} (indicated by arrows) for human, chicken and zebrafish orthologs. bg, background current at pH_o 7.4 (n = 8-13 cells; *, p < 0.033; ***, p < 0.001; Kruskal-Wallis test, Dunn's multiple comparison correction; error bars, SD (B,C) or SEM (D-H)).



Cysteine-scanning mutagenesis reveals pore-lining residues of TMEM206

To identify pore-lining residues of ASOR we used a systematic substituted-cysteine accessibility approach (Holmgren et al., 1996). After having ascertained that the cysteine reagent MTSES lacks significant effects on human WT channels (**Figure 6A,B**), we generated point mutants in which all residues of both hTMEM206 transmembrane spans were singly replaced by cysteines (**Figure 6B**). Except for two mutants in TM2 (L309C and K319C), all constructs elicited acid-activated $I_{Cl,H}$ currents when transfected into *TMEM206*^{-/-} HEK cells (**Figure 6B,C**, **Figure 6—figure supplement 1**). However, current amplitudes and properties were often changed (**Figure 6—figure supplement 1**). Only one mutant in TM1 (L84C) showed a marked response to cysteine modification (**Figure 6B,C**). Application of MTSES to this mutant, which changes a residue close to the predicted external end of TM1, increased currents selectively at negative voltages (**Figure 6B,C**). TM2, which is less hydrophobic than TM1 (**Figure 2B**) and may form an amphipathic α -helix (**Figure 6—figure supplement 2**), contained a larger number of responsive cysteine-substituted residues (**Figure 6B,C**). These residues were not only found close to the external end of TM2 (W304), but also close to the center (G312) and more towards the cytoplasmic end of TM2 (L315, A316) (**Figure 6B,C**). These residues failed to clearly cluster on one side of the postulated α -helix (**Figure 6—figure supplement 2A**). Depending on the mutant, MTSES exposure increased or decreased $I_{Cl,H}$ amplitudes (**Figure 6A-C**) or changed current rectification (**Figure 6B-C**). Consistent with a covalent modification of cysteine residues, the effects of MTSES appeared irreversible (**Figure 6A**). Strikingly, several cysteine mutants showed robust outwardly-rectifying currents already at pH_o 7.4 (**Figure 6D,E**). These could be further stimulated by exposure to acidic pH_o (**Figure 6F**).

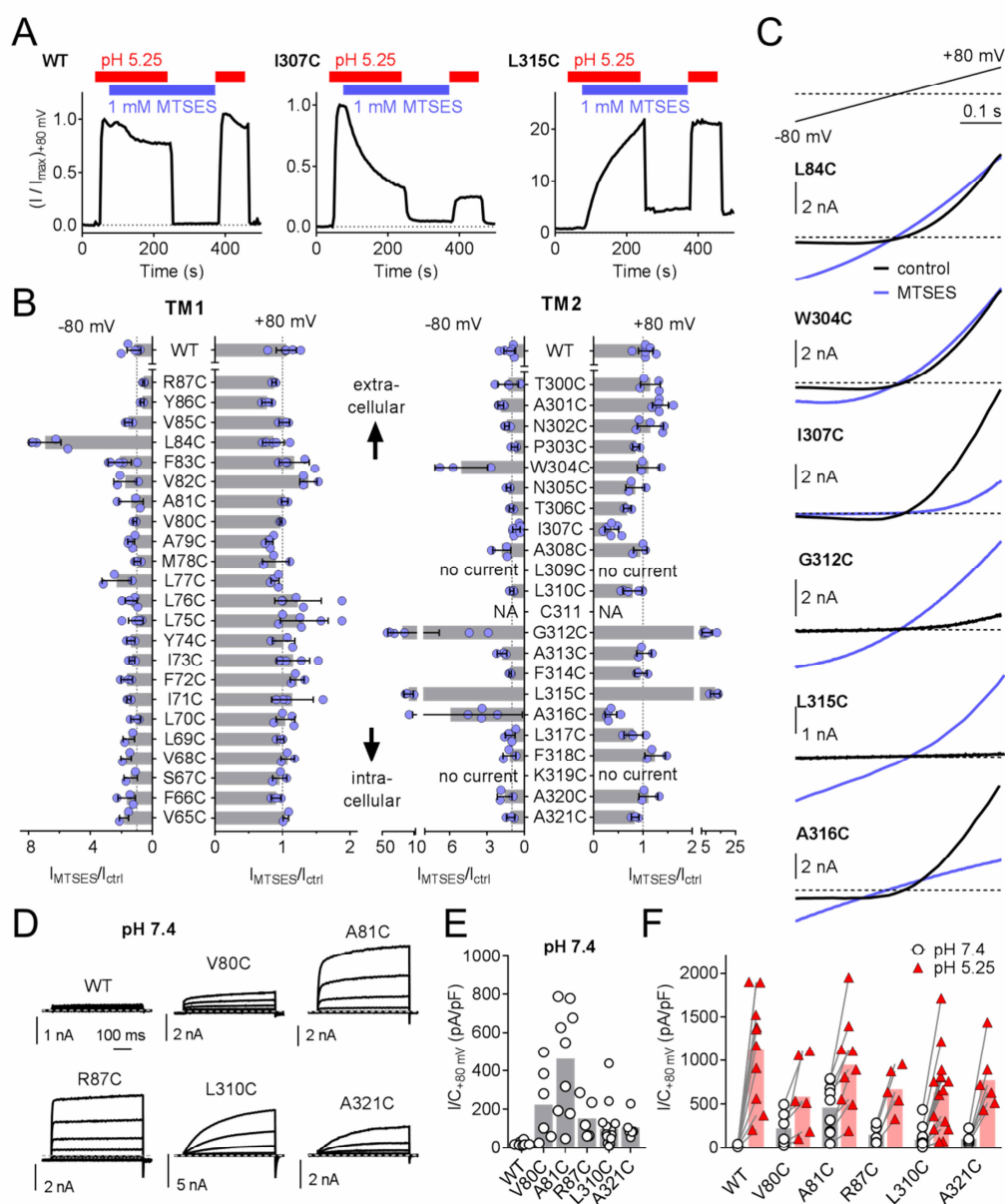


Figure 6. Substituted cysteine accessibility scan of TMEM206 transmembrane domains. (A) Effect of MTSES on currents from WT and mutant TMEM206-transfected *TMEM206*^{-/-} cells. MTSES had no effect on WT TMEM206, but acutely and irreversibly decreased or increased $I_{\text{Cl,H}}$ of I307C and L315C mutants, respectively. Note that acidic pH_o does not interfere with MTSES reactivity. The protocol was designed to be able to detect potential effects of MTSES at pH 7.4. **(B)** Ratio of current before (I_{ctrl}) and after (I_{MTSES}) exposure to MTSES, at +80 and -80 mV. Mutants are grouped by location within the two TMDs of TMEM206. For current amplitudes of non-modified cysteine mutants, see **Figure 6—figure supplement 1**. **(C)** Current traces of selected mutants elicited by voltage ramps (top) before and after MTSES-application. **(D–F)** Cysteine mutants showing currents at pH_o 7.4. **(D)** Voltage-clamp traces of WT TMEM206 and indicated mutants at pH 7.4. Clamp protocol as in Figure 3A. **(E)** Mean current densities at pH 7.4. **(F)** All mutants still responded to low pH_o.

Of note, some cysteine mutants displayed changed ion selectivity (**Figure 7A,B,F-H**). Whereas changes in I^- permeability were relatively small (most evident for L84C and R87C, **Figure 7B,F**), the same two mutants in TM1 displayed a small sulfate permeability that was undetectable in WT hTMEM206, allowing us to determine reversal potentials (**Figure 7A,B,G-H**). Residues giving an interesting effect upon cysteine modification were further mutated to other, mostly charged, residues. This yielded detectable $I_{Cl,H}$ in many cases (**Figure 7—figure supplement 1**), with a number of mutants displaying slightly changed iodide permeability (**Figure 7C,D,F**) or marked increases in SO_4^{2-}/HSO_4^- conductance (**Figure 7C,G-H**). Strikingly, replacement of L315 by negatively charged aspartate introduced a large ~22 mV shift of the reversal potential in NaCl medium (**Figure 7D,E**), indicative of a loss of anion selectivity. Together with the strong MTSES effects on the L315C mutant (**Figure 6A-C**) these data suggest that this TM2 residue importantly determines pore properties of ASOR. Of note, with the exception of R87, all functionally important residues identified here in TM1 and TM2 are highly conserved (**Figure 6—figure supplement 2B**). In conclusion, residues along the length of TM2 and towards the external end of TM1 may be close to, or line, the pore of ASOR channels.

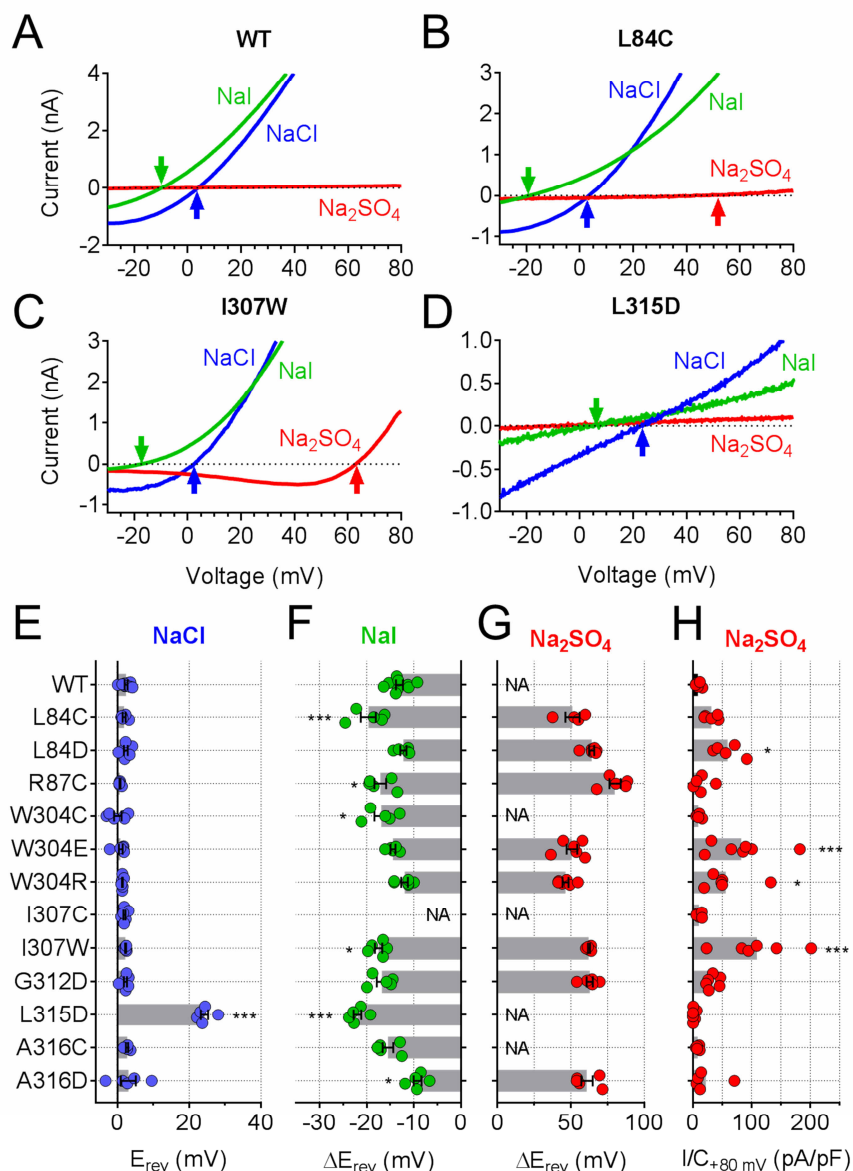


Figure 7. Ion selectivity changes of mutants in transmembrane domains. (A-D) Current traces of WT (A), L84C (B), I307W (C) and L315D (D) TMEM206 expressed in *TMEM206*^{-/-} HEK cells measured with indicated extracellular solutions at pH 5.25. Reversal potentials E_{rev} indicated by arrows. With WT and L315D TMEM206 currents in Na₂SO₄ were too small for E_{rev} determination. Currents were elicited by voltage ramps as in Figure 6C. (E) Reversal potential E_{rev} with extracellular NaCl (***, $p < 0.001$ vs. WT; one-way ANOVA, Bonferroni correction). (F, G) Shift of reversal potentials (ΔE_{rev}) with extracellular NaI (F) or Na₂SO₄ (G) relative to that measured with NaCl (NA, not applicable (currents not significantly above background or E_{rev} not stable over time (I307C))). (H) Current densities at +80 mV with extracellular Na₂SO₄ at pH 5.25. *, $p < 0.033$ and ***, $p < 0.001$ vs. WT; one-way ANOVA, Bonferroni correction. No statistical analysis was performed on the data in (G).

Role of TMEM206/ASOR channels in acidotoxicity

ASOR was suggested (Sato-Numata *et al.*, 2014; Wang *et al.*, 2007) to play a role in acidotoxicity because DIDS and phloretin, compounds inhibiting ASOR but also several other channels or transporters, reduced acid-induced necrotic cell death of HeLa cells (Wang *et al.*, 2007) and cultured cortical neurons (Sato-Numata *et al.*, 2014). We exposed both WT HEK cells, and two separately derived *TMEM206*^{-/-} clones, for 2 hours to acidic medium (pH_o 4.5) in the absence and presence of PS. Cell death was assessed by propidium iodide staining and normalized to the total number of cells as determined by Hoechst 33342 labeling. Indeed, disruption of TMEM206 partially protected against acid-induced cell death (**Figure 8A,B**). A roughly similar protection was seen with PS in WT but not in *TMEM206*^{-/-} cells (**Figure 8A,B**), suggesting that the effect of PS on cell viability results from its ability to block ASOR (Drews *et al.*, 2014). In conclusion, ASOR/TMEM206 channels enhance acidotoxicity.

This form of cell death had been attributed to cell swelling caused by osmotic gradients generated by ASOR-mediated Cl⁻ influx (Sato-Numata *et al.*, 2014; Wang *et al.*, 2007). When exposed to pH_o 4.2, both WT and *TMEM206*^{-/-} HEK cells increased their volume within the first three minutes as indicated by increased calcein fluorescence (**Figure 8C**). Agreeing with the hypothesis (Sato-Numata *et al.*, 2014; Wang *et al.*, 2007) that the parallel opening of ASOR and ASICs (acid-sensitive Na⁺-channels (Gründer and Pusch, 2015; Waldmann *et al.*, 1997)) leads to an electrically coupled influx of osmotically active Na⁺ and Cl⁻, WT cells swelled faster than *TMEM206*^{-/-} cells. Whereas WT cells subsequently decreased their volume, *TMEM206*^{-/-} cells failed to shrink (**Figure 8C**). Likewise, the ASOR inhibitor pregnenolone sulfate (100 μM) (Drews *et al.*, 2014) slowed the initial swelling and inhibited the subsequent shrinkage (**Figure 8D**). Similar effects of ASOR disruption or block were observed with HeLa cells (**Figure 8—figure supplement 1**). Hence, contrasting with the conclusion of Wang *et al.* (Wang *et al.*, 2007), our data suggest that the role of ASOR/TMEM206 in acidotoxicity cannot be explained by a sustained volume increase of acid-exposed cells.

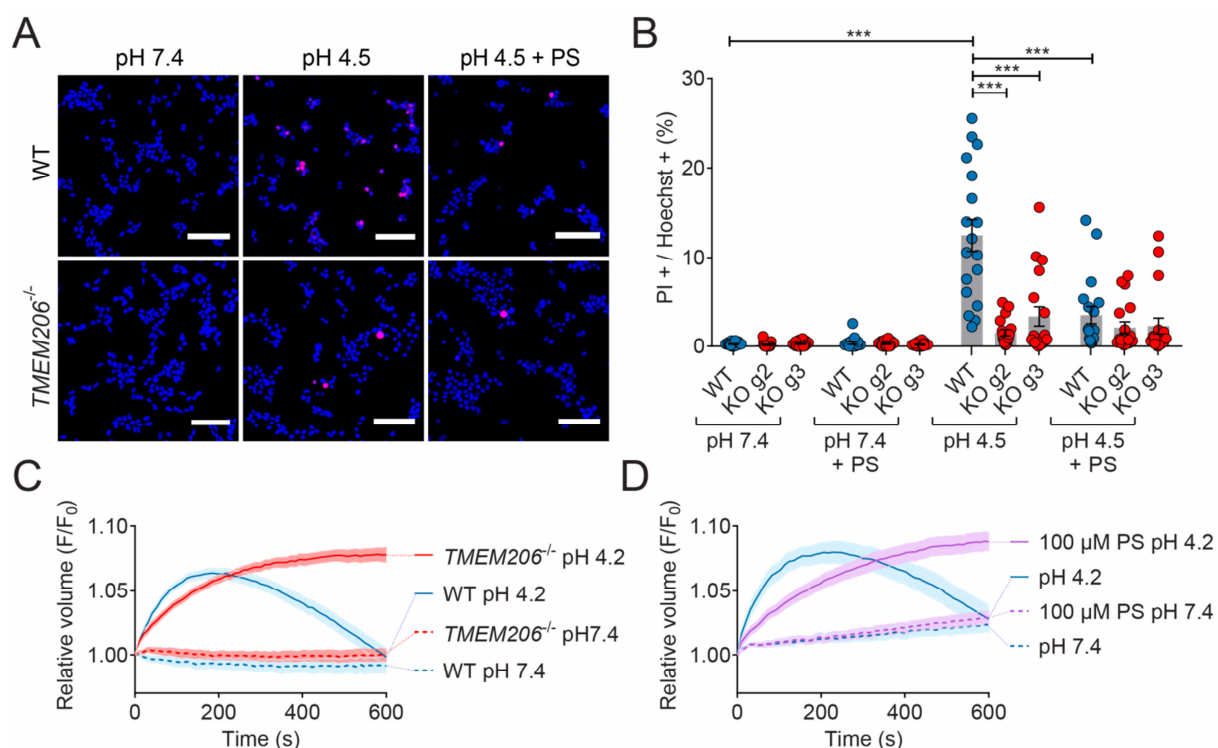


Figure 8. Role of TMEM206/ASOR channels in acid-induced cell death and volume regulation.

(A) Representative pictures of WT and *TMEM206*^{-/-} HEK293 cells (clone 2E5) double stained with propidium iodide (PI, red) and Hoechst 33342 (blue) after incubation for 2 h with control (pH 7.4) or acidic (pH 4.5) solution, also containing the potent inhibitor of TMEM206 pregnenolone sulfate (PS) at 100 μ M or not. In this assay, dead cells are stained with PI, membrane impermeant, whereas Hoechst 33342, which is permeant, stains nuclei of all cells. Scale bars: 100 μ m (B) Quantification of PI positive cells over the total number of cells, determined by Hoechst staining, in WT and 2 independent *TMEM206*^{-/-} HEK clones generated with different guide RNAs (g2, g3). For quantification, 10x objective microscopic fields were randomly chosen. Bars represent mean \pm SEM. Data were acquired in 3 independent experiments and analyzed by using one-way ANOVA with post hoc multiple comparisons using the Tukey's test: *** p < 0.001 (C,D) Influence of TMEM206 ablation (C) or block by 100 μ M pregnenolone sulfate (PS) (D) on acid-induced cell volume changes of HEK293 cells as monitored by calcein fluorescence. Mean of eight measurements; error range, SEM. Similar results were obtained in three experiments, and similar effects were observed with HeLa cells (Figure 8—figure supplement 1).

DISCUSSION

We have identified TMEM206 as essential, pore-forming subunit of ASOR, a widely expressed acid-sensitive outwardly rectifying anion channel. TMEM206 lacks homologous proteins within any given species. Both transmembrane domains of TMEM206, most importantly TM2, likely participate in forming its anion-selective pore. TMEM206/ASOR channels are apparently present in all vertebrates and share activation by markedly acidic pH as prominent feature. TMEM206/ASOR channels play a role in pathologies associated with a marked decrease in extracellular pH. Although their wide expression pattern across tissues and vertebrates suggests important physiological functions for all cells, these roles remain to be determined. The identification of TMEM206 as ASOR channel-forming protein in this work and in a recently published independent study by Qiu and coworkers (*J. Yang et al., 2019*) is an essential step forward towards the elucidation of these roles.

TMEM206 fully constitutes ASOR

The dissimilar biophysical characteristics of currents elicited by TMEM206 orthologs and the changes observed with mutants demonstrate that TMEM206 proteins constitute the pore of ASOR channels. With only two exceptions, all cysteine-substituted channels gave currents. However, their amplitudes were reduced by several mutations which were distributed along the length of either TM1 or TM2 (**Figure 6—figure supplement 2**). Whereas this result only shows that TMEM206 is (somehow) important for ASOR currents, the observed functional effects of MTSES on various cysteine mutants additionally indicate that the respective cysteines are accessible from the aqueous phase. If such residues are located in a membrane-embedded region, they are probably close to, or line, the pore. More convincing evidence that TMEM206 proteins form the channel comes from mutations that change intrinsic channel properties such as rectification or ion selectivity (a property of the pore). Several mutations, both at the extracellular end of TM1 and at various positions along TM2, moderately changed ASOR's I^- permeability. Moreover, whereas WT hTMEM206 lacked measurable currents with extracellular Na_2SO_4 , TMEM206 from anole and zebrafish, and a surprisingly large

number of mutants, displayed robust currents with extracellular sulfate. These mutations may markedly increase the channel's SO_4^{2-} (or HSO_4^-) permeability, or relieve a channel block that was indicated by the absence of inward currents (efflux of Cl^-) in the presence of extracellular sulfate. The most striking evidence for TMEM206 forming ASOR's pore comes from the loss of anion selectivity with the L315D mutant. The ~ 22 mV positive shift of the reversal potential indicates a marked increase in cation conductance (E_{rev} for Na^+ or H^+ are $>+120$ mV and $+113$ mV, respectively) that might be due to electrostatic interactions of the newly introduced negatively charged aspartate with the permeant ion. Our data suggest that the whole length of TM2, with a participation of the outer end of TM1, lines the pore of ASOR. This is reminiscent of crystallographically resolved pore structures of ASIC channels with which ASOR shares the transmembrane topology, but no obvious sequence homology. Intriguingly, ASICs and other ENaC/Deg channels display a glycine residue (in the 'GxS' motif) in TM2 that plays an important role in determining pore properties and gating (*Baconguis et al., 2014; Li et al., 2011*). Whether G212, which is located at a similar distances from the ends of TM2, plays a comparable role must await determination of TMEM206/ASOR channel structures.

Heterologous expression of all tested vertebrate orthologs led to large acid-induced currents. As shown with human TMEM206, biophysical properties of these currents did not differ significantly from native $I_{\text{Cl,H}}$. Hence completely functional ASOR channels may only require TMEM206. However, our results cannot strictly exclude that TMEM206 lines the pore together with other, unknown proteins. This scenario would require that such proteins are produced in excess endogenously since overexpression of hTMEM206 or its orthologs elicited currents >10 -fold larger than native $I_{\text{Cl,H}}$. It further requires that such a putative additional pore-forming protein from HEK cells is able to associate with all the vertebrate orthologs tested. If ASOR's pore is exclusively constituted by TMEM206 proteins that cross the membrane only twice, TMEM206 must form at least a dimer to build a protein-enclosed pore. ASICs and other members of the DEG/ENaC channel family, which display a transmembrane topology similar to TMEM206, form trimeric homo- or heteromeric channels (*Jasti et al., 2007*). Likewise ASOR channels might be formed by TMEM206 trimers.

Role of acid-activated chloride current

With the exception of the hemichordate TMEM206, which shows marked sequence divergence and was retained in the ER, all tested TMEM206 proteins gave strongly outwardly rectifying Cl^- currents that were activated by extracellular acidification in excess of $\sim \text{pH}_o$ 6. The strong rectification might be physiologically irrelevant since all orthologs gave currents also at negative voltages and because inside-positive voltages are rarely reached *in vivo*, in particular in non-excitable cells. By contrast, the conserved activation by acidic pH_o appears crucial and poses the question where and when such pH values might be reached. Mammalian ASORs require slightly less acidic pH for activation at physiological temperatures (37°C) (Sato-Numata *et al.*, 2013; Sato-Numata *et al.*, 2014), but this consideration seems irrelevant for the reptile and fish orthologs.

Only a few cell types in the mammalian organism are physiologically exposed to an extracellular pH that is more acidic than pH 6.0. These include cells in the stomach and duodenum, renal medullary collecting duct (Benigele *et al.*, 1983) and acid-secreting osteoclasts and macrophages (Silver *et al.*, 1988), but it is unclear whether ASOR is expressed in the relevant membranes of these polarized cells. Moreover, it is unlikely that an important function in a small subset of cells has resulted in an almost ubiquitous expression of ASOR during evolution. On the other hand, intracellular compartments such as endosomes and lysosomes, which can be acidified down to pH 4.5, would provide an ideal environment for ASOR activity. Here ASOR might facilitate luminal acidification by shunting currents of the proton-ATPase as described for endosomal CLC Cl^- transporters (Gunther *et al.*, 1998; Jentsch, 2007; Piwon *et al.*, 2000). Interestingly, vesicular CLCs also show strong outward-rectification, but unlike ASOR are $2\text{Cl}^-/\text{H}^+$ -exchangers that are inhibited by luminal (or extracellular) acidification (Jentsch, 2007; Jentsch and Pusch, 2018; Scheel *et al.*, 2005). Hence presence of both ASOR and CLCs on endolysosomes might allow for a differential regulation of vesicular membrane voltage and ion concentrations. However, CLC-7 is believed to be the main Cl^- transporter of lysosomes (Graves *et al.*, 2008; Kornak *et al.*, 2001) and immunocytochemistry showed prominent plasma membrane expression of all examined vertebrate ASOR orthologs. Although the variable cytoplasmic labeling observed upon

TMEM206 overexpression may have resulted from overexpression and showed no obvious co-localization with the lysosomal marker lamp-1 in preliminary experiments, we feel that a more thorough investigation of an additional localization of ASOR in intracellular compartments may be warranted.

When speculating about biological roles of ASOR it is instructive to compare it to acid-sensitive ASIC channels (Waldmann *et al.*, 1997; Wemmie *et al.*, 2013). Besides being cation channels, ASICs differ from ASOR by their larger molecular diversity (four different subunits can assemble to various homo- and hetero-trimers), rapid inactivation and the degree of pH-sensitivity. Depending on the isoform, their pH_{50} for activation ranges between ~ 4.8 and ~ 6.6 (Gründer and Pusch, 2015; Wemmie *et al.*, 2013), values that are up to more than 1 pH unit more alkaline than that of ASOR ($\text{pH}_{50} \sim 5.3$). Hence several physiological functions of ASICs are unlikely to have equivalents with ASOR. For instance, postsynaptic ASICs may enhance excitatory synaptic transmission by opening in response to a drop in pH in the synaptic cleft that is caused by exocytosis of the acidic contents of synaptic vesicles (Chu and Xiong, 2012; Gründer and Pusch, 2015; Huang *et al.*, 2015). Even if ASOR would be expressed postsynaptically, the estimated drop in pH_o (Gründer and Pusch, 2015) seems to be too small for its activation. ASICs also have roles in peripheral pain sensation (Waldmann *et al.*, 1997; Wemmie *et al.*, 2013). If expressed on appropriate sensory neurons, such a function is imaginable also for ASOR because the high intracellular Cl^- concentration of peripheral neurons would allow for a depolarizing Cl^- -efflux (Funk *et al.*, 2008). Strikingly, naked mole-rats are insensitive to acid-induced pain, but their ASIC channels show normal pH-sensitivity (Smith *et al.*, 2011). We likewise found here that TMEM206/ASOR channels of that species display normal pH-sensitivity. The pH-insensitivity of mole-rats may rather be due to a changed pH-sensitivity of the Na^+ -channel $\text{Na}_v1.7$ (Eigenbrod *et al.*, 2019; Smith *et al.*, 2011).

Of note, ASIC channels are involved in various neurological pathologies that are associated with acidic pH_o (Huang *et al.*, 2015; Wemmie *et al.*, 2013), including stroke (Xiong *et al.*, 2004) and multiple sclerosis (Friese *et al.*, 2007). Likewise, based on protective effects of non-specific ASOR inhibitors, Okada and colleagues proposed that

ASOR plays a role in acid-induced cell death of epithelial cells (Wang *et al.*, 2007) and neurons (Sato-Numata *et al.*, 2014). Using *TMEM206*^{-/-} cells, we now ascertained that genetic ablation of TMEM206/ASOR channels partially protects cells from cell death provoked by strongly acidic pH_o (4.5). Interestingly, when compared to mice, cortical neurons of naked mole rats are resistant to acid-induced cell death (at pH 5.0) (Husson and Smith, 2018). Since neither the pH-response of ASICs (Smith *et al.*, 2011) nor of ASOR (this work) is changed in that species, the explanation for this resistance may be due to channel expression levels or other factors.

It has been proposed (Wang *et al.*, 2007) that ASOR-dependent, acid-induced cell death results from sustained cell swelling owed to the parallel influx of Na⁺ and Cl⁻ through acid-activated ASIC and ASOR channels, respectively. Whereas in our experiments WT cells initially swelled faster than *TMEM206*^{-/-} cells, they subsequently recovered their volume and even shrank. Initial swelling may indeed be owed to the opening of both ASIC and ASOR, with ASIC-mediated Na⁺-influx mediating the depolarization required for passive Cl⁻ influx. In contrast to ASOR, however, ASIC channels inactivate (Gründer and Pusch, 2015), leading to a reversal of the Cl⁻ electrochemical potential, passive efflux of Cl⁻ through ASOR, and subsequent osmotic cell shrinkage. Although there is now little doubt that TMEM206/ASOR channels foster acid-induced cell death, the underlying signal transduction cascade likely is complex.

Recently, while the present work was being completed, Yang *et al.* reported on their independent identification and characterization of TMEM206 as integral component of the ASOR channel (which the authors renamed PAC for Proton-Activated Channel) (J. Yang *et al.*, 2019). They likewise reported protective effects of *TMEM206* disruption on acid-induced cell death of HEK cells or cultured primary cortical neurons. Intriguingly, these authors showed that *Tmem206*^{-/-} mice showed smaller stroke areas in a middle cerebral artery occlusion model (J. Yang *et al.*, 2019), although the previously reported decrease of pH_o in the stroke area (down to ~6.4) (Nedergaard *et al.*, 1991) is slightly above the value needed for ASOR activation. In a cysteine modification scan restricted to the extracellular half of TM2, they also found that reaction of I307C with MTSES reduces ASOR currents, and showed that the I307A mutant displayed moderately

decreased iodide permeability. These results agree with our conclusion that the entire TM2 and the extracellular end of TM1 line ASOR's pore in an oligomeric complex.

Conclusion

We have identified TMEM206 as essential subunit of the acid-sensitive outwardly rectifying anion channel ASOR. TMEM206 proteins constitute the pore of ASOR, probably in a homo-oligomeric complex. TMEM206, which lacks paralogs in any given species, defines a structurally novel class of ion channels. TMEM206/ASOR channels are involved in acid-induced cell death, but this role in pathology cannot explain its wide and possibly ubiquitous expression across tissues and vertebrate species. Its molecular identification in this work and in the parallel study of Yang *et al.* (*J. Yang et al., 2019*) is an important step to identify its physiological roles and to mechanistically understand the diverse ways by which anion-selective channels can be formed.

MATERIALS AND METHODS

Key Resources Table

Reagent type (species) or resource	Designation	Source or reference	Identifiers	Additional information
cell line (<i>Homo sapiens</i>)	HEK293 WT	Deutsche Sammlung von Mikroorganismen und Zellkulturen, Germany	ACC No. 305; RRID: CVCL_0045	
cell line (<i>Homo sapiens</i>)	HEK293 TMEM206 ^{-/-}	this paper		generated from WT HEK293, different clones (Table 1)
cell line (<i>Homo sapiens</i>)	HeLa WT	Deutsche Sammlung von Mikroorganismen und Zellkulturen, Germany	ACC No. 57; RRID: CVCL_0030	
cell line (<i>Homo sapiens</i>)	HeLa TREx	Thermo Fisher	Cat. No. R71407; RRID: CVCL_D587	
cell line (<i>Homo sapiens</i>)	HeLa-E ² GFP-2A-FaNaC	this paper	see below for FaNaC/E ² GFP	generated from HeLa TREx, clone E2F-5
cell line (<i>Homo sapiens</i>)	HeLa TMEM206 ^{-/-}	this paper		generated from HeLa-E ² GFP-2A-FaNaC, different clones (Table 1)
transfected construct (<i>S.pyogenes</i>)	pSpCas9(BB)-2A-GFP (PX458)	PMID: 24157548	RRID: Addgene_48138	
gene (<i>Homo sapiens</i>)	Human TMEM206	this paper	RefSeq: NM_018252.2; UniProtKB: Q9H813	Cloned from human brain cDNA library (Clontech)
gene (<i>Heterocephalus glaber</i>)	Naked mole-rat TMEM206	this paper	RefSeq: XM_004853543.3; UniProtKB: A0A0N8ETT8	human codon-optimized, synthesized by Life Technologies
gene (<i>Gallus gallus</i>)	Chicken TMEM206	this paper	RefSeq: XM_419431.6; UniProtKB: A0A1D5PSZ0	human codon-optimized, synthesized by Life Technologies
gene (<i>Anolis carolinensis</i>)	Green anole TMEM206	this paper	RefSeq: XM_003216011.3; UniProtKB: G1KFB8	human codon-optimized, synthesized by Life Technologies
gene (<i>Danio rerio</i>)	Zebrafish TMEM206	this paper	RefSeq: NM_001291762.1; UniProtKB: X1WG42	human codon-optimized, synthesized by Life Technologies
gene (<i>Saccoglossus kowalevskii</i>)	Acorn worm TMEM206-like	this paper	RefSeq: XM_006811230.1	human codon-optimized, synthesized by Life Technologies
gene (<i>Cornu aspersum</i>)	FaNaC	PMID: 7501021; PMID: 16034422	GenBank: X92113.1; UniProtKB: Q25011	
gene (<i>Aequorea victoria</i>)	E ² GFP (GFP S65T/T203Y)	PMID: 17434942, PMID: 20581829		subcloned from ClopHensor (Addgene #25938)
antibody	anti-GFP (chicken polyclonal)	Aves Lab	Cat. No. GFP-1020; RRID: AB_10000240	(1/1,000)
antibody	anti-HA (rabbit monoclonal)	Cell Signaling	Cat. No. 3724; ; RRID: AB_1549585	(1/1,000)

Continued on next page

Reagent type (species) or resource	Designation	Source or reference	Identifiers	Additional information
antibody	anti-GFP (rabbit polyclonal)	Thermo Fisher	Cat. No. A-11122; RRID: AB_221569	(1/1,000)
antibody	anti-Na/K-ATPase (mouse monoclonal)	Millipore	Cat. No. 05-369; RRID: AB_309699	(1/10,000)
antibody	anti-rabbit AlexaFluor 633 (goat polyclonal)	Invitrogen	Cat. No. A21071; RRID: AB_2535732	(1/2,000)
antibody	anti-chicken HRP (rabbit polyclonal)	Sigma	Cat. No. A-9792; RRID: AB_258473	(1/10,000)
antibody	anti-mouse HRP Affinipure (goat polyclonal)	Jackson ImmunoResearch	Cat. No. 115-035-003; RRID: AB_10015289	(1/10,000)
sequence-based reagent	Dharmacon ON-TARGETplus TM human siRNA library	Horizon Discovery	Cat. No. G-105005-E2-025	arrayed in 384-well plates
chemical compound, drug	FMRFamide (H-Phe-Met-Arg-Phe-NH ₂)	Bachem	Cat. No. 4001566	5 mM stock in ddH ₂ O, stored at -20 °C for up to 6 months
chemical compound, drug	MTSES (2-Sulfonatoethyl methanethiosulfonate)	Biotium	Cat. No. 91020	250 mM stock in ddH ₂ O, freshly prepared, kept on ice for up to 4 hours
chemical compound, drug	Pregnenolone sulfate (PS)	Sigma	Cat. No. P162	50 mM stock in DMSO (stored at -20 °C for up to 6 months) for electrophysiology experiments or freshly diluted in PBS for cell death analysis
chemical compound, drug	4,4'-Diisothiocyanatostilbene-2,2'-disulfonic acid (DIDS)	Sigma	Cat. No. D3514	100 mM stock in DMSO, stored at -20 °C for up to 6 months
chemical compound, drug	Niflumic acid (NFA)	Sigma	Cat. No. N0630	300 mM stock in DMSO, stored at -20 °C for up to 6 months
chemical compound, drug	Hoechst 33342	ImmunoChemistry Technologies	Cat. No. ICT-639	
chemical compound, drug	Propidium iodide	Thermo Fisher	Cat. No. P3566	
chemical compound, drug	Calcein AM	Thermo Fisher	Cat. No. 65-0853-39	10 mM stock in DMSO, stored at -20 °C for up to 6 months

HeLa-E²GFP-2A-FaNaC Cell Line used in the siRNA Screen

The T-REx™ system (Life Technologies) was used to generate a stable HeLa cell line inducibly co-expressing the halide-sensitive E²GFP variant (GFP S65T/T203Y) (Arosio *et al.*, 2007) and the FMRFamide-gated cation channel FaNaC (Lingueglia *et al.*, 1995) (UniProtKB Q25011). A pcDNA5/FRT/TO-based plasmid containing the cDNAs encoding E²GFP and FaNaC, separated by a self-cleaving 2A peptide was generated for this purpose. Resulting clones were selected using 200 µg/ml hygromycin B (Santa Cruz) and 4 µg/ml blasticidin (InvivoGen). Monoclonal cell lines were tested for robust expression of E²GFP and FaNaC by fluorescence microscopy and patch clamp electrophysiology, respectively. Clone E2F-5 was chosen for the genome-wide screen. Cells were kept in DMEM supplemented with 10% tetracycline-free Hyclone™ FCS (Fisher Scientific) and the above-mentioned antibiotics.

Genome-wide siRNA Screen

The genome-wide siRNA screen was performed at the FMP Screening Unit using the Dharmacon ON-TARGETplus™ human siRNA library (Horizon Discovery) arrayed in 66 384-well plates, targeting 18090 genes by four pooled siRNAs each. The screen was performed three times.

For siRNA transfection, on a Freedom EVO 200 workstation (Tecan) 4 µl of a 500 nM library-siRNA-OptiMEM solution was mixed in each well of the 384-well assay-plate with 0.125 µl Lipofectamine RNAiMAX transfection reagent (Life Technologies) previously diluted in 5.875 µl OptiMEM (Life Technologies). Subsequently, 3,000 cells/well in phenol red-free DMEM (PAN Biotech) were seeded onto the pre-dispensed transfection mixture using an EL406™ dispenser (BioTek) resulting in a final concentration of 50 nM siRNA SMARTpool in a total volume of 40 µl per well. To induce E²GFP-2A-FaNaC expression after 24 h, 10 µl phenol red-free DMEM containing 5 µg/ml doxycycline were added resulting in a final concentration of 1 µg/ml doxycycline.

The quenching assay was performed 72 h post-transfection. First, using an EL406 washer dispenser (BioTek), cells were washed three times with 120 µl/well of a bath solution containing (in mM): 145 NaCl, 5 KCl, 1 MgCl₂, 2 CaCl₂, 10 glucose, 10 HEPES,

pH 7.4 with NaOH, 320 mOsm/kg. Subsequently, wells were aspirated to 10 μ l residual volume. The plates were transferred into the FLIPR Tetra[®] High Throughput Cellular Screening System (Molecular Devices) for measurements. All wells of the plate were simultaneously illuminated at $\lambda = 470\text{-}549$ nm with an exposure time of 0.53 s and E²GFP-fluorescence was measured at $\lambda = 515\text{-}575$ nm. Measurements were taken in intervals of 1 s for 300 s. After recording the baseline fluorescence for 10 s, parallel pipetting added 25 μ l acidic iodide-containing solution with the following composition (in mM): 145 NaCl, 5 KCl, 1 MgCl₂, 2 CaCl₂, 10 glucose, 5 Na₃citrate and 30 μ M FMRamide (H-Phe-Met-Arg-Phe-NH₂ acetate salt, Bachem), pH 4.83, 320 mOsm/kg. The mixture of this solution with remaining bath solution resulted in approximately 100 mM iodide, 20 μ M FMRamide and pH 5. Control wells received the same solution without FMRamide.

Analysis and processing of data obtained in the genome-wide screen were performed with the KNIME Analytics Platform (KNIME). The maximal slope of fluorescence change was determined by linear regression of 10 points in a sliding window between 20 s and 100 s. Slope was normalized to the averaged baseline and background fluorescence.

For plate-wise normalization a Z-score was calculated from the normalized slope value as follows:

$$Z = \frac{x_i - \tilde{x}}{MAD_x}$$

where x_i is the normalized slope from well i , \tilde{x} is the median and MAD_x the median absolute deviation of all candidate wells in the plate.

The median of the three replicate Z-scores per target gene was used to rank the data. As a measure of cell viability, an additional Z-score was calculated from the baseline fluorescence. We filtered out all candidates in which the median Baseline START Z-score was lower than -0.5, indicating a significantly reduced cell number.

Electrophysiology

Cells were plated onto poly-L-lysine-coated coverslips and transfected using the Xfect (Clontech) transfection reagent. Whole-cell patch-clamp recordings were performed 1 day after transfection using an EPC-10 USB patch-clamp amplifier and PatchMaster software (HEKA Elektronik). All experiments were performed at 20–22°C. Patch pipettes had a resistance of 1–3 MΩ in NaCl/CsCl-based solutions. The holding potential was -30 mV. Cells with a series resistance above 8 MΩ were discarded, and series resistance was not compensated for. Currents were sampled at 1 kHz and low-pass filtered at 10 kHz. In some cases, a notch filter was applied to current traces post-recording to minimize line noise.

The standard pipette solution contained (in mM): 150 CsCl, 10 EGTA, 10 HEPES, 5 MgCl₂, pH 7.2 with CsOH (320 mOsm/kg). The standard pH 7.4 bath solution in which cells were kept before activation of acid-induced currents contained (in mM): 145 NaCl, 5 KCl, 1 MgCl₂, 2 CaCl₂, 10 glucose, 10 HEPES, pH 7.4 with NaOH (320 mOsm/kg). Solutions with a pH between 4.0 and 5.25 were identical in composition, but buffered with 5 mM Na₃citrate instead of HEPES. pH of these solutions was adjusted using citrate. Likewise, solutions with a pH between 5.5 and 6.0 were buffered with 10 mM MES and adjusted with NaOH. To determine anion selectivities (Figure 4A), NaCl in the pH 4.8 bath solution was replaced by equimolar amounts of NaBr, NaI, NaNO₃ and NaSCN. The control bath solution for the ion selectivity experiments shown in Figure 5 E-I and Figure 7 contained (in mM) 150 NaCl, 2 Ca(OH)₂, 1 EGTA, 5 citric acid, pH 5.25 with NMDG-OH (320 mOsm/kg). To determine relative permeabilities, NaCl was replaced by an equimolar amount of NaI, or with 100 mM Na₂SO₄. In these experiments the pipette solution contained (in mM): 140 NMDG-Cl, 10 EGTA, 10 HEPES, 5 MgCl₂, pH 7.2 with NMDG-OH (320 mOsm/kg). Osmolarities of all solutions were assessed with an Osmomat 030 freezing point osmometer (Gonotec) and adjusted using mannitol.

MTSES was purchased from Biotium and stored at -20°C as powder. MTSES stock solutions (250 mM in water) were freshly prepared on each day and kept on ice until final dilution in recording solutions right before experiments.

The standard protocol for measuring the time course of acid activated currents, applied every 4 s after membrane rupture, consisted of a 100-ms step to -80 mV followed by a 500-ms ramp from -80 to +80 mV. The read-out for current amplitudes was the current at -80 mV and +80 mV normalized to cell capacitance (current density, I/C). The voltage protocol, applied after complete activation of ASOR, consisted of 1-s steps starting from -80 mV to +80 mV in 20-mV intervals preceded and followed by a 0.5-s step to -80 mV every 4 s.

An agar bridge was used in all electrophysiological experiments. Solution was exchanged in the entire bath chamber using a custom gravity-fed perfusion system under TTL control, achieving full exchange in <5 s. Liquid junction potentials (LJPs) were only considered in ion selectivity experiments (*Figures 5 and 7*). LJPs were measured experimentally for all solutions used in these experiments with reference to NMDG-Cl pipette solution according to (*Neher, 1992*) and corrected for after data acquisition. The measured values (mean \pm SD) were: 4.5 ± 0.3 mV (NaCl, n=4), 4.3 ± 0.3 mV (NaI, n=4), and 9.5 ± 0.1 mV (Na₂SO₄, n=4).

Molecular Biology

Human TMEM206 was cloned from cDNA obtained from a human brain cDNA library (Clontech) using the following primers:

Forward: AGAAGCTTCCACCATGATCCGGCAGGAGCGCTCCAC

Reverse: GAGGATCCTCAGCTTATGTGGCTCGTTGCCTG

HindIII and BamHI restriction sites on the primers were used to clone the PCR product into pcDNA3.1(+) (Invitrogen). Sequencing of the entire ORF confirmed the sequence was identical to NCBI RefSeq NM_018252.2. Subsequently, the cDNA was subcloned into other vectors such as pEGFP-N1/C1 using PCR-based strategies. Point mutations were introduced using the QuikChange Kit (Agilent). All clones were verified by sequencing the entire ORF. TMEM206 ortholog cDNA clones (human codon-optimized) were synthesized by Life Technologies. The cDNAs were subcloned into pEGFP-C1 for fusion of an N-terminal GFP tag.

Cell culture

HEK293 and HeLa cells were maintained in DMEM (PAN Biotech) supplemented with 10% FBS (PAN Biotech) and 1% penicillin/streptomycin at 37°C and 5% CO₂. Cells were regularly tested for mycoplasma contamination.

Generation of Monoclonal Knockout Cell Lines

Cell lines with disruptions in the TMEM206 gene were generated using CRISPR-Cas9 as described previously (Voss *et al.*, 2014). Briefly, target sgRNAs were cloned into the pSpCas9(BB)-2A-GFP (PX458, gift from Feng Zhang, MIT) vector and transfected into HEK293 and HeLa cells. 2-5 days post-transfection single GFP-positive cells were FACS-sorted into 96-well plates containing pre-conditioned DMEM medium. Monoclonal cell lines were raised and tested for sequence alterations using target-site-specific PCR on genomic DNA followed by Sanger-sequencing. sgRNA sequences, genetic modifications and resulting protein mutations are listed for each clone in Table 1.

Table 1. TMEM206 Knockout Cell Lines.

Cell Line	Clone	sgRNA Sequence	Genetic Modification	Protein Modification	Figures
HEK293 <i>TMEM206</i> ^{-/-}	1D4	CAGCTGTAAGCA CCATTACG	a1: duplication of a395 a2: Δa395	1: Y132stop between TMD1 and TMD2 2: Y132S-fs between TMD1 and TMD2	3E
	2E5	GGACCGAGAAGA CGTTCTTC	Homozygous Δ2nt (g189-a190)	N64R-fs before TMD1	3C-H; 4; 5; 6; 6-S1; 7; 7-S1; 8;
	3D9	AAGGAGACGGTC AGAGTCCA	Homozygous duplication of t110	Q38P-fs before TMD1	3E; 8A-B
HeLa <i>TMEM206</i> ^{-/-}	1G1	CAGCTGTAAGCA CCATTACG	duplication of a395	Y132stop between TMD1 and TMD2	3-S1
	2C6	GGACCGAGAAGA CGTTCTTC	a1: Δ11nt (g178- a188) a2: duplication of g189	1: A60E-fs 2: N64E-fs before TMD1	3-S1
	3F8	AAGGAGACGGTC AGAGTCCA	duplication of t110	Q38P-fs before TMD1	2A,C,D; 8C,D; 3-S1

a = allele; fs = frameshift; nt = nucleotide; TMD = transmembrane domain; Δ deletion

Immunocytochemistry

To determine the transmembrane topology of TMEM206, *TMEM206*^{-/-} HeLa cells (clone 3F8) were transfected with plasmids encoding GFP-TMEM206, TMEM206-GFP or TMEM206 containing a HA tag (YPYDVPDYA) after residue 271 using Lipofectamine 2000. 24 h after transfection, cells were fixed with 2% PFA for 10 min and permeabilized with 0.1% Triton X-100 as indicated. Cells were incubated with chicken anti-GFP (1/1000, Aves Lab) or rabbit anti-HA (1/1000, Cell Signaling) for 2 h and subsequently with secondary antibodies coupled to AlexaFluor633 for 1 h. For the non-permeabilized conditions, no Triton X-100 was added to the antibody solutions.

Images were acquired with a confocal microscope with a 63x NA1.4 oil-immersion lens (LSM880, Zeiss).

Deglycosylation and Western Blot

To determine glycosylation of TMEM206, *TMEM206*^{-/-} HEK cells (clone 2E5) were transfected with plasmids coding for GFP-TMEM206 or mutants of putative glycosylation sites (GFP-TMEM206 N148A, N155A, N162A, N190A) using polyethylenimine (PEI). One day after transfection, cells were scrapped in homogenization buffer containing (in mM): 140 NaCl, 20 Tris HCl pH 7.4, 2 EDTA, 4 Pefabloc (Roth) and Complete[®] proteinase inhibitor cocktail (Roche). Cell debris were removed by centrifugation at 1000 g for 10 min and the supernatant was ultracentrifuged at 269,000 g for 30 min. Pellets containing the membrane fractions were resuspended in lysis buffer containing (in mM): 140 NaCl, 50 Tris HCl pH 6.8, 0.05 EDTA, 1% SDS, 1% Triton X-100, 2 EDTA, 4 Pefabloc (Roth) and Complete[®] proteinase inhibitor cocktail (Roche). Protein concentration of the membrane fractions was determined by BCA.

40 µg of membrane protein were denaturated by adding 2 µl of denaturation buffer (New England Biolabs), for a final volume of 20 µl, and heating the reaction at 55°C for 15 min. 4 µl of 10xG7 Buffer (NEB), 4 µl of 10% NP-40 (NEB) and 8 µl of PNGase F (NEB) were added, for a total volume of 40 µl. After 2 h incubation at 37°C, the deglycosylation reaction was terminated by adding 10 µl of Lämmli sample buffer. Samples were separated by SDS-PAGE and analyzed by Western blot using rabbit anti-

GFP antibody (1/1000, Thermo Fisher). Na/K-ATPase was used as loading control and detected using a mouse antibody (1/10,000, Millipore)

Acid-Induced Cell Death Assay

Acid-induced cell death of WT and *TMEM206*^{-/-} HEK293 cells (clones 2E5 and 3D9) was assessed by double staining with Hoechst 33342 and propidium iodide (PI). WT and KO cells were incubated for 2 h at 37°C with solution at pH 7.4 (HEPES) or 4.5 (citrate, see Electrophysiology). Experimental solutions were subsequently replaced with pH 7.4 solution containing Hoechst 33342 (1 µg/ml, ImmunoChemistry Technologies) and PI (5 µg/ml, Thermo Fischer) and cells were incubated for 15 min at 37°C. After washing, cells were fixed and analyzed using a confocal microscope (LSM880, Zeiss). For quantification, several 10x microscopic fields were randomly chosen. Percentage of PI positive cells over the total number of cells, identified with Hoechst 33342, was determined using Fiji.

Cell Volume Measurements

Cell volume was measured semi-quantitatively using the calcein fluorescence method (Capó-Aponte *et al.*, 2005). HEK293 cells were plated 2 days before measurements in a 96-well-plate at a density of 45,000 cells per well, HeLa cells were plated 1 day before measurements at a density of 35,000 cells per well. Cells were loaded with 10 µM calcein-AM (eBioscience) in DMEM for 1 h at 37°C. Subsequently, cells were washed 3 times with 100 µl of a pH 7.4 (HEPES, see Electrophysiology) bath solution. After washing, each well contained 50 µl bath solution. Following a 5-min incubation period the plate was transferred into Safire² Multimode Microplate Reader (Tecan) and fluorescence measurements at $\lambda = 495$ nm were initiated. After baseline recording for 30 s, 125 µl of a pH 4.0 (citrate, see Electrophysiology) solution, or pH 7.4 bath solution were added to the wells resulting in a final pH of 4.2 or 7.4 respectively. Calcein fluorescence was measured every 10 s for 10 min. Wells containing cells of the respective cell line not loaded with calcein-AM (but otherwise treated equally) were used for background subtraction, and fluorescence values were normalized to $t = 0$ s (after the pipetting procedure).

ACKNOWLEDGEMENTS

We thank Sabrina Kleissle for excellent help with the genome-wide siRNA screen, Marc Wippich for help with data analysis, and Judith von Sivers for technical assistance. This work was supported by the European Research Council (ERC) Advanced Grant VOLSIGNAL (#740537) to TJJ.

CONFLICT OF INTEREST

The authors declare no conflict of interest.

FIGURE SUPPLEMENTS

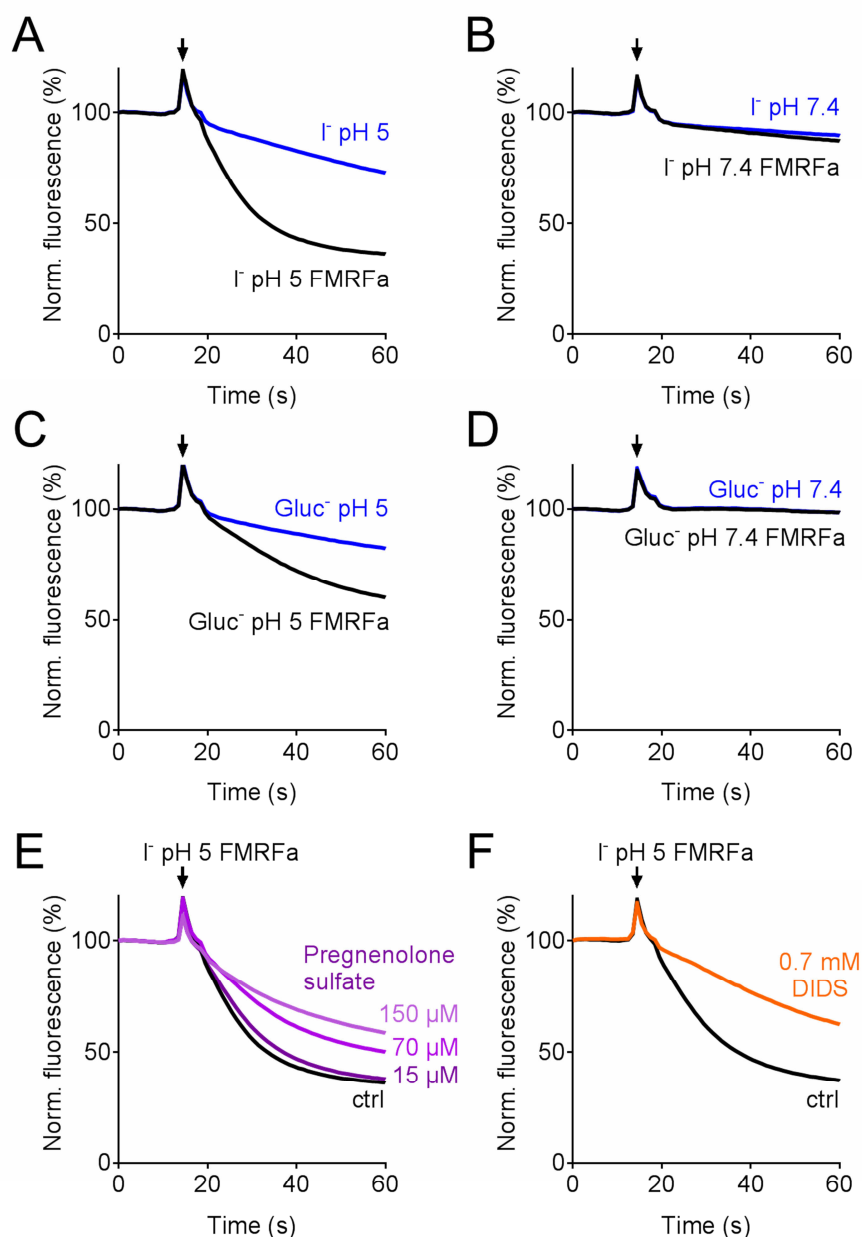


Figure 1—figure supplement 1. Verification of the assay for the genome-wide siRNA screen.

(A-D) Controls in which E²GFP-2A-FaNaC-expressing cells were subjected to solutions containing I^- (A, B) or gluconate (C, D) at pH 5 (A, C) or pH 7.4 (B, D). Only depolarization induced by activation of FaNaC by FMRFamide in the presence of I^- and acidic pH (A) produced rapid quenching of E²GFP fluorescence. (E-F) ASOR inhibitors pregnenolone sulfate (PS, E) and DIDS (F) inhibited fluorescence quenching. PS was added acutely together with the acidic solution. Cells were preincubated with DIDS, which induced a large increase in the absolute signal due to its intrinsic fluorescence.

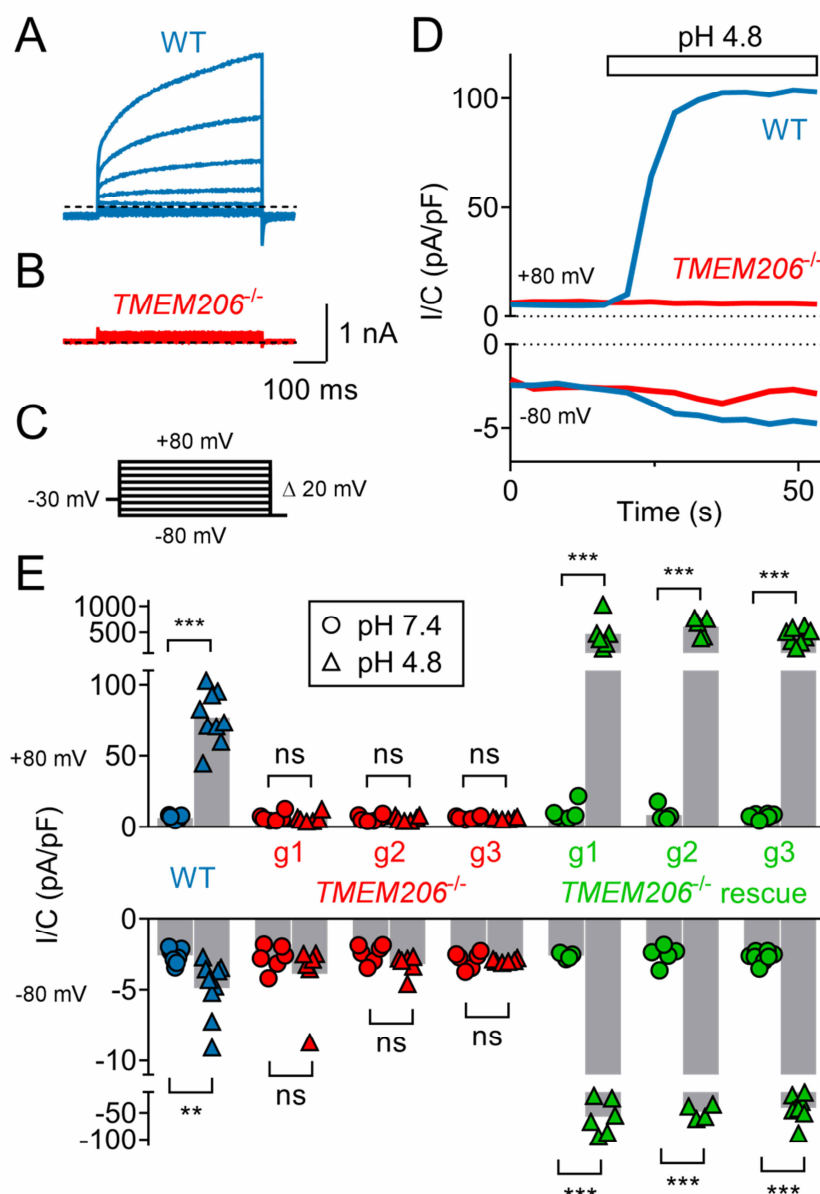


Figure 3—figure supplement 1. TMEM206 mediates $I_{Cl,H}$ ASOR currents in HeLa cells. (A–C) Voltage-clamp traces of wild type (WT, A) and $TMEM206^{-/-}$ HeLa cells (B) at $pH_o = 4.8$, using the protocol shown in (C). (D) Outward and (smaller) inward $I_{Cl,H}$ currents rapidly activate in WT, but not $TMEM206^{-/-}$ HeLa cells when pH_o is lowered from 7.4 to 4.8. (E) Current densities (at pH_o 7.4 and pH_o 4.8) at +80 and -80 mV for non-transfected WT HeLa cell, 3 independent $TMEM206^{-/-}$ clones, and TMEM206-transfected $TMEM206^{-/-}$ HeLa cells (rescue). Rescue current densities exceeded those in WT cells by ~10-fold (g1–g3: guide RNAs used for CRISPR-Cas9-mediated gene disruption, see Table 1). Bars, mean; **, $p < 0.05$; ***, $p < 0.001$; one-way ANOVA with Bonferroni correction.

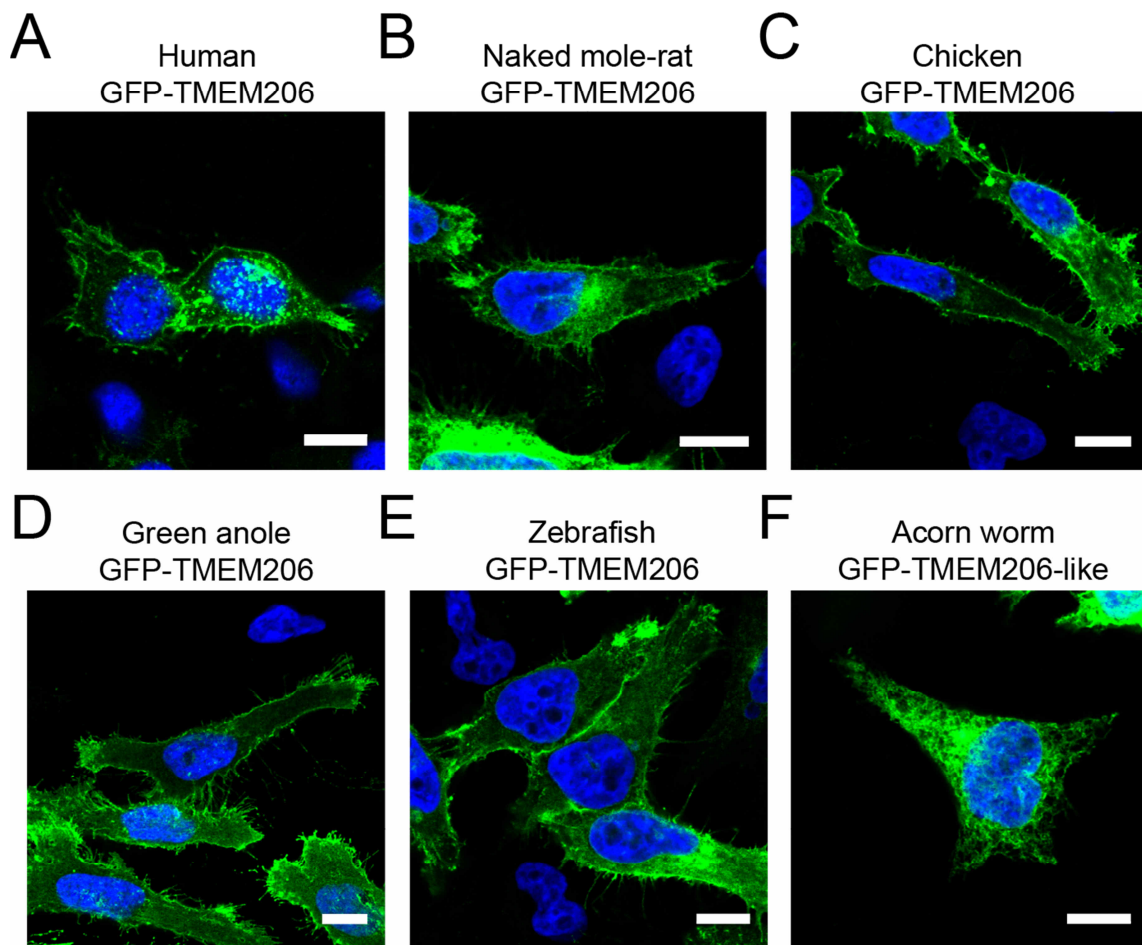


Figure 5—figure supplement 1. Subcellular localization of different GFP-tagged TMEM206 orthologs after transfection into HeLa *TMEM206*^{-/-} cells. All proteins were fused with GFP at the N-terminus to allow their detection by fluorescence. Scale bars: 10 μm.

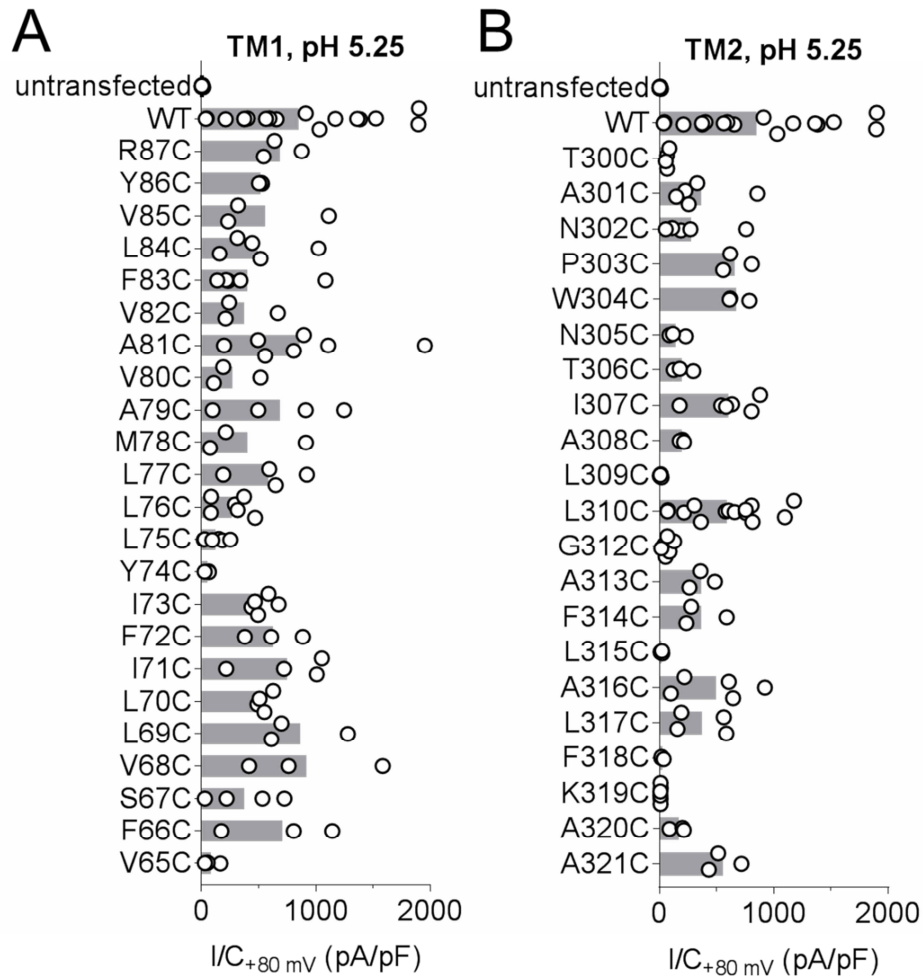


Figure 6—figure supplement 1. Acid-induced current densities of cysteine mutants. (A, B) Maximal current densities (I/C) at +80 mV and pH 5.25 for all cysteine mutants in transmembrane domains 1 (TM1) and 2 (TM2) are shown. Bars, mean.

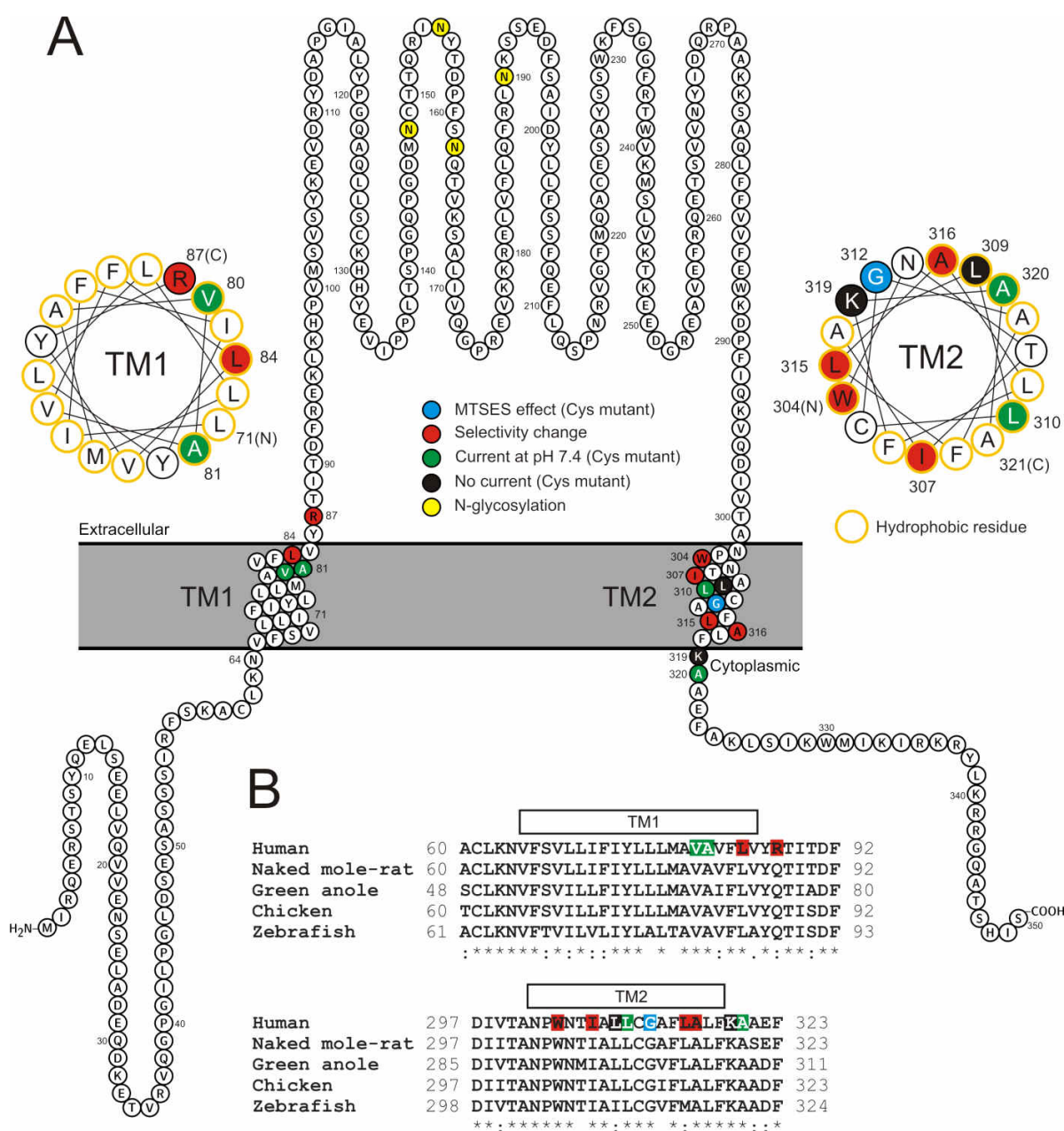


Figure 6—figure supplement 2. Localization of studied TMEM206 residues. (A) Visualization of the human TMEM206 protein (using software provided by <http://wlab.ethz.ch/protter>) and helical wheel diagrams of TM1 and TM2. Selected residues are color-coded as explained. In helical wheels, (N) and (C) label the N- and C-terminal end of the displayed polypeptide segments. (B) Alignment of protein sequences encoding TM1 and TM2 from the TMEM206 orthologs studied in this work. Residues color-coded as in (A). With the exception of R87, all residues found to have interesting functional effects on TMEM206/ASOR currents are conserved.

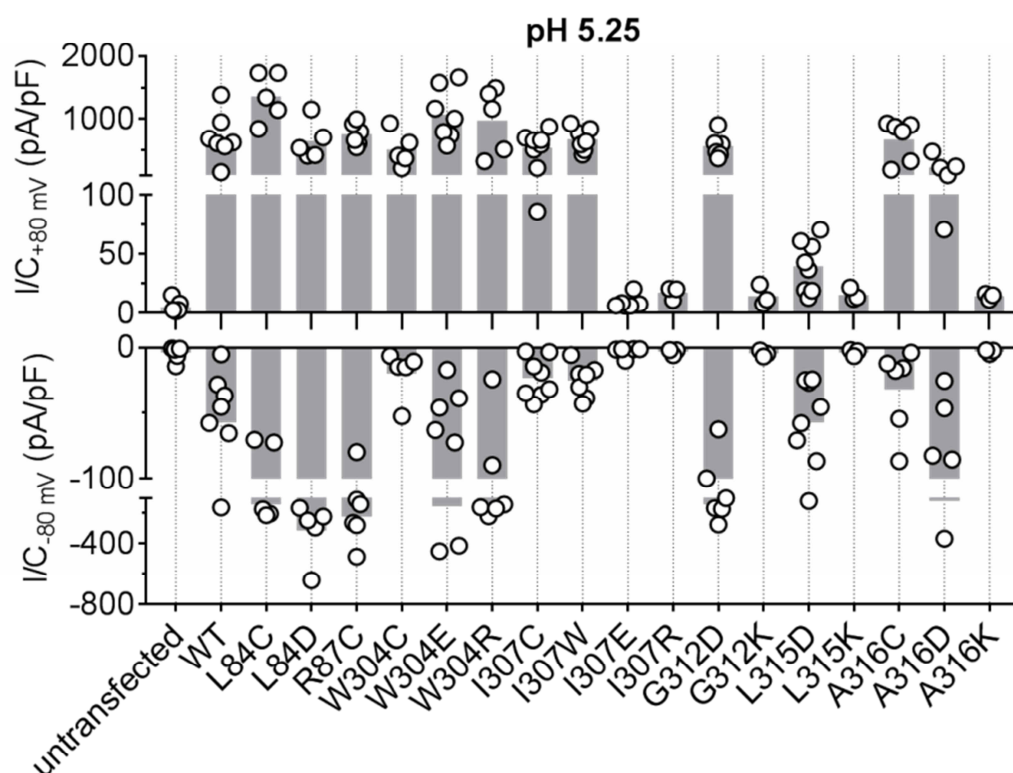


Figure 7—figure supplement 1. Acid-induced current densities of TMEM206 mutants. Maximal current densities (I/C) at +80 mV and -80 mV and pH 5.25 for the indicated mutants. Note segmented y axis. Bars, mean.

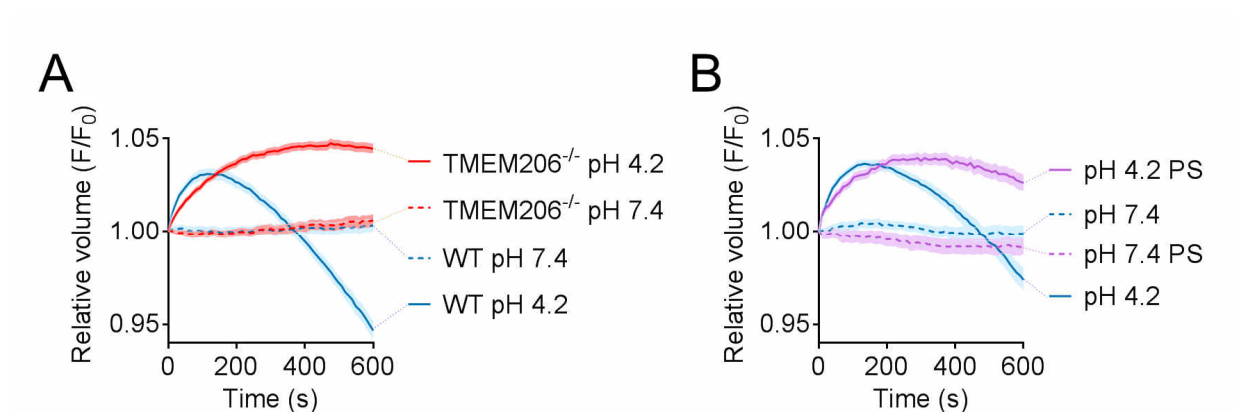


Figure 8—figure supplement 1. Role of TMEM206/ASOR ablation or block on acid-induced cell volume changes in HeLa cells. Influence of TMEM206 ablation (**A**) or block by 100 μ M pregnenolone sulfate (PS) (**B**) on acid-induced cell volume changes of HeLa cells as monitored by calcein fluorescence. Mean of eight measurements; error range, SEM.

REFERENCES

- Arosio D, Garau G, Ricci F, Marchetti L, Bizzarri R, Nifosi R, Beltram F. 2007. Spectroscopic and structural study of proton and halide ion cooperative binding to gfp. *Biophys J* **93**: 232-244. DOI: 10.1529/biophysj.106.102319
- Auzanneau C, Thoreau V, Kitzis A, Becq F. 2003. A Novel voltage-dependent chloride current activated by extracellular acidic pH in cultured rat Sertoli cells. *J Biol Chem* **278**: 19230-19236. DOI: 10.1074/jbc.M301096200
- Baconguis I, Bohlen CJ, Goehring A, Julius D, Gouaux E. 2014. X-ray structure of acid-sensing ion channel 1-snake toxin complex reveals open state of a Na⁺-selective channel. *Cell* **156**: 717-729. DOI: 10.1016/j.cell.2014.01.011
- Bengele HH, Graber ML, Alexander EA. 1983. Effect of respiratory acidosis on acidification by the medullary collecting duct. *Am J Physiol* **244**: F89-94. DOI: 10.1152/ajprenal.1983.244.1.F89
- Browe BM, Vice EN, Park TJ. 2018. Naked Mole-Rats: Blind, Naked, and Feeling No Pain. *Anat Rec (Hoboken)*. DOI: 10.1002/ar.23996
- Capó-Aponte JE, Iserovich P, Reinach PS. 2005. Characterization of regulatory volume behavior by fluorescence quenching in human corneal epithelial cells. *J Membr Biol* **207**: 11-22. DOI: 10.1007/s00232-005-0800-5
- Capurro V, Gianotti A, Caci E, Ravazzolo R, Galletta LJ, Zegarra-Moran O. 2015. Functional analysis of acid-activated Cl⁻ channels: properties and mechanisms of regulation. *Biochim Biophys Acta* **1848**: 105-114. DOI: 10.1016/j.bbamem.2014.10.008
- Caputo A, Caci E, Ferrera L, Pedemonte N, Barsanti C, Sondo E, Pfeffer U, Ravazzolo R, Zegarra-Moran O, Galletta LJ. 2008. TMEM16A, a membrane protein associated with calcium-dependent chloride channel activity. *Science* **322**: 590-594.
- Chu XP, Xiong ZG. 2012. Physiological and pathological functions of acid-sensing ion channels in the central nervous system. *Curr Drug Targets* **13**: 263-271.
- Drews A, Mohr F, Rizun O, Wagner TF, Dembla S, Rudolph S, Lambert S, Konrad M, Philipp SE, Behrendt M, Marchais-Oberwinkler S, Covey DF, Oberwinkler J. 2014. Structural requirements of steroidal agonists of transient receptor potential melastatin 3 (TRPM3) cation channels. *Br J Pharmacol* **171**: 1019-1032. DOI: 10.1111/bph.12521
- Edrey YH, Park TJ, Kang H, Biney A, Buffenstein R. 2011. Endocrine function and neurobiology of the longest-living rodent, the naked mole-rat. *Exp Gerontol* **46**: 116-123. DOI: 10.1016/j.exger.2010.09.005
- Eigenbrod O, Debus KY, Reznick J, Bennett NC, Sanchez-Carranza O, Omerbasic D, Hart DW, Barker AJ, Zhong W, Lutermann H, Katandukila JV, Mgone G, Park TJ, Lewin GR. 2019. Rapid molecular evolution of pain insensitivity in multiple African rodents. *Science* **364**: 852-859. DOI: 10.1126/science.aau0236
- Friese MA, Craner MJ, Etzensperger R, Vergo S, Wemmie JA, Welsh MJ, Vincent A, Fugger L. 2007. Acid-sensing ion channel-1 contributes to axonal degeneration in autoimmune inflammation of the central nervous system. *Nat Med* **13**: 1483-1489. DOI: 10.1038/nm1668

- Fu ZJ, Li XZ, Wang QR, Shi L, Zhang LQ, Pan XL. 2013. Extracellular acidic pH-activated, outward rectifying chloride currents can be regulated by reactive oxygen species in human THP-1 monocytes. *Biochem Biophys Res Commun* **432**: 701-706. DOI: 10.1016/j.bbrc.2013.01.090
- Funk K, Woitecki A, Franjic-Würtz C, Gensch T, Möhrle F, Frings S. 2008. Modulation of chloride homeostasis by inflammatory mediators in dorsal root ganglion neurons. *Mol Pain* **4**: 32. DOI: 10.1186/1744-8069-4-32
- Gillies RJ, Brown JS, Anderson ARA, Gatenby RA. 2018. Eco-evolutionary causes and consequences of temporal changes in intratumoural blood flow. *Nat Rev Cancer* **18**: 576-585. DOI: 10.1038/s41568-018-0030-7
- Graves AR, Curran PK, Smith CL, Mindell JA. 2008. The Cl⁻/H⁺ antiporter CIC-7 is the primary chloride permeation pathway in lysosomes. *Nature* **453**: 788-792.
- Gründer S, Pusch M. 2015. Biophysical properties of acid-sensing ion channels (ASICs). *Neuropharmacology* **94**: 9-18. DOI: 10.1016/j.neuropharm.2014.12.016
- Gunther W, Lüchow A, Cluzeaud F, Vandewalle A, Jentsch TJ. 1998. CIC-5, the chloride channel mutated in Dent's disease, colocalizes with the proton pump in endocytotically active kidney cells. *Proc Natl Acad Sci U S A* **95**: 8075-8080. DOI: 10.1073/pnas.95.14.8075
- Hartzell HC, Qu Z, Yu K, Xiao Q, Chien LT. 2008. Molecular physiology of bestrophins: multifunctional membrane proteins linked to best disease and other retinopathies. *Physiol Rev* **88**: 639-672. DOI: 10.1152/physrev.00022.2007
- Holmgren M, Liu Y, Xu Y, Yellen G. 1996. On the use of thiol-modifying agents to determine channel topology. *Neuropharmacology* **35**: 797-804.
- Huang Y, Jiang N, Li J, Ji YH, Xiong ZG, Zha XM. 2015. Two aspects of ASIC function: Synaptic plasticity and neuronal injury. *Neuropharmacology* **94**: 42-48. DOI: 10.1016/j.neuropharm.2014.12.010
- Husson Z, Smith ESJ. 2018. Naked mole-rat cortical neurons are resistant to acid-induced cell death. *Mol Brain* **11**: 26. DOI: 10.1186/s13041-018-0369-4
- Jasti J, Furukawa H, Gonzales EB, Gouaux E. 2007. Structure of acid-sensing ion channel 1 at 1.9 Å resolution and low pH. *Nature* **449**: 316-323. DOI: 10.1038/nature06163
- Jentsch TJ. 2007. Chloride and the endosomal-lysosomal pathway: emerging roles of CLC chloride transporters. *J Physiol* **578**: 633-640. DOI: 10.1113/jphysiol.2006.124719
- Jentsch TJ, Pusch M. 2018. CLC Chloride Channels and Transporters: Structure, Function, Physiology, and Disease. *Physiol Rev* **98**: 1493-1590. DOI: 10.1152/physrev.00047.2017
- Jentsch TJ, Stein V, Weinreich F, Zdebik AA. 2002. Molecular structure and physiological function of chloride channels. *Physiol Rev* **82**: 503-568. DOI: 10.1152/physrev.00029.2001
- Jentsch TJ, Steinmeyer K, Schwarz G. 1990. Primary structure of *Torpedo marmorata* chloride channel isolated by expression cloning in *Xenopus* oocytes. *Nature* **348**: 510-514. DOI: 10.1038/348510a0
- Kato Y, Ozawa S, Miyamoto C, Maehata Y, Suzuki A, Maeda T, Baba Y. 2013. Acidic extracellular microenvironment and cancer. *Cancer Cell Int* **13**: 89. DOI: 10.1186/1475-2867-13-89

- Kornak U, Kasper D, Bösl MR, Kaiser E, Schweizer M, Schulz A, Friedrich W, Delling G, Jentsch TJ. 2001. Loss of the ClC-7 chloride channel leads to osteopetrosis in mice and man. *Cell* **104**: 205-215. DOI: 10.1016/s0092-8674(01)00206-9
- Lambert S, Oberwinkler J. 2005. Characterization of a proton-activated, outwardly rectifying anion channel. *The Journal of physiology* **567**: 191-213. DOI: 10.1113/jphysiol.2005.089888
- Li T, Yang Y, Canessa CM. 2011. Outlines of the pore in open and closed conformations describe the gating mechanism of ASIC1. *Nat Commun* **2**: 399. DOI: 10.1038/ncomms1409
- Lingueglia E, Champigny G, Lazdunski M, Barbry P. 1995. Cloning of the amiloride-sensitive FMRamide peptide-gated sodium channel. *Nature* **378**: 730-733. DOI: 10.1038/378730a0
- Ma ZY, Zhang W, Chen L, Wang R, Kan XH, Sun GZ, Liu CX, Li L, Zhang Y. 2008. A proton-activated, outwardly rectifying chloride channel in human umbilical vein endothelial cells. *Biochem Biophys Res Commun* **371**: 437-440. DOI: 10.1016/j.bbrc.2008.04.090
- Nedergaard M, Kraig RP, Tanabe J, Pulsinelli WA. 1991. Dynamics of interstitial and intracellular pH in evolving brain infarct. *Am J Physiol* **260**: R581-588. DOI: 10.1152/ajpregu.1991.260.3.R581
- Neher E. 1992. Correction for liquid junction potentials in patch clamp experiments. *Methods Enzymol* **207**: 123-131.
- Nobles M, Higgins CF, Sardini A. 2004. Extracellular acidification elicits a chloride current that shares characteristics with $I_{Cl(swell)}$. *Am J Physiol Cell Physiol* **287**: C1426-1435. DOI: 10.1152/ajpcell.00549.2002
- Park TJ, Lu Y, Jüttner R, Smith ES, Hu J, Brand A, Wetzel C, Milenkovic N, Erdmann B, Heppenstall PA, Laurito CE, Wilson SP, Lewin GR. 2008. Selective inflammatory pain insensitivity in the African naked mole-rat (*Heterocephalus glaber*). *PLoS Biol* **6**: e13. DOI: 10.1371/journal.pbio.0060013
- Piwon N, Günther W, Schwake M, Bösl MR, Jentsch TJ. 2000. ClC-5 Cl⁻-channel disruption impairs endocytosis in a mouse model for Dent's disease. *Nature* **408**: 369-373. DOI: 10.1038/35042597
- Qiu Z, Dubin AE, Mathur J, Tu B, Reddy K, Miraglia LJ, Reinhardt J, Orth AP, Patapoutian A. 2014. SWELL1, a Plasma Membrane Protein, Is an Essential Component of Volume-Regulated Anion Channel. *Cell* **157**: 447-458. DOI: 10.1016/j.cell.2014.03.024
- Sato-Numata K, Numata T, Inoue R, Okada Y. 2016. Distinct pharmacological and molecular properties of the acid-sensitive outwardly rectifying (ASOR) anion channel from those of the volume-sensitive outwardly rectifying (VSOR) anion channel. *Pflügers Arch* **468**: 795-803. DOI: 10.1007/s00424-015-1786-1
- Sato-Numata K, Numata T, Okada T, Okada Y. 2013. Acid-sensitive outwardly rectifying (ASOR) anion channels in human epithelial cells are highly sensitive to temperature and independent of ClC-3. *Pflügers Arch* **465**: 1535-1543. DOI: 10.1007/s00424-013-1296-y
- Sato-Numata K, Numata T, Okada Y. 2014. Temperature sensitivity of acid-sensitive outwardly rectifying (ASOR) anion channels in cortical neurons is involved in hypothermic neuroprotection against acidotoxic necrosis. *Channels (Austin)* **8**: 278-283.

- Scheel O, Zdebik AA, Lourdel S, Jentsch TJ. 2005. Voltage-dependent electrogenic chloride/proton exchange by endosomal CLC proteins. *Nature* **436**: 424-427. DOI: 10.1038/nature03860
- Schroeder BC, Cheng T, Jan YN, Jan LY. 2008. Expression cloning of TMEM16A as a calcium-activated chloride channel subunit. *Cell* **134**: 1019-1029.
- Silver IA, Murrills RJ, Etherington DJ. 1988. Microelectrode studies on the acid microenvironment beneath adherent macrophages and osteoclasts. *Exp Cell Res* **175**: 266-276.
- Smith ES, Omerbašić D, Lechner SG, Anirudhan G, Lapatsina L, Lewin GR. 2011. The molecular basis of acid insensitivity in the African naked mole-rat. *Science* **334**: 1557-1560. DOI: 10.1126/science.1213760
- Sun H, Tsunenari T, Yau KW, Nathans J. 2002. The vitelliform macular dystrophy protein defines a new family of chloride channels. *Proc Natl Acad Sci U S A* **99**: 4008-4013.
- Thews O, Riemann A. 2019. Tumor pH and metastasis: a malignant process beyond hypoxia. *Cancer Metastasis Rev*. DOI: 10.1007/s10555-018-09777-y
- Valinsky WC, Touyz RM, Shrier A. 2017. Characterization of constitutive and acid-induced outwardly rectifying chloride currents in immortalized mouse distal tubular cells. *Biochim Biophys Acta* **1861**: 2007-2019. DOI: 10.1016/j.bbagen.2017.05.004
- Voss FK, Ullrich F, Münch J, Lazarow K, Lutter D, Mah N, Andrade-Navarro MA, von Kries JP, Stauber T, Jentsch TJ. 2014. Identification of LRRC8 heteromers as an essential component of the volume-regulated anion channel VRAC. *Science* **344**: 634-638. DOI: 10.1126/science.1252826
- Waldmann R, Champigny G, Bassilana F, Heurteaux C, Lazdunski M. 1997. A proton-gated cation channel involved in acid-sensing. *Nature* **386**: 173-177. DOI: 10.1038/386173a0
- Wang HY, Shimizu T, Numata T, Okada Y. 2007. Role of acid-sensitive outwardly rectifying anion channels in acidosis-induced cell death in human epithelial cells. *Pflügers Arch* **454**: 223-233. DOI: 10.1007/s00424-006-0193-z
- Wemmie JA, Taugher RJ, Kreple CJ. 2013. Acid-sensing ion channels in pain and disease. *Nat Rev Neurosci* **14**: 461-471. DOI: 10.1038/nrn3529
- Xiong ZG, Zhu XM, Chu XP, Minami M, Hey J, Wei WL, MacDonald JF, Wemmie JA, Price MP, Welsh MJ, Simon RP. 2004. Neuroprotection in ischemia: blocking calcium-permeable acid-sensing ion channels. *Cell* **118**: 687-698. DOI: 10.1016/j.cell.2004.08.026
- Yamamoto S, Ehara T. 2006. Acidic extracellular pH-activated outwardly rectifying chloride current in mammalian cardiac myocytes. *AJP: Heart and Circulatory Physiology* **290**: H1905-H1914. DOI: 10.1152/ajpheart.00965.2005
- Yang J, Chen J, Del Carmen Vitery M, Osei-Owusu J, Chu J, Yu H, Sun S, Qiu Z. 2019. PAC, an evolutionarily conserved membrane protein, is a proton-activated chloride channel. *Science* **364**: 395-399. DOI: 10.1126/science.aav9739
- Yang YD, Cho H, Koo JY, Tak MH, Cho Y, Shim WS, Park SP, Lee J, Lee B, Kim BM, Raouf R, Shin YK, Oh U. 2008. TMEM16A confers receptor-activated calcium-dependent chloride conductance. *Nature* **455**: 1210-1215.