

**Single-cell RNA-seq reveals transcriptomic heterogeneity mediated by host-pathogen  
dynamics in lymphoblastoid cell lines**

Elliott D. SoRelle<sup>1,2</sup>, Joanne Dai<sup>1,3</sup>, Emmanuela N. Bonglack<sup>1,4</sup>, Emma M. Heckenberg<sup>1</sup>, Jeffrey  
Y. Zhou<sup>5</sup>, Stephanie N. Giamberardino<sup>6</sup>, Jeffrey A. Bailey<sup>7</sup>, Simon G. Gregory<sup>6</sup>, Cliburn Chan<sup>2</sup>, &  
Micah A. Luftig<sup>1\*</sup>

<sup>1</sup> Department of Molecular Genetics and Microbiology, Center for Virology, Duke University  
School of Medicine, Durham, NC, 27710, USA

<sup>2</sup> Department of Biostatistics and Bioinformatics, Duke University School of Medicine, Durham,  
NC, 27710, USA

<sup>3</sup> Current address: Amgen Inc., 1120 Veterans Blvd., South San Francisco, CA, 94080, USA

<sup>4</sup> Department of Pharmacology and Cancer Biology, Duke University School of Medicine,  
Durham, NC, 27710, USA

<sup>5</sup> Department of Medicine, University of Massachusetts Medical School, 55 N Lake Ave.,  
Worcester, MA, 01655, USA

<sup>6</sup> Duke Molecular Physiology Institute and Department of Neurology Duke University School of  
Medicine, Durham, NC, 27710, USA

<sup>7</sup> Department of Pathology and Laboratory Medicine, Warren Alpert Medical School, Brown  
University, Providence, RI, 02912, USA

\*Corresponding author: Micah A. Luftig, Department of Molecular Genetics and Microbiology,  
Center for Virology, Duke University School of Medicine, Durham, NC, 27710, USA; 919-668-  
3091; email: micah.luftig@duke.edu

## **Abstract**

Lymphoblastoid Cell Lines (LCLs) are generated by transforming primary B cells with Epstein-Barr Virus (EBV) and are used extensively as model systems in viral oncology, immunology, and human genetics research. In this study, we characterized single-cell transcriptomic profiles of five LCLs and present a simple discrete-time simulation to explore the influence of stochasticity on LCL clonal evolution. Single-cell RNA sequencing (scRNA-seq) revealed substantial phenotypic heterogeneity within and across LCLs with respect to immunoglobulin isotype; virus-modulated host pathways involved in survival, activation, and differentiation; viral replication state; and oxidative stress. This heterogeneity is likely attributable to intrinsic variance in primary B cells and host-pathogen dynamics. Stochastic simulations demonstrate that initial primary cell heterogeneity, random sampling, time in culture, and even mild differences in phenotype-specific fitness can contribute substantially to dynamic diversity in populations of nominally clonal cells.

## Introduction

Lymphoblastoid Cell Lines (LCLs) are immortalized cells prepared by *in vitro* transformation of resting primary B cells from peripheral blood with Epstein-Barr Virus (EBV).<sup>1,2</sup> LCLs are used extensively in research as a model for EBV-associated malignancies including Diffuse Large B-Cell Lymphoma (DLBCL)<sup>3,4</sup> and post-transplant lymphoproliferative disorder (PTLD).<sup>5,6</sup> Because EBV is a non-mutagenic transformant in this context, LCLs constitute an important renewable source of human cells and genomic DNA that are used in immunological, genetic, and virology research.<sup>7-11</sup>

EBV is a double-stranded oncogenic gammaherpesvirus infecting over 90% of humans.<sup>12</sup> *In vivo*, the virus typically establishes an asymptomatic persistent latent infection in episomal form<sup>13,14</sup> within resting memory B cells.<sup>15</sup> Latent infection can take one of several forms, each characterized by distinct programs of viral gene expression initiated from different promoters.<sup>16</sup> For example, classical EBV infection within resting memory B cells *in vivo* is characterized by the Latency I program in which expression from the Q promoter yields a single viral protein, EBV Nuclear Antigen 1 (EBNA1), which functions to maintain the viral episome.<sup>17</sup> Latency I, termed “true latency,” is established only after a complex progression of infection through pre-latency, Latency IIb, Latency III, and restricted forms of latency (e.g., Latency IIa), each occurring in distinct tissues within the body.<sup>16</sup> EBV can undergo lytic reactivation as a replication strategy, which is relatively infrequent in cell culture despite being essential for transmission *in vivo*.<sup>18</sup>

*In vitro*, the process of LCL production also necessarily involves multiple transitions in viral transcriptional programs. In the immediate-early stage of infection (the pre-latent phase), expression from the W promoter yields EBNA-LP, EBNA2, and several noncoding RNAs (EBERs, BHRF1 miRNAs, and BART miRNAs). A brief burst of lytic gene transcription (without lytic replication) is also observed during pre-latency.<sup>19</sup> EBNA-LP and EBNA2 protein levels increase gradually within these early-infected cells, eventually leading to Latency IIb in which

EBNA2 activation of the C promoter upregulates expression of EBNA1, EBNA3A, EBNA3B, EBNA3C and additional EBNA-LP and EBNA2 proteins as well as noncoding RNAs.<sup>20</sup> Latency IIb gene products induce hyperproliferation, a period of several days during which infected B cells divide every 10-12 hours.<sup>21</sup> During hyperproliferation, EBNA1 mediates viral genome replication while EBNA3A-C inhibit host cell antiviral and tumor-suppression responses. Variance in virally-mediated rates of proliferation ensures that some infected cells undergo DNA damage-induced growth arrest<sup>21,22</sup> while others continue to proliferate, eventually outgrowing as immortalized LCLs. LCLs largely exhibit the Latency III transcriptional profile, characterized by expression of all six EBNAs (EBNA-LP, EBNA1, EBNA2, and EBNA3A-3C) in addition to Latent Membrane Proteins 1 and 2 (LMP-1, LMP-2A/B) and noncoding RNAs.<sup>23</sup> In Latency III, EBNA2 stimulates expression of LMP-1, a constitutively active Tumor Necrosis Factor Receptor (TNFR) homolog.<sup>24</sup> LMP-1 signaling drives proliferation and survival via NF $\kappa$ B pathway activation,<sup>25</sup> which has been shown to be essential for LCL outgrowth.<sup>26</sup>

Although studied extensively, complete characterization of the viral and host determinants of growth arrest versus immortalization of early-infected cells remains elusive.<sup>27</sup> As one consequence, it is unclear whether or to what extent viral transformation may influence the resulting LCL cell populations. The possibility of significant phenotypic diversity within and across LCL samples warrants consideration, given the intrinsic variance of the human primary B cell repertoire<sup>28,29</sup> and the multiplicity of viral transcription programs active in the journey to immortalization. Indeed, we recently described a gene expression program having low expression of LMP1 and NF $\kappa$ B targets which was unique to early infection (Latency IIb) relative to an otherwise identical population of LCLs.<sup>30</sup> The wide distribution in LMP1 and NF $\kappa$ B target expression levels within an LCL has been characterized and ascribed to the dynamic sampling of a distribution of immune evasive states, at the fringes of which growth and survival can be compromised.<sup>31-33</sup>



In this study, we characterize the transcriptomic profiles of five different LCLs with single-cell resolution to assess inter- and intra-sample heterogeneity. Four of the sampled LCLs (two in-house and two commercial cell lines) were transformed with the prototypical B95-8 strain of EBV derived from an infectious mononucleosis patient,<sup>34</sup> while a fifth sample (in-house) was prepared from cells transformed with the M81 strain isolated from a human nasopharyngeal carcinoma (NPC) sample.<sup>35,36</sup> Primary cells used in establishing the five LCLs were isolated and transformed from a total of four donors; cells from one donor were transformed concomitantly to establish LCLs with each of the tested EBV strains. We observe B cell genetic heterogeneity in the form of differential heavy chain isotype expression across LCLs and, in three instances, within a sample. Further, comparable patterns of phenotypic variance with respect to NF $\kappa$ B pathway and plasma cell-like differentiation genes are evident in each LCL. Expression of host and viral genes indicate that individual cells within LCLs occupy a continuum of infection states. We also present an initial stochastic model to explore factors beyond the nuances of host-pathogen interactions that may generate profound phenotypic diversity within cultured cell lines. Our findings highlight some of the underappreciated complexity inherent within LCLs and broadly underscore the importance of understanding and accounting for sources of heterogeneity within presumptive cell lines.

## **Results**

### **LCL generation and data provenance**

Three LCLs were prepared in-house by infection of PBMCs from two donors (sample numbers 461 and 777) with one of two different EBV strains (B95-8 or M81). Each of these three samples (LCL 461 B95-8, LCL 777 B95-8, and LCL 777 M81) was prepared and processed using standard single-cell RNA sequencing workflows (see Experimental Methods). Two additional, publicly available datasets were obtained for commercially available samples of the GM12878 and GM18502 LCLs, which were generated as previously reported by Osorio and

colleagues.<sup>37</sup> These five samples yielded single-cell RNA count matrices for subsequent analysis.

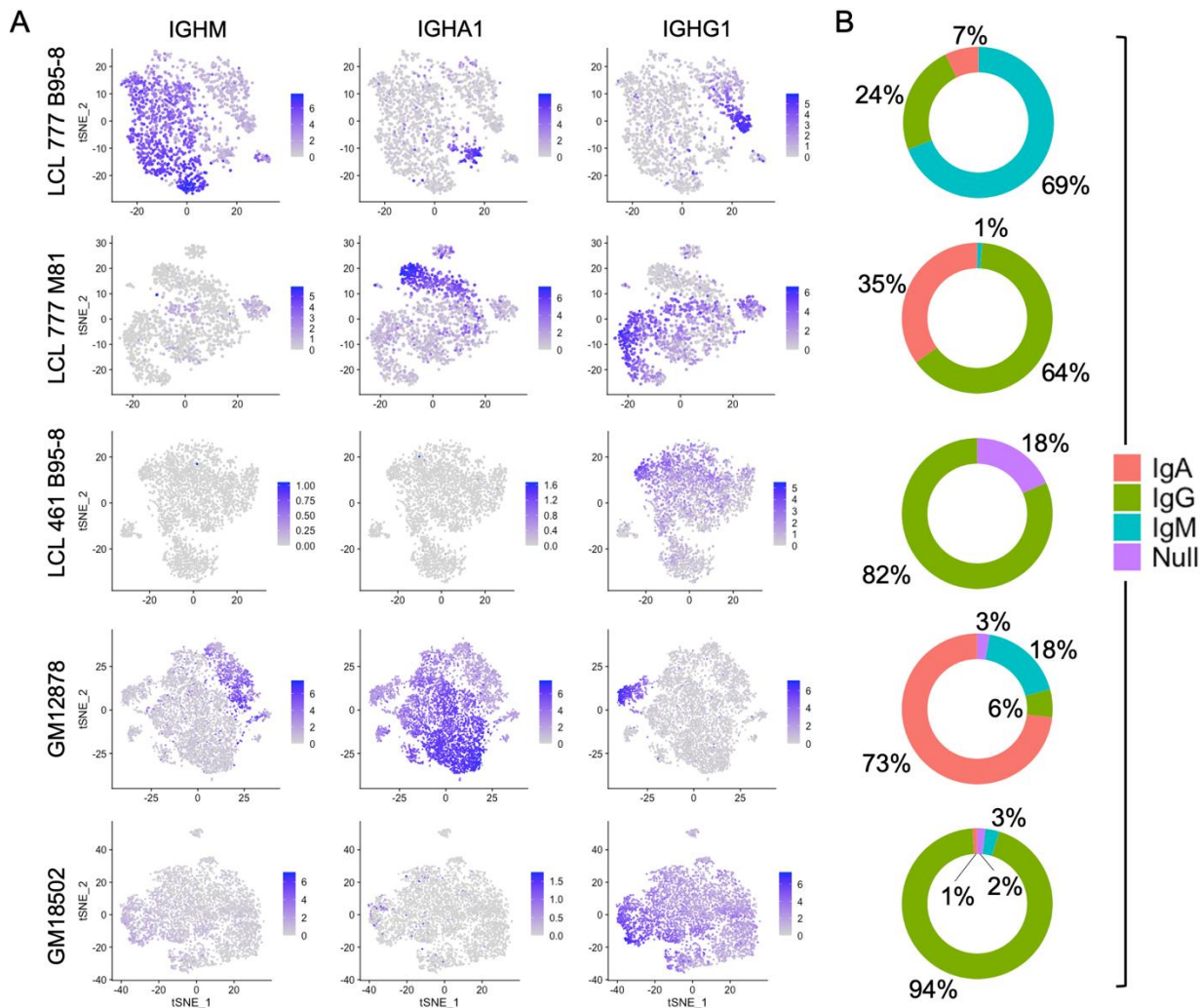
#### LCL sample QC

Count matrices for the five samples exhibited similar feature, total RNA count, and mitochondrial gene distributions (**Figure 1 – figure supplements 1 & 2**) and were subjected to standardized QC thresholding (see Experimental Methods). Cell cycle marker expression (**Figure 1 – figure supplement 3**) was scored and regressed out during selection of highly variable genes as features to avoid clusters arising solely from cell cycle phase. Selected features were used to derive principal components which were evaluated (**Figure 1 – figure supplement 4**) and subsequently used for dimensional reduction (see Experimental Methods). Separate analysis of the merged sample dataset indicated that inter-donor variability is the predominant source of heterogeneity (**Figure 1 – figure supplement 5**).

#### Immunoglobulin isotype heterogeneity within and across LCL samples

The five LCL populations exhibit distinct immunoglobulin (Ig) profiles with respect to both gene expression levels and isotype frequencies (**Figure 1**). Three of the five samples (LCL 777 B95-8, LCL 777 M81, and GM12878) contain IgM<sup>+</sup> and class-switched IgA<sup>+</sup> and IgG<sup>+</sup> subpopulations, whereas two samples (LCL 461 B95-8 and GM18502) almost exclusively expressed IgG (*IGHG1-4*) (**Figure 1A**). Additionally, cells within each isotype class exhibit a wide range of Ig transcript levels across all samples in an apparent class-independent fashion. No significant expression of *IGHE* was observed in any of the five samples, consistent with the isotype's rarity in the peripheral blood.<sup>38,39</sup> The immunoglobulin compositions observed for each LCL were confirmed subsequently by RT-PCR and sequencing, which revealed that each isotype represents a distinct clone within the culture (**Figure 1 – figure supplement 6**). Significant *IGHD* transcript levels were observed in one sample (LCL 777 B95-8), where the

gene's expression was constrained to (and varied inversely with expression levels of) IgM<sup>+</sup> cells (Figure 1 – figure supplement 7).



**Figure 1. Immunoglobulin isotype heterogeneity within and across LCLs. (A)** Relative expression of immunoglobulin heavy chain genes (*IGHM*, *IGHA1*, *IGHG1*) in five LCLs analyzed by single-cell RNA sequencing. Data are represented by dimensional reduction (t-distributed Stochastic Neighbor Embedding) of principal components generated from feature selection following out-regression of cell cycle markers (see Experimental Methods). **(B)** Percent of cells in LCL population within each isotype class. Null classification represents cells exhibiting negligible immunoglobulin heavy chain expression.

The proportion of cells expressing each isotype varied substantially among LCLs (Figure 1B). IgG was the only isotype observed in LCL 461 B95-8. Cells in the GM18502 sample were also homogenous for *IGHG1*, although low levels of *IGHM* transcripts are observed in up to half of the population. The proportion of IgM<sup>+</sup>, IgA<sup>+</sup>, and IgG<sup>+</sup> subpopulations in LCL 777 B95-8 were

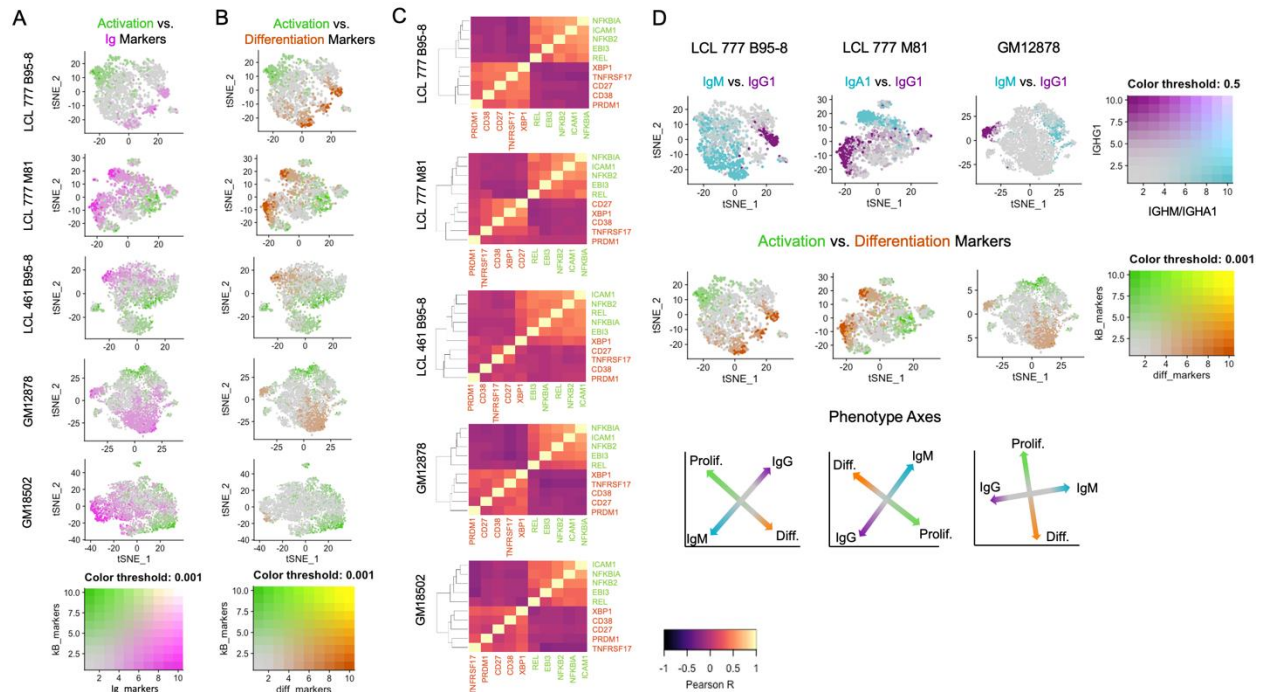
(69%, 7%, 24%); in LCL 777 M81 were (1%, 35%, 64%); and in GM12878 were (6%, 73%, 18%). Abundance of Ig light chain gene (kappa or lambda) and heavy chain isoform expression are generally correlated with variable heavy chain expression in each of the five samples (**Figure 1 – figure supplements 7-16**). The isotype and clonal frequency differences between LCL 777 B95-8 and LCL 777 M81 are notable, given that these samples originated from the same donor and were transformed at the same time with different viral strains.

Differential Ig isotype expression is a significant source of variation in LCLs, as captured by the loadings from principal component analysis (PCA), typically within the first four PCs. Consequently, differences in Ig isotype are effectively captured in dimensionally reduced datasets generated from PCs using t-distributed Stochastic Neighbor Embedding (tSNE) even at low clustering resolution. In samples with more homogenous isotype expression (LCL 461 B95-8 and GM18502), the relative Ig expression level is a significant factor in distinguishing clusters.

#### Genes involved in B cell activation and differentiation exhibit inverse expression gradients

Across all samples, LCL populations display variable mRNA transcript levels for genes involved in cell activation, inhibition of apoptosis, response to oxidative stress, and differentiation (**Figure 2**). Gradients in Ig expression exhibit strong anticorrelation with expression of NF $\kappa$ B pathway transcripts (e.g., *NFKB2*, *NFKBIA*, *EBI3*) central to B cell activation and survival (**Figure 2A, Figure 2 – figure supplement 1A**). Similar gradients are observed for metabolic and oxidative stress response transcripts (e.g., *TXN*, *PRDX1*, *PKM*, *LDHA*, *ENO1*, *HSP90AB1*), however these transcripts are present more broadly (>80% of cells) and at higher levels than NF $\kappa$ B-related genes (20-30% of cells) in each sample (**Figure 2 – figure supplement 2**). While NF $\kappa$ B family gene expression is consistently anticorrelated with that of B cell differentiation factors, significant diversity exists in NF $\kappa$ B-high cells with respect to

specific subunits including *REL*, *RELA*, and *RELB* (Figure 2 – figure supplement 3). This implies differential intercellular NFκB dimer composition and, consequently, intra-sample variation in NFκB-mediated transcriptional programs. Expression of NFκB regulated BCL2



family members (e.g., *BCL2L1*/Bcl-xL and *BCL2A1*/BFL1) displays strong anticorrelation with Ig expression level. However, *MCL1* and *BCL2* mRNAs are more broadly expressed across cells within each LCL, while *BCL2L2*/BCL-W is only modestly expressed in LCLs (Figure 2 – figure supplement 4).

**Figure 2. LCLs exhibit anticorrelated expression gradients of activation and differentiation genes.** (A) Inverse expression gradients of immunoglobulin genes (*IGHM*, *IGHA1*, *IGHG1*) in magenta and NFκB targets (*NFKB2*, *NFKBIA*, *EBI3*, *ICAM1*, *BCL2A1*) and *TXN* in green. (B) Similar inverse gradients of NFκB targets in green and B cell differentiation markers (*TNFRSF17*, *XPB1*, *MZB1*, *CD27*, *CD38*) in orange. (C) Pearson correlation maps and hierarchical clustering reveals negative correlation of differentiation (orange) and activation (green) gene sets and positive correlations between genes within each set. (D) In LCLs comprising multiple immunoglobulin isotypes, heavy chain class and differentiation/activation gradients constitute orthogonal (independent) axes of phenotypic variance.

Ig gradients are closely related to expression of differentiation and maturation markers (e.g., *CD27*, *TNFRSF17*/BCMA, *XPB1*, *MZB1*, *PRDM1*),<sup>40-42</sup> which are likewise anti-correlated with NFκB pathway markers (Figure 2B-C, Figure 2 – figure supplement 1B). The apparent

inverse relationship between these gene sets defines a major axis of phenotypic variance within LCL samples comprising multiple Ig isotypes (**Figure 2D**). The orthogonality of the pro-survival/differentiation and isotype class diversity axes implies that these two aspects of phenotypic variance are decoupled. Continuity between phenotypes resembling activated B cells (ABC) and antibody-secreting cells (ASC) is also captured in the expression profiles of key genes involved in the mutually antagonistic control of B cell state (**Figure 2 – figure supplement 5**).<sup>43</sup> In this model, genes including *PAX5* and *IRF8* promote the ABC state; *IRF4* and *MKI67* (a G2/M cell cycle marker) are markers of a transitional phenotype; and *PRDM1* (BLIMP1) and *XBP1* promote the ASC state. As cell cycle marker expression was regressed out, mitotic phase has negligible influence on the observed trends.

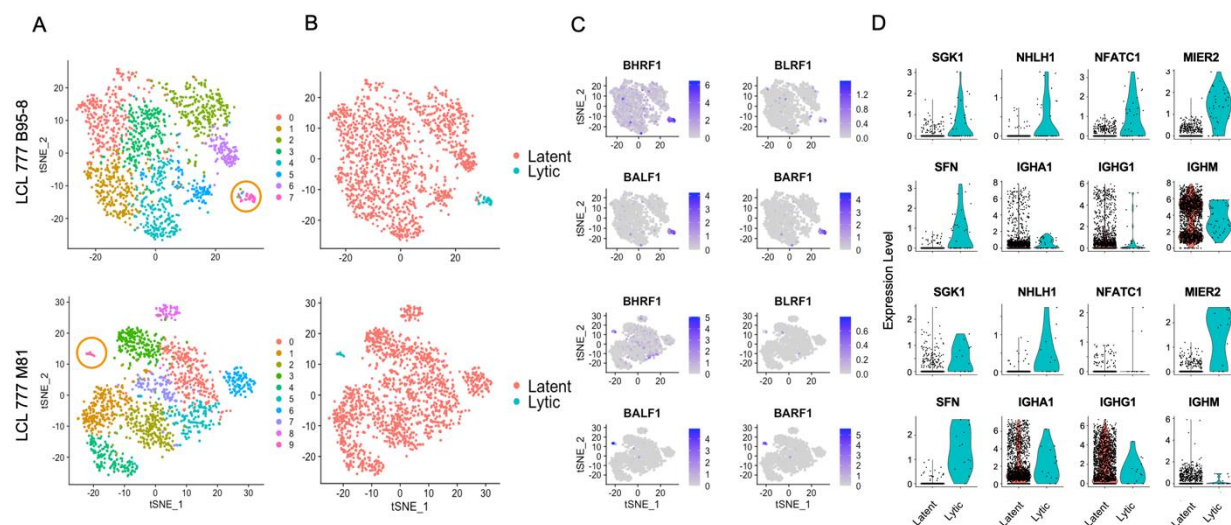
Whereas distinctions in Ig isotype class expression tend toward discrete partitioning, intra-isotype expression of differentiation and maturation genes reflects a continuum of transcriptomic states and cellular functions. Thus, within a given isotype, elevated Ig heavy chain expression is negatively correlated with activation/anti-apoptotic gene expression and positively correlated with maturation/differentiation gene expression. These relationships are most readily evident in LCL samples consisting of a single class-switched population, such as GM18502 (**Figure 2 – figure supplement 1C**).

Finally, the viral EBNA2 and EBNA3 proteins are responsible for transcriptional regulation that we specifically interrogated within the single cell data. The direct EBNA2 targets *RUNX3* and *FCER2/CD23* correlated with NF $\kappa$ B expression (**Figure 2 – figure supplement 6**).<sup>44</sup> Indeed, the expression of *RUNX3* and *FCER2/CD23* was anticorrelated with Ig expression consistent with the known role of EBNA2 in suppressing heavy chain transcription.<sup>45</sup> In contrast, the EBNA3 repressed targets including *CXCL9*, *CXCL10*, *BCL2L11/BIM* and *ADAMDEC1* were uniformly repressed (**Figure 2 – figure supplement 7**) consistent with the role of histone and DNA methylation in maintain gene repression of EBNA3 targets.<sup>46-48</sup>

Differential expression of genes involved in cell activation could affect rates of cell proliferation within an LCL population. To explore this possibility, we sorted three additional LCLs by ICAM-1 expression and evaluated the growth and metabolic profiles of the sorted fractions. On average, ICAM-1<sup>hi</sup> cells (consistent with the ABC phenotype) exhibited modestly faster growth in culture than ICAM-1<sup>lo</sup> cells (ASC phenotype) between 1-4 days post-sorting. Notably, metabolic activity was elevated in ICAM-1<sup>hi</sup> cells than ICAM-1<sup>lo</sup> cells across all three LCLs, as indicated by higher rates of glycolysis and oxygen consumption (**Figure 2 – figure supplement 8**).

#### Viral state heterogeneity affects host expression profile distributions in LCLs

Clusters with high EBV lytic gene expression are observed in two of the three datasets (LCL 777 B95-8 and LCL 777 M81) aligned against the human reference genome containing the viral genome as an extra chromosome (see Experimental Methods) (**Figure 3**). Lytic cluster cells are small, accounting for 2.2% and 0.9% of the LCL 777 B95-8 and LCL 777 M81 cell populations, respectively (**Figure 3A**). The higher rate of lytic cell capture in the B95-8 sample relative to the M81 sample is somewhat surprising, as the M81 strain is known for increased frequency of lytic reactivation; however, this disparity may originate from the nature of single-cell sample preparation method (see Discussion).<sup>49</sup>





**Figure 3. Viral and host gene expression in lytic cell subpopulations.** (A) Clustering of dimensionally reduced datasets for LCL 777 B95-8 and LCL 777 M81. (B) Grouping of cell clusters into latent (red) and lytic (cyan) cells based on viral and host gene expression signatures of principal components. (C) Relative expression of four representative EBV lytic genes (*BHRF1*, *BLRF1*, *BALF1*, and *BARF1*) is elevated in lytic cell subpopulations. (D) Lytic cell clusters exhibit elevated expression of several host cell genes (*SGK1*, *NHLH1*, *NFATC1*, *MIER2*, *SFN*) relative to latently infected cells. While under-sampled due to subpopulation size, immunoglobulin class frequencies in lytic cells roughly reflect the population-wide frequencies.

The presence or absence of viral lytic transcripts is a significant source of phenotypic variance in these samples, as reflected in population groupings by viral state (**Figure 3B**) and principal component loadings (**Figure 1 – figure supplements 15 & 16**, PC\_3 and PC\_7, respectively). Lytic cells can be identified confidently from high expression of EBV genes including *BLRF1*, *BALF1*, and *BARF1*, among others (**Figure 3C**). *BHRF1* expression is also elevated in lytic cells, although *BHRF1* transcripts are ubiquitous at low levels sample wide. This is likely because *BHRF1* can be expressed during both latent and lytic phases of EBV infection from different promoters.<sup>50</sup> Cells identified as lytic exhibit lytic gene expression ranging from approximately 3-15% of total measured transcripts per cell (**Figure 3 – figure supplement 1**). Thus, it is possible that this cluster represents both truly lytic cells (>10% lytic transcripts) as well as abortive lytic cells.<sup>51</sup> Alternatively, the cells with lower lytic transcript expression may have been at earlier stages of lytic reactivation at the time of sample preparation.

While the absolute number of lytic cells in each sample is low, the data indicate that the lytic cells are polyclonal with respect to Ig heavy chain expression, display upregulation of several host genes including *NFATC1*, *MIER2*, *SFN*, and *SGK1*, and exhibit heterogeneous NFκB expression (**Figures 3D, Figure 1 – figure supplements 5 & 6**). Ig isotype distributions in lytic cell clusters appear roughly proportional to the whole-sample distributions. *NFATC1*, *MIER2*, *SFN*, and *SGK1* transcript levels were queried for GM12878 and GM18502 samples to test whether the presence of lytic cell subpopulations might be inferred from host gene expression. A sub-cluster representing a small percentage of cells in GM12878 (<0.5%) were found to co-

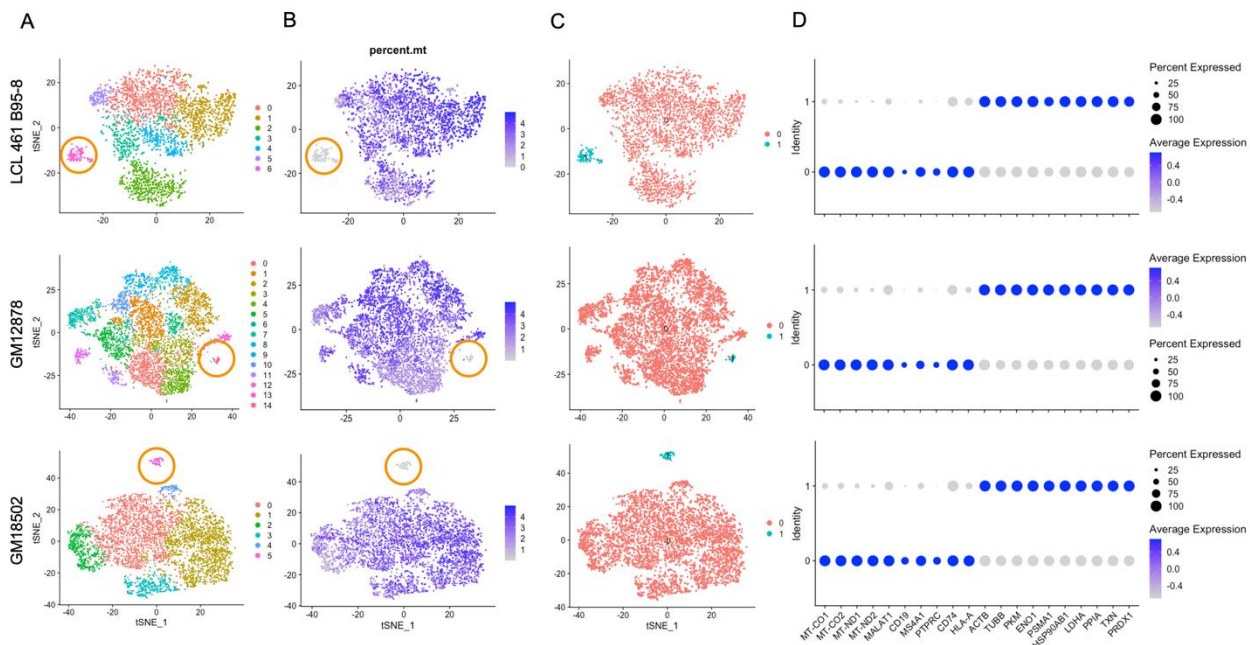


express *MIER2* and *NFATC1*. Negligible expression of either gene was observed in GM18502 (Figure 1 – figure supplements 8 & 9).

# Loss of mitochondrial and Ig expression in subpopulations under oxidative stress

Three of the five samples (LCL 461 B95-8, GM12878, and GM18502) contain clusters that exhibit metabolic transcriptional profiles in stark contrast with typical expression in each population (Figure 4). Cells within these clusters account for 1-4% of the three samples after QC (Figure 4A) and are most notable for their low expression of mitochondrial genes (Figure 4B). In the case of LCL 461 B95-8 and GM18502, these cells are the first to partition from the rest of the sample at low clustering resolution (Figure 4 – figure supplements 1-5).

Compared to the rest of each sample, these atypical cells exhibit significantly depleted levels of cytochrome c oxidase (*MT-CO1* & 2, complex IV) and NADH-ubiquinone oxidoreductase subunits (*MT-ND1* & 2, complex I) as well as a lack of canonical markers of lymphoid (e.g., *PTPRC/CD45*, *CD74*), B cell-specific lineage (e.g., *CD19*, *MS4A1/CD20*), and in some cases, MHC class I & II antigen presentation (e.g., *HLA-A*, *HLA-B*, *HLA-C*, *HLA-DR*) (Figures 4C-D, Figure 1 – figure supplements 7 & 9, Figure 4 – figure supplement 6).



**Figure 4. LCL subpopulations exhibiting reduced mitochondrial gene expression and elevated metabolic and oxidative stress genes.** (A) Clustering of dimensionally reduced datasets for LCL 461 B95-8, GM12878, and GM18502. (B) Distinct clusters within each of these samples are defined by uncharacteristically low mitochondrial gene expression. (C) Grouping of cell clusters to partition “mito-low” cells (cyan) for differential expression comparison. (D) Mito-low cells exhibit reduced expression of cytochrome oxidase (*MT-CO1*, *MT-CO2*), NADH-ubiquinone oxidoreductase (*MT-ND1*, *MT-ND2*), *MALAT1*, and numerous lymphoid and B-cell lineage markers (*CD19*, *MS4A1/CD20*, *PTPRC/CD45*, *CD74*, *HLA-A*). Mito-low cells exhibit increased expression of genes associated with cytoskeletal rearrangements (*ACTB*, *TUBB*), metabolic stress (*PKM*, *ENO1*, *LDHA*) protein folding/degradation (*HSP90AB1*, *PSMA1*, *PPIA*), and oxidative stress (*TXN*, *PRDX1*).

Expression of genes involved in oxidative stress (*TXN*, *PRDX1*), unfolded protein responses (*PPIA*, *HSP90AB1*), metabolic shunt pathways (*PKM*, *ENO1*, *LDHA*), and cytoskeletal rearrangements (*ACTB*, *TUBB*) is enriched consistently in this subset relative to the bulk population in each of the three LCLs (**Figure 4D**, **Figure 2 – figure supplement 2**). Ig heavy chain transcripts are notably absent from these subpopulations, although some degree of light-chain expression is observed (**Figure 1 – figure supplements 7-9**). While these cells are on the low end of the population distribution with respect to total RNA counts and unique feature RNAs (**Figure 4 – figure supplement 7**), the measured values are consistent with intact, viable cells.

#### A stochastic model for LCL phenotypic heterogeneity

A simple stochastic simulation based on a discrete-time Markov chain model<sup>52</sup> was developed to understand better the factors that may influence phenotypic heterogeneity observed in LCLs, using Ig isotype frequencies as an example (**Figure 5**). In principle, the simulation may be adapted to any set of phenotypes within a sample. For additional details regarding model parameters and assumptions, please see the Experimental Methods (Stochastic Simulations) and refer to the source code (**Source Code File 2**).

In the present implementation, changes in Ig isotype frequency can be simulated in discrete steps (rounds of cell division) as a function of initial phenotype frequencies, population sampling (with replacement), and potential differences in phenotypic fitness captured as fixed, (un)equal

isotype-specific proliferation probabilities. The model assumes a fixed cell death rate across all isotypes in any given division round. The number of simulated trials can be adjusted to capture individual stochastic realizations or probabilistic outcome distributions. Each parameter and assumption can be adjusted by the user for tailored applications.

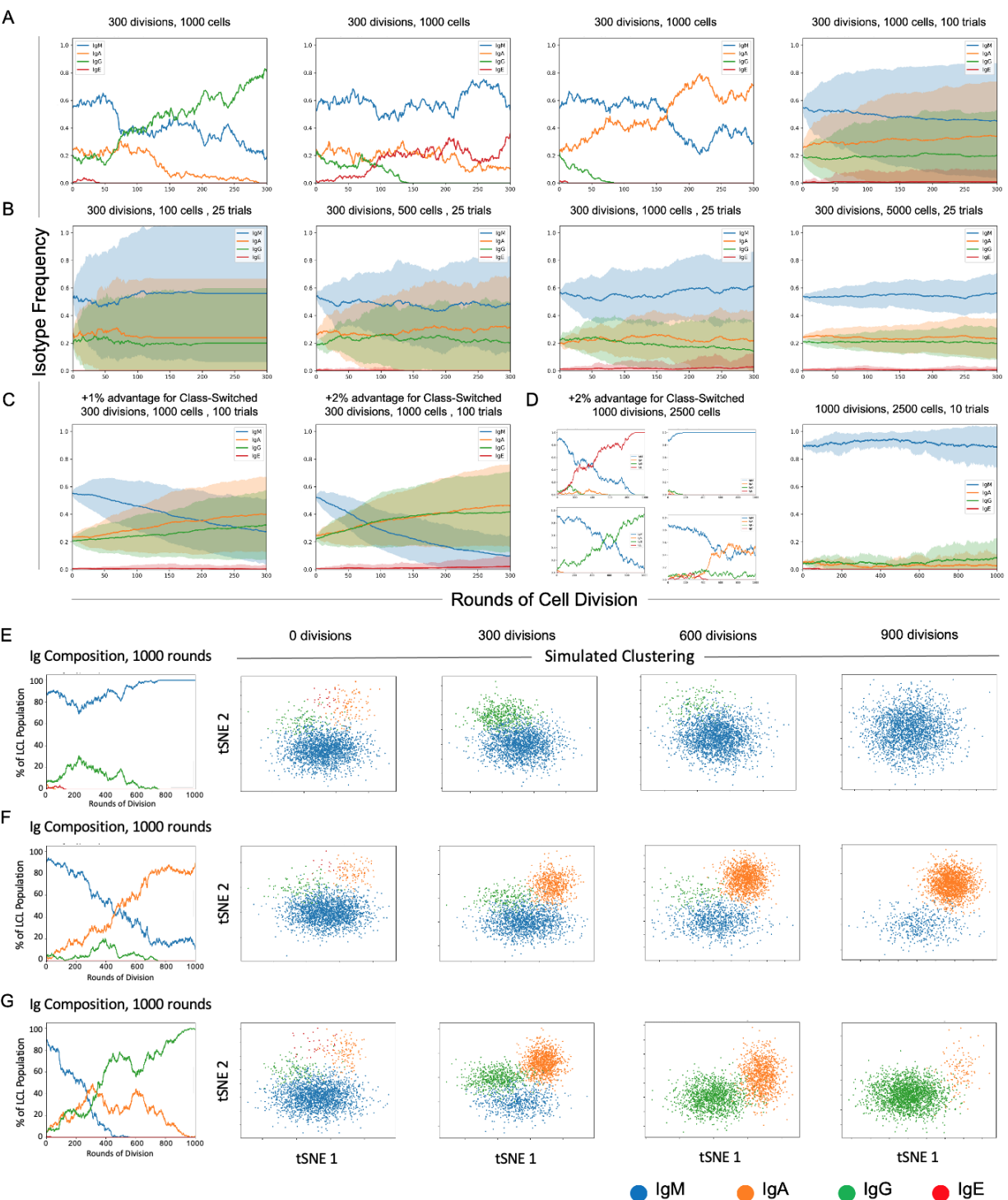
Three randomly selected realizations and averaged outcomes (trials = 100) of the model for a fixed sample size ( $n = 1000$  cells) demonstrate the effects of intrinsic stochasticity on the evolution of phenotype proportions over many rounds of cell division (rounds = 300), even when each phenotype confers equivalent fitness (**Figure 5A**). In the case of equal fitness and sufficient sample size, initial phenotype frequencies are a key determinant of whether the most prevalent phenotype will change over time because of stochasticity.

The effect of sample size on inter-trial variance can be substantial, even when cell populations are sampled with replacement to maintain phenotype proportions in each round (**Figure 5B**). Mean phenotype proportions are generally conserved, whereas trial standard deviation decreases as the sample size increases (trials = 25, rounds = 300,  $n = 100, 500, 1000$ , or  $5000$  cells). This is generally expected, since undersampling increases the likelihood that phenotype frequencies in the drawn sample will deviate from those of the population, even in the case of replacement.

It is notable that minor differences in relative fitness (1-2%) can lead to dramatic changes in isotype distributions over time (**Figure 5C**). The rate of such change is proportional to the magnitude(s) of fitness differences ( $n = 1000$  cells, rounds = 300). Four randomly selected clonal evolution trajectories realized with a modest fitness advantage (2%) for class-switched cells (IgA, IgE, and IgG) reveal the potential for drastic variations when multiple rare phenotypes with a fitness advantage exist ( $n = 2500$  cells, trials = 10, rounds = 1000). Thus, rare cells may become prevalent or even dominant over time if they exhibit only slightly greater fitness relative to other cells in some environmental context (e.g., cell culture). In such cases, observed

phenotype frequencies can deviate wildly from expectations of equal fitness over time (**Figure 5D**).

Cluster simulation was implemented by random sampling from four arbitrary, isotype-specific 2D normal distributions based on empirical observations that Ig isotypes yield distinct clusters in dimensionally reduced single-cell RNA-seq data (**Figures 5E-G**). Simulated clusters were generated from randomly selected trials initiated from the same initial phenotype distribution (IgM = 89%; IgA = 5%; IgG = 5%; IgE = 1%) at three different relative fitness advantages (0%, 1%, and 2%) for class-switched isotypes. In all cases, the proportion of observed cells in each cluster fluctuates over time. As expected, the presence or absence of observed phenotypic heterogeneity (in this example, isotype polyclonality) in a cell population is a complex function of relative frequency, fitness, sampling (i.e., bottlenecks), stochasticity, and time.<sup>53,54</sup>



**Figure 5. Stochastic simulation of heterogeneous LCL evolution.** (A) Stochastic immunoglobulin isotype frequency evolution. Three random single-trial simulations initiated from the same starting class frequencies are presented, assuming equal likelihood of proliferation across isotype classes (n = 1000 cells). The last panel shows mean and standard deviation for outcomes from 100 trials simulated from the same parameters. (B) Simulation of a founder effect. Population under-sampling (modeled by comparing results from 25 trials using n = 100, 500, 1000, and 5000 cells, left-to-right panels) increases outcome

variance and accelerates convergence to a single isotype. **(C)** Effect of phenotype-specific fitness advantages. Simulation results are presented for scenarios in which class-switched isotypes (IgA, IgG, IgE) have a 1% (left panel) or 2% (right panel) fitness advantage over IgM cells. **(D)** Four random single-trial simulations over long periods of time (1000 division rounds) with a 1% fitness advantage for class-switched cells (left panels) compared to 10 trials over the same period with equal fitness across classes. **(E)** Single-trial isotype frequency evolution and corresponding simulated clustering (see Experimental Methods) in the case of equal proliferation probability. Starting frequencies of IgM, IgA, IgG, IgE cells are 89%, 5%, 5%, and 1%, respectively. **(F)** As in E, with a 1% fitness advantage for class-switched cells. **(G)** As in E, with a 2% advantage for class-switched cells.

## Discussion

### Ig isotype heterogeneity in LCLs

LCL clonality is known to change over time, although the factors involved in this evolution are not fully characterized.<sup>55</sup> PBMC derivation from multiple donors is an obvious source of cellular heterogeneity in the analyzed samples presented herein. B cells from peripheral blood ( $\approx$  5-10% of all lymphocytes) comprise wide ranges of naïve ( $\approx$  50-80%, mean  $\approx$  65%) and memory ( $\approx$  15-45%, mean  $\approx$  30%) cells, with immature/transitional and plasmablasts accounting for smaller proportions ( $\approx$  1-10%, mean  $\approx$  5% and  $\approx$  0.5-4.5%, mean  $\approx$  2%, respectively).<sup>29</sup> Within the memory cell compartment, proportions of non-switched (IgM) and switched memory (IgA, IgG, and technically, IgE) are also likely donor-specific. The negligible number of IgE<sup>+</sup> cells present across the samples can be explained by the isotype's low frequency in the peripheral blood.<sup>38</sup> A notable limitation of this study is the lack of access to (GM12878 and GM18502) or retention of (LCL\_461 and LCL\_777) original donor primary B cells and longitudinal sampling, which would have provided direct insight into donor-dependent cellular heterogeneity.

It is evident from LCL 777 B95-8 and LCL 777 M81 samples that inter-donor differences cannot fully explain the observed isotype heterogeneity in LCLs. While it may be tempting to attribute the observed differences to infection with different viral strains, there is ample experimental evidence that EBV infection does not induce class-switching.<sup>56</sup> The disparity in

isotype frequencies is notable since these samples were transformed, cultured, prepared, and sequenced in parallel (i.e., under equivalent conditions and within the same interval).

The polyclonality exhibited within LCL 777 B95-8 and LCL 777 M81 contrast with the dominance of a single isotype in LCL 461 B95-8 and GM18502 samples (in each case, IgG). The only notable difference between LCL 461 B95-8 and LCL 777 B95-8 is that the former sample was in culture substantially longer prior to single-cell library preparation. Given that the GM18502 line was derived more than a decade ago, these observations implicate the influence of culture period in significantly altering the isotype proportions present within LCLs, which is altogether consistent with known (and profound) challenges associated with cell culture.<sup>57-59</sup> In this regard, the data from GM12878 merit remark. The finding of polyclonality in this sample is surprising, given that GM12878 has been in culture over a timescale comparable to GM18502.<sup>60</sup> Forgoing the possibility of errors in sample handling or procurement, the persistence of genetic heterogeneity in this line is both intriguing and potentially confounding. Whether or to what extent cellular diversity may influence observed results will inevitably vary on a study-specific basis, but sample-intrinsic variance should be considered even when homogeneity is presumed.<sup>8,61</sup>

Multiple isotypes within an LCL sample guarantee clonal diversity, but the presence of a single isotype does not necessarily ensure the inverse (intra-sample homogeneity). While not in the scope of the present study, B Cell Receptor (BCR) 5' single cell sequencing of LCL samples could provide insight into variable regions and whether subpopulations of a given isotype are the progeny of one or multiple founder cells (and whether this changes over time).

#### Viral origins of LCL phenotypic variance

NF $\kappa$ B pathway signaling is constitutively activated by viral Latent Membrane Protein 1 (LMP-1) in EBV-transformed B cells.<sup>25</sup> LMP-1 induction of the NF $\kappa$ B pathway is necessary for LCL

survival;<sup>26,62,63</sup> however, the observed intra- and inter-LCL variance in transcript levels of NFκB and several of its transcriptional targets add nuance to this picture. Similar profiles of NFκB pathway transcript levels across samples may constitute a snapshot of the most probable distribution arising from stochastic NFκB target expression induced by EBV infection. This may arise from a transcriptional bursting mechanism in which mRNA transcript levels in each cell fluctuate over time (as a Poisson process) while the proportion of cells containing  $n$  transcripts in a population at any given time is roughly constant.<sup>64-68</sup> Alternatively, or perhaps additionally, variation in NFκB pathway activity may be a manifestation of the different viral latency states present within each sample, as indicated by correlation with host markers of latency IIb and III.

The distinct anti-correlation between NFκB/viral latency program and B lymphocyte differentiation genes is noteworthy. While a mechanism imparting causality to this relationship is not yet fully clear, recent time-resolved bulk transcriptomic data revealed that EBV-induced plasma cell phenotypes (including upregulation of *XBP1*) developed as early as the pre-latent phase of infection (1-14 days).<sup>27</sup> Correlated expression of *MZB1* with *XBP1*, *TNFRSF17*, *CD27*, and *CD38* support the model that the development of plasma cell characteristics is reminiscent of germinal center differentiation. Single-cell data adds complexity to this finding and its consequences for LCL heterogeneity even after long-term outgrowth. Specifically, EBV transformation *in vitro* appears to maintain B cells along a continuum of differentiation states, each with varying degrees of similarity to phenotypes observed *in vivo*.<sup>16</sup> In the case of LCL generation, the multiple transcriptional programs of the transformant likely constitute an inescapable source of phenotypic heterogeneity.

The low number of observed lytic cells is likely a consequence of EBV's predominant latency and the fact that lytic reactivation is by nature somewhat incompatible with single-cell RNA-seq methods. However, these small subpopulations provide an interesting case for examination. The spatial proximity of lytic clusters in LCL 777 B95-8 and LCL 777 M81 to



plasma-like clusters resulting from tSNE dimensional reduction implied phenotypic similarity, however we found that this is likely an artifact of the tSNE algorithm since UMAP dimensional reduction did not preserve this proximity. Notwithstanding, *XBPA* upregulation in plasma cells has been shown to transactivate the viral *BZLF1* promoter and induce lytic reactivation.<sup>69,70</sup> Lytic cells also display relatively high and polyclonal Ig heavy chain expression in addition to other shared characteristics with plasma-like cells (reduced expression of NFκB subunits and its targets). By contrast, lytic cells exhibit notably reduced levels of B cell differentiation transcripts. Thus, viral transcription changes in dynamic response to host cell programs (and vice versa) contribute to the observed LCL diversity. Prior work has shown that the viral proteins EBNA3A and EBNA3C suppress plasma-like phenotypes during EBV latency establishment.<sup>71</sup> The possibility that EBV may undergo lytic reactivation in response to plasma cell differentiation as a means of maintaining persistent latent infection is a topic of future interest.

Host genes upregulated within lytic cluster cells (e.g., *NFATC1*, *MIER2*, *SFN*, *SGK1*) represent a limited subset of transcription factors associated with B (and T) lymphocyte activation<sup>72,73</sup>, several of which have been recently identified at various degrees of enrichment within lytic cells.<sup>74</sup> The presence of *NFATC1* is particularly notable considering the recent report of this factor contributing to the spontaneous lytic phenotype of type 2 EBV by upregulating expression of *BZLF1* to promote the lytic gene expression cascade.<sup>75</sup>

Although PC loadings reveal substantial upregulation of more than a dozen EBV lytic genes, cells within the lytic clusters curiously lack expression of *BZLF1*, which plays a role in the latent-to-lytic transition.<sup>18</sup> The absence of *BZLF1* reads (and low mRNA counts generally) ostensibly may result from factors including naturally low transcript abundance, reduced transcript capture efficiency, and/or reduced efficiency of reverse transcription to cDNA owing to RNA secondary structural motifs.<sup>76</sup>

#### “Marker-less” subpopulations

The small populations of cells in LCL 461 B95-8, GM12878, and GM18502 characterized by low mitochondrial gene expression and a dearth of canonical B cell markers are curiosities. These cells share similarities with exhausted plasma cells, most notably an apparent loss of Ig heavy chain expression while retaining moderate kappa and light chain expression,<sup>77,78</sup> and hallmarks of oxidative stress including upregulated thioredoxin expression.<sup>79-82</sup> Low levels of NFκB pathway transcripts in these clusters most closely resemble expression profiles of cells with a plasma-like phenotype in the same samples. It is unlikely that these cells are immature, naïve, or transitional B cells, given that neither *IGHM* nor *IGHD* expression are observed. Loss of lineage marker expression is suggestive of a tumor-like phenotype.<sup>83</sup>

#### Factors in the evolution of subclonal heterogeneity

Cellular diversity abounds even within presumptive clonal lines. For LCLs generated from EBV-transformed primary B cells, the list of parameters affecting the cell population’s phenotypic profile includes donor-specific frequencies of non-switched and switched memory B cells, heterogeneous states of viral infection, phenotype-specific differential fitness in culture, stochasticity, and time. By definition, some degree of differential fitness exists among cells in each sample as a consequence of the variability in pro-survival, proliferation, and anti-apoptotic genes. Mechanistically, a portion of this variance is expected to arise from heritable yet transient epigenetic signatures.<sup>84</sup> Indeed, epigenetic diversity affecting chromatic architecture across LCL subclones from a single donor was recently demonstrated through ChIP-Seq analysis.<sup>85</sup> Lastly, as a principle of evolution, phenotypic differences do not necessarily have to be selected directly; they may simply be carried over in cells possessing other selected features. With respect to the stochastic model presented herein, the simulated phenotype advantage of class-switched memory vs. non-switched memory cells need not be construed as originating from heavy chain isotype expression.

Experimental procedures including cell passaging and the initial transformation itself may contribute to variance among LCLs. As an illustration, consider that 1 million PBMC has around 25,000 B cells, of which 7,500 (30%) on average are memory cells of various classes. If the rate of transformation leading to LCL outgrowth is 10%, then  $\approx 750$  memory cells out of 1 million PBMCs define the initial isotype frequency of the eventual LCL. This sample size is small relative to the donor's total memory B cell compartment and may lead to founder cell effects. Consequently, B cell population undersampling may be a foregone conclusion in the context of LCL preparation.

Additional studies that utilize time-resolved single-cell sampling from original B cells through early infection and long-term LCL outgrowth in culture will be essential to explore further the factors contributing to longitudinal stability and variation in transcriptional profiles of B cells immortalized by EBV infection. Moreover, while the transcriptomic profiles we report provide a valuable resource, additional molecular layers must be interrogated through parallel -omics techniques (e.g., ATAC-seq, DNA methylation) across individual cells to understand deeply the mechanistic underpinnings of transcriptional heterogeneity.

## **Conclusion**

Single-cell RNA sequencing reveals that LCLs including widely used commercial lines exhibit substantial phenotypic diversity. During the early stages of LCL generation, EBV infection drives cell proliferation by mimicking the process of B cell activation. After successful LCL outgrowth, infected B cells occupy a range of phenotypic states along a continuum between activation and plasma cell differentiation and, in some cases, exhibit signs of lytic reactivation. The diversity observed within LCLs (and cultured lines generally) can originate from intrinsic heterogeneity within primary cells, transcriptional programs of the viral transformant, and the realization of inherently stochastic processes (including certain gene expression programs) over time. The data reported herein enable extensive hypothesis

generation and interrogation of aspects of B cell biology, EBV pathogenesis, and host-virus interactions. Moreover, this work highlights the importance of considering the possible sources and experimental consequences of cell population heterogeneity when using cultured cell lines.

## Acknowledgments

We would like to acknowledge the assistance of the Duke Molecular Physiology Institute Molecular Genomics core (Karen Abramson), the Duke Flow Cytometry Shared Resource (Mike Cook, Lynne and Nancy Martin, and Lynn Martinek) and the Duke School of Medicine Cellular Metabolism Analysis Core Facility (Nancie MacIver and Amanda Nichols) for the generation of key data in this manuscript. We also wish to thank Drs. Eric Johannsen and JJ Miranda for thoughtful discussion and feedback on this work.

Key Resources Table				
Reagent type (species) or resource	Designation	Source or reference	Identifiers	Additional information
biological sample ( <i>Homo sapiens</i> )	Whole blood	Gulf Coast Regional Blood Center		Multiple donors; sources of PBMCs for LCL_461 and LCL_777 preparation
cell line ( <i>Homo-sapiens</i> )	B95-8 Z-HT	This paper; Ref. 86		Stimulated to obtain B95-8 strain (Type 1 EBV) viral supernatants

cell line ( <i>Homo-sapiens</i> )	M81	This paper; Ref. 36		Stimulated to obtain M81 strain (Type 2 EBV) viral supernatants
cell line ( <i>Homo-sapiens</i> )	LCL_461	This paper; Ref. 86		Prepared from donor PBMCs
cell line ( <i>Homo-sapiens</i> )	LCL_777	This paper		Prepared from donor PBMCs
cell line ( <i>Homo-sapiens</i> )	GM12878	Coriell Institute	RRID: CVCL_7526	White female donor
cell line ( <i>Homo-sapiens</i> )	GM18502	Coriell Institute	RRID: CVCL_P459	Yoruba female donor
antibody	anti-human CD54 (ICAM-1), PE-conjugated (mouse monoclonal)	Biolegend	Cat #353106	Clone #HA58
sequence-based reagent	5' L-VH 1	This paper; Ref. 90	PCR primers	ACAGGTGCC CACTCCCAG GTGCAG
sequence-based reagent	5' L-VH 3	This paper; Ref. 90	PCR primers	AAGGTGTCC AGTGTGATG TGCAG
sequence-based reagent	5' L-VH 4/6	This paper; Ref. 90	PCR primers	CCCAGATGG GTCCTGTCC CAGGTGCAG

sequence-based reagent	5' L-VH 5	This paper; Ref. 90	PCR primers	CAAGGAGTC TGTTCCGAG GTGCAG
sequence-based reagent	5' L-V $\kappa$ 1/2	This paper; Ref. 90	PCR primers	ATGAGGATC CCTGCTCAG CTGCTGG
sequence-based reagent	5' L-V $\kappa$ 3	This paper; Ref. 90	PCR primers	CTCTTCCTC CTGCTACTC TGGCTCCCA G
sequence-based reagent	5' L-V $\kappa$ 4	This paper; Ref. 90	PCR primers	ATTTCTCTG TTGCTCTGG ATCTCTG
sequence-based reagent	5' L-V $\lambda$ 1	This paper; Ref. 90	PCR primers	GGTCCTGG GCCCAGTCT GTGCTG
sequence-based reagent	5' L-V $\lambda$ 2	This paper; Ref. 90	PCR primers	GGTCCTGG GCCCAGTCT GCCCTG
sequence-based reagent	5' L-V $\lambda$ 3	This paper; Ref. 90	PCR primers	GCTCTGTGA CCTCCTATG AGCTG
sequence-based reagent	5' L-V $\lambda$ 4/5	This paper; Ref. 90	PCR primers	GGTCTCTCT CACAGCTTG TGCTG
sequence-based reagent	5' L-V $\lambda$ 6	This paper; Ref. 90	PCR primers	GTTCTTGGG CCAATTTTAT GCTG
sequence-based reagent	5' L-V $\lambda$ 7	This paper; Ref. 90	PCR primers	GGTCCAATT CTCAGGCTG TGGTG
sequence-based reagent	5' L-V $\lambda$ 8	This paper; Ref. 90	PCR primers	GAGTGGATT CTCAGACTG TGGTG
sequence-based reagent	3' C $\gamma$ CH1 (IgG)	This paper; Ref. 90	PCR primers	GGAAGGTGT GCACGCCG CTGGTC

sequence-based reagent	3' C $\mu$ CH1 (IgM)	This paper; Ref. 90	PCR primers	GGGAATTCT CACAGGAGA CGA
sequence-based reagent	3'C $\alpha$ CH1 (IgA)	This paper; Ref. 90	PCR primers	TGGGAAGTT TCTGGCGGT CACG
sequence-based reagent	3' C $\kappa$ 543 (Kappa Light Chain)	This paper; Ref. 90	PCR primers	GTTTCTCGT AGTCTGCTT TGCTCA
sequence-based reagent	3' C $\lambda$ (Lambda Light Chain)	This paper; Ref. 90	PCR primers	CACCAGTGT GGCCTTGTT GGCTTG
commercial assay or kit	SV96 Total RNA Isolation Kit	Promega	Cat #Z3500	
commercial assay or kit	High-Capacity cDNA Reverse Transcription Kit	Thermo	Cat #4368814	
commercial assay or kit	Single Cell 3' Reagent Kit Protocol, v2 chemistry	10x Genomics	Cat #CG00052	
commercial assay or kit	iMag Negative Isolation Kit	BD Biosciences	Cat # 558007	CD19+ B cell isolation from PBMCs
software, algorithm	CellRanger	10x Genomics	v.2.0.0	
software, algorithm	Seurat (R package)	Refs. 88, 89	v.3.1.5	

540

541

542

543

544

## Experimental Methods

### PBMC isolation and transformation with EBV

Whole blood samples from two normal donors (777 and 461) were obtained from the Gulf Coast Regional Blood Center. PBMCs were isolated from each sample by Ficoll gradient (Sigma, # H8889). CD19<sup>+</sup> B cells were extracted from each PBMC sample through magnetic separation (BD iMag Negative Isolation Kit, BD, # 558007). Purified B cells were cultured in RPMI 1640 media supplemented with 15% fetal calf serum (FCS, vol./vol., Corning), 2 mM L-glutamine, penicillin (100 units/mL), streptomycin (100 µg/mL, Invitrogen), and cyclosporine A (0.5 µg/mL).

B95-8 and M81 strains of EBV were generated from the B95-8 Z-HT and M81 cell lines, respectively, as described previously.<sup>87</sup> Separate bulk infections of B cells were performed by incubating donor B cells with B95-8 Z-HT or M81 supernatants for 1 h at 37°C, 5% CO<sub>2</sub> to produce the following cultures: 777\_B95-8, 777\_M81, and 461\_B95-8. After virus incubation, cells were rinsed in 1x PBS and resuspended in R15 media. LCL outgrowth was achieved from each of these three samples, resulting in LCL\_777\_B95-8, LCL\_777\_M81, and LCL\_461\_B95-8.

### Cell lines and culture

LCL 777\_B95-8, 777\_M81 and 461\_B95-8 were generated in our laboratory by infection of primary human B cells obtained from the Gulf Coast Regional Blood Center with EBV strains B95-8 and M81. These lines were confirmed to be mycoplasma negative using the Sigma Lookout PCR kit. All three in-house LCL samples were cultured in supplemented RPMI media as described above, substituting 10% FCS instead of 15% FCS. Prior to single-cell sample preparation, LCL\_777\_B95-8 and LCL\_777\_M81 were maintained in culture for approximately one month,



whereas LCL\_461\_B95-8 was cultured for longer than six months. Immediately prior to single-cell sample preparation, LCLs were resuspended and disaggregated.

#### LCL samples and data

LCL\_777\_B95-8, LCL\_777\_M81, and LCL\_461\_B95-8 were created as described above. LCLs GM\_12878 and GM\_18502 were obtained, prepared, sequenced, and aligned as described by Osorio and colleagues.<sup>37</sup> Briefly, these samples were obtained from the Coriell Institute for Medical Research, cultured for several days, then prepared as single-cell GEMs (Gel bead in Emulsions) with the 10x Genomics Chromium system using version 2 chemistry for total RNA. Single-cell sequencing libraries were generated using established 10x Genomics protocols, and sequencing was performed with a Novaseq 6000 (Illumina, San Diego). Unique Molecular Identifier (UMI) count matrices were generated from these samples by using CellRanger v.2.1.0 with alignment to the hg38 version of the human reference genome. Additional information about the experimental handling and acquisition of data for GM12878 and GM18502 is provided in the original reference.<sup>37</sup> Gene-barcode matrix files for each sample were downloaded from the Gene Expression Omnibus (accession ID: GSE126321) and subsequently analyzed along with data from LCL\_777\_B95-8, LCL\_777\_M81, and LCL\_461\_B95-8 samples, while the LCL\_461\_B95-8 sample was run in a separate experimental batch.

#### Single-cell RNA sample preparation, and sequencing

Single-cell RNA samples for LCL\_777\_B95-8, LCL\_777\_M81, and LCL\_461\_B95-8 were prepared using the General Sample Preparation demonstrated protocol from 10x Genomics (10x, Manual Part #CG00053) adapted from the original published methods.<sup>49</sup> Briefly, disaggregated LCLs were resuspended in fresh 1x PBS supplemented with 0.04% BSA, stained

with trypan blue to assess viability, and counted using a hemocytometer for preparation to target concentration.

Single-cell libraries for sequencing were prepared from each sample using the methods described in the 10x Genomics Single Cell 3' Reagent Kit Protocol (v2 chemistry, Manual Part #CG00052). In brief, GEMs were prepared using the 10x Chromium Controller, after which cDNA synthesis and feature barcoding were performed and sequencing libraries for each sample were constructed. Sequencing runs were performed on an Illumina HiSeq 3000/4000 (Illumina, San Diego). Samples for LCL\_777\_B95-8 and LCL\_777\_M81 were sequenced in a pooled run in a single HiSeq lane.

Raw base call files (\*.bcl.gz) from sequencing runs were processed using CellRanger v.2.0.0 to generate fastq files (\*.fastq.gz) via CellRanger's 'mkfastq' command. CellRanger's 'count' command was then used to align reads from the three in-house LCL samples to the human reference genome (hg38) with the Type 1 EBV reference genome (NC\_007605) concatenated as an extra chromosome (reflecting the episomal nature of the EBV genome within infected B cells). This process yielded gene-barcode matrices (UMI count matrices) for subsequent analysis.

#### Sample QC, analysis, and visualization

UMI count matrices for all five LCL samples were analyzed using the Seurat single-cell analysis package for R (Seurat v.3.1.5).<sup>88,89</sup> Filtered barcode matrices were loaded into Seurat, after which genes present in fewer than three cells and cells expressing fewer than 200 unique RNA molecules (features) and more than 65000 unique features were filtered out. Additionally, cells in which mitochondrial genes accounted for greater than 5% of all transcripts were excluded from analysis. Beyond the uniform application of QC steps, we did not investigate the potential for batch-specific effects across the five samples run in four experiments. After QC thresholding, feature data were normalized and scored for cell cycle markers. Cell cycle scoring

was used to regress out S and G2M gene features to remove variance (and unwanted effects on clustering) in the datasets arising from cell cycle phase. Cell cycle-corrected data were then scaled, and selection was performed to find the highest-variance features. Principal Component Analysis (PCA) was performed on selected (n = 2000) variable features, and PCs were subsequently used to define distinct subpopulations within each of the five samples. For visualization, PCs were used to generate clusters at various resolutions and dimensionally reduced using t-distributed Stochastic Neighbor Embedding (tSNE). The R code used to process data and produce figures presented in this manuscript is provided as a supporting file (**Source Code File 1**), and the Python code used for simulations is provided as a supporting file (**Source Code File 2**) and is also available on GitHub (<https://github.com/esorelle/ig-evo-sim>).

#### PCR validation experiments

Cell pellets were collected for each of the five LCLs, and total mRNA was extracted from each pellet using the Promega SV96 Total RNA Isolation Kit (Promega, cat # Z3500) and quantified using a NanoDrop 2000 spectrophotometer (Thermo). Total mRNA was then used to create cDNA pools for each sample using a High-Capacity cDNA Reverse Transcription Kit (Thermo, cat # 4368814). Previously reported primer sequences flanking each heavy (IgM, IgA, IgG) and light chain (Ig kappa, Ig lambda) gene of interest<sup>90</sup> (listed below) were purchased from Integrated DNA Technologies (IDT) and used to amplify each cDNA pool using standard procedures across a temperature gradient. PCR products and loading dye (Purple (6x), NEB, cat # B7025) were run on 2% agarose gels with SYBR Safe at 120 V for 45 min with a 100 base pair ladder (NEB, N3231S) and subsequently visualized using a LI-COR Odyssey Fc Imaging System (LI-COR Biosciences). For LCL\_777\_B95-8 and GM12878, PCR products were sequenced (GeneWiz) and aligned to assess clonality ([imgt.org](http://imgt.org)).

#### ICAM-1 cell sorting, proliferation, and metabolic assays

LCLs were stained with CD54 (ICAM-1) antibody (PE, Biolegend #HA58) according to the supplier's manual. Then, cells were sorted on a Beckman Coulter Astrios cell sorter by anti-CD54 fluorescence, with ICAM-1-high and ICAM-1-low being defined as the top 15% and bottom 15%, respectively. 24 hours after sorting of ICAM-1-high and ICAM-1-low LCLs, extracellular acidification rate (ECAR) and oxygen consumption rate (OCR) were measured using the Seahorse XF24 extracellular flux analyzer (Agilent Technologies) Cell Energy Phenotype Test. Suspension LCLs were attached to culture plates by using Cell-Tak (BD Bioscience). ECAR and OCR were measured in Seahorse XF Base Medium supplemented with 1 mM pyruvate, 2 mM glutamine, and 10 mM glucose (Sigma Aldrich). ECAR and OCR values were normalized to cell number. For stress measurements, ECAR and OCR were measured over time after injection of oligomycin and FCCP. Metabolic potential measures the ability of cells to meet energetic demands under conditions of stress and is the percentage increase of stressed over baseline ECAR or OCR.

#### Stochastic simulations

The concept of a discrete-time Markov chain was adapted to simulate the evolution of phenotype frequencies, using immunoglobulin heavy chain isotype distributions within LCLs as an example. Briefly, the simulation takes as input a cell population of size  $n$  comprising B cells of different Ig heavy chain isotype classes at user-defined initial frequencies, fixed probabilities of proliferation in synchronous rounds of cell division, and a constant cell death rate assumption (also user-defined). Within the scope of computational feasibility, users can specify the number of rounds of cell division to simulate and the number of simulation trials to run. Additionally, users may choose to generate simulated cluster data modeled from distinct 2D normal distributions for each isotype for a specified number of trials at fixed intervals (i.e., every  $n^{\text{th}}$  cell division round). The simulation was implemented in Python, and the code used to generate the

672 simulated data is provided as a supporting file. The code is also available at (add as public  
673 GitHub repo) and may be freely implemented and modified.

## **Source Data Files**

Raw sequencing data for the three previously unpublished samples (LCL\_777\_B958, LCL\_777\_M81, and LCL\_461\_B958) are deposited in the NCBI Sequence Read Archive (SRA) and can be accessed along with processed data from the NCBI Gene Expression Omnibus (GEO, Series Accession: GSE158275).

## **Source Code Files and Legends**

**Source Code File 1.** R code used for UMI count matrix processing, analysis, and figure generation.

**Source Code File 2.** Python code used for clonal evolution simulations (also available on github at <https://github.com/esorelle/ig-evo-sim>).

## 692 References

- 693 1 Bird, A. G. M., S.M.; Britton, S. Cyclosporin A promotes spontaneous outgrowth in vitro  
694 of Epstein-Barr virus-induced B-cell lines. *Nature* **289**, 300-301 (1981).
- 695 2 Anderson, M. A. G., J.F. Use of Cyclosporin A in Establishing Epstein-Barr Virus-  
696 Transformed Human Lymphoblastoid Cell Lines. *In Vitro* **20**, 856-858 (1984).
- 697 3 Nichele, I. *et al.* VR09 cell line: an EBV-positive lymphoblastoid cell line with in vivo  
698 characteristics of diffuse large B cell lymphoma of activated B-cell type. *PLoS One* **7**,  
699 e52811, doi:10.1371/journal.pone.0052811 (2012).
- 700 4 Tazzari, P. L. D. T., D.; Bolognesi, A.; Testoni, N.; Pileri, S.; Roncella, S.; Reato, G.  
701 Stein, H.; Gobbi, M.; Stirpe, F. An Epstein-Barr virus-infected lymphoblastoid cell line  
702 (D430B) that grows in SCID-mice with the morphologic features of a CD30+ anaplastic  
703 large cell lymphoma, and is sensitive to anti-CD30 immunotoxins. *Haematologica* **84**,  
704 988-995 (1999).
- 705 5 Markasz, L. *et al.* NK cell-mediated lysis is essential to kill Epstein-Barr virus  
706 transformed lymphoblastoid B cells when using rituximab. *Biomed Pharmacother* **63**,  
707 413-420, doi:10.1016/j.biopha.2008.08.009 (2009).
- 708 6 Rea, D. F., C.; Leblond, V.; Rowe, M.; Joab, I.; Edelman, L.; Bitker, M.O.; Gandjbakhch,  
709 I.; Suberbielle, C.; Farcet, J.P.; Raphael, M. Patterns of Epstein-Barr Virus Latent and  
710 Replicative Gene Expression in Epstein-Barr Virus B Cell Lymphoproliferative Disorders  
711 After Organ Transplantation. *Transplantation* **58**, 317-324 (1994).
- 712 7 Caliskan, M., Pritchard, J. K., Ober, C. & Gilad, Y. The effect of freeze-thaw cycles on  
713 gene expression levels in lymphoblastoid cell lines. *PLoS One* **9**, e107166,  
714 doi:10.1371/journal.pone.0107166 (2014).
- 715 8 Choy, E. *et al.* Genetic analysis of human traits in vitro: drug response and gene  
716 expression in lymphoblastoid cell lines. *PLoS Genet* **4**, e1000287,  
717 doi:10.1371/journal.pgen.1000287 (2008).
- 718 9 Oh, J. H. *et al.* Genotype instability during long-term subculture of lymphoblastoid cell  
719 lines. *J Hum Genet* **58**, 16-20, doi:10.1038/jhg.2012.123 (2013).
- 720 10 Stark, A. L. *et al.* Heritable and non-genetic factors as variables of pharmacologic  
721 phenotypes in lymphoblastoid cell lines. *Pharmacogenomics J* **10**, 505-512,  
722 doi:10.1038/tpj.2010.3 (2010).
- 723 11 Volkova, E. *et al.* Validated Reference Panel from Renewable Source of Genomic DNA  
724 Available for Standardization of Blood Group Genotyping. *J Mol Diagn* **21**, 525-537,  
725 doi:10.1016/j.jmoldx.2019.02.003 (2019).
- 726 12 Rickinson, A. & Kieff, E. Epstein-Barr virus, p 2655–2700. *Fields virology* **2** (2007).
- 727 13 Lindahl, T. *et al.* Covalently closed circular duplex DNA of Epstein-Barr virus in a human  
728 lymphoid cell line. *Journal of molecular biology* **102**, 511-530 (1976).
- 729 14 Nonoyama, M. & Pagano, J. S. Separation of Epstein-Barr virus DNA from large  
730 chromosomal DNA in non-virus-producing cells. *Nature New Biology* **238**, 169-171  
731 (1972).
- 732 15 Longnecker, R. M., Kieff, E. & Cohen, J. I. in *Fields Virology: Sixth Edition* (Wolters  
733 Kluwer Health Adis (ESP), 2013).
- 734 16 Price, A. M. & Luftig, M. A. To be or not IIb: a multi-step process for Epstein-Barr virus  
735 latency establishment and consequences for B cell tumorigenesis. *PLoS Pathog* **11**,  
736 e1004656, doi:10.1371/journal.ppat.1004656 (2015).
- 737 17 Hung, S. C., Kang, M. S. & Kieff, E. Maintenance of Epstein-Barr virus (EBV) oriP-based  
738 episomes requires EBV-encoded nuclear antigen-1 chromosome-binding domains,  
739 which can be replaced by high-mobility group-I or histone H1. *Proc Natl Acad Sci U S A*  
740 **98**, 1865-1870, doi:10.1073/pnas.031584698 (2001).

- 18 Bhende, P. M., Seaman, W. T., Delecluse, H. J. & Kenney, S. C. The EBV lytic switch protein, Z, preferentially binds to and activates the methylated viral genome. *Nat Genet* **36**, 1099-1104, doi:10.1038/ng1424 (2004).
- 19 Woisetschlaeger, M., Strominger, J. L. & Speck, S. H. Mutually exclusive use of viral promoters in Epstein-Barr virus latently infected lymphocytes. *Proceedings of the National Academy of Sciences* **86**, 6498-6502 (1989).
- 20 Alfieri, C., Birkenbach, M. & Kieff, E. Early events in Epstein-Barr virus infection of human B lymphocytes. *Virology* **181**, 595-608 (1991).
- 21 Nikitin, P. A. *et al.* An ATM/Chk2-mediated DNA damage-responsive signaling pathway suppresses Epstein-Barr virus transformation of primary human B cells. *Cell host & microbe* **8**, 510-522 (2010).
- 22 Nikitin, P. A., Price, A. M., McFadden, K., Yan, C. M. & Luftig, M. A. Mitogen-induced B-cell proliferation activates Chk2-dependent G1/S cell cycle arrest. *PLoS One* **9**, e87299 (2014).
- 23 Young, L. S. & Rickinson, A. B. Epstein-Barr virus: 40 years on. *Nat Rev Cancer* **4**, 757-768, doi:10.1038/nrc1452 (2004).
- 24 Mosialos, G. *et al.* The Epstein-Barr virus transforming protein LMP1 engages signaling proteins for the tumor necrosis factor receptor family. *Cell* **80**, 389-399 (1995).
- 25 Devergne, O. *et al.* Association of TRAF1, TRAF2, and TRAF3 with an Epstein-Barr virus LMP1 domain important for B-lymphocyte transformation: role in NF-kappaB activation. *Molecular and cellular biology* **16**, 7098-7108 (1996).
- 26 Cahir-McFarland, E. D., Davidson, D. M., Schauer, S. L., Duong, J. & Kieff, E. NF-kB inhibition causes spontaneous apoptosis in Epstein-Barr virus-transformed lymphoblastoid cells. *Proceedings of the National Academy of Sciences* **97**, 6055-6060 (2000).
- 27 Mrozek-Gorska, P. *et al.* Epstein-Barr virus reprograms human B lymphocytes immediately in the prelatent phase of infection. *Proc Natl Acad Sci U S A* **116**, 16046-16055, doi:10.1073/pnas.1901314116 (2019).
- 28 Morbach, H., Eichhorn, E. M., Liese, J. G. & Girschick, H. J. Reference values for B cell subpopulations from infancy to adulthood. *Clin Exp Immunol* **162**, 271-279, doi:10.1111/j.1365-2249.2010.04206.x (2010).
- 29 Perez-Andres, M. *et al.* Human peripheral blood B-cell compartments: a crossroad in B-cell traffic. *Cytometry B Clin Cytom* **78 Suppl 1**, S47-60, doi:10.1002/cyto.b.20547 (2010).
- 30 Messinger, J. E., Dai, J., Stanland, L. J., Price, A. M. & Luftig, M. A. Identification of Host Biomarkers of Epstein-Barr Virus Latency IIb and Latency III. *mBio* **10**, doi:10.1128/mBio.01006-19 (2019).
- 31 Brooks, J. M. *et al.* Cyclical expression of EBV latent membrane protein 1 in EBV-transformed B cells underpins heterogeneity of epitope presentation and CD8+ T cell recognition. *J Immunol* **182**, 1919-1928, doi:10.4049/jimmunol.0713607 (2009).
- 32 Lam, N., Sandberg, M. L. & Sugden, B. High physiological levels of LMP1 result in phosphorylation of eIF2 alpha in Epstein-Barr virus-infected cells. *J Virol* **78**, 1657-1664, doi:10.1128/jvi.78.4.1657-1664.2004 (2004).
- 33 Lee, D. Y. & Sugden, B. The LMP1 oncogene of EBV activates PERK and the unfolded protein response to drive its own synthesis. *Blood* **111**, 2280-2289, doi:10.1182/blood-2007-07-100032 (2008).
- 34 Miller, G. & Lipman, M. Release of infectious Epstein-Barr virus by transformed marmoset leukocytes. *Proceedings of the National Academy of Sciences* **70**, 190-194 (1973).



- 35 Desgranges, C. *et al.* In vitro transforming activity of EBV. I-Establishment and properties of two EBV strains (M81 and M72) produced by immortalized Callithrix jacchus lymphocytes. *Biomedicine/[publiee pour l'AAICIG]* **25**, 349 (1976).
- 36 Tsai, M.-H. *et al.* Spontaneous lytic replication and epitheliotropism define an Epstein-Barr virus strain found in carcinomas. *Cell reports* **5**, 458-470 (2013).
- 37 Osorio, D., Yu, X., Yu, P., Serpedin, E. & Cai, J. J. Single-cell RNA sequencing of a European and an African lymphoblastoid cell line. *Sci Data* **6**, 112, doi:10.1038/s41597-019-0116-4 (2019).
- 38 He, J. S. *et al.* IgG1 memory B cells keep the memory of IgE responses. *Nat Commun* **8**, 641, doi:10.1038/s41467-017-00723-0 (2017).
- 39 Saunders, S. P., Ma, E. G. M., Aranda, C. J. & Curotto de Lafaille, M. A. Non-classical B Cell Memory of Allergic IgE Responses. *Front Immunol* **10**, 715, doi:10.3389/fimmu.2019.00715 (2019).
- 40 Bhende, P. M., Dickerson, S. J., Sun, X., Feng, W. H. & Kenney, S. C. X-box-binding protein 1 activates lytic Epstein-Barr virus gene expression in combination with protein kinase D. *J Virol* **81**, 7363-7370, doi:10.1128/JVI.00154-07 (2007).
- 41 Hatzoglou, A. *et al.* TNF receptor family member BCMA (B cell maturation) associates with TNF receptor-associated factor (TRAF) 1, TRAF2, and TRAF3 and activates NF- $\kappa$ B, elk-1, c-Jun N-terminal kinase, and p38 mitogen-activated protein kinase. *The Journal of Immunology* **165**, 1322-1330 (2000).
- 42 Rosenbaum, M. *et al.* MZB1 is a GRP94 cochaperone that enables proper immunoglobulin heavy chain biosynthesis upon ER stress. *Genes Dev* **28**, 1165-1178, doi:10.1101/gad.240762.114 (2014).
- 43 Nutt, S. L., Hodgkin, P. D., Tarlinton, D. M. & Corcoran, L. M. The generation of antibody-secreting plasma cells. *Nat Rev Immunol* **15**, 160-171, doi:10.1038/nri3795 (2015).
- 44 Spender, L. C., Cornish, G. H., Sullivan, A. & Farrell, P. J. Expression of transcription factor AML-2 (RUNX3, CBF(alpha)-3) is induced by Epstein-Barr virus EBNA-2 and correlates with the B-cell activation phenotype. *J Virol* **76**, 4919-4927, doi:10.1128/jvi.76.10.4919-4927.2002 (2002).
- 45 Jochner, N. E., D.; Zimmer-Strobl, U.; Pawlita, M.; Bornkamm, G.W.; Kempkes, B. Epstein-Barr virus nuclear antigen 2 is a transcriptional suppressor of the immunoglobulin mu gene: implications for the expression of the translocated c-myc gene in Burkitt's lymphoma cells. *EMBO* **15**, 375-382 (1996).
- 46 Harth-Hertle, M. L. *et al.* Inactivation of intergenic enhancers by EBNA3A initiates and maintains polycomb signatures across a chromatin domain encoding CXCL10 and CXCL9. *PLoS Pathog* **9**, e1003638, doi:10.1371/journal.ppat.1003638 (2013).
- 47 McClellan, M. J. *et al.* Modulation of enhancer looping and differential gene targeting by Epstein-Barr virus transcription factors directs cellular reprogramming. *PLoS Pathog* **9**, e1003636, doi:10.1371/journal.ppat.1003636 (2013).
- 48 Paschos, K. *et al.* Epstein-barr virus latency in B cells leads to epigenetic repression and CpG methylation of the tumour suppressor gene Bim. *PLoS Pathog* **5**, e1000492, doi:10.1371/journal.ppat.1000492 (2009).
- 49 Zheng, G. X. *et al.* Massively parallel digital transcriptional profiling of single cells. *Nature communications* **8**, 1-12 (2017).
- 50 Xing, L. & Kieff, E. Epstein-Barr virus BHRF1 micro- and stable RNAs during latency III and after induction of replication. *J Virol* **81**, 9967-9975, doi:10.1128/JVI.02244-06 (2007).
- 51 Chiu, Y.-F. & Sugden, B. Epstein-Barr Virus: The Path from Latent to Productive Infection. *Annual Review of Virology* **3**, 359-372, doi:10.1146/annurev-virology-110615-042358 (2016).

841 52 Škulj, D. in *Soft Methods for Integrated Uncertainty Modelling* 299-306 (Springer,  
842 2006).

843 53 Ewens, W. J. *Mathematical population genetics 1: theoretical introduction*. Vol. 27  
844 (Springer Science & Business Media, 2012).

845 54 Nowak, M. A. *Evolutionary dynamics: exploring the equations of life*. (Harvard university  
846 press, 2006).

847 55 Ryan, J. L. *et al.* Clonal evolution of lymphoblastoid cell lines. *Lab Invest* **86**, 1193-1200,  
848 doi:10.1038/labinvest.3700472 (2006).

849 56 Miyawaki, T., Butler, J. L., Radbruch, A., Gartland, G. L. & Cooper, M. D. Isotype  
850 commitment of human B cells that are transformed by Epstein-Barr virus. *European*  
851 *journal of immunology* **21**, 215-220 (1991).

852 57 Hughes, P., Marshall, D., Reid, Y., Parkes, H. & Gelber, C. The costs of using  
853 unauthenticated, over-passaged cell lines: how much more data do we need?  
854 *Biotechniques* **43**, 575-586 (2007).

855 58 Briske-Anderson, M. J., Finley, J. W. & Newman, S. M. The influence of culture time and  
856 passage number on the morphological and physiological development of Caco-2 cells.  
857 *Proceedings of the society for experimental biology and medicine* **214**, 248-257 (1997).

858 59 O'Driscoll, L. *et al.* Phenotypic and global gene expression profile changes between low  
859 passage and high passage MIN-6 cells. *Journal of endocrinology* **191**, 665-676 (2006).

860 60 Anders, S. & Huber, W. Differential expression analysis for sequence count data. *Nature*  
861 *Precedings*, 1-1 (2010).

862 61 Morley, M. M., C.M.; Weber, T.M.; Devlin, J.L.; Ewens, K.G.; Spielman, R.S.; Cheung,  
863 V.G. Genetic analysis of genome-wide variation in human gene expression. *Nature* **430**,  
864 743-747 (2004).

865 62 Kaye, K. M. I., K.M.; Kieff, E. Epstein\_Barr virus latent membrane protein 1 is essential  
866 for B-lymphocyte growth transformation. *PNAS* **90**, 9150-9154 (1993).

867 63 Dirmeier, U. N., B.; Kilger, E.; Reisbach, G.; Sandberg, M.L.; Hammerschmidt, W. Latent  
868 Membrane Protein 1 Is Critical for Efficient Growth Transformation of Human B Cells by  
869 Epstein-Barr Virus. *Cancer Research* **63**, 2982-2989 (2003).

870 64 Raj, A., Peskin, C. S., Tranchina, D., Vargas, D. Y. & Tyagi, S. Stochastic mRNA  
871 synthesis in mammalian cells. *PLoS Biol* **4**, e309 (2006).

872 65 Raj, A. & Van Oudenaarden, A. Nature, nurture, or chance: stochastic gene expression  
873 and its consequences. *Cell* **135**, 216-226 (2008).

874 66 Weinberger, L. S., Burnett, J. C., Toettcher, J. E., Arkin, A. P. & Schaffer, D. V.  
875 Stochastic gene expression in a lentiviral positive-feedback loop: HIV-1 Tat fluctuations  
876 drive phenotypic diversity. *Cell* **122**, 169-182 (2005).

877 67 Behar, M. & Hoffmann, A. Understanding the temporal codes of intra-cellular signals.  
878 *Curr Opin Genet Dev* **20**, 684-693, doi:10.1016/j.gde.2010.09.007 (2010).

879 68 O'Dea, E. L. *et al.* A homeostatic model of IkappaB metabolism to control constitutive  
880 NF-kappaB activity. *Mol Syst Biol* **3**, 111, doi:10.1038/msb4100148 (2007).

881 69 Sun, C. C. & Thorley-Lawson, D. A. Plasma cell-specific transcription factor XBP-1s  
882 binds to and transactivates the Epstein-Barr virus BZLF1 promoter. *J Virol* **81**, 13566-  
883 13577, doi:10.1128/JVI.01055-07 (2007).

884 70 Laichalk, L. L. & Thorley-Lawson, D. A. Terminal differentiation into plasma cells initiates  
885 the replicative cycle of Epstein-Barr virus in vivo. *J Virol* **79**, 1296-1307,  
886 doi:10.1128/JVI.79.2.1296-1307.2005 (2005).

887 71 Styles, C. T. *et al.* EBV epigenetically suppresses the B cell-to-plasma cell differentiation  
888 pathway while establishing long-term latency. *PLoS Biol* **15**, e2001992,  
889 doi:10.1371/journal.pbio.2001992 (2017).

890 72 Peng, S. L. G., A.J.; Ranger, A.M.; Glimcher, L.H. NFATc1 and NFATc2 Together  
891 Control Both T and B Cell Activation and Differentiation. *Immunity* **14**, 13-20 (2001).

- 73 Tsitsikov, E. N. *et al.* TRAF1 is a negative regulator of TNF signaling: enhanced TNF signaling in TRAF1-deficient mice. *Immunity* **15**, 647-657 (2001).
- 74 Frey, T. R. *et al.* Nascent Transcriptomics Reveal Cellular Prolytic Factors Upregulated Upstream of the Latent-to-Lytic Switch Protein of Epstein-Barr Virus. *Journal of Virology* **94** (2020).
- 75 Romero-Masters, J. C. *et al.* B cells infected with Type 2 Epstein-Barr virus (EBV) have increased NFATc1/NFATc2 activity and enhanced lytic gene expression in comparison to Type 1 EBV infection. *PLoS Pathog* **16**, e1008365, doi:10.1371/journal.ppat.1008365 (2020).
- 76 Ozsolak, F. & Milos, P. M. RNA sequencing: advances, challenges and opportunities. *Nat Rev Genet* **12**, 87-98, doi:10.1038/nrg2934 (2011).
- 77 Kohler, G. Immunoglobulin chain loss in hybridoma lines. *PNAS* **77**, 2197-2199 (1980).
- 78 Haas, I. G. W., M.R. Immunoglobulin heavy chain toxicity in plasma cells is neutralized by fusion to pre-B cells. *PNAS* **81**, 7185-7188 (1984).
- 79 Fernando, M. R., NANRI, H., YOSHITAKE, S., NAGATA-KUNO, K. & MINAKAMI, S. Thioredoxin regenerates proteins inactivated by oxidative stress in endothelial cells. *European Journal of Biochemistry* **209**, 917-922 (1992).
- 80 Lu, J. & Holmgren, A. The thioredoxin antioxidant system. *Free Radical Biology and Medicine* **66**, 75-87 (2014).
- 81 Muri, J. *et al.* The thioredoxin-1 system is essential for fueling DNA synthesis during T-cell metabolic reprogramming and proliferation. *Nat Commun* **9**, 1851, doi:10.1038/s41467-018-04274-w (2018).
- 82 Muri, J., Thut, H., Feng, Q. & Kopf, M. Thioredoxin-1 distinctly promotes NF-kappaB target DNA binding and NLRP3 inflammasome activation independently of Txnip. *Elife* **9**, doi:10.7554/eLife.53627 (2020).
- 83 Schwering, I. *et al.* Loss of the B-lineage-specific gene expression program in Hodgkin and Reed-Sternberg cells of Hodgkin lymphoma. *Blood, The Journal of the American Society of Hematology* **101**, 1505-1512 (2003).
- 84 Shaffer, S. M. *et al.* Memory Sequencing Reveals Heritable Single-Cell Gene Expression Programs Associated with Distinct Cellular Behaviors. *Cell* **182**, 947-959 e917, doi:10.1016/j.cell.2020.07.003 (2020).
- 85 Ozgyin, L., Horvath, A., Hevessy, Z. & Balint, B. L. Extensive epigenetic and transcriptomic variability between genetically identical human B-lymphoblastoid cells with implications in pharmacogenomics research. *Sci Rep* **9**, 4889, doi:10.1038/s41598-019-40897-9 (2019).
- 86 Price, A. M. *et al.* Epstein-Barr virus ensures B cell survival by uniquely modulating apoptosis at early and late times after infection. *Elife* **6**, doi:10.7554/eLife.22509 (2017).
- 87 Johannsen, E. *et al.* Proteins of purified Epstein-Barr virus. *Proceedings of the National Academy of Sciences* **101**, 16286-16291 (2004).
- 88 Satija, R., Farrell, J. A., Gennert, D., Schier, A. F. & Regev, A. Spatial reconstruction of single-cell gene expression data. *Nature biotechnology* **33**, 495-502 (2015).
- 89 Stuart, T. *et al.* Comprehensive integration of single-cell data. *Cell* **177**, 1888-1902. e1821 (2019).
- 90 Tiller, T. *et al.* Efficient generation of monoclonal antibodies from single human B cells by single cell RT-PCR and expression vector cloning. *J Immunol Methods* **329**, 112-124, doi:10.1016/j.jim.2007.09.017 (2008).

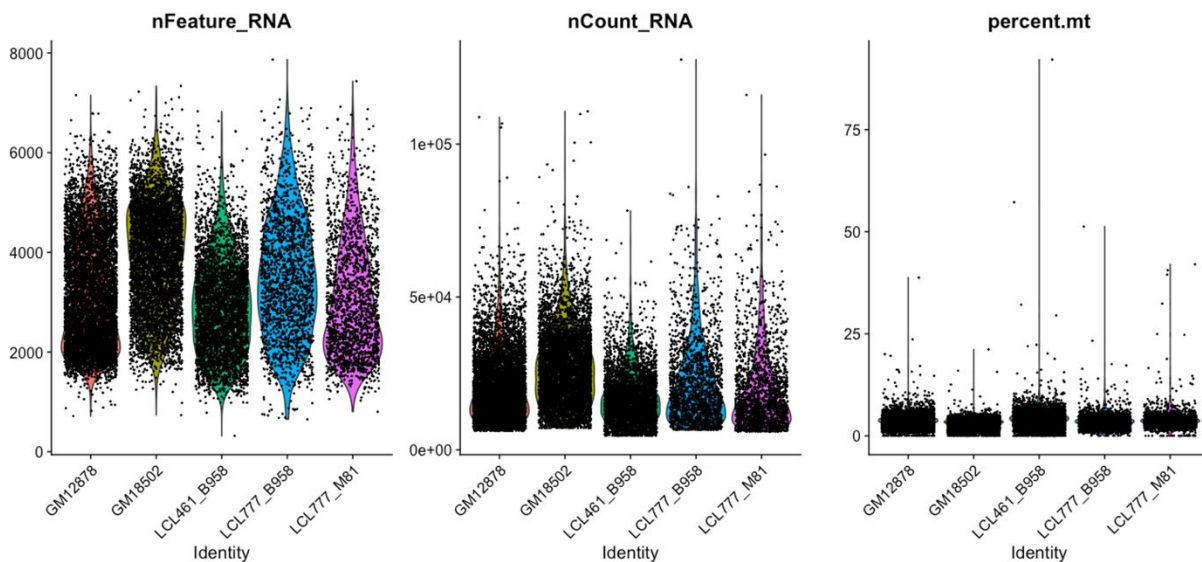
## Figure Supplements

Figure 1 – figure supplement 1  
Figure 1 – figure supplement 2  
Figure 1 – figure supplement 3  
Figure 1 – figure supplement 4  
Figure 1 – figure supplement 5  
Figure 1 – figure supplement 6  
Figure 1 – figure supplement 7  
Figure 1 – figure supplement 8  
Figure 1 – figure supplement 9  
Figure 1 – figure supplement 10  
Figure 1 – figure supplement 11  
Figure 1 – figure supplement 12  
Figure 1 – figure supplement 13  
Figure 1 – figure supplement 14  
Figure 1 – figure supplement 15  
Figure 1 – figure supplement 16

Figure 2 – figure supplement 1  
Figure 2 – figure supplement 2  
Figure 2 – figure supplement 3  
Figure 2 – figure supplement 4  
Figure 2 – figure supplement 5  
Figure 2 – figure supplement 6  
Figure 2 – figure supplement 7  
Figure 2 – figure supplement 8

Figure 3 – figure supplement 1

Figure 4 – figure supplement 1  
Figure 4 – figure supplement 2  
Figure 4 – figure supplement 3  
Figure 4 – figure supplement 4  
Figure 4 – figure supplement 5  
Figure 4 – figure supplement 6  
Figure 4 – figure supplement 7



**Figure 1 – figure supplement 1. Distributions of features used for QC across five LCL samples.**

	LCL_777_B95-8	LCL_777_M81	LCL_461_B95-8	GM12878	GM18502
Number of cells before QC	1906	1892	4120	7247	5530
Number of cells after QC	1643	1629	2849	6390	5408
Minimum number of cells containing gene	3	3	3	3	3
Minimum unique RNAs per cell	200	200	200	200	200
Maximum unique RNAs per cell	65000	65000	65000	65000	65000
Maximum percent mitochondrial gene expression	5%	5%	5%	5%	5%
Mean number of unique RNAs per cell (nFeature)	3439	2995	2856	3076	3884
Median number of unique RNAs per cell (nFeature)	3376	2747	2750	2824	3951
Mean number of total RNAs per cell (nCount)	21471	19326	17003	20098	27148
Median number of total RNAs per cell (nCount)	18063	15441	15535	17582	25914
Total unique RNAs (nFeature) in sample	16133	15973	16964	18170	17781

**Figure 1 – figure supplement 2. Summary of QC statistics across five LCL samples.** Cell lines were cultured in R10 media with 5% CO<sub>2</sub>, and all samples were prepared using the 10x Genomics Chromium Controller with v2 chemistry (see Methods).

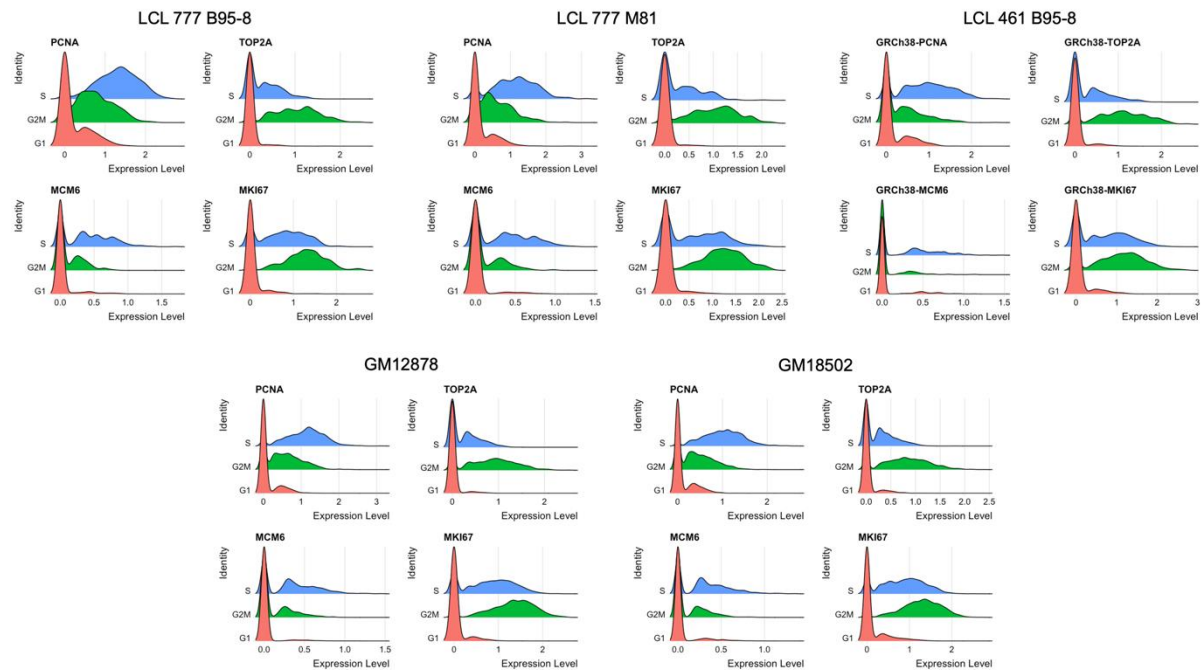


Figure 1 – figure supplement 3. Distributions of representative markers used for cell cycle scoring and regression.

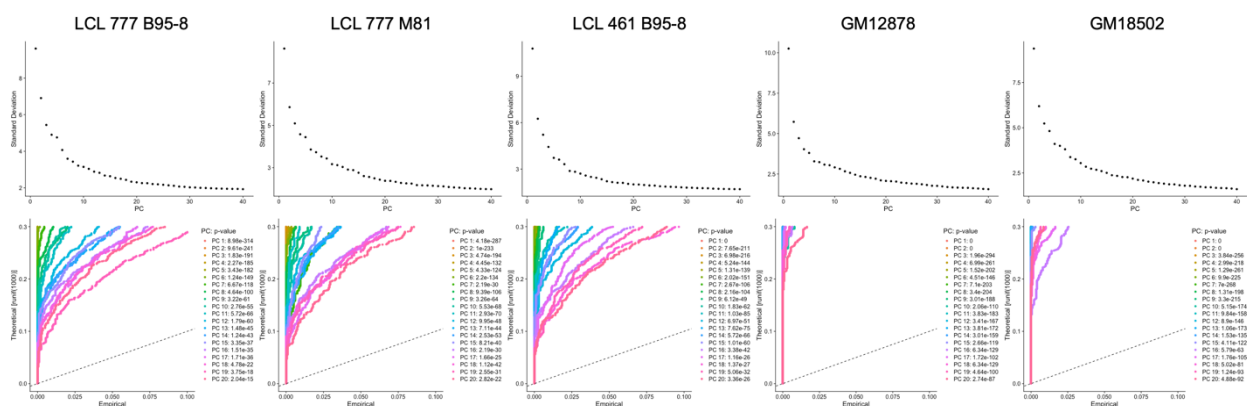
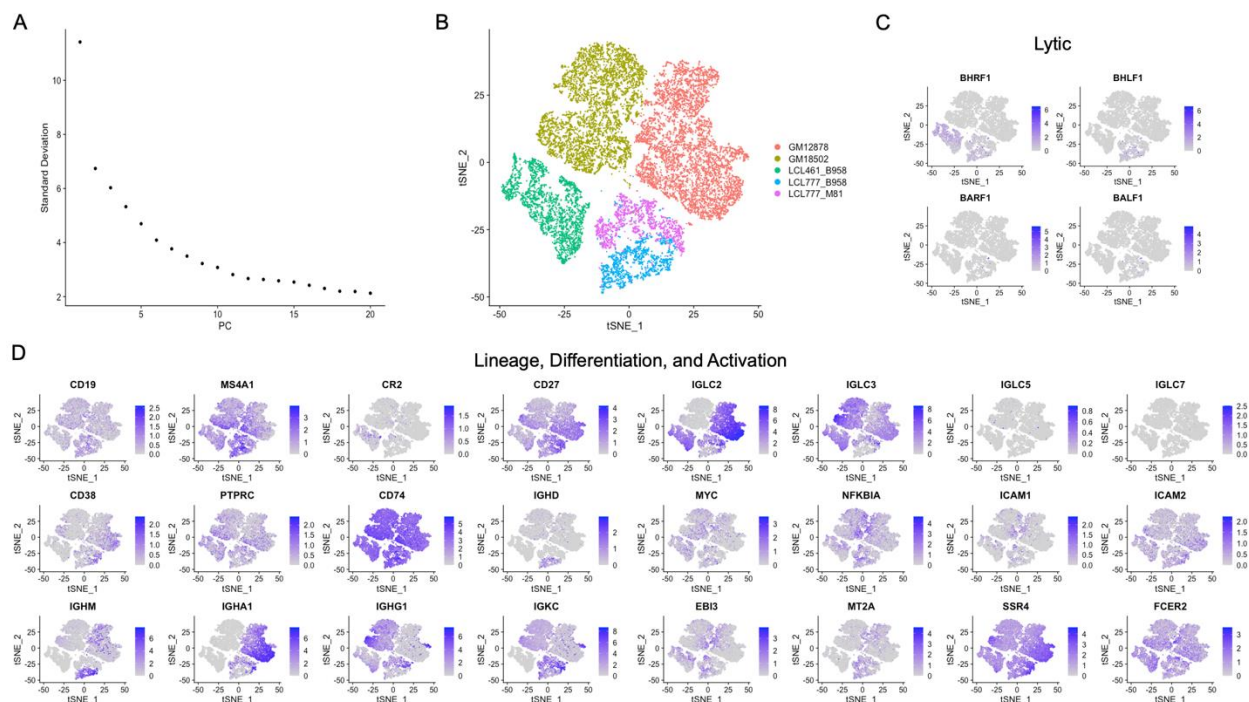


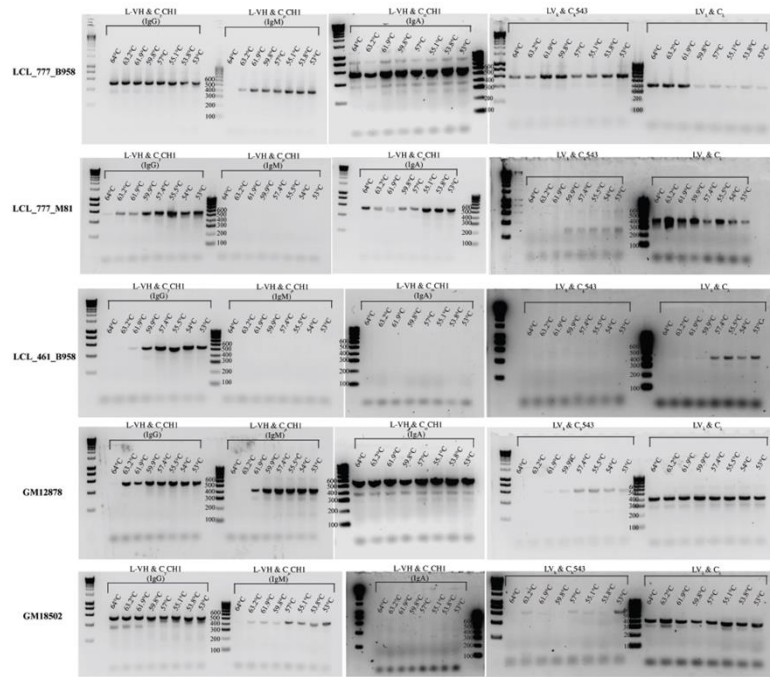
Figure 1 – figure supplement 4. Elbow and Jackstraw plots used for determination of principal components to use for dimensional reduction and clustering.



**Figure 1 – figure supplement 5. Merged sample analysis.** (A) Elbow plot showing variation captured by the first 20 principal components for the 5 LCL merged dataset. (B) tSNE plot of the merged dataset. Inter-donor diversity is the predominant source of variance within the merged dataset, as evidenced by low-resolution clustering. The two clusters corresponding to samples derived from the same donor (LCL 777) and infected with different viral strains exhibit proximity. (C, D) Expression of lytic genes and other genes of interest in the merged dataset. The merged dataset indicates hierarchical diversity across LCLs, with similar intra-donor patterns of expression manifesting in clusters distinguished by inter-donor heterogeneity.



A

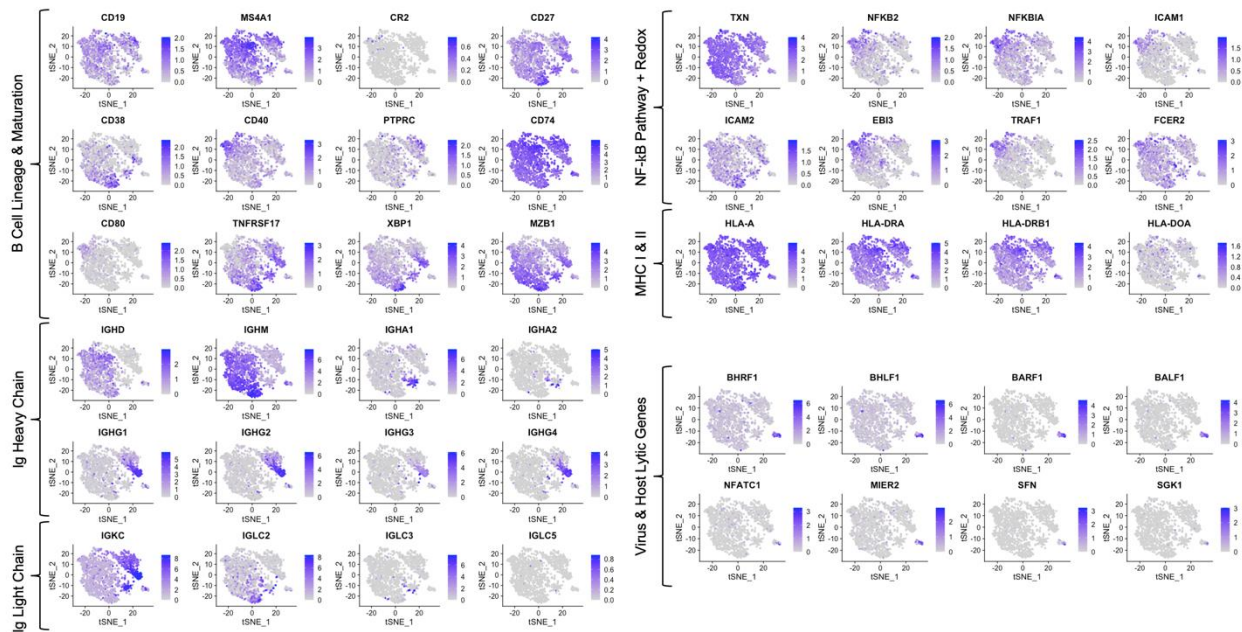


B

	GM12878		LCL_777_B958	
	Gene ID	Pct.	Gene ID	Pct.
IgG	IGHV1-8*01	94.44%	IGHV4-59*01	92.28%
	IGHD6-13*01	---	IGHD3-10*01	---
	IGHJ6*03	96.77%	IGHJ4*01	75.00%
IgA	IGHV3-21*01	95.14%	IGHV3-48*03	86.67%
	IGHD2-2*01	---	IGHD2-15*01	---
	IGHJ4*02	97.92%	IGHJ6*02	80.65%
IgM	IGHV3-23*04	91.32%	IGHV3-30*03	95.83%
	IGHD3-3*02	---	IGHD2-2*02	---
	IGHJ4*02	89.58%	IGHJ4*02	81.25%

**Figure 1 – figure supplement 6. Validation of Ig heavy and light chain (poly)clonality for five LCLs.** (A) Heavy and light chain isotype targeted PCR products in each of the five LCLs are consistent with the Ig composition captured by single-cell sequencing. (B) IMGT sequence alignment of two LCLs demonstrate that cells expressing a given heavy chain isotype are largely monoclonal.

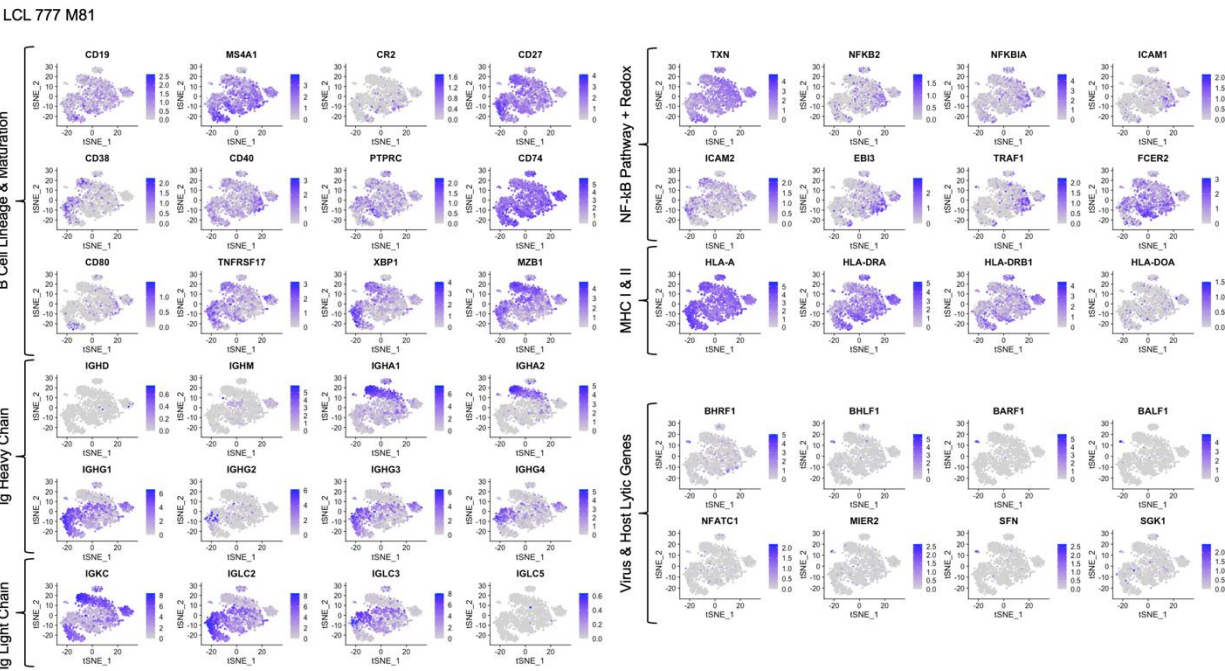
LCL 777 B95-8



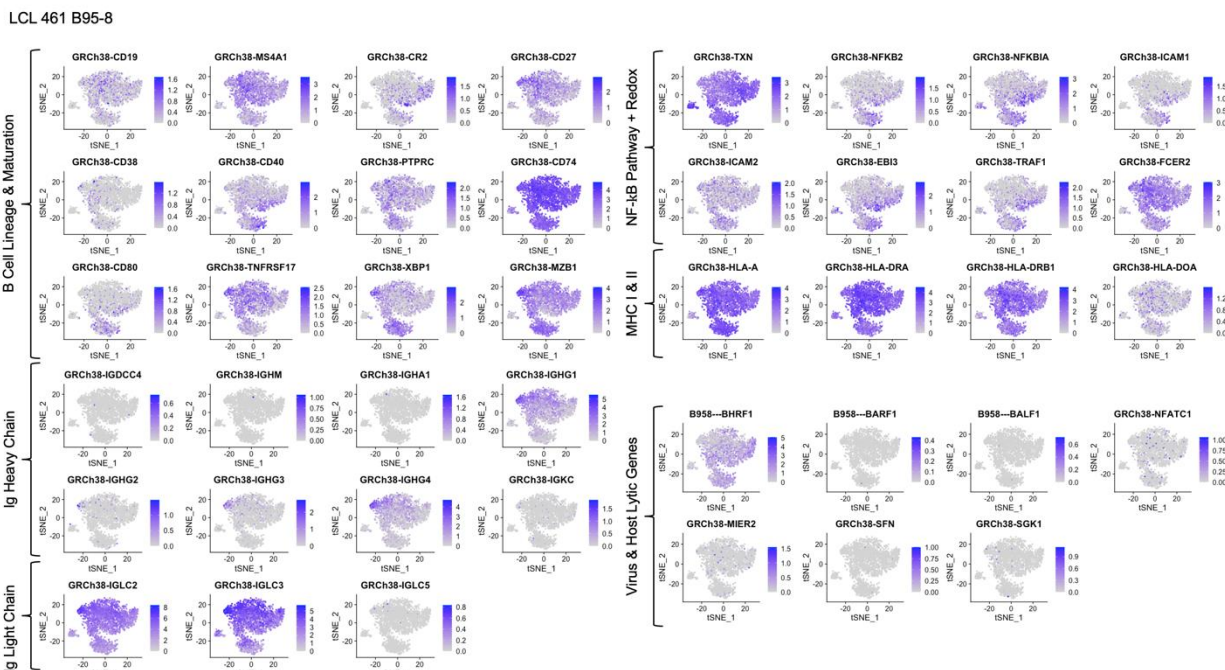
**Figure 1 – figure supplement 7. Expression of key genes groups in LCL 777 B95-8.**



1044

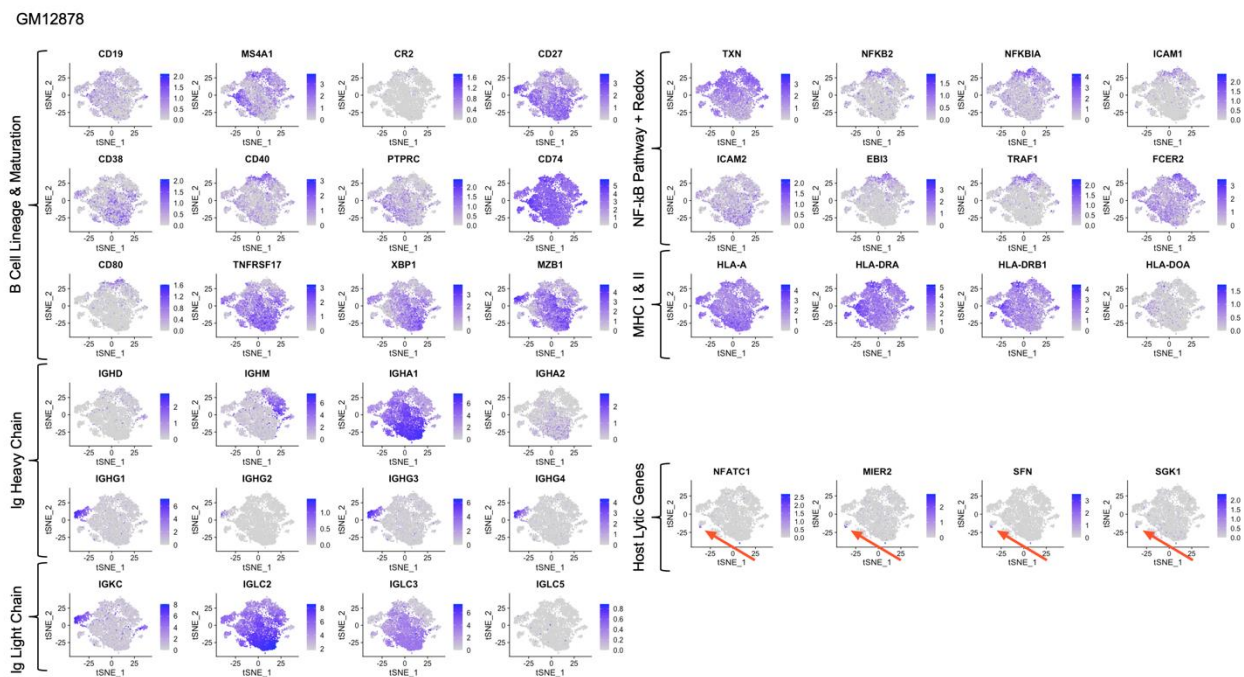


1045  
1046  
1047  
1048



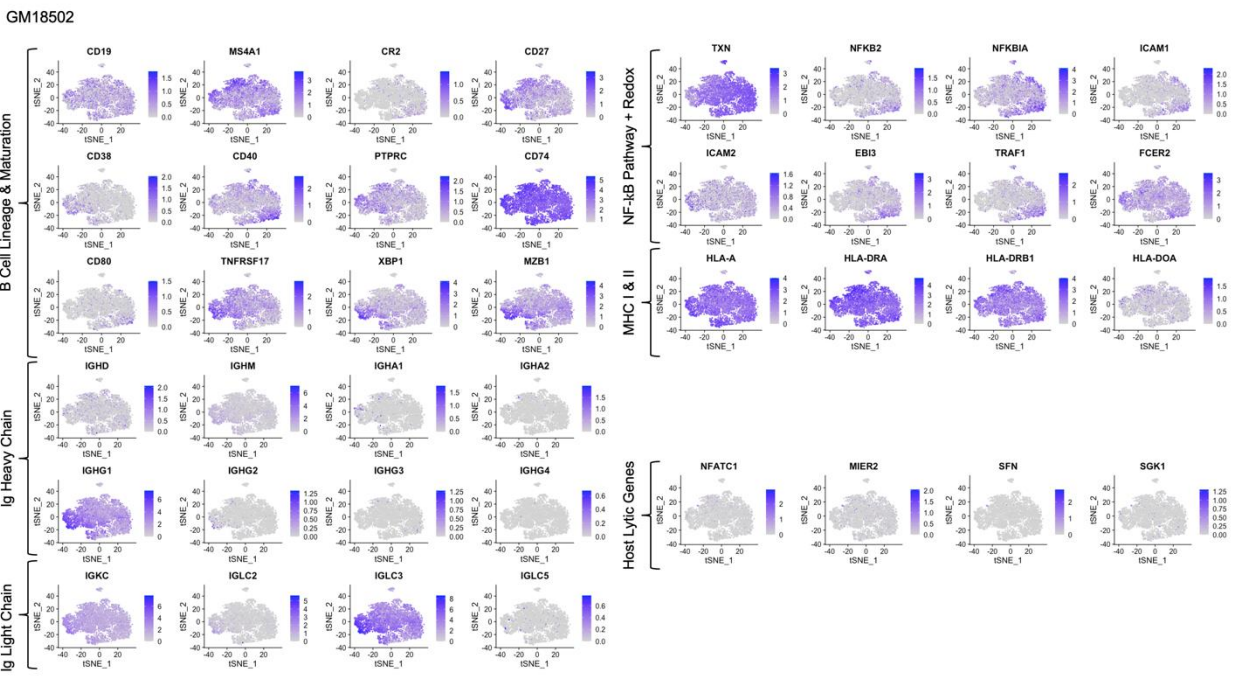
1049  
1050  
1051  
1052

1053



1054  
1055  
1056  
1057

Figure 1 – figure supplement 10. Expression of key genes groups in GM12878.

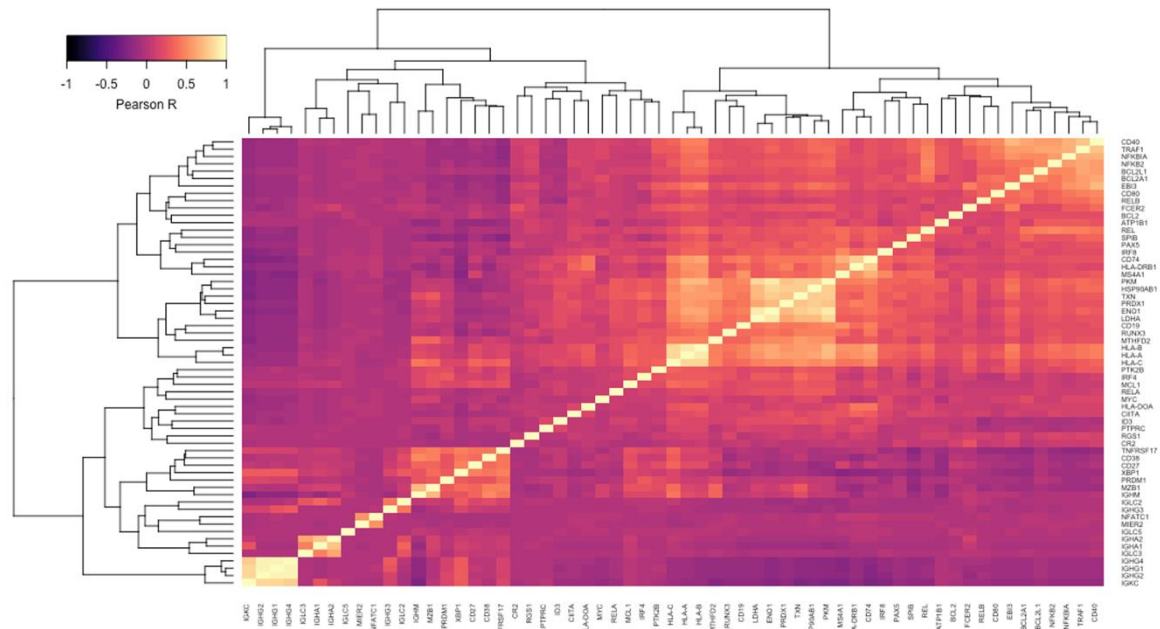


1058  
1059  
1060

Figure 1 – figure supplement 11. Expression of key genes groups in GM18502.

1061

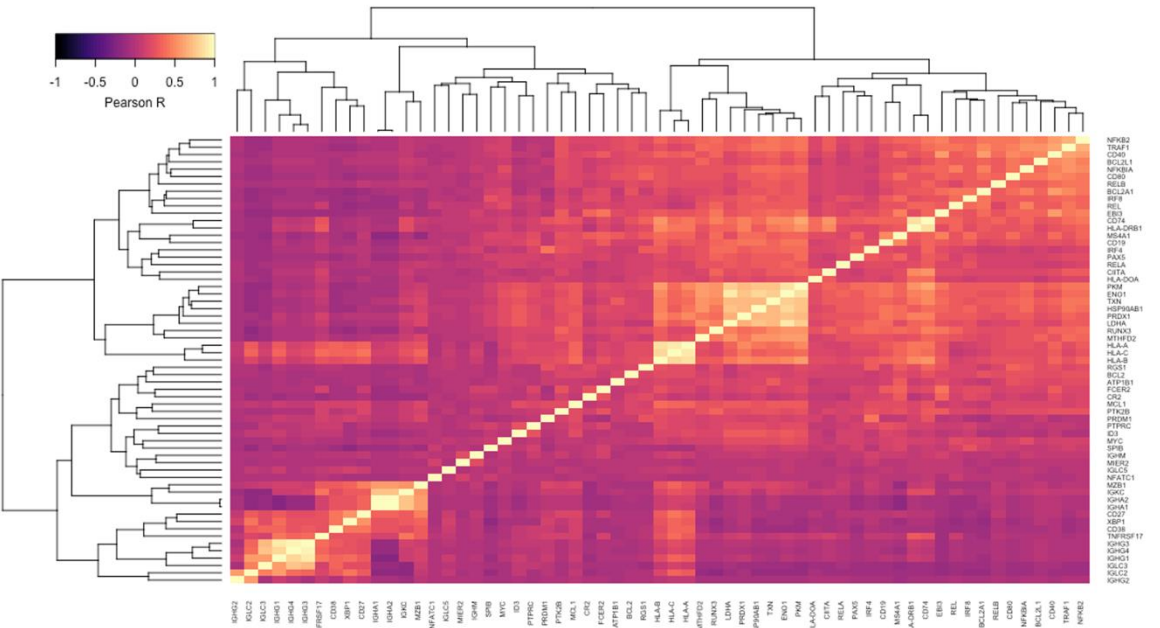
LCL 777 B95-8



1062  
1063  
1064  
1065

**Figure 1 – figure supplement 12. Pairwise Pearson correlation values across key gene groups in LCL 777 B95-8.**

LCL 777 M81



1066  
1067  
1068  
1069  
1070

**Figure 1 – figure supplement 13. Pairwise Pearson correlation values across key gene groups in LCL 777 M81.**





1080  
GM18502

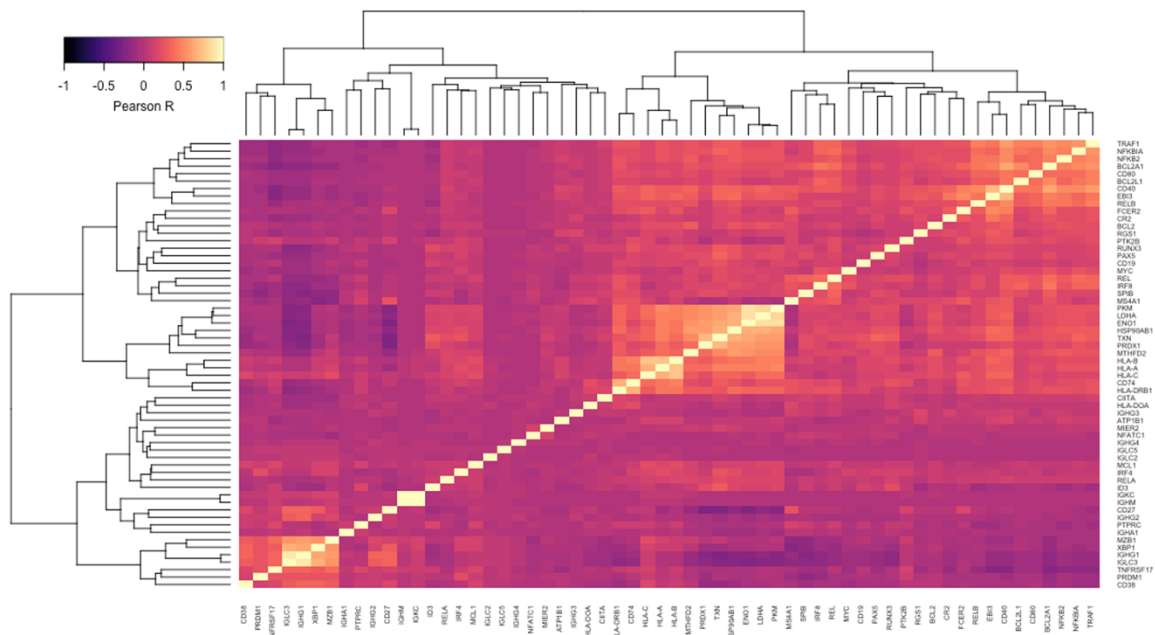


Figure 1 – figure supplement 16. Pairwise Pearson correlation values across key gene groups in GM18502.

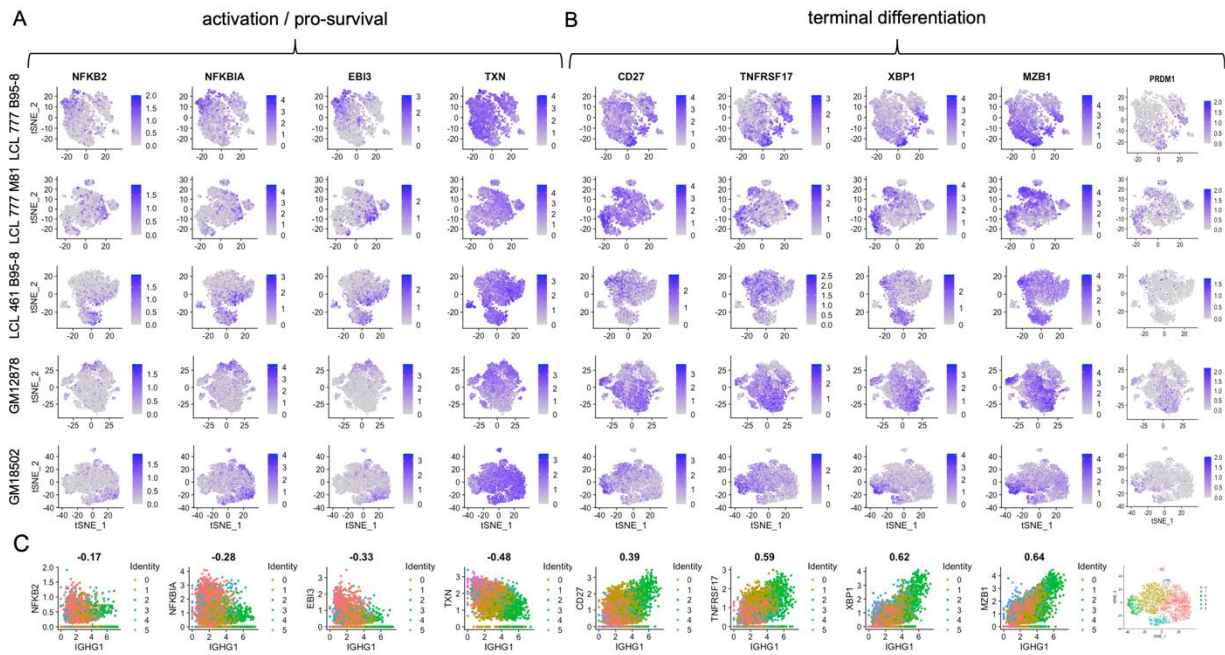


Figure 2 – figure supplement 1. Expression of individual genes within activation and differentiation gene sets. (A) Expression of genes involved in activation / pro-survival of B cells. (B) Expression of genes involved in B cell differentiation. (C) Correlation of each activation and differentiation gene with IgG1 expression for GM18502 (a sample with a single isotype class).

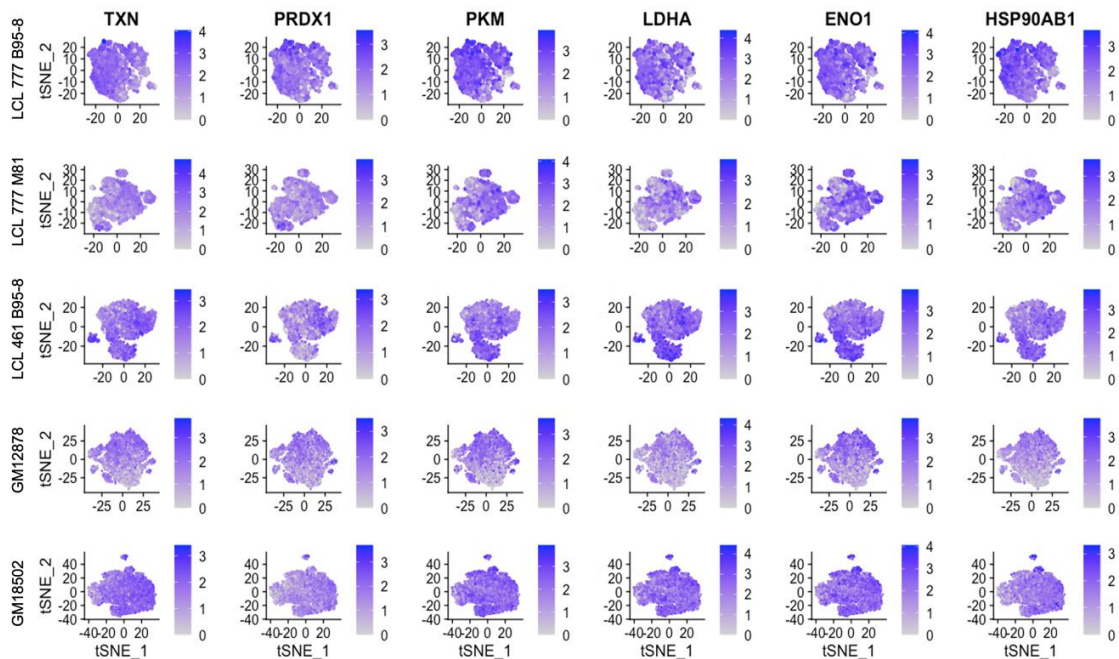


Figure 2 – figure supplement 2. Expression of metabolic and oxidative stress genes.

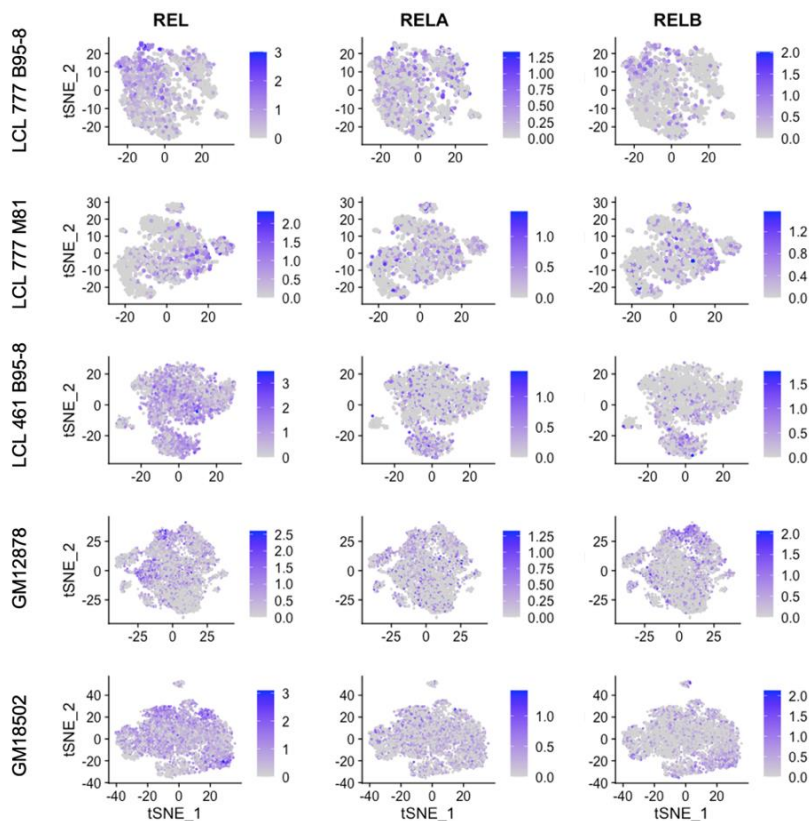


Figure 2 – figure supplement 3. Expression of NF- $\kappa$ B subunits c-REL, RELA, and RELB.



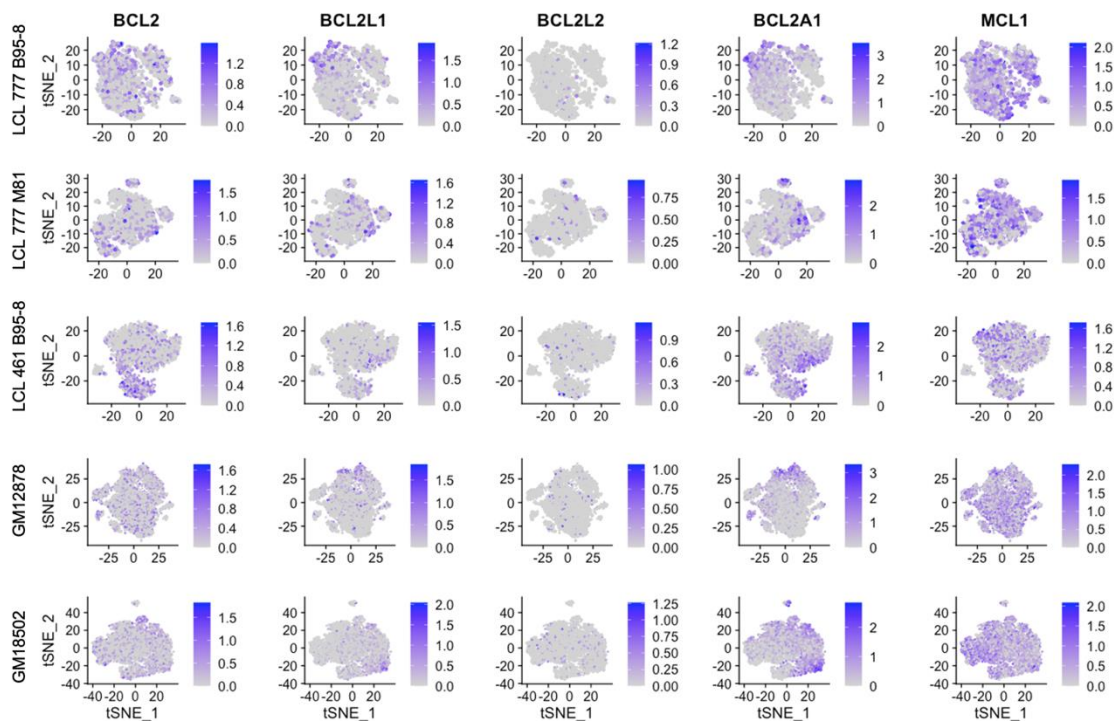


Figure 2 – figure supplement 4. Expression of BCL family genes across LCL samples.

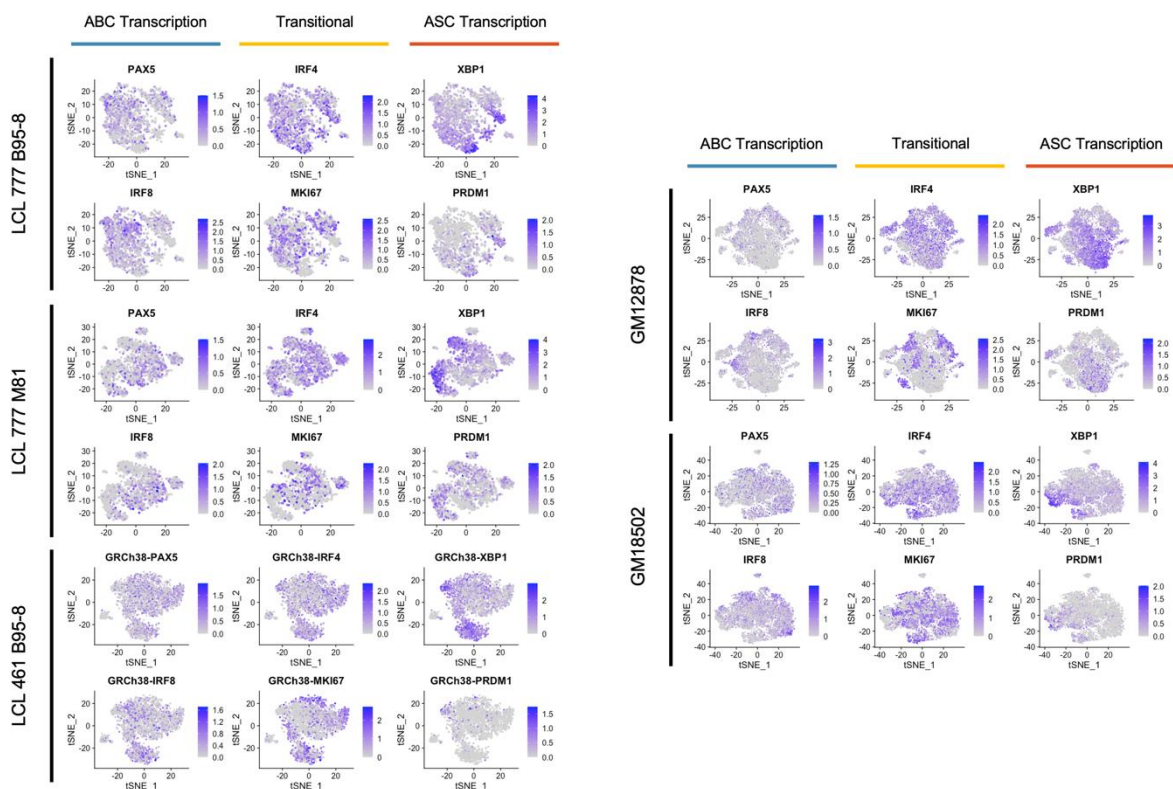


Figure 2 – figure supplement 5. Expression trends in key transcriptional regulators controlling activated B cell (ABC) and antibody-secreting cell (ASC) phenotypes.

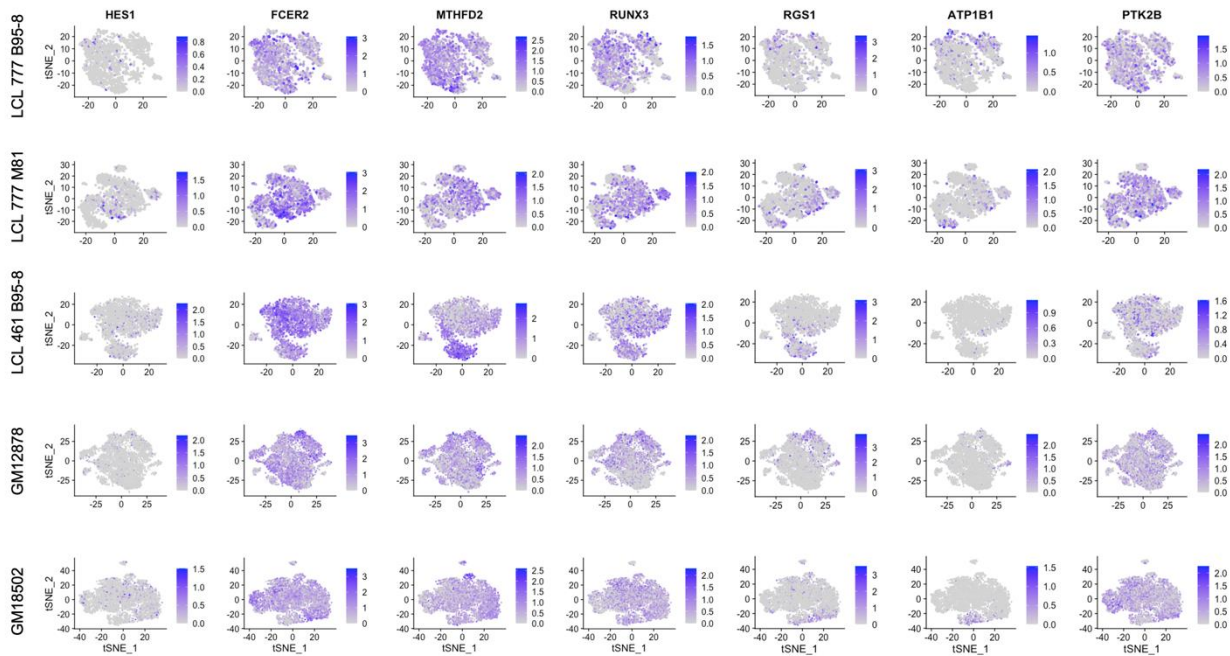
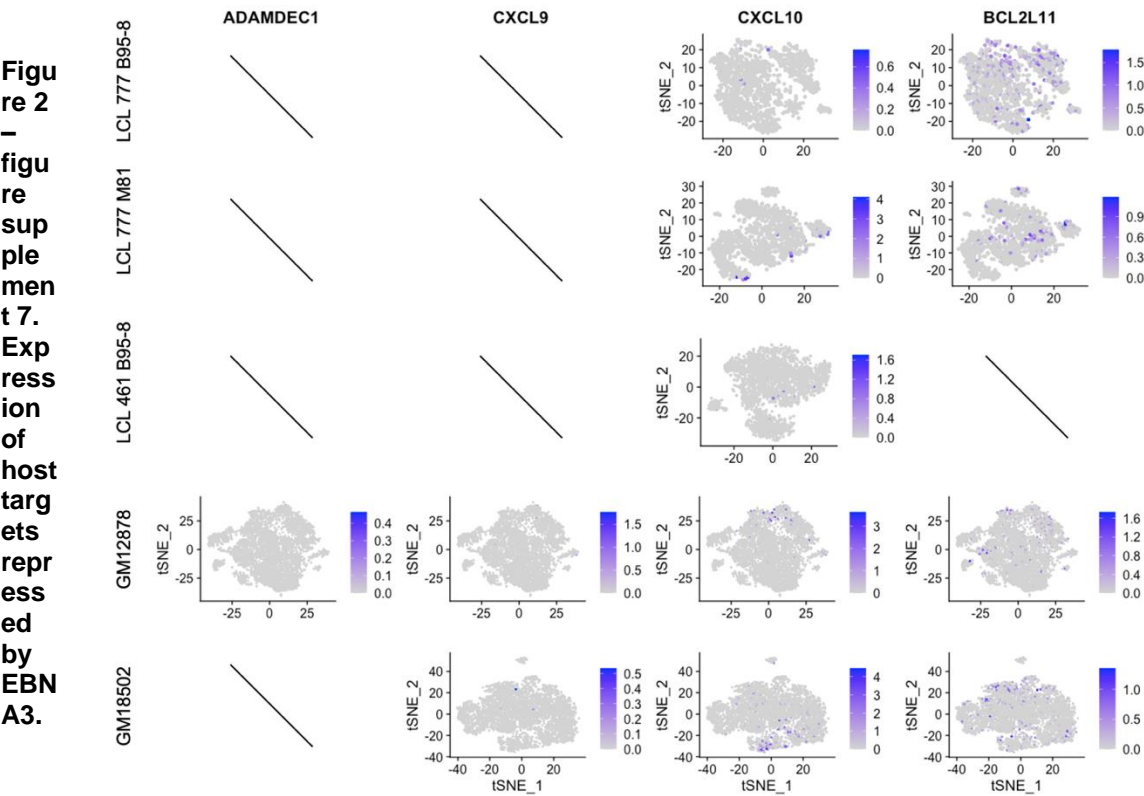
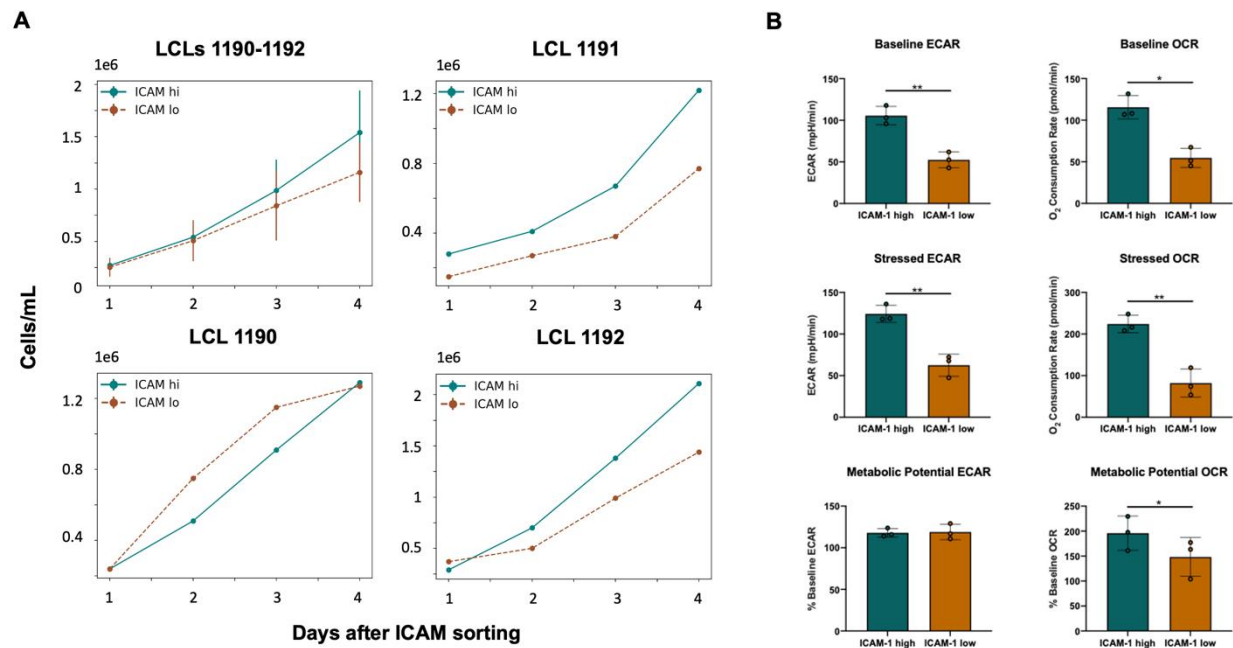


Figure 2 – figure supplement 6. Expression of host targets upregulated by EBNA2.



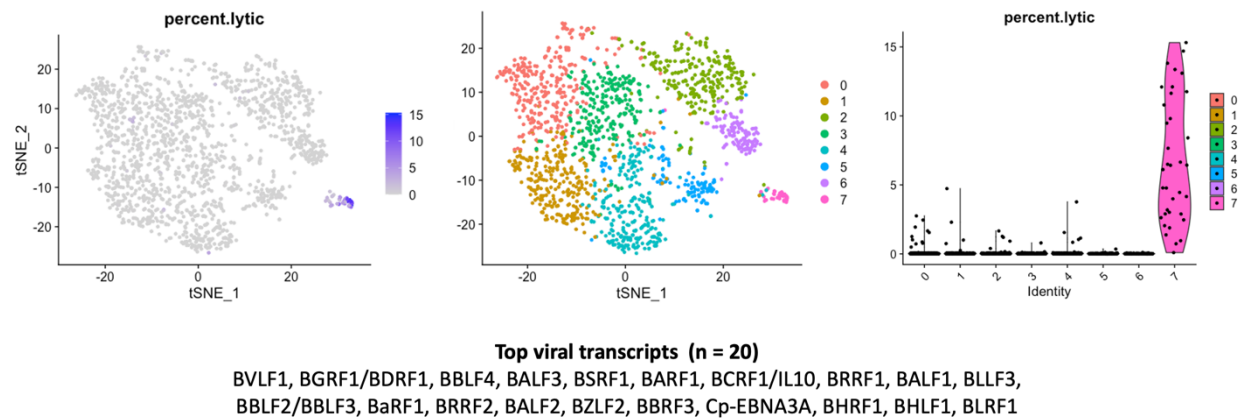


1156



1157  
1158  
1159  
1160  
1161  
1162  
1163  
1164

**Figure 2 – figure supplement 8. Cell proliferation and metabolic profiling by ICAM expression. (A)** Averaged (top-left panel) and individual LCL growth rates in sorted ICAM-hi (teal) and ICAM-lo (sienna) fractions. **(B)** Metabolic profiling of ICAM-hi and ICAM-lo fractions of LCLs.



1165  
1166  
1167  
1168  
1169  
1170  
1171

**Figure 3 – figure supplement 1. Percent of viral lytic transcripts relative to total transcripts in LCL\_777\_B958 lytic cell cluster.**

LCL 777 B95-8

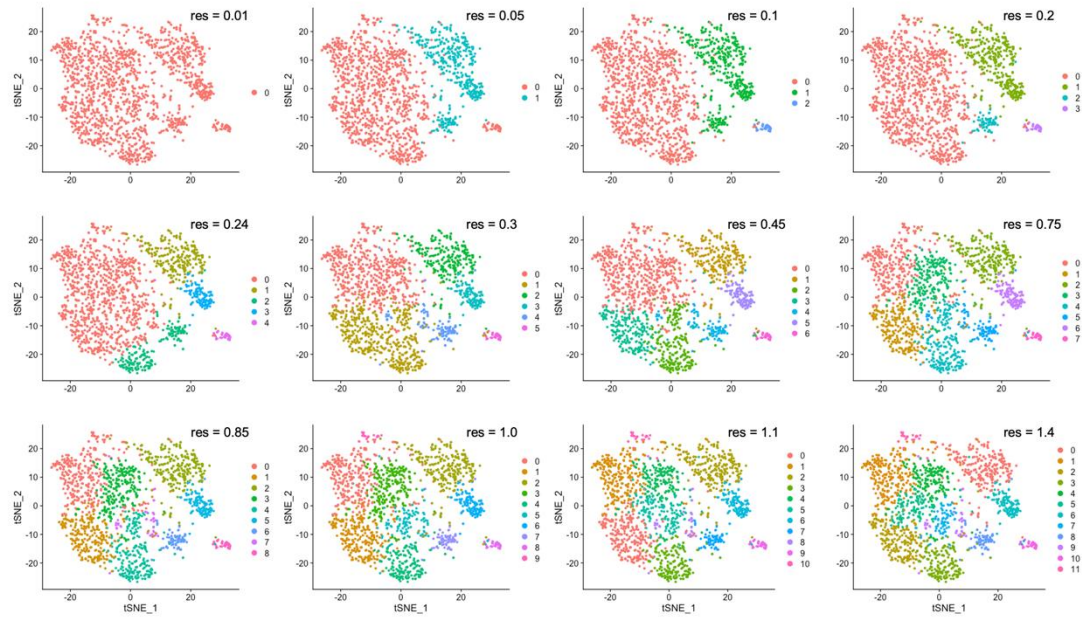


Figure 4 – figure supplement 1. Clustering resolution screens for LCL 777 B95-8.

LCL 777 M81

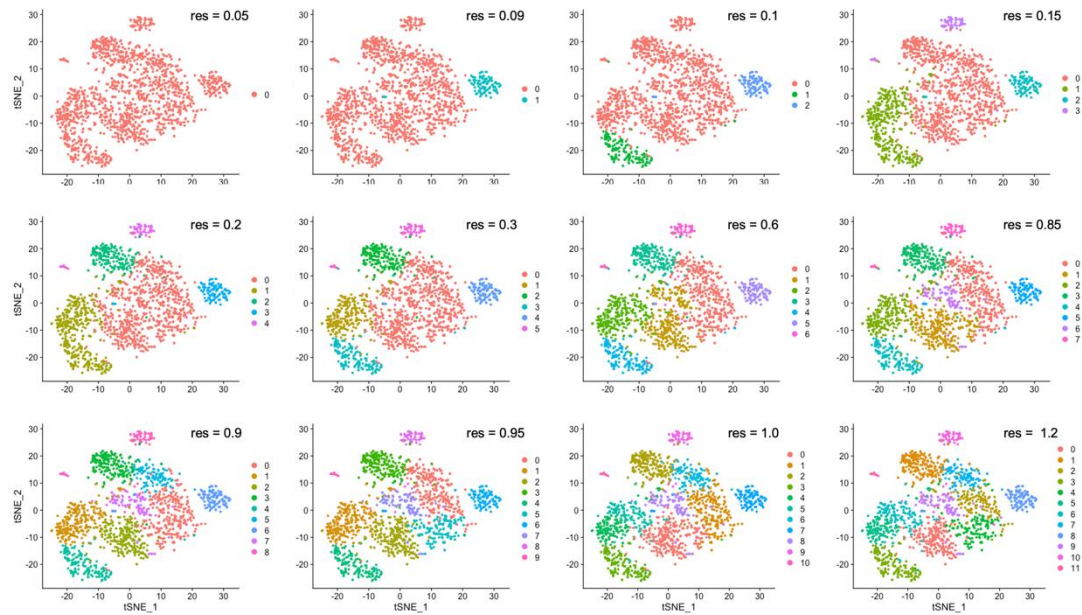


Figure 4 – figure supplement 2. Clustering resolution screens for LCL 777 M81.

LCL 461 B95-8

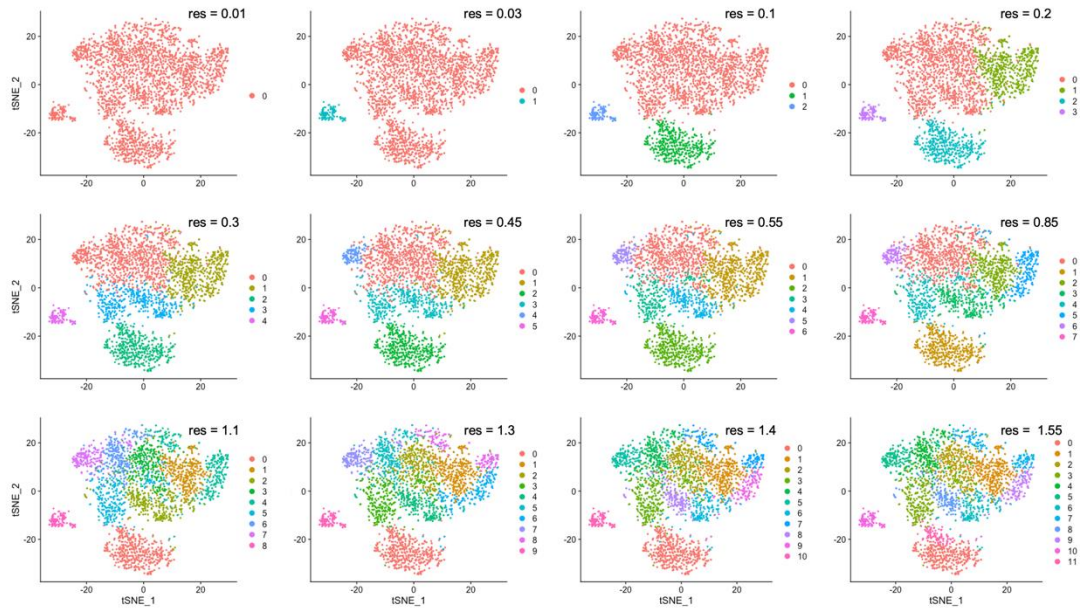


Figure 4 – figure supplement 3. Clustering resolution screens for LCL 461 B95-8.

GM12878

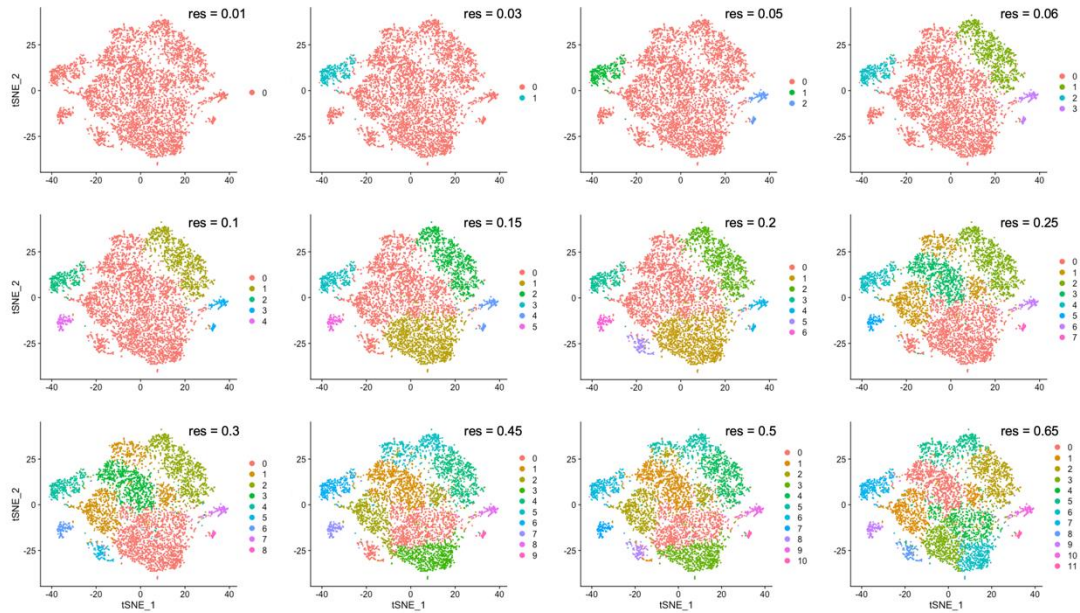


Figure 4 – figure supplement 4. Clustering resolution screens for GM12878.



GM18502

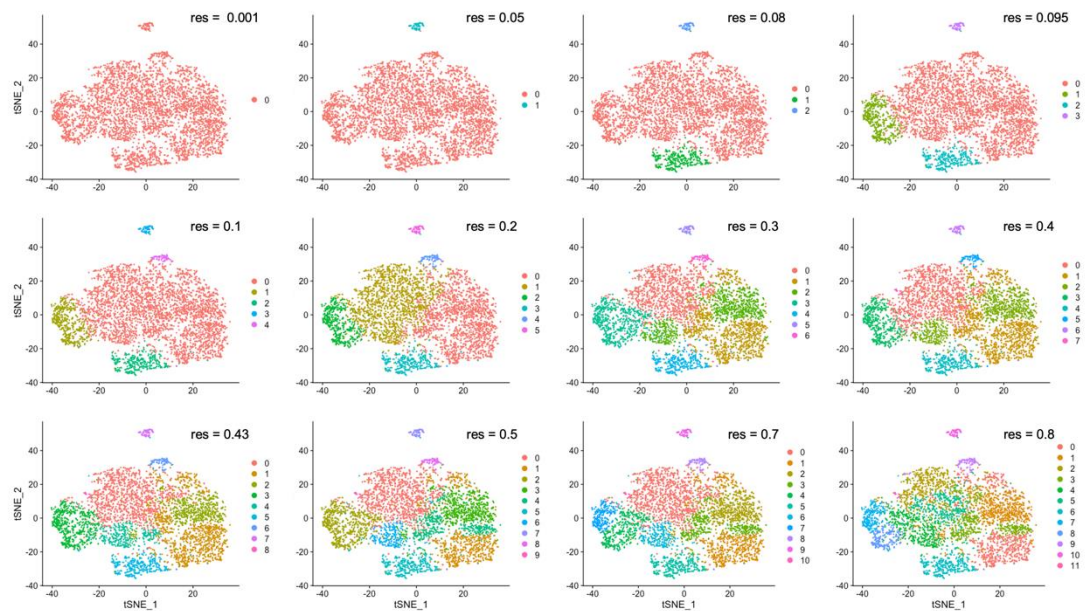


Figure 4 – figure supplement 5. Clustering resolution screens for GM18502.

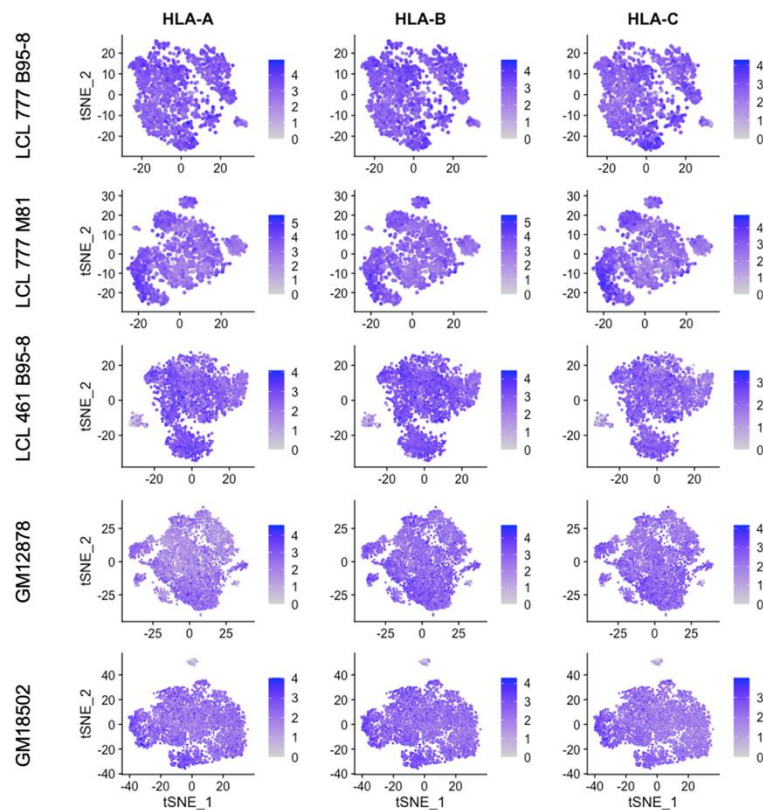
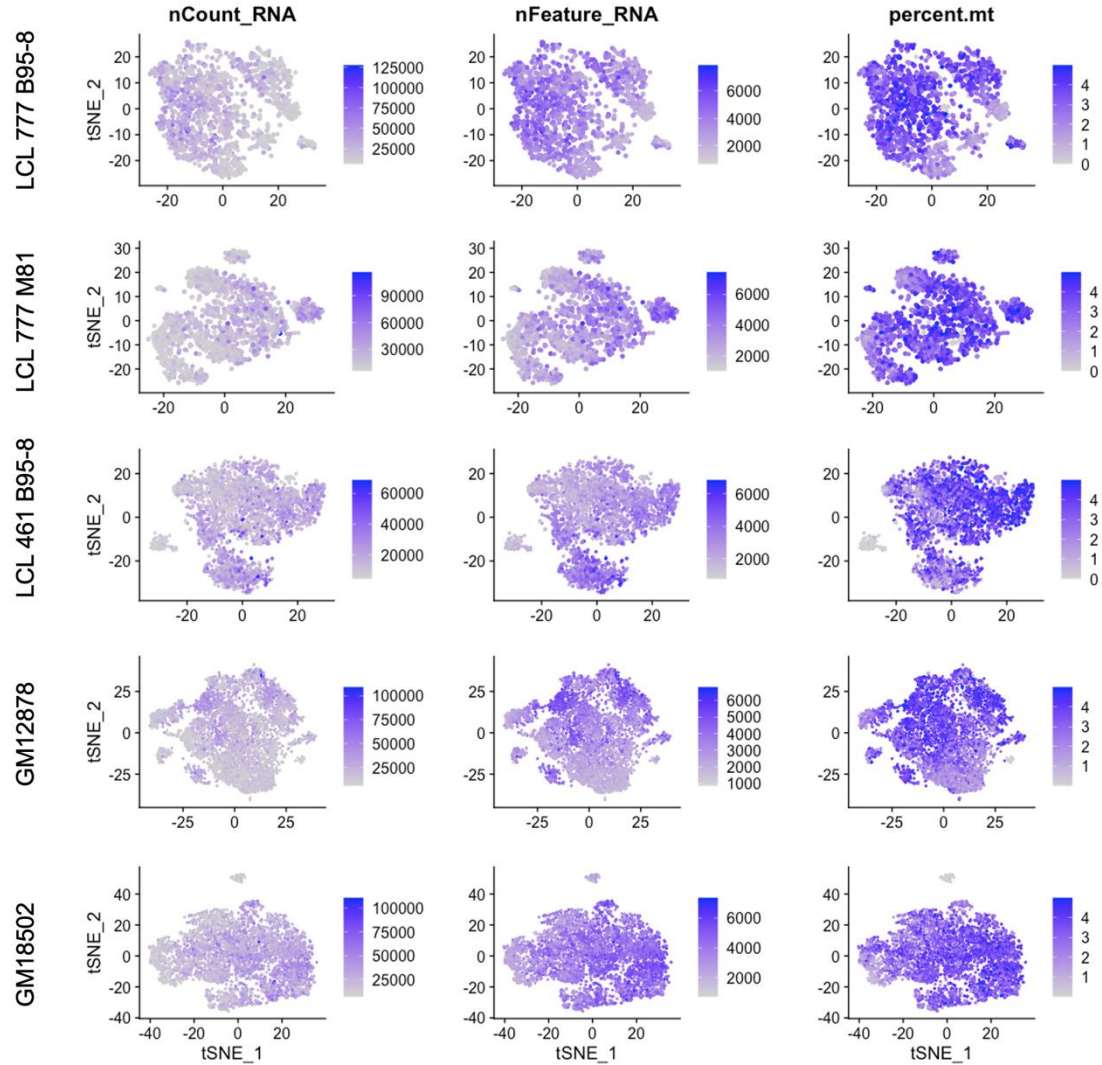


Figure 4 – figure supplement 6. Expression of MHC class I genes HLA-A, HLA-B, and HLA-C.



**Figure 4 – figure supplement 7. Total RNA counts, unique feature, and mitochondrial percentage distributions across LCL samples.**