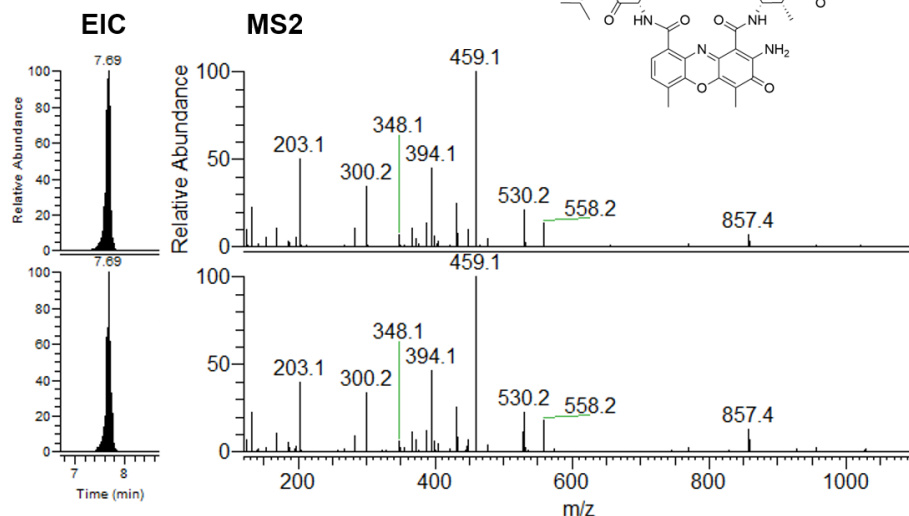
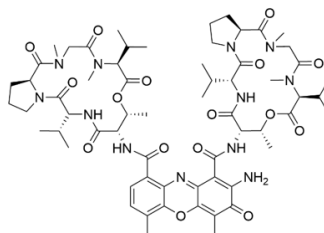


[M+H]⁺
Mass error: 1.7 ppm



Standard

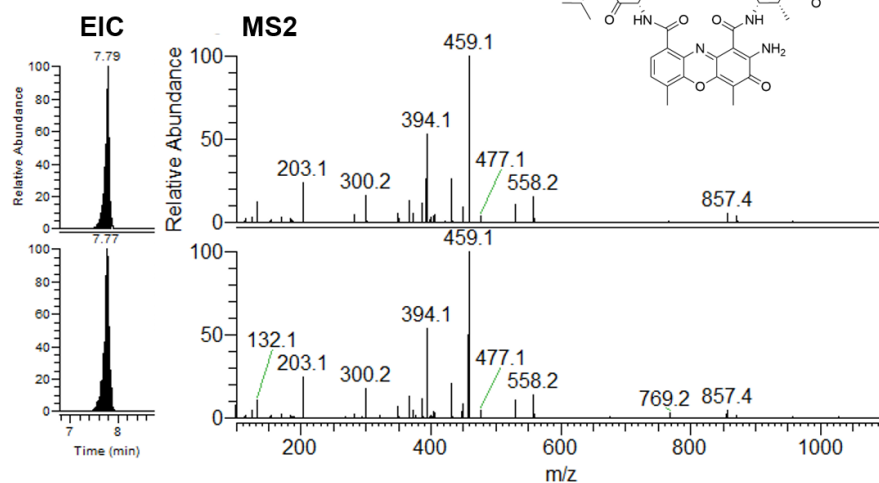
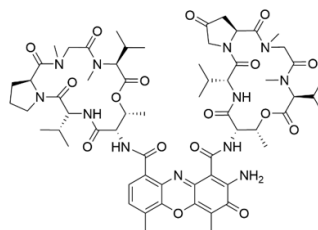
NL: 1.36E6
021620_Std_ActD#3128-3223
RT: 7.63-7.72 AV: 2 F: FTMS + p
ESI d Full ms2
1255.6366@hcd30.00
[50.0000-1300.0000]

Strain P333

NL: 6.63E6
011319_EtAcMS2_P333#3913-
4025 RT: 7.67-7.77 AV: 2 F:
FTMS + p ESI d Full ms2
1255.6366@hcd30.00
[50.0000-1300.0000]

(2) Actinomycin X2

[M+H]⁺
Mass error: 2.2 ppm



Standard

NL: 1.61E6
052120_Std_ActinomycinX2#3188-
3253 RT: 7.74-7.82 AV: 2 F: FTMS
+ p ESI d Full ms2
1269.6119@hcd30.00
[50.0000-1315.0000]

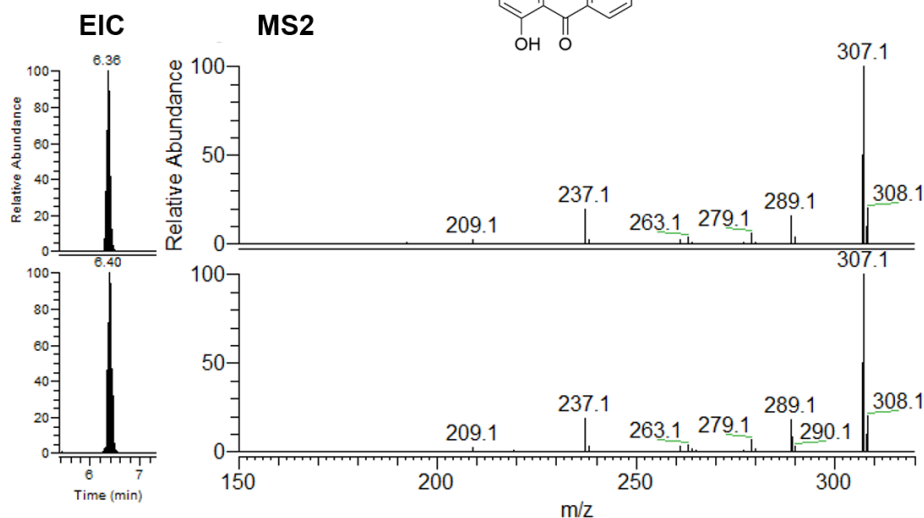
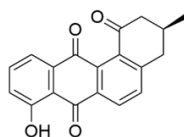
Strain P333

NL: 1.90E7
011319_EtAcMS2_P333#3969-
4052 RT: 7.74-7.84 AV: 2 F: FTMS
+ p ESI d Full ms2
1269.6119@hcd30.00
[50.0000-1315.0000]

(3) STA-21

$[M+H]^+$

Mass error: 1.6 ppm



Standard

NL: 1.76E7
032019_Std_STA-21#2724
RT: 6.38 AV: 1 F: FTMS + p
ESI d Full ms2
307.0964@hcd30.00
[50.0000-330.0000]

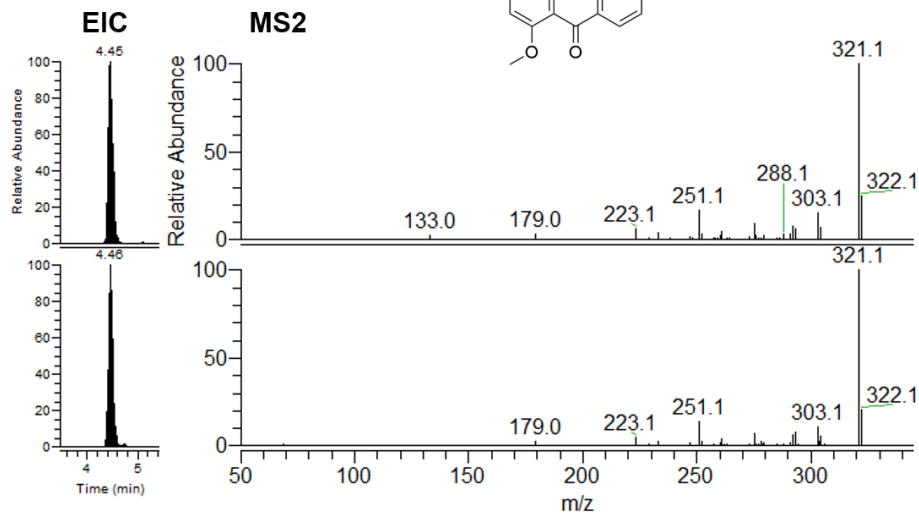
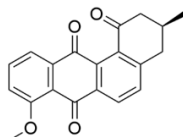
Strain P239

NL: 1.58E6
011319_EtAcMS2_P239#2963
RT: 6.36 AV: 1 F: FTMS + p
ESI d Full ms2
307.0964@hcd30.00
[50.0000-330.0000]

(4) Rubiginone B2

$[M+H]^+$

Mass error: 2.2 ppm



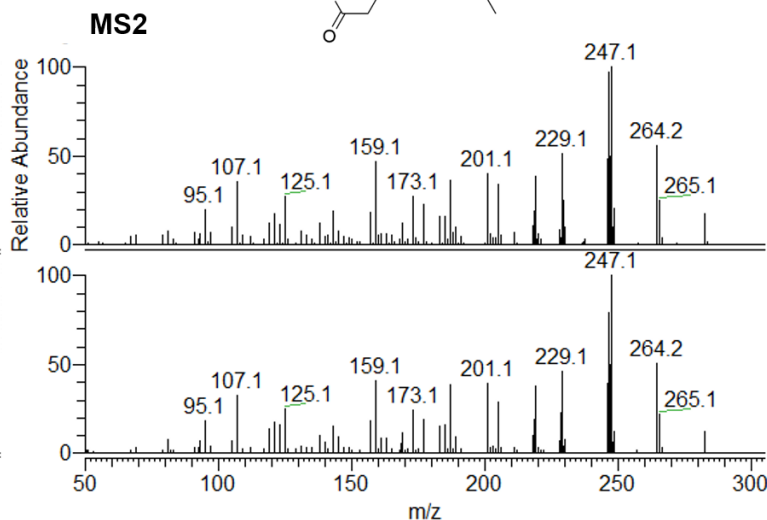
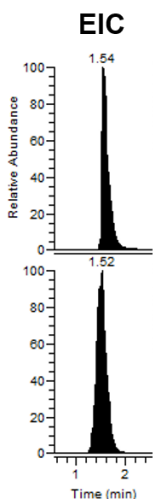
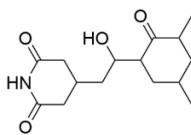
Standard

NL: 1.36E8
021620_Std_Rubiginone#1814
RT: 4.43 AV: 1 T: FTMS + p ESI
d Full ms2 321.1118@hcd30.00
[50.0000-345.0000]

Strain P239

NL: 1.75E7
011319_EtAcMS2_P239#2151
RT: 4.45 AV: 1 F: FTMS + p ESI
d Full ms2 321.1125@hcd30.00
[50.0000-345.0000]

[M+H]⁺
Mass error: 2.1 ppm



Standard

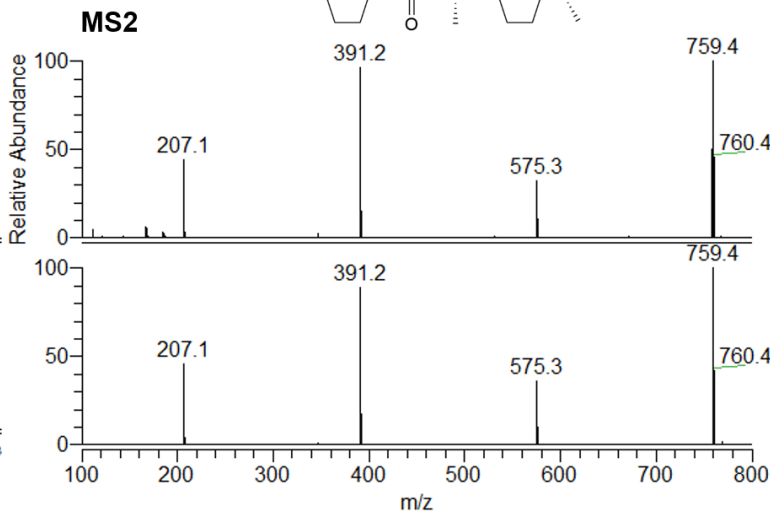
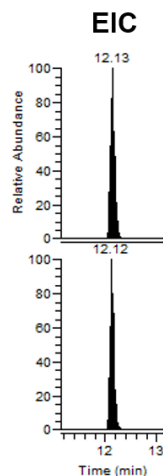
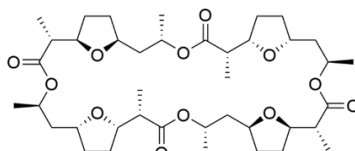
NL: 1.34E8
012419_cycloheximide-#802
RT: 1.62 AV: 1 F: FTMS + p
ESI d Full ms2
282.1703@hcd30.00
[50.0000-305.0000]

Strain P263

NL: 3.05E7
011319_EtAcMS2_P263#816
RT: 1.58 AV: 1 F: FTMS + p
ESI d Full ms2
282.1703@hcd30.00
[50.0000-305.0000]

(6) Nonactin

[M+Na]⁺
Mass error: 2.6 ppm



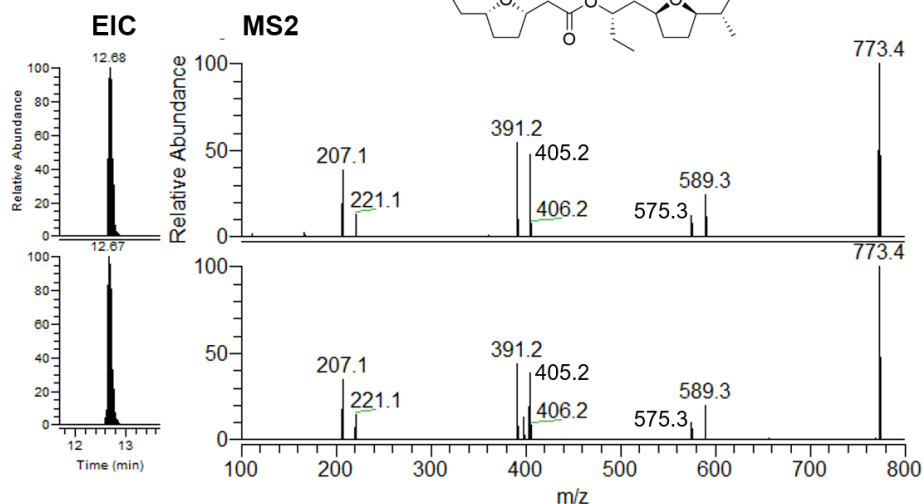
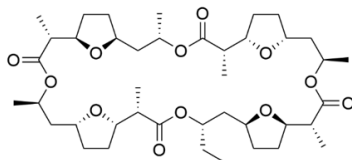
Standard

NL: 1.18E7
092520_Nactins_Std#5285 RT:
12.08 AV: 1 F: FTMS + p ESI d
Full ms2 759.4280@hcd30.00
4 [50.0000-795.0000]

Strain P327

NL: 4.89E6
011319_EtAcMS2_P327#5713
RT: 12.08 AV: 1 F: FTMS + p
ESI d Full ms2
759.4280@hcd30.00
[50.0000-795.0000]

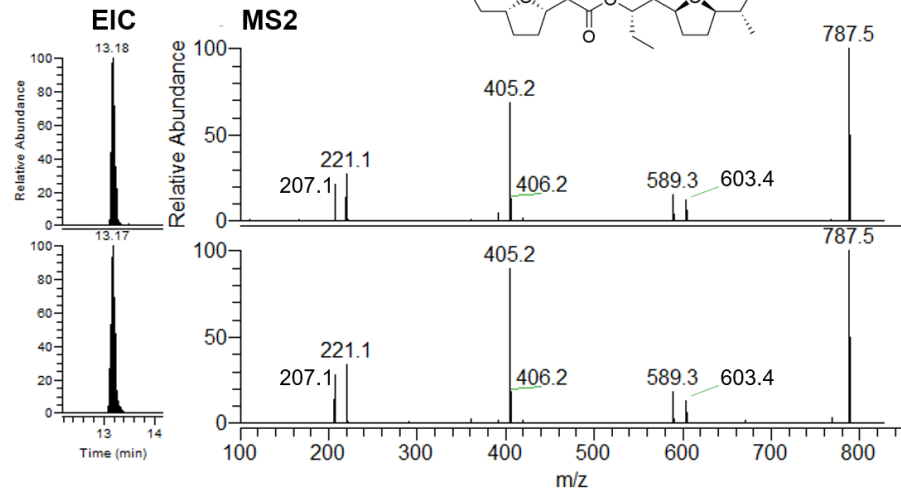
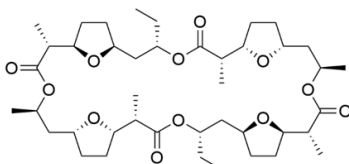
[M+Na]⁺
Mass error: 3.2 ppm



Standard
NL: 6.49E6
092520_Nactins_Std#1-9209 RT:
12.51-13.08 AV: 13 F: FTMS + p
ESI d Full ms2
773.4428@hcd30.00
[50.0000-810.0000]

NL: 1.02E7
011319_EtAcMS2_P327#1-
11110 RT: 5.31-13.37 AV: 13 F:
FTMS + p ESI d Full ms2
773.4440@hcd30.00
[50.0000-810.0000]

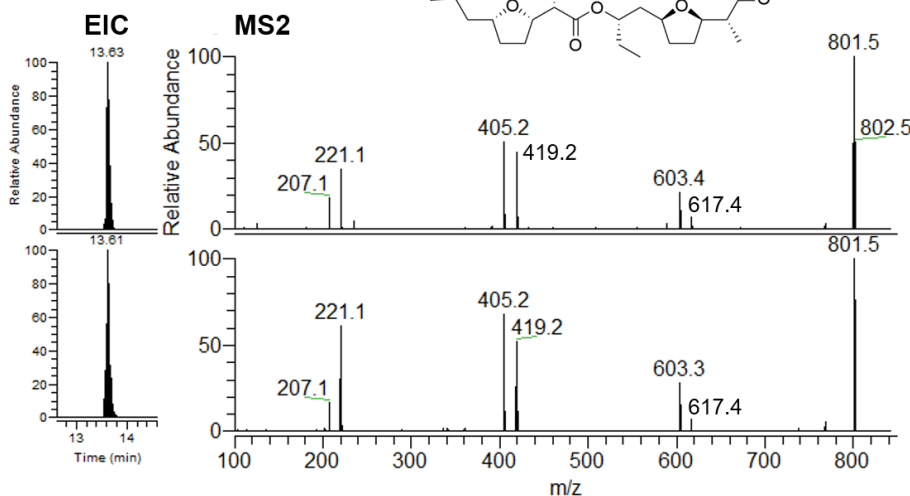
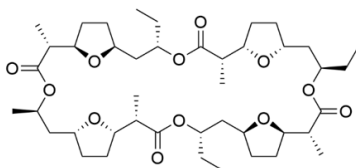
[M+Na]⁺
Mass error: 3.4 ppm



NL: 6.05E6
092520_Nactins_Std#1-9209 RT:
13.03-13.54 AV: 13 F: FTMS + p
ESI d Full ms2
787.4589@hcd30.00
[50.0000-820.0000]

NL: 1.33E7
011319_EtAcMS2_P327#1-
11110 RT: 9.30-14.95 AV: 18 F:
FTMS + p ESI d Full ms2
787.4597@hcd30.00
[50.0000-820.0000]

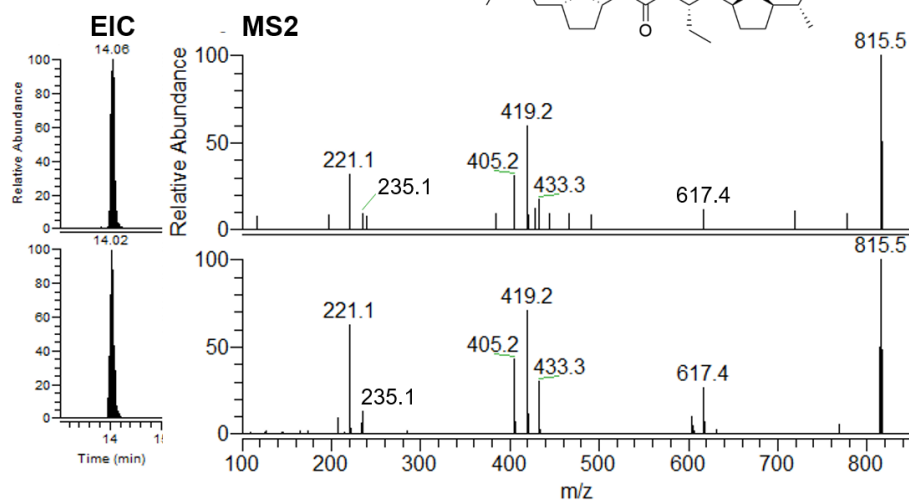
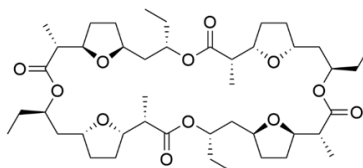
[M+Na]⁺
Mass error: 2.5 ppm



NL: 1.18E6
092520_Nactins_Std#1-9209 RT:
13.45-13.78 AV: 8 F: FTMS + p
ESI d Full ms2
801.4750@hcd30.00
[50.0000-835.0000]

NL: 8.69E6
011319_EtAcMS2_P327#1-
11110 RT: 13.44-14.10 AV: 9 F:
FTMS + p ESI d Full ms2
801.4780@hcd30.00
[50.0000-835.0000]

[M+Na]⁺
Mass error: 1.7 ppm

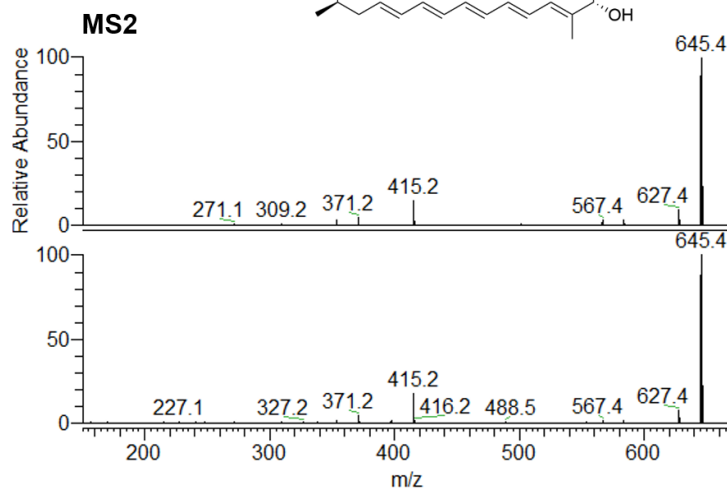
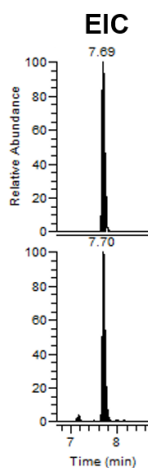
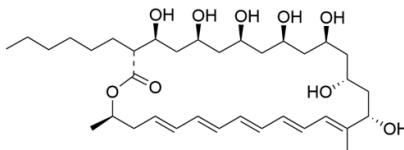


092520_Nactins_Std#6273 RT:
14.00 AV: 1 F: FTMS + p ESI d
Full ms2 815.4909@hcd30.00
[50.0000-850.0000]

NL: 1.28E6
011319_EtAcMS2_P327#1-
11110 RT: 13.97-14.15 AV: 3 F:
FTMS + p ESI d Full ms2
815.4900@hcd30.00
[50.0000-850.0000]

(11) Filipin I $[M+Na]^+$

Mass error: 1.1 ppm

**Standard**

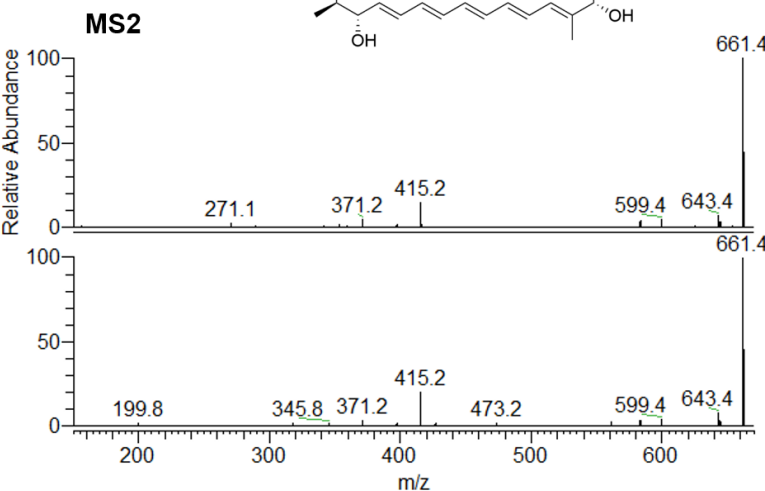
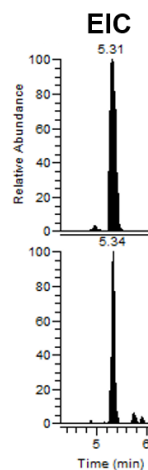
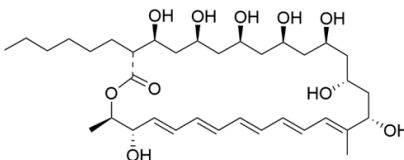
NL: 4.28E5
052120_Std_FilipinComplex#3604-3691 RT: 7.64-7.73 AV: 2 F: FTMS + p ESI d Full ms2
645.3947@hcd30.00
[50.0000-675.0000]

Strain P181

NL: 1.29E5
021320_EtAc_P181#3522-3606 RT: 7.65-7.74 AV: 2 F: FTMS + p ESI d Full ms2
645.3947@hcd30.00
[50.0000-675.0000]

(12) Filipin II $[M+Na]^+$

Mass error: 1.7 ppm

**Standard**

NL: 5.50E6
052120_Std_FilipinComplex#2590 RT: 5.32 AV: 1 F: FTMS + p ESI d Full ms2
661.3928@hcd30.00
[50.0000-695.0000]

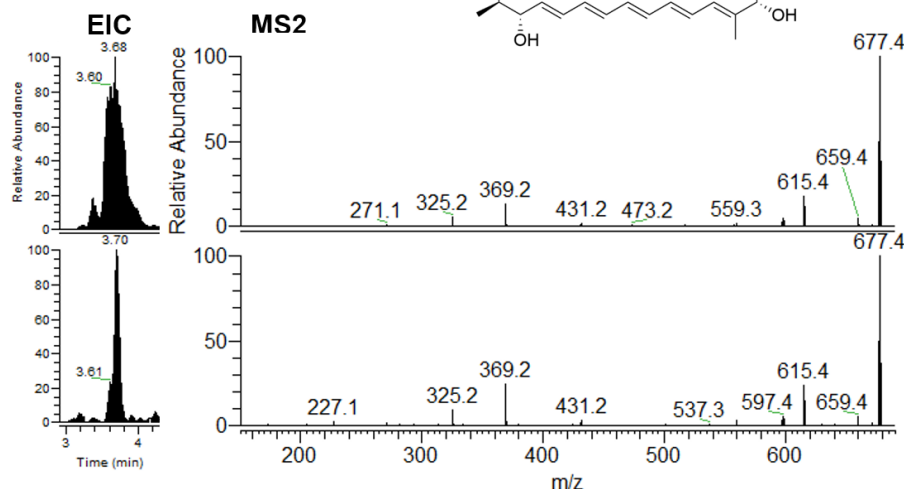
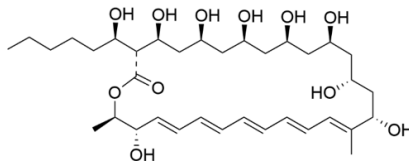
Strain P181

NL: 1.30E5
021320_EtAc_P181#2491 RT: 5.36 AV: 1 F: FTMS + p ESI d Full ms2
661.3928@hcd30.00
[50.0000-695.0000]

(13) Filipin III
[M+Na]⁺
Mass error: 0.3 ppm

 $[M+Na]^+$

Mass error: 0.3 ppm



Standard

NL: 4.50E6

052120_Std_FilipinComplex#1738-
1911 RT: 3.63-3.81 AV: 3 F: FTMS
+ p ESI d Full ms2
677.3857@hcd30.00
[50.0000-710.0000]

Strain P181

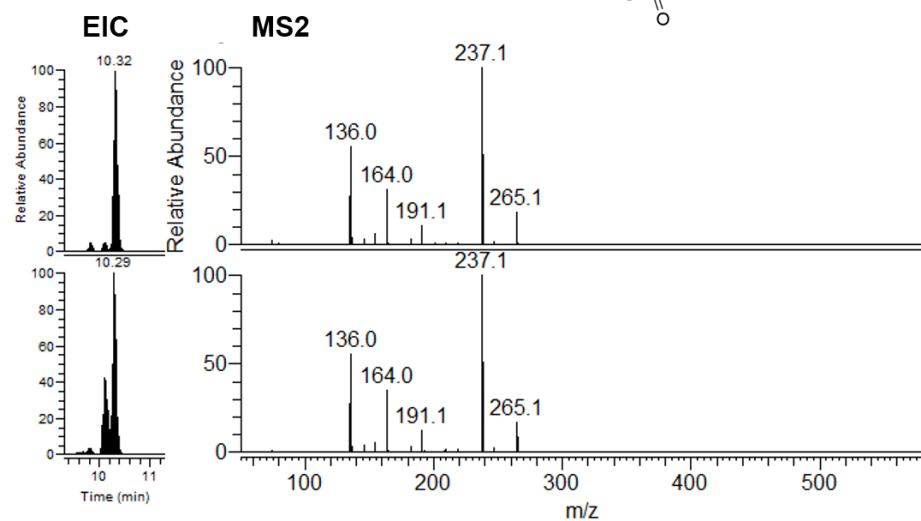
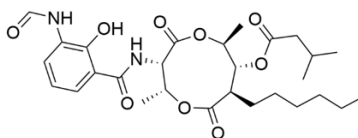
NL: 1.01E5

021320_EtAc_P181#1741-1904
RT: 3.66-3.90 AV: 3 F: FTMS + p
ESI d Full ms2 677.3857@hcd30.00
[50.0000-710.0000]

(18) Antimycin A
[M+H]⁺
Mass error: 0.0 ppm

$[M+H]^+$

Mass error: 0.0 ppm



Standard

NL: 1.01E7

021720_Std_Antimycin#4334
RT: 10.36 AV: 1 T: FTMS + p
ESI d Full ms2
549.2809@hcd30.00
[50.0000-580.0000]

Strain P203

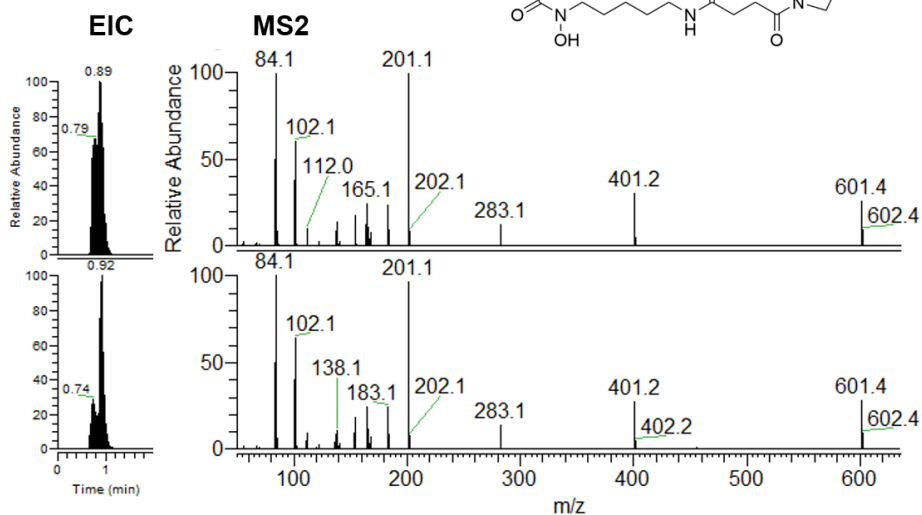
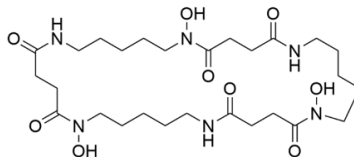
NL: 2.35E6

011319_EtAcMS2_P203#4928
RT: 10.32 AV: 1 F: FTMS + p
ESI d Full ms2
549.2809@hcd30.00
[50.0000-580.0000]

(19) Nocardamine

$[M+H]^+$

Mass error: 0.8 ppm



Standard

NL: 9.53E5

022520_Std_Nocardamine#207-
442 RT: 0.70-0.96 AV: 4 F: FTMS
+ p ESI d Full ms2
601.3552@hcd30.00
[50.0000-630.0000]

Strain P307

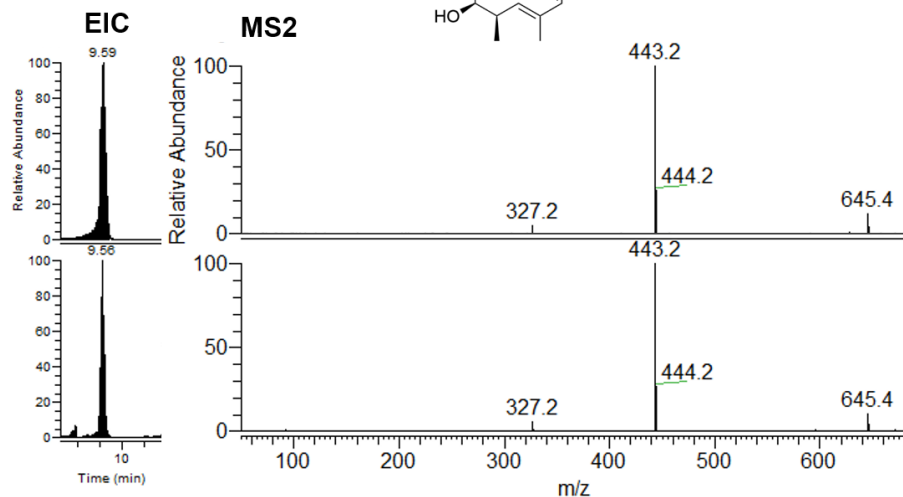
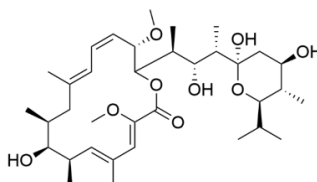
NL: 9.62E5

011319_EtAcMS2_P307#207-465
RT: 0.70-0.98 AV: 4 F: FTMS + p
ESI d Full ms2
601.3552@hcd30.00
[50.0000-630.0000]

(20) Bafilomycin A1

$[M+Na]^+$

Mass error: 1.7 ppm



Standard

NI - 6.33F6

100219_BafilomycinA1#3952-
4066 RT: 9.54-9.63 AV: 2 F:
FTMS + c ESI d Full ms2
645.3981@hcd30.00
[50.0000-675.0000]

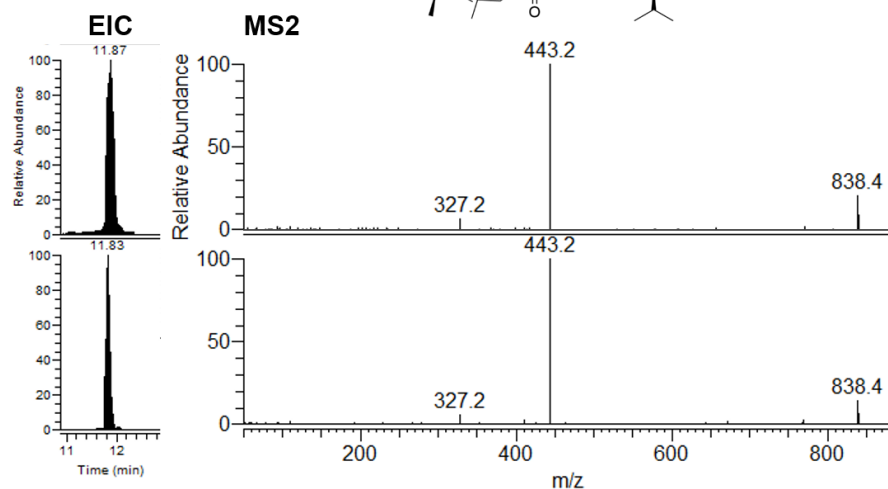
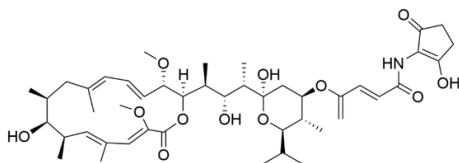
Strain P059

NL: 5.72E5

021320_EtAc_P059#4397-4507
RT: 9.51-9.60 AV: 2 F: FTMS + p
ESI d Full ms2
645.3964@hcd30.00
[50.0000-675.0000]

(21) Bafilomycin B1 $[M+Na]^+$

Mass error: 2.0 ppm

**Standard**

NL: 3.63E6

100219_BafilomycinB1#5271-5387

RT: 11.79-11.89 AV: 2 F: FTMS +

c ESI d Full ms2

838.4347@hcd30.00

[50.0000-875.0000]

Strain P059

NL: 6.24E6

021320_EtAc_P059#5640-5752

RT: 11.85-11.94 AV: 2 F: FTMS + p

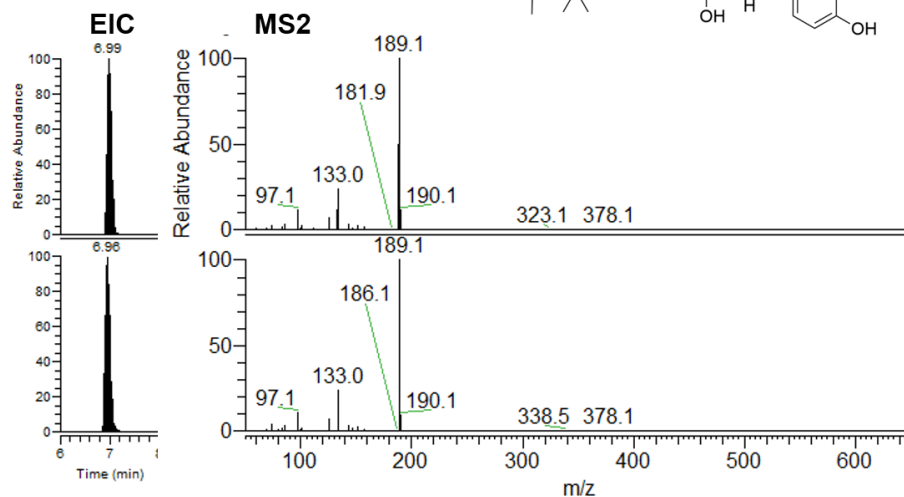
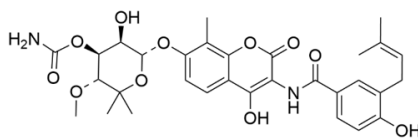
ESI d Full ms2

838.4344@hcd30.00

[50.0000-875.0000]

(22) Novobiocin $[M+H]^+$

Mass error: 2.4 ppm

**Standard**

NL: 1.51E7

021720_Std_Novobiocin#2811-

2913 RT: 6.94-7.03 AV: 2 F:

FTMS + p ESI d Full ms2

613.2393@hcd30.00

[50.0000-645.0000]

Strain P049

NL: 3.49E7

011319_EtAcMS2_P049#3500-

3614 RT: 6.96-7.08 AV: 2 F:

FTMS + p ESI d Full ms2

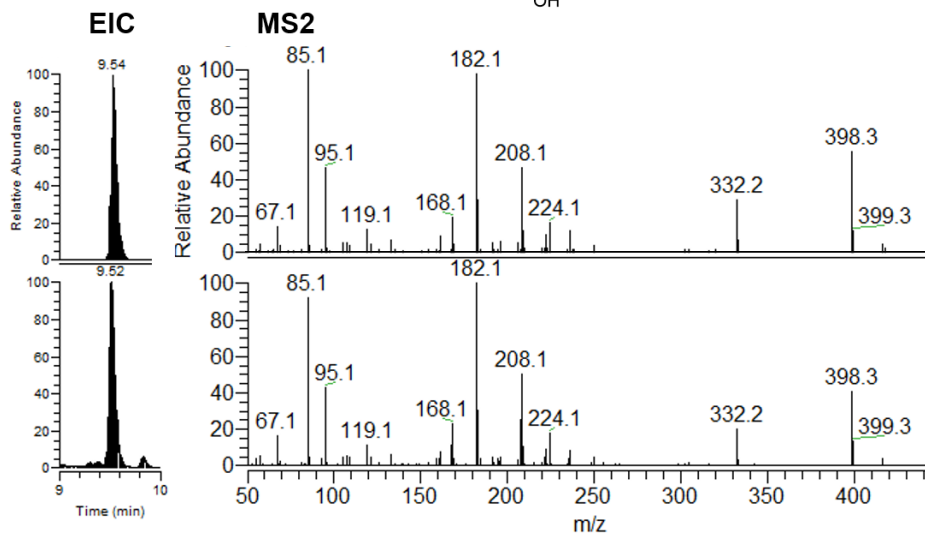
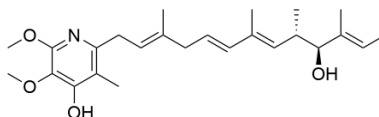
613.2391@hcd30.00

[50.0000-645.0000]

(24) Piericidin A

$[M+H]^+$

Mass error: 2.6 ppm



Standard

NL: 2.04E7

100219_Piericidin#4783 RT:
9.53 AV: 1 F: FTMS + c ESI d
Full ms2 416.2798@hcd30.00
[50.0000-445.0000]

Strain P190

NL: 2.29E6

021420 EtAc P190#4166

RT: 9.51⁻ AV: 1 T: FTMS + p

ESI d Full ms2

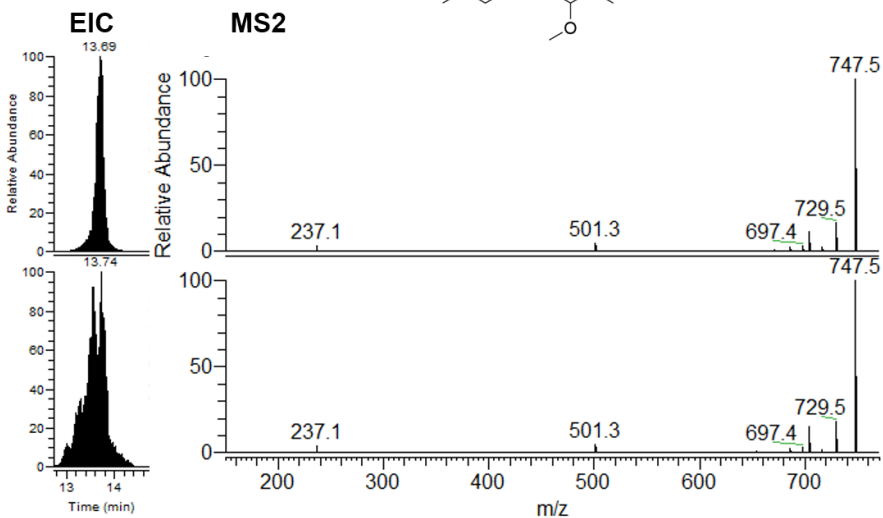
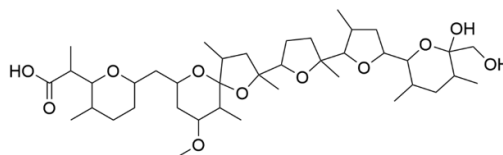
416.2788@hcd30.00

[50.0000-445.0000]

(25) Nigericin

$[M+Na]^+$

Mass error: 0.5 ppm



Standard

NL: 1.28E8

052120_Std_Nigericin#5740-5841
RT: 13.64-13.72 AV: 2 F: FTMS + p
ESI d Full ms2
747.4639@hcd30.00
[50.0000-780.0000]

Strain P009

NL: 1.98E8

011319 EtAcMS2 P009#7502-

7611 RT: 13.61-13.79 AV: 3 F:

FTMS + p ESI d Full ms2

747.4639@hcd30.00
[50.00000 700.00000]

[50.0000-780.0000]

